

THE ST HELENA INDEPENDENT

Est. 2005

VOLUME XV ISSUE 24, 22nd MAY 2020, PRICE £1

Is growing potatoes the answer?

Tammy Williams



Wet St Helena Day...



But Warm at Saint FM

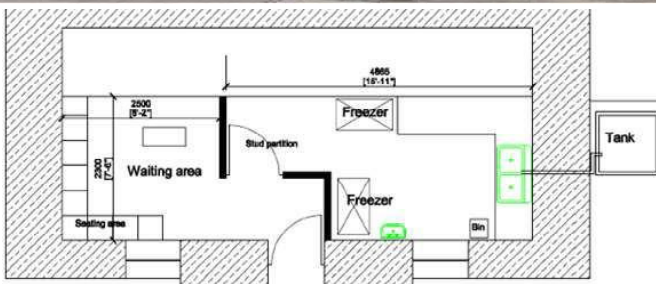


Fishmonger at the wharf



The Real East India Company would not do it like this

SHG authorise £5 coin worth £14.50 in silver for sale at £24.95



Zulu Memorial gets go-ahead



Is growing potatoes the answer?

Tammy Williams

'Gem' hails from Sussex, he is one of the sailors that arrived on his Yacht, 'Heaven's Door' nearly two months ago, a retired air line pilot, he described his marooning on St Helena as *"Stranded and lovin' it"*, the famous strapline found on T-shirts. In a radio chat this week I asked Gem what he thought St Helena should be doing now during this difficult time, his answer was not unlike current thinking but it does help to cement the argument that our future prosperity may just lie in the past, he raised the point that *"Hundreds of years ago before Suez opened up St Helena was on the main route between Europe and India and the other side of Africa, Australia, all other parts of the world and in that time you were getting hundreds of ships coming here for provisioning and you were able to provide the provisioning for those ships so there's plenty of opportunity on the island to be pretty much self-sufficient. I've been wandering around and seen lots of goats on the island, the island is short of milk, milk the goats, goat milk is delicious! There are vast areas of previously cultivated plots that could be brought back into production, it's hard work, it's a slog, nowadays we at least have modern machinery which will help but I think the island could develop quite an amazing self-sufficiency. You have an abundance of fish in the sea and I think there is plenty of opportunities for St Helena to produce certain things that aren't produced anywhere else in the world, you have some weird and strange vegetables and fruits that could be introduced into the rest of the world"*

The same question was put to around thirty members of the Chamber of Commerce on Tuesday night by Governor Rushbrook, who used the opportunity to inform us that commercial flights would be grounded to St Helena for the next five months. Sectors represented at the meeting ranged from farming, fishing, retail, telecommunications, construction and hospitality and a lively, sometimes intense conversation ensued around budget challenges, covid-19 preparedness, leadership, making better use of human and financial resources by focusing on key areas ensuring self-sufficiency and food security including health of the citizens a clear priority. Despite all sectors being affected by covid-19, hoteliers and guesthouse owners felt the thud of realism because as one hotelier said, *"While most businesses on St Helena will continue at a reasonable pace, there would be no replacement for empty beds"* The people who spoke on Tuesday night are at the top of their game, in other words, they 'knew' what they're talking about, farmers who were taught to farm the land as children have gained the right as agricultural experts, essentially, we don't need people *writing* about growing potatoes, we need people doing it.

I asked a few members who attended the meeting their thoughts, Tara Wortley and Darrin Henry responded, Tara, who operates a family retail business said *"St Helena is in the best position now to be able to plan how we respond to life beyond Covid-19. Most countries have had to react to drastic changes on a daily basis but we have the luxury of deciding when we open our borders and what measures we will put in place to protect the population. No one has a crystal ball but we can't make it up as we go along. Our Govern-*



ment needs to share their scenario planning so that we as businesses can make informed decisions about the future viability of our operations. As countries with a direct link to St Helena, such as South Africa, start to change their lockdown procedures, we need to be thinking ahead as to how those scenarios will affect our strategy whether that be on a 2 month, 6 month or 2 year scenario" Darrin Henry, the Creator of the St Helena App and who along with his wife also offer digital services, media, photography and some retail responded saying *"Personally I felt the meeting was very useful; a lot of issues were covered and everyone had an opportunity to speak their mind. Hearing insight on the challenges various sectors are dealing with in the current climate, was informative. The governor did a good job of opening the issues and triggering thought-provoking discussion. In terms of 'concerning' – the face masks debate highlighted how self-defeating the problem of government competing with the private sector is on St Helena. Also, improved sharing of information on Covid-19 crisis management is needed in order for businesses to make informed decisions in supporting future moves to reconnect some form of travel to/from the outside world"*

As perplexing as a situation may be the solution can always be found within communities themselves, a resolute determination to succeed beyond business models and business plans, for now, only what will work will work, we need to look towards people who will inspire and deliver results. We are going to see major changes across St Helena as the government battles to provide all essential services plus stay focused on development, without all the necessary resources we will struggle. Next week I will be talking to Councillor Lawson Henry, Chair of economic development, the financial secretary Dax Richards and the senior economist Nicole Shamier to establish where the government's new priorities lay.

Despite best efforts the world is learning and will continue to learn that it can never return to the way things were but for St Helena it's more of an oxymoron in that returning to a few basic truths may be our saving grace.

I am going to stick to my guns on this, there must be a nationwide movement with vibrant leadership from our politicians

Is growing potatoes the answer?

Tammy Williams

and administration at the top, the private sector needs to embrace diversification and novel ways of doing things, families have much to contribute while holding onto our unique way of life. Solution based thinking that protect our vulnerable community is the only way forward for now, in terms of budgets, health and education should remain untouched, they underpin the health and wealth of any society, healthier and educated communities fare better, politicians should realize the dangers of even contemplating squeezing these budgets. Currently we are sitting with a top heavy public sector and many organizations dependent on subsidy, now more than ever, the government needs to heed it's own advice of divesting services which should be carried out cost-effectively, we have all heard of divested services costing the government more. There is to me resistance and a reluctance to perform the surgery, no government wants to deal with job losses or closing shop on certain activities but I think Covid-19 may have changed that, in dealing with the job loss question the government could merge and integrate certain pursuits they are funding under one umbrella.

Renewed priorities means we can now get stuck into what matters most to our community and what we do well, food security is essential, discussions with farmers and fishermen should be at the top of the agenda, tourism related activities and international promotion is pushed gently aside as self-sufficiency becomes the new model for St Helena, as Prince Charles said *"We look to the past to create the fu-*

ture, it's not new, we don't have to hire a group of consultants to tell us this.

Businesses impacted directly by covid-19 will need accessible and tangible support, not just applications forms and a one size fits all criteria thrown at them, I would like to know how many businesses have received 'care' visits by politicians and Enterprise St Helena who's remit is to provide support to local businesses especially those in the tourism sector who have had entire incomes lost. My fortunate (or unfortunate) position means that my written observations are not just from a journalistic perspective but based on personal experiences and it maddens me to realize that the very people who have taken a risk and made a big investment into the island's tourism industry are likely to be usurped by a preservation of salaries rather than services. We should no longer be so arrogant as to believe that people will simply accept the existing state of affairs, we expect better.

The Governor asked the same question that Lord Ashcroft once asked; what do Saints want? For now health and security take precedence which mean losses elsewhere, including immediate loss of our novice tourism industry, we are all going to have to work harder, it will mean operating out of our comfort zones and re-inventing ourselves, it will mean focusing on less but achieving more. This is also a time to have backbone, show some grit, perform surgery and grow potatoes, both the government and private sector have a role to play, the question is, who will arise first?





Tel: [+290] 22327
Email: independent@helanta.co.sh
<http://www.saint.fm>

Editorial

For the second week in a row SHG have issued an exhortation asking that we do not stock up on food. While importing necessities has become particularly difficult in these Covid times, stocking up is part of the normal shopping habit in St Helena during good times and bad. This habit is unlikely to stop now. The usual situation is to have a chest freezer of a decent size and make sure it is always tightly packed, right to the top, immediately after the cargo from the ship arrives in the shops. There are good reasons for doing this; as the months go by these reasons will escalate from good to absolutely necessary.

It is a regular occurrence that at least one important item of essential food we like to see on the table is not in the shops. There are many reasons for this, from transshipments not arriving on time to droughts or floods in some part of the world affecting food production. And of course overseas suppliers are capable of messing up from time to time. Let's not forget the troubles that can arise from the ship's propeller getting temperamental. But we can also shoot ourselves in the foot as well.

The usual difficulties arising from a small population on a remote island means traders work on small volumes of goods, big costs and slim profits are a big part of it. In these circumstances suitable warehousing, continuity of supply, stock rotation and stock control become even more important than usual. I cannot think of one suitable warehouse and this severely effects quick and efficient distribution – adding to costs. Continuity of supply is regularly not there and there are also frequent signs that stock rotation is less than it could be. How much the quality of stock control has to do with lack of continuity of supply can only be guessed at but I'm sure every trader would like to have a new, improved and modern stock control computer system. No doubt the small volumes and slim profits make buying a new system a dream rather than a reality.

Something somewhere will need to change. Reliable supplies, otherwise known as robust supply chains, are part of national security and need to be more resilient. The present difficulties with supplies of any kind will get worse as the disruptive effects of coronavirus on food production worldwide gradually gets worse. In France, 1,500 tonnes of cheese was dumped in one week together with a mountain of potatoes. Everyone suffers because of this, including the farmers. The suffering among food producers is everywhere and will have an increasing effect on what we can put on the table as the months go by.

We can help ourselves and act to reduce the effects of increased unreliability in the supply-chain. Once more we will have no potatoes imported. This raises questions again about the phytosanitary standards required for their importation. We have to wonder why it is getting impossible to import potatoes. Are the phytosanitary standards unrealistically high, out of date, or both? It is difficult to believe South African growers continually produce disease ridden and uneatable potatoes.



The rest of the world (normally)



St Helena (usually)

Sharpen your elbows for when the food gets into the shops next week.

**Have a good weekend
Vince**

BRADLEY'S CAMP QUARANTINE SITE -NO VISITORS ALLOWED

It has come to the attention of Bradley's Camp Management that relatives of residents quarantined at the Camp have visited the Camp and walked around the outside of the fence in order to see their relatives.

This is deeply concerning and the public is reminded that Bradley's Camp is a Quarantine Facility and no visitors are allowed at any time to engage with the residents. People who do not abide by this could potentially put themselves and others in the Island community at risk of a possible infection of COVID-19.

Bradley's Camp is manned by 24-hour security and anyone found in breach of security requirements will be reported to the Police.

People wishing to leave gifts for any of the residents at the Camp can do so by dropping them off at the Security barrier between 10am and 11am and 5pm and 6pm daily. **No member of the public is allowed to venture any further into the Camp or its immediate vicinity.**

**SHG
21 May 2020**



**St Helena
Government**

UK Government Covid-19 support for healthcare, economy, security, transport and supplies

The UK Government state they are “firmly committed” to helping the Overseas Territories deal with the threats connected with Covid-19. Baroness Sugg, a junior minister at the Foreign and Commonwealth Office and Department for International Development has special responsibility for the Overseas Territories. She responded to a question from Lord Jones of Cheltenham saying:-

“The Government is firmly committed to supporting the Overseas Territories in dealing with the various impacts of COVID-19. I am in regular contact with the political leaders and Governors of the Territories, to understand the situation on the ground, discuss their needs and identify how we can best support them. I am overseeing a cross-Whitehall Unit, led by officials from the Foreign and Commonwealth Office and Department for International Development, to support the Terri-

tories on four key areas - healthcare, economy, security, and access (for transport and supplies). We have provided essential medical equipment, medical advice and facilitated the recruitment of healthcare professionals where needed. We have boosted testing capabilities in all the inhabited Territories, except Tristan da Cunha and Pitcairn where there are no cases of COVID-19. The testing capabilities will not only benefit the response to COVID-19 but will also support the testing of other diseases. We are also providing financial support to mitigate the economic impacts in the most vulnerable Territories.”

Lord Jones’ question asked, what assistance has been given to the Overseas Territories to help cope with the COVID-19 pandemic, and (2) which Overseas Territories have introduced testing for COVID-19?

All arriving passengers on Tuesday’s flight to be tested

All passengers on Tuesday’s flight will spend 14 days at Bradley’s Camp as part of the usual safety precautions against the threat of coronavirus. A new development is that all passengers will be tested for Covid-19 at the end of the 14 day isolation period and before they leave Bradley’s Camp.

Previous information from SHG had been that those display-

ing Covid-19 symptoms will be tested. However, now that further supplies of testing equipment have been confirmed SHG is able to widen the testing regime to everyone arriving at St Helena airport. This comprehensive testing closes the loophole where anyone arriving who is infected by Covid-19 but not showing the symptoms would be allowed among the Island community undetected.



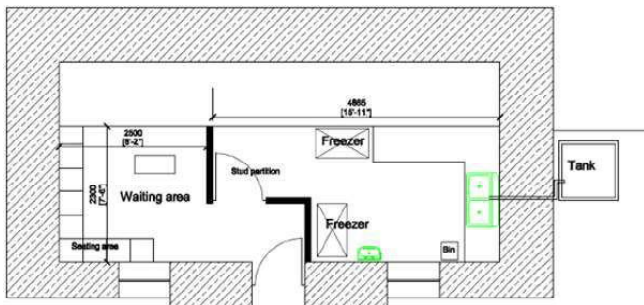
Photos By Nick Stevens

Fishmonger at the wharf

Development permission is likely to be given for the Old Custom House to be used as a fish processing and sales outlet. The building is vacant and in poor condition. The Planning Officer's report to this month's Development Authority meeting stated that bringing the building back into use will encourage the much needed repair and maintenance. No changes to the exterior appearance of the building are to be made and the development application complied with Built Heritage and other relevant planning policies.

The Land Control Development Authority recently recommended that Development Permission is given. This recommendation will now go to Exco for final approval. Exco have to be involved in the decision because the Old Custom House is within 50 metres of the sea.

The report to LDCA members pointed out, "This activity will involve preparation of fish, as well as being a sales establishment. The applicant will provide customers with quality fresh seafood, consisting primarily of offering ground/reef fish varieties and crustaceans. The business will supply both individuals and restaurants." The report also stated, "Currently there is not a consumer service offered on Island, and will not be in direct competition with any other business estab-

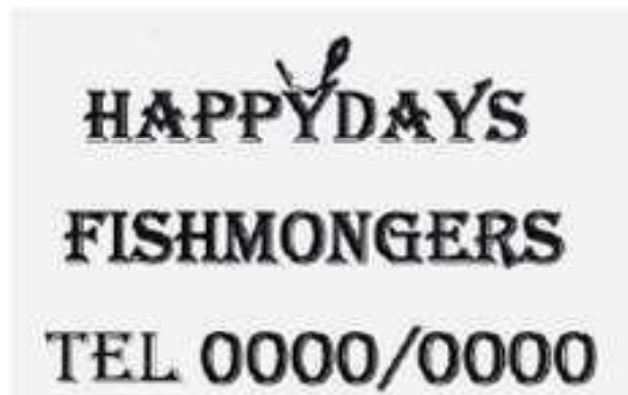


The interior layout proposed for the fishmonger at the Old Custom House. The waiting area for customers is on the left and is separated from the work area by stud partitions and a door giving access between the two areas.



lished to date.”

The interior will be changed but will not involve structural alterations to the building. The report states, "Works to be undertaken to the building will consist of forming two rooms, a waiting area and prep area. This will involve the construction of two stud walls and a single door. The hand basin for washing and fish waste will be connected into a one cubic metre water tank, which will be situated on the outside of the building. In order to connect the line into the tank, a small hole will be created through the existing wall. The intention is to empty the tank on a daily basis, where it will be recycled as garden water. Unfortunately due to issues with the drainage, the applicant cannot connect into the existing line."



The fishmongers sign will use the existing signboard to advertise the business

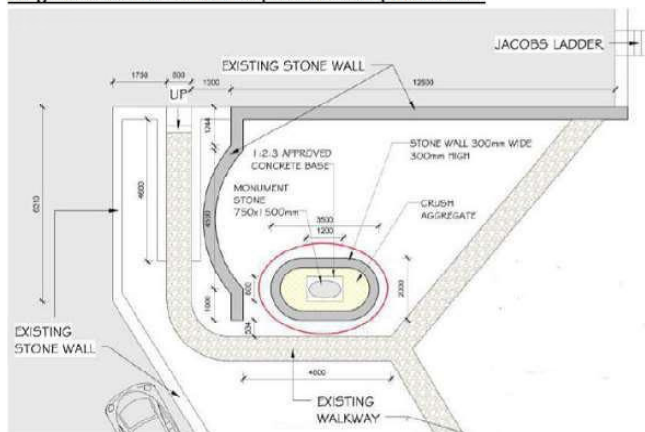
Zulu Memorial gets go-ahead

Plans for a Zulu Memorial which have been a long time in preparation finally got the go-head when the application for development permission was discussed this month by the Land Development Control Authority. The site for the memorial has long been envisaged at the top of Ladder Hill within the viewing platform area. Ladder Hill Barracks has a strong link with Zulu history as seven Chiefs were condemned to hard labour and eventually died after being exiled here in the early 20th century. Some years ago a group of Zulu representatives came to St Helena to pay respect to the memory of their ill-treated Chiefs.

Their crime was to rebel against taxation imposed during British rule of what is now KwaZulu-Natal. Known as the Bambatha Rebellion after the rebellion's leader, Bhambatha kaMancinza, the rebellion was crushed and its leader is thought to have fled to Mozambique but he is looked upon by some today as the inspiration for black rebellion against

white dominance in South Africa. Bhambatha kaMancinza claimed his orders to rebel came from Dinizulu but this was denied.

Diagram 2: Details of the Proposed Development Area



Zulu Memorial gets go-ahead

Diagram 3: Concept Design of the Monumental



No objections were received when the development application for the Zulu memorial was advertised, however the Heritage Society commented the provisional design was too big and looked incongruous. The proposed stone monument is shown as 1.5 metres high and 0.75 metres wide. It depicts the Zulu shield and crossed spears together with a memorial plaque.

The real East India Company would not do it like this SHG authorise £5 coin worth £14.50 in silver for sale at £24.95



The international coin collecting media is announcing the issue of another St Helena commemorative coin. Last Friday SHG issued an NHS Heroes silver coin with a face value of £5. *Coin Update* reported, "The government and treasury of St. Helena have released (15th May) silver crown coins that pay tribute to Britain's National Health Service, which has been in the spotlight recently due to the worldwide pandemic of COVID-19. Founded in 1945, the National Health Service (NHS) has become a treasured entity which has had a very prominent place in the lives of Britons now for nearly 75 years". They continued their report with, "Issued by the government and treasury of St. Helena, and in conjunction with the East India Company, the coins are being offered in support of the NHS staff and volunteers at the front line of Britain's fight against COVID-19. 100% of all profits from the sale of these coins will be donated to *NHS Charities Together COVID-19 Urgent Appeal* to support and show appreciation to the incredible NHS staff and volunteers working tirelessly to combat the genuine threat all of the United Kingdom currently faces. The reverse side includes a poignant design depicting a portion of the British "Union Jack" flag in the shape of a heart together with the message **#nhsheroes** super-imposed over the heart. An additional inscription placed below and on the right side of the heart reads **LOVE – CARE – COMPASSION - STRENGTH.**"

The original East India Company was dissolved in 1874 after having a tough time in India for several years. The Indian Rebellion of 1857 was a sign of military, administrative and political shortcomings as the East India Company itself tried to develop as fast as its expanding geographical, economic and military influence. The East India Company that SHG has teamed up with was bought by a Mumbai entrepreneur who relaunched the company in 2010 and used to famous

name to sell luxury goods.

One ounce (1 oz) of silver currently has a market price of £14.50 which means the regular retail price of this new commemorative coin is about £10.00 more than the basic cost of the pure silver. After allowing for the cost of design, manufacture and marketing it is likely that about £5 remains. For the new East India Company that £5 or so remaining is normally their profit and when teaming up with SHG to use the St Helena name on their coins, SHG would usually receive a royalty on sales but the income gained by SHG in this way is never publicised. The SHG press release states "100% profit" on this new commemorative coin is donated to the *NHS Charities Together Coronavirus* appeal. However it is not clear whether SHG has deducted their royalty or whether the new EIC has deducted a certain percentage before the 100% profit is calculated.

The original East India Company issued its own currency, circulating gold, silver, copper and tin coins. Last December a 1729 five guinea gold coin was put up at auction and sold at the London Coin Auctions for £20,000. At the same auction a set of three commemorative gold coins issued a few years ago by the new East India Company had a reserve price of £900. The only East India Company coins struck specifically for St Helena are the 1714 coinage of two coppers and a silver piece and the halfpenny of 1821. East India Company coins and a lead bale seal with the true balemark can be seen in the museum.



The original East India Company "balemark"



The East India Company (2010) logo

RSPB Gough Island team finally get back home

Three weeks ago the RSPB team which went to Gough Island, part of the Tristan group, in February to start a project aimed at eradicating the island's giant mice finally arrived at Ascension to join an RAF flight back to the UK. The mice eradication project had to be halted in March because of the coronavirus pandemic. Unable to return to South Africa, the project team sailed for 12 days to Ascension aboard a passenger yacht. This week it was reported they had at last arrived back in the UK.

The giant mice are a severe threat to the survival of the Tristan Albatross; eating live chicks in the nests and even attacking adults. It is hoped the project can be continued next year but additional funding will need to be found first.

Giant mice attack the nest of an albatross to feed on the live chicks

The RSPB explain the Gough Island project; - Part of the UK Overseas Territory of Tristan da Cunha, Gough Island is home to more than eight million breeding birds from at least 24 different species, including highly threatened species such as the Atlantic yellow-nosed albatross, Atlantic petrel, MacGillivray's prion, Gough bunting and Tristan albatross. The Critically Endangered Tristan albatross, one of the world's greatest wanderers, is in need of an eleventh-hour intervention.

Mice were accidentally introduced by sailors to the remote Gough Island during the 19th century. These rodents have



now colonised this World Heritage Site and learnt to exploit all available food sources on the island – including seabirds. Video cameras reveal how the mice eat the flesh of live seabird chicks – and, more recently, live adult birds too. Tristan albatross chicks weigh up to 10kg (around 300 times the size of the mice), but the open wounds inflicted frequently lead to their deaths.

The situation is so severe that just 21% of Tristan albatross chicks survived to fledge during the 2017/18 breeding season. Such low breeding success is rapidly pushing the Tristan albatross towards extinction. The new evidence of attacks on adults is a dreadful development – the loss of adults will accelerate the path to extinction for this amazing bird.

The St Helena Association launches an online fundraiser after Sports Day is cancelled

James Miller, The St Helena Association UK

The St Helena Association UK have announced that they are launching an online fundraising campaign in response to St Helena Sports Day being cancelled for the first time in its 40-year history.

Due to the ongoing COVID-19 pandemic, The Association unfortunately had no other option but to cancel this year's event which naturally came as a blow to the many thousands of individuals who attend every year.

With last year's 40th anniversary event raising £4000, The St Helena Association decided to launch an online fundraiser to enable the charity to continue supporting organisations on the island that have a positive impact on the island community.

The campaign will be running from May 21st up until August 30th (the intended date of this year's Sports Day event) with an initial target of £5000.

All money generated from this campaign will be donated to a series of charities directly on the island. Previous donations have been sent to 'Cancer Support & Awareness', 'SHAPE', 'Ageways', 'Arts and Crafts' and 'The St Helena Disabled

Persons Society' to name but a few.

"Every year we send between £4000 and £6000 to help good causes and charities on St. Helena. This is money raised between Sports Day and our Dances" says Trevor Toms, Treasurer of The St Helena Association UK. "It has been suggested to us that many people will be happy to donate some or all of the money they would have spent on Sports Day, to help us generate the funds we need. So, please help us by donating to our fundraiser. Every donation will help."

"As all of our activities have unfortunately been cancelled due to COVID-19, those in need on the island who rely on our fundraising efforts could suffer greatly from this" says Candy Moyce, President of The St Helena Association UK "I appeal to you all to make a donation. No matter how big or small, it will definitely make a huge difference."

Even before it's official launch, the campaign has already received donations from generous individuals who share The St Helena Association's mission of supporting those in need on the island.



**St Helena
Government**



THINK BEFORE STOCKING UP

The MV Helena is on schedule to arrive tomorrow, Thursday 21 May, and offloading will commence on Friday, 22 May. The MV Helena will depart St Helena for Cape Town on Monday, 25 May, and will return to the Island on 15 June 2020.

Arrival dates for the MV Helena from South Africa to the end of this year are as follows:

- 15 June
- 17 July
- 11 August
- 8 September
- 10 November
- 7 December



Importers have confirmed that with the exception of potatoes, all of their food orders have been fulfilled and we should see food supplies replenished and on the shelves in shops within the next week.

There will be adequate food supplies to cater to the Island needs, including those items which are currently in short supply such as milk, margarine, butter and rice.

We want to ensure that as a community everyone has a chance to buy what they need and no one is left without an item that is used daily, whilst other households have stockpiled items for future use.

We take this opportunity to remind you of the need to shop normally and to consider other people who might be impacted if you decide to purchase more than you need.

'We are all members of a larger community which depends on everyone playing their part.' (John Molson)

**SHG
20 May 2020**



Has an exciting opportunity for a
**Full Time Technical Trainer -
Gardening**

Purpose of Role:

- To inspire, enthuse and train disabled and vulnerable adults in gardening techniques, providing meaningful work experience through direction and high supervision.
- To support the conservation, maintenance, development and enjoyment of the SHAPE Garden areas as a significant horticultural attraction, providing garden therapy as well as production of organic fresh produce for sale to the public with a view towards achieving a steady flow of income.

Responsible to SHAPE Manager
Hours of work – Monday to Friday
(8:00am – 4:00pm)



For a full job description and requirements of the role please contact:

Mr. Marianne Young-Crowie
(SHAPE Manager) on 24690 or
email SHAPE@sthelena.gov.sh

Please submit your application
form to:

Miss Danielle Anthony
(Finance & Administration
Manager) via email
Finance_AdminManager.SHAPE@sthelena.gov.sh
no later than 4pm on Friday 29th
May 2020

We look forward to hearing from
you!

Invitation to Tender

The Saint Helena Government wishes to invite suitably experienced contractors to submit tenders for the following contract-

**Annual Grounds Maintenance of the Castle Gardens,
Grand Parade and Honeymoon Chair, Jamestown**

Copies of the tender document can be obtained from

**Miss Tiffany Lawrence
Procurement Officer
Essex House
Jamestown**



St Helena
Government

**Telephone No: 22270 or email
tiffany.lawrence@sainthelena.gov.sh**

A site visit to view the works will take place on Friday, 22 May 2020, at 9:30am, meeting at the Castle Gardens, Jamestown.

If you are unable to attend the site visit during this time, please contact the Procurement Officer to arrange another date & time.

Should you require any further details, please contact the Maintenance Officer, Mr Dalton George, on telephone number 24724 or email dalton.george@sainthelena.gov.sh. Completed tenders should be placed in the Tender Box at Essex House by 12noon on Friday, 05 June 2020.

Interested parties should note that this opportunity is **not** being advertised overseas.



St Helena
Government

VACANCY – ELECTRICIAN

The Infrastructure and Transport Directorate has a vacancy for an Electrician who will be responsible for carrying out daily maintenance on electrical installations and associated equipment and assisting with testing and inspections of electrical installation within SHG buildings in accordance with the BS7671 17th Edition IEE Electrical Regulations.

The candidate should have qualifications in Functional Skills Level 1 in Literacy and Numeracy, City and Guilds in Electrical Installations or St Helena Wireman's License and a Valid Driver's License at Class C. At least two years' experience working as a qualified electrician is also required.

The salary for the Electrician is at Grade C1 commencing at £8,613 per annum.

For further details regarding this post, interested persons should contact Mr Anders Bowers, Electrical Engineer on telephone number 22054 (e-mail anders.bowers@sainthelena.gov.sh)

Application forms and Job profiles for both posts are available from Essex House and should be submitted to the Human Resources Manager, ENRD, Essex House or e-mail karen.thomas@sainthelena.gov.sh by no later than Wednesday 3rd June 2020.

All appointments are subject to the successful candidate providing satisfactory clearances, including a medical check and vetting/DBS clearance. SHG reserves the right to have information provided on the application form independently verified.

SHG positively accepts applications from all members of the community regardless of race, gender, disability, age, sexual orientation, religion or belief, and will consider all applications on the basis of merit, in accordance with the person specification. All disabled applicants meeting the minimum criteria listed in the job profile will be guaranteed an interview.



Properties to Let

Solomon & Company (St Helena) PLC
has the following Properties available to let
on a commercial lease arrangement as Accommodation

Prospect House

Available Now

Eastbridge

Available Soon

Springdale

Available Now



Situated in Alarm Forest, the property consists of
the following fully furnished rooms:
Four Bedrooms (Inc. ensuite Master and Studio Flat),
Bathroom & Toilet, separate downstairs Toilet,
Kitchen with Pantry, Dining Room, Office/Craft Room,
Lounge/Library with Large Bay Window and Utility Room

There is also a double Garage and the property is
surrounded by beautiful Lawns/Grounds
(grounds maintenance inclusive)

Situated in Jamestown, the property consists of
the following fully furnished rooms:
Two Bedrooms, Bathroom & Toilet, Kitchen/Dining Room,
Lounge and ground floor Disabled Toilet and Utility Room

There is also an open Balcony
overlooking Napoleon Street

Situated in Guinea Grass, the property consists of
the following fully furnished rooms:
Two Bedrooms, Bathroom & Toilet, Kitchen and
Open-plan Dining Room and Lounge

There is also a store room and a sizable Front Lawn
(grounds maintenance inclusive)

Ian Gough

General Manager (Services & Properties)

Telephone: 22380

Email: GM-Services.Properties@solomons.co.sh

For Further Information Contact

Merena's Gift Shop



Phone : 22792

Boat Fishing Rod 1 piece £142.50
Boat Fishing Rod 2 piece £129.50
Fishing Rod & Reel Shimano £129.00
Fishing Rod and Reel £35.05
Fishing Rod & Reel £45.15

Reels for Boat Rod £115.90

Reel Shimano £48.05

Reel £35.90

Pack of 5 glow
lights £1.40

Fishing Lures
£ 17.50

Sabiki Squids
£4.50

Droppers
£2.50

Asstd Sinker

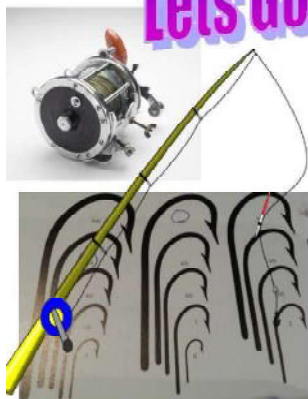
Balls 3oz, 2oz

1oz, 1/2oz

1/4oz

Packs of 10

Lets Go Fishing



Fishing plastic 100m
7.3kg £1.70, 9.9kg £1.80,
12kg £2.25, 17kg £2.50,
Extreme Plastic 600m
30lb, 40lb, 60lb
Hanks of plastic 100m
45kg, 52kg, 60kg

**A new range of
fishing hooks**



AUDIT ST HELENA
External Auditors

VACANCY FOR AUDITOR

Salary range £10,550 to £13,793 per annum

Fixed Term Contract (9 months June 2020 – February 2021)

Audit St Helena is seeking to recruit an auditor to join their audit team.

The auditor will undertake financial audits under supervision across the public sector.

Prospective candidates are required to have GCSE grade C or above in English and Mathematics with further studies in a quantitative discipline (Economics/ Business Management/ Accounting/ Finance or similar) to diploma level 2 or academic equivalent.

Key skills for this position include good oral and written communication, an aptitude for figures and an analytical and enquiring mind. IT skills in Excel, Word and Outlook are also essential.

The job profile and application forms are available by calling 22111 or e-mailing paul.gasteen@sainthelena.gov.sh. Applications should be submitted by hand or by e-mail to the Audit St Helena, First Floor, New Porteous House, Jamestown no later than 4pm on Friday 5th June, 2020.



UTILITY BILLS

Why not sign up to receive your utility bills by email. Just send us an email on enquiries@connect.co.sh with your name, address, customer reference and the email address you would like to have your utility bill sent to.

You do not need to print the bill to take to the Bank for payment, but can complete a Bank of St Helena Transfer form with the details from your emailed bill and you can use the "Drop-in" box at the Bank of St Helena premises.

For further information, contact Alison Wade on telephone number 22255 or the email address above.

18 May 2020



TIP OF THE WEEK

**Clean your light fittings
and lampshades. This
may give you more light
so you can use fewer
fittings.**

**Use lower wattage of
light bulbs where possible
or low energy bulbs.**

During 'Smile Month' the Dental Department would like to remind the public of the importance of a healthy mouth.

WEEK 1 offers advice to parents of the importance of a baby's first teeth.



PROTECTING BABIES & TODDLERS FROM TOOTH DECAY

Why the first teeth are important?

The first teeth usually start to erupt at around six months and are all through by three years. This can sometimes cause mild discomfort and fever.

The first teeth are important for a child's speech, eating and facial appearance. They establish a space in the mouth for adult teeth, allowing the permanent teeth to grow and develop normally. Early loss of the first teeth can lead to overcrowding when adult teeth appear.

What is dental caries?

Dental caries (tooth decay) is the softening of the tooth enamel which leads to cavities (holes) in the teeth. Tooth decay causes distress and discomfort to toddlers, stop them sleeping and eating, and leads to reduced food intake and behavioural disturbances.

Dental Check ups and treatment

Treatment of dental decay in toddlers is difficult because of their limited understanding and ability to cooperate with treatment. It is far easier to prevent decay than to treat it. You should bring your baby along to your own dental appointments so they can get used to the environment, and toddlers/children should all see the dentist every six months, either at the clinic or when the dentist visits school if they are old enough to attend.



GUIDANCE & TIPS FOR PARENTS

Start tooth brushing as soon as your child's first teeth start to emerge using a baby brush or cloth wrapped finger to clean them and ensure you brush their teeth **twice** each day.



Toddlers should not be allowed to run around with a toothbrush in the mouth because of the risk of injury if they fall. Children should be supervised and need help with brushing until at around seven years of age.

An easy way to brush your child's teeth is from behind. A comfortable and safe position for your toddler can be on your knee, in a high chair or in a buggy.



Use a fluoride toothpaste to strengthen tooth enamel. Up to the age of three use a smear of toothpaste containing 1000ppm of fluoride. Over the age of three use a pea sized amount of toothpaste containing 1350-1500 ppm of fluoride.



Smear



Pea-size



Regular

Try not give sweet drinks in a bottle because sucking slowly on sweet drinks increases the risk of tooth decay as the teeth are in contact with the sugar over a longer period of time.



Avoid sugary foods and drinks at bedtime and at night. Saliva helps protect against tooth decay. During sleep salivary flow and swallowing decline, making clearance of material in the mouth less frequent.

If your child uses a pacifier, soother or dummy make sure not to dip it in anything e.g. jam or honey as you may cause your baby to develop tooth decay.



You can protect your toddler's teeth and prevent tooth decay by regular dental visits, brushing with a fluoride toothpaste, and sensible eating and drinking habits.

For further information contact the Dental Clinic, tel. 22500
Dental Clinic, General Hospital, Jamestown, St Helena, STHL 122



St Helena
Government

NEW ST HELENA MAP

The following is a public announcement from the Infrastructure & Transport Directorate:

The new St Helena map, to replace the Ordnance Survey map previously produced in 1990, will be displayed in the window of the St Helena Tourist Office, at the Canister, Jamestown, from Monday, 18 May 2020.

Watermarked (low resolution) versions of the map can also be found on the SHG website via: <https://www.sainthelena.gov.sh/government/public-information/>.

It is anticipated that high resolution printed versions, available for purchase, will arrive on-Island within the next three to four months.



St Helena
Government

INVITATION TO TENDER MANAGEMENT & LEASE OF THE MULE YARD

St Helena Government is seeking Invitations to Tender for the Management & Lease of the Mule Yard.

Full documentation and the specifications can be found on the St Helena Government e-procurement system which can be accessed via: <https://in-tendhost.co.uk/sainthelena> following registration on the system.

User guides are available via the 'Supplier Information' tab to assist prospective suppliers registering on the e-Procurement system.

Any questions in the interim should be addressed to the Procurement Office for the attention of Nicola Young, Procurement Officer.

E-mail: nicola.young@sainthelena.gov.sh

The deadline for submissions is 12.00 GMT on Friday, 12 June 2020.



St Helena
Government

INVITATION TO TENDER MANAGEMENT OF JAMESTOWN SWIM- MING POOL

St Helena Government is seeking Invitations to Tender for the Management of the Jamestown Swimming Pool.

Full documentation and the specifications can be found on the St Helena Government e-procurement system which can be accessed via: <https://in-tendhost.co.uk/sainthelena> following registration on the system.

User guides are available via the 'Supplier Information' tab to assist prospective suppliers registering on the e-Procurement system.

Any questions in the interim should be addressed to the Procurement Office for the attention of Nicola Young, Procurement Officer.

E-mail: nicola.young@sainthelena.gov.sh

The deadline for submissions is 12.00 GMT on Friday, 12 June 2020.



St Helena
Government

Invitation to Tender

The Saint Helena Government wishes to invite suitably experienced contractors to submit tenders for the following contract-

Bottom Woods Site Excavation (Phase 1)

Copies of the tender document can be obtained from

Miss Tiffany Lawrence

Procurement Officer

Essex House

Jamestown

Telephone No: 22270 or email tiffany.lawrence@sainthelena.gov.sh

A site visit to view the works will take place on Monday, 25 May 2020, at 10am, meeting Bottom Woods.

If you are unable to attend the site visit during this time, please contact the Procurement Officer to arrange another date & time.

Should you require any further details, please contact the Civil Engineer, Mr Christopher Peters, on telephone number 22270 or email christopher.peters@sainthelena.gov.sh.

Completed tenders should be placed in the Tender Box at Essex House by 12noon on Wednesday, 03 June 2020.

Interested parties should note that this opportunity is **not** being advertised overseas.

Unsticking the sticktights

If there was ever a flea that was misleadingly named, it is the turkey flea, especially when I could count the number of turkeys left on the island with one hand. The better name for this pest used internationally is the sticktight flea, because – well, as it says on the label, it sticks tight. Very tight. In fact, rather grossly, it burrows into the skin. The flea's proper name, for the science geeks, is *Echidnophaga gallinacea*, and you won't find it in the UK – it's a flea of the tropics and subtropics found all around the world. At the moment with the rains and warm sunny days, sticktight fleas are booming, along with the other fleas, parasitic worms, ticks, flies, lice and the rest of this troublesome pantheon of prolific pests.

It's actually quite an intriguing flea. Poultry keepers will know that it's a major problem in the poultry houses where it attaches to the bare areas such as the wattles and combs, sometimes in such numbers and so closely that the chicken's face looks glossy black. The chickens can become profoundly anaemic, noticeable by the comb becoming pale, and not just go off lay but even die from heart failure. But did you know that it isn't just a poultry flea? At the vet clinic we quite often see cats with damaged ears because they have been raking at the sticktight fleas, and one dog we successfully treated had been tearing at his ears so much that he had all but ripped them apart. I've even had the privilege myself, after spraying a poultry house, of taking a shower in the morning and discovering that I had some uninvited guests dining at my expense in the thinner skin of my private area. Enough to put you off your cornflakes!

Most pet owners will know that normally if they see a flea on their cat or dog, it is making a quick dash for cover, so you could be forgiven for thinking that sticktight fleas are more like ticks. Ticks though are related to spiders, and so have 8 legs, whereas fleas are insects and so are 6 legged. But there is a similarity in behaviour.

What you are seeing are just the females, seeking a blood feed so that they can lay their eggs. It's much the same story with ticks, mosquitos, sandflies and the like – laying eggs is heavy on resources so the females need to feast on nutritious blood. Once the female sticktights have filled their bellies they then burrow into the skin and anchor themselves with their mouthparts, often staying there for up to 6 weeks.

The male sticktights, lazy as ever, simply mate with the females and wander off. The female lays her eggs day by day in her burrow where she's attached, triggering an intense irritation. Some eggs drop into the poultry house bedding, but



many stay under the skin where they hatch and provoke ulceration. All the hatched larvae end up on the poultry house floor and feed off chicken manure and other organic debris until they pupate and develop into adult fleas. And so the cycle has not only been completed, but the population has exploded.

What to do about it? This means there are two sides to the problem. The litter is full of eggs, larvae, pupae and the lazy male sticktights who have nothing much better to do than eat and mate (I don't think they drink beer or watch footie!). And the chickens carry the females who are laying the eggs. So there is a two-pronged attack needed to break the cycle. Clean and scrape out the litter, then burn it, don't just heap it up. Now spray the floor, paying attention to the nooks and crannies around the edges. We at the vet section of ANRD can provide you with a very effective insecticidal spray and you can use a small rose sprayer or a backpack sprayer. Next, lay down some fresh clean bedding.

The chickens themselves present a different problem. Lots of insecticides could be used, but with most you have to throw the eggs away for an indefinite period. A very effective cheap and safe method is to use good old simple Vaseline. Like everything the fleas have to breathe, and they do so through tiny holes called spiracles in their hard skin or cuticle. Vaseline won't irritate or effect the chicken's eyes, won't put harmful toxins into your eggs, but it will suffocate the fleas. They'll hang there for a while, dry and scabby, but should eventually fall off.

Wild birds and even rodents can easily re-introduce the sticktight fleas into your chicken house as the island is rife with them, so keep an eye on those wattles and combs and repeat the process when necessary before the numbers build up. Unstick those sticktights and keep those chickens laying!

Dr Joe Hollins MA VetMB MRCVS

SHCA T20 KNOCKOUT 2020

Sat 16 May 20

Heat 95

Scott Crowie 18
Dax Richards 18

Allstarz 98/0

Ross Henry 61*
Gareth Johnson 26*
Gareth Johnson 5/6
Brendon Leo 2/18

Antonio Green 32
Mark Williams 4/20
Gavin Ellick 3/16

Dan Watton 13
Dan Marlow 3/13
Leon Legg 3/30

Mark Williams 3, Shane Williams 2, Gavin Ellick 1

Gareth Johnson 3, Ross Henry 2, Brendon Leo 1

Sun 17 May 20

Challengers 155/6

Jordi Henry 55*
Alex Langham 35
Jordi Henry 2/10
Jordan Yon 18

Woodpeckers 58

Trystan Thomas 13
Perry Leo 12
Ralph Knipe 2/24
Jamie Ellick 1/9

Jordi Henry 3, Alex Langham 2, Trystan Thomas 1

Mustangs 151/8

Shane Williams 34

Lions 80

Leon Legg 14*

Fixtures

Sat 23 May 2020

1.30pm

Lions v Woodpeckers

Umpires: Mustangs

Sun 24 May 2020

9.30am

Pirates V Allstarz

Umpires: Heat

1.30pm

Challengers V Mustangs


Umpires: Woodpeckers

Golf Report for Sunday 17th May 2020

It was a beautiful Sunday afternoon. The scattered clouds allowed the sun to peep through from time to time and smile on the golfers. The Par 3 Strokeplay competition attracted 18 players. 3/8 of the handicap was applied. For most this was a game of irons. Unfortunately, for some golfers like KJ who like to hit their driver and fairway woods it isn't a preferable format. For some of our more senior golfers who took part in the competition they occasionally opted to use a driver to get the required yardage. With shortened fairways it's also

quite an energy saving format and expedites the pace of play. By 4pm the competition was over. The scores were in. Top on the leaderboard and winner of first prize with nett 63 was our newly elected Games manager Mr. Jeffrey Stevens followed in second place by Mr. Peter Johnson with nett 64.

Being a par 3 competition, the probability of players getting a two increased significantly. There was a total of 6 twos. The two-ball pool winners were as follows;

	Lawson Henry	8 th Hole
	Jeffrey Stevens	9 th and 14 th Hole
	Bramwell Lumukwana	9 th Hole
	Gerald George	14 th Hole
	Douglas Augustus	12 th Hole



Congratulations to all the winners.

Sunday 24th May 2020 the club will be hosting another annual big one - The Gwyneth Howell Trophy Competition. This will be a Cross Country (the course played in reverse) Strokeplay competition. Full handicap will apply. Plenty of prizes to be won including a surprise halfway treat for the daring. Tee off 12:00. Registration is ongoing through the usual channels.

We regret an error of omission in our last week's report. Mr. Nicky Stevens was reelected unopposed as the Course manager.

We wish you all a great weekend...!

SHGC



Armchair Supporters View by Nick Stevens

Last weekend the Bundesliga League return in Germany with matches played behind closed doors.

It became the first major European league to return since football was suspended because of the coronavirus pandemic, with six fixtures on Saturday and a further two matches on Sunday.

All games were played under heavy precautions laid out by the German Football League. A strict hygiene and safety protocol, including the banning of crowds, was necessary to get the go-ahead from political authorities.

Bayern Munich defeated Berlin 2-0 away from home and Dortmund beat Schalke 4-0. Bayern lead Dortmund by 4 points with 8 matches each to play.



Hertha Berlin players broke social distancing rules when they celebrated their goals in the win over Hoffenheim.

Bundesliga players will be reminded of the return-to-play guidelines before next weekend's matches after Hertha Berlin's players ignored them during Saturday's 3-0 win at Hoffenheim.

The DFL [German football league] has already said Hertha will not be punished for their celebrations.

However, Bundesliga International chief executive Robert Klein says the guidelines need to be followed.

Celtic has been confirmed as Scottish champions for the ninth season in a row and Hearts have been relegated after the SPFL ended the season. The decision was taken at a board meeting on Monday after the 12 clubs agreed at the end of last week that completing the campaign was unfeasible. Average points per game played have been used to determine final placing.

The only change to the table from when football was halted on 13 March is that St Johnstone goes sixth, above Hibernian.



Celtic League Champions for the 9 year in a row.

The hope of Premier League football returning is looking positive although it might start a little later than the 12th June. The only worry for us the fans that players and staff are testing positive for Covid-19 and I fear if they get more than a few cases the league may get cancelled.

One player and two staff at Watford and Burnley assistant manager Ian Woan are among six positive Premier League tests for coronavirus. The other two are at a third club, the details of which have not been revealed.

Players and staff who have tested positive will now self-isolate for seven days.

It comes as squads started non-contact training on Tuesday, as the Premier League steps up plans for a restart. A total of 748 players and staff from 19 clubs were tested. Norwich City did their tests on Tuesday.

Watford confirmed a player and two members of staff had tested positive but they would not be naming those involved as they had asked for medical confidentiality.

Watford Captain Troy Deeney has refused to attend training due to fears of his families health.

"We're due back in this week. I've said I'm not going in," Deeney, 31, told Eddie Hearn and Tony Bellew on the Talk the Talk YouTube show.

"It only takes one person to get infected within the group and I don't want to be bringing that home.

"My son is only five months old. He had breathing difficulties, so I don't want to come home to put him in more danger.



Troy Deeney has refuse to attend training

What's happening at New Horizons?

It is with great sadness that New Horizons is unable to bring you the St Helena Day celebrations this year.

We would like to thank the St Helena Community for all your support over the last 13 years and like to take this opportunity to say 'Happy St Helena's' Day to all St Helenians and Friends of St Helena, here and around the world.

Continued on NEXT PAGE

Armchair Supporters View by Nick Stevens



Past St Helena Day Celebrations

Your Opinion Counts



THE CONSTITUENT

Preventing Covid-19 reaching St Helena is of paramount importance. We must all, therefore, be vigilant in protecting the island's population from this deadly disease.

The impact of the virus on tourism and movement of Saints to and from the island is having a debilitating effect on local businesses, in particular, and on the economy in general. It is premature to even contemplate what rejuvenation will look like for St Helena from tourists related perspectives; however, work is progressing with other significant projects aligned to the island's ongoing development.

On 8th May 2020, John Cox, Infrastructure Management Consultant, provided a progress presentation to elected members on the Infrastructure and Strategic Plan. The encouraging presentation included additional options for addressing the lack of sewerage capacity which has stopped construction development in the HTH district, and options to address the shortage of domestic water during drought periods. Raw water storage capacity remains a serious hindrance to the development of St Helena, and it is reassuring to now see that the problem will be addressed.

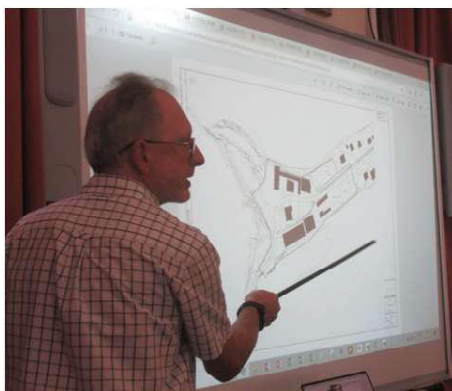
A presentation relating to raw water storage, which was delivered at some of the recent district constituency meetings, will soon be broadcast via the Sure TV platform.

On 15th May, Engineer, Richard Wotton (pictured), provided elected members

with a progress report on the pragmatic planning approach for the major infrastructure development of Ruperts. The initial work is being spearheaded by Richard, Architect, Kelly Whitton and Capital Programme Manager, Alfreda Yon. The submarine cable project and the renewable energy project are both now approaching tangible reality; indeed, these are two major game changing developments for St Helena.

At the last Environmental & Natural Resources Committee meeting, Julian Benjamin and Gina Henry (Infrastructure & Transport Directorate) provided their monthly update on the Bottom Woods development and a progress report on the initial stages of constructing desperately needed Government Landlord Housing. Constituents will soon see the results of the ongoing sterling work being diligently carried out by Julian, Gina and the rest of the team.

C Leo (LegCo)



Dear Constituents,

This week I would like to address two areas of concern which are being raised by members of the public which impacts on the operations of the Roads Division within the Infrastructure and Transport Directorate.

Solar Lights

Since new solar lights have been installed to replace the mains operated lights in Jamestown, concerns have been raised about the lights by residents. Whilst having the same brightness as the conventional fittings, the lights are dark sky compliant and shine the light downwards rather than outward. These lights are fitted with a motion sensor which has a detection range of six metres either side of the light, and will remain on at full brightness for a period of 20 seconds. If no motion is detected, the lights will go into standby mode and will work at 30% full brightness to conserve energy. Some corrective measures have been made to allow the lights to be constantly on between 7pm and 11pm. The motion detection sensor will be activated for the remaining time. This is still not favourable with some residents who prefer the old lights. The Roads Manager has therefore contacted the manufacturers in the UK to ascertain if any further adjustments can be made.

Options to improve light coverage in places where this is deemed to be a problem is also being explored.

The new lights were funded through the Economic Development Investment Programme as a micro project, and was announced following an Exco meeting in August last year. The move towards solar lights will in time provide savings which will generate funding to procure additional solar lights to be installed around the Island and help towards creating a greener St Helena and contribute towards our efforts in reducing the effects of climate change.

Roadside vegetation

In several public meetings the public has always spoken about roadside vegetation. A number of reports have been received with regards to increased overhanging vegetation on Island Roads, due to recent rains. Trees and shrubs overhanging Island roads can look unsightly and, if the overgrowth is not managed, can be a hazard to traffic. The Roads Section has a programme in place to clean vegetation overhanging the roadsides. However, by law it is the responsibility of the landowner to

Continued on NEXT PAGE

Your Opinion Counts

clear the vegetation when it is growing on their private property and overhanging the roads.

The Roads Section is grateful to property owners who ensure that their trees and shrubs do not overgrow the highway, and asks that all residents and landowners continue to ensure at all times that trees and shrubs, including flax, do not cause a nuisance by overhanging the roads. This will free up time for the Road Section's core business of maintaining the Island's road network.

Road Section staff who carry out herbicide applications on road verges have received relevant training in the safe use and application of herbicides from an external pest control trainer (Dr Graham Harding from South Africa), who visited the Island from 11 to 25 May this year, under the Darwin Plus Invasive Plant Project. Dr Harding has been providing weed control training with his company, Invader Plant Specialists Pty Ltd, for 18 years, and has been working in the agriculture/weed control field for almost 30 years.

The training covered in depth, herbicides, how they are registered, how they are formulated, how they are used, all necessary precautions, potential risks, how to read the label correctly, different control methods, and many other subjects.

The herbicide used by our Roads team is Roundup. The active ingredient in Roundup is Glyphosate. This chemical has low toxicity in mammals (including humans). It is less toxic than caffeine, and about as toxic as table salt. Glyphosate sticks well to soil, so soil leaching and runoff risk with this chemical is low. In the soil, glyphosate has a half-life of 15.3 days, which is classed as 'Non-Persistent'. Herbicides degrade over time due to microbial action and a variety of other factors. Most Roundup products are rain fast after about two hours, which means that after a two-hour drying time, the active ingredient

will no longer wash off with water. Signs are erected every 30m to show the areas that have been treated.

Should further staff require training, this will be carried out by our Maintenance Supervisor who also received training and was certified by Dr Harding to deliver a pesticide application course in the field.

The safety data sheets that accompany the herbicide include details of how the herbicide is to be handled, stored, used and disposed of safely. Constituents are welcome to view these data sheets at the Roads Section, by arranging with Darin Francis, Maintenance Supervisor, on telephone: 23640.

Have a great week,

**Russell Yon,
Chairman,
Environment and Natural Resources
Committee.**

Councillors,

After over forty years in the commercial fishing industry supplying fish to the people of this island and overseas the present situation has me questioning the wisdom of my long standing commitment to the trade. Through the good seasons and the bad seasons the proceeds of commercial fishing allowed me to pay for my boat, build my house, rear my family and enjoy a decent quality of life. None of the previous challenges compares with the worry and financial hardship the commercial fishermen are facing right now. In the coming off-season months the situation will bring worse hardship.

I met with Richard Sim yesterday and we decided to send this email as two of the larger boat owners who are capable of catching substantial quantities of fish in what is now our peak Tuna season. I have two young adult crew members who should be earning a decent wage, my son and his cousin. Richard has his son and another crew member. A number of other boat owners in the commercial fleet are in a similar situation. How are we to keep these young men in the industry if we can only pay them pocket money for two days fishing a week when the inshore waters are black with Tuna? Sourcing local customers to sell fish to is not normally the responsibility of commercial fishermen and four

months later some are reduced to practically giving the fish away. Does this make commercial sense for any business? During this same time last year our fleet was landing upwards of 100 tons a month and it was premium fish not "pet food quality" as claimed by Johan Bezuidenhout. Who are these outsiders to be courted by our elected officials and handed our industry on a plate? Their arrogant response to a normal business request for some indication of prices for our Tuna is an insulting "how long is a piece of string". How can we depend on them for reasonable inshore prices and quotas and what happens to the commercial fishermen who won't roll over for them but want to remain independent. Will they have a quota to land? What evidence is there or guarantees that they genuinely intend to cater fairly for the inshore fleet?

I hear after years of ignoring the 2015 recommendations to remodel the existing fish factory into a compact and cost effective operation there is now an indecent haste to finally allocate major upgrade funding for the benefit of the South African bidders. Also, if I understood Friday's Saint FM broadcast correctly there are moves to withhold the CEFAS report on the scientific data we fishermen helped collect. Is this to ramrod through larger and unsafe quotas to be plundered from our Sea Mounts, again for the South Africans benefit? What will happen when they pack up and go?

The SHCFA committee is on record for the numerous attempts to offer assistance and practical expertise in the decision making process which would have avoided some of the pitfalls so often blundered into by our elected officials. At no time has this government accepted our offer or permitted any involvement. Is now really a time to distance the very people on whom this island's food security depends.

All twelve of you are accountable to the Saints for decisions made behind closed doors in the Castle. Speak up for your electorate now rather than think you can hide behind the decisions of a few.

Regards

Peter Benjamin & Richard Sim



Solomon & Company (St Helena) Plc

Main Street, Jamestown, Island of St Helena, STHL 1ZZ
Tel: 290 22380, Fax: 290 22423, Email: generalenquiries@solomons.co.sh
Web: www.solomons-sthelena.com
Prosperity Through Partnership

FOR SALE BY TENDER

Solomon & Company (St Helena) Plc has for "sale by tender" the following vehicles:

FORD FIESTA

Formerly registered as 4668
Damaged as a result of a road traffic accident
Offers not less than £1,000 will be considered

SUZUKI SX4

Formerly registered as 2184
Damaged as a result of a road traffic accident

Viewing has been set for Wednesday 27 May 2020 at 10am and persons interested in viewing should, in the first instance, contact Solomon's Insurance Office on telephone number 22860.

Offers should be made in writing to the Tender Board Secretary, clearly stating the registration number on the envelope and placed in the Company's Tender Box in their Main Office Foyer by no later than 4pm on Wednesday 03 June 2020.

20 May 2020



St Helena
Government

APPLICATION FOR DEVELOPMENT PERMISSION

NOTICE IS HEREBY GIVEN that an Application has been received in respect of the following proposal:

1. Application 2020/39: FULL Planning Application for Proposed Tree Maintenance - Removal of Low Hanging and Dry Tree Limbs, Rickmers, Grand Parade and Castle Gardens on Parcels JT0500037 and JT040007. Applicant: Crown Estates Management, St Helena Government.

Copy of the Application and Plans may be inspected by prior appointment with the Planning Section, Essex House, Main Street, Jamestown, Monday to Friday, from 8.30am to 4pm. Appointments can be made with the Secretary on Telephone 22270 or email Karen.Isaac@sainthelena.gov.sh stating the Application Reference Number they wish to inspect.

Any person who wishes to make Representations on the above Application should make them in writing within 14 days to the Planning Office, Essex House, Main Street, Jamestown or Email karen.isaac@sainthelena.gov.sh

Public Representation Closing Date: 4pm – 5th June 2020

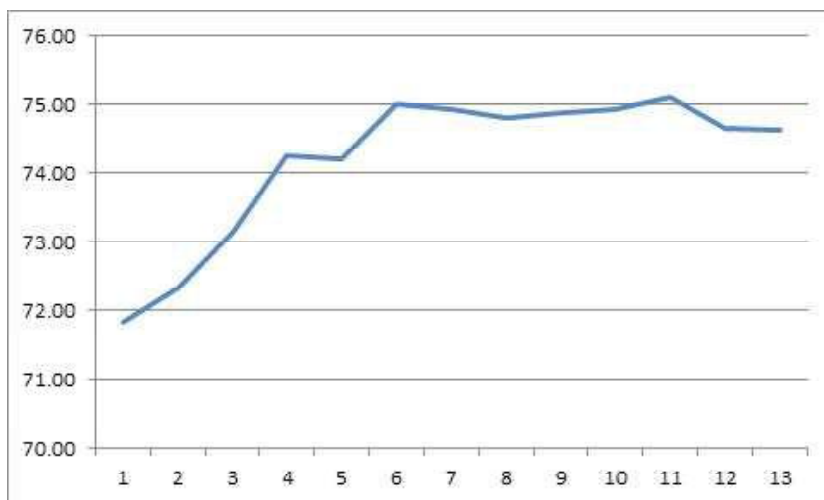
Reservoirs have stopped filling

Water storage in the reservoirs increased during the first few days of this month but there is now a slight downward trend. Water management was recently handed back to Connect St Helena by the Resilience Forum after water restrictions were eased. But the lack of rain in the last week or so has had an effect on the welcome filling of the reservoirs.

The graph shows stored water capacity for each day during May. After increases in storage levels up to 6th May the amount of water in reservoirs stopped rising and in the last few days has fallen slightly. Average daily water consump-

tion is at 1,100 cubic metres, slightly above the 1,000 cubic metres set as the limit when the water restrictions were imposed. It was repeatedly said during the water shortage that stored water in reservoirs would continue to fall if more than 1,000 cubic metres were used on a daily basis.

While the current position can be seen as an early warning of what might happen if we have another dry spell, Barry Hubbard, CEO Connect St Helena said the water levels are quite healthy for this time of year.





RESTRICTIONS ON VISITS TO CARE SETTINGS LIFTED

The following is a Public Announcement from the Children & Adults Social Care Directorate:

On Tuesday, 31 March 2020, St Helena Government (SHG) announced enhanced Social Distancing measures for the Island. One of these measures included seeking prior permission to visit care facilities.

These enhanced Social Distancing measures were extended on 17 April 2020 at all social care settings for a further four-week period. After careful consideration, the Director of Children & Adults Social Care, Tracy Poole-Nandy, has advised that restrictions are now lifted with effect from today, Friday 15 May 2020. Family and friends may visit any of our social care settings in accordance with usual service requirements and visiting arrangements. These settings are: The Community Care Centre, Cape Villa, Ebony View, Deasons Centre and designated bungalows at Piccolo Hill.

Visitors to social care settings are expected to follow SHG guidelines and adopt a sensible approach when interacting with residents. Managers will exercise their discretion particularly if there are concerns regarding overcrowding and any visitors displaying obvious signs of illness. The following are the lead contacts regarding any questions or queries regarding visits:

Community Care Centre - Rosalie Brown
Cape Villa & Deasons Centre - Gillian Brooks
Ebony View – Nicole Hercules or Deborah Baldwin
Piccolo Hill - Nicole Hercules or Kathy Yon
Day care and community services - Nicolene Adams.

The Director of Children & Adults Social Care would like to take this opportunity to thank all managers, staff, the general public, families and friends for their understanding and cooperation whilst restrictions were in place.

Discussion Point

The following letter was sent to all tenants of all Government Landlord Housing recently:

Dear Tenant,

Assessment of income for Government landlord tenants

The Social and Community Development Committee are currently considering a proposal to review the way in which we charge rents on our government landlord properties. This proposal aims to ensure that rents are charged more fairly and in line with tenant's income.

During the initial stages of this proposal approval has been given for the Housing Office to obtain statements of income from all tenants. This financial information will enable the Housing Office to assess if tenants annual income is at or in excess of £25,000 per annum.

Where it is found that a tenant's annual income or financial resources is at or exceeds £25,000 per annum these tenants will no longer be eligible for a government landlord property. The eligibility for a government landlord property is aimed at assisting those on lower incomes who cannot otherwise access the private rental market or afford to own their own homes.

Where following assessment it is found that a tenant's (which includes joint tenants) income and available financial resources are in excess of £25,000, the tenant will be served notice to vacate the government landlord property within a period of two years from the date of the notice and to find alternative housing solutions.

To assist us in completing this exercise we would be grateful if you could please provide the following information for the attention of Miss Sherilee Thomas, Housing Officer at Essex House by no later than 04th June 2020:

- 1) P60 (if applicable) along with 3 months' pay slips/ income related benefit statements/other income documents
- 2) 3 months bank statements from BoSH or other overseas banking institution (where applicable)

**People who
wonder whether
the glass is half
empty or half full
miss the point.
The glass is
refillable.**

A failure to supply this information means that we will not be able to assess your income or make a determination of your eligibility for government landlord housing, this could result in your future rent being charged incorrectly when we start stage 2 of the review.

For any questions or queries please contact the Housing Office at Essex House on 22270.

Yours faithfully,

Nikita Crowie

Deputy Head of Property

Infrastructure & Transport Directorate

**Do you have any views on this new approach from
SHG?**

**Your
Opinion
Counts**

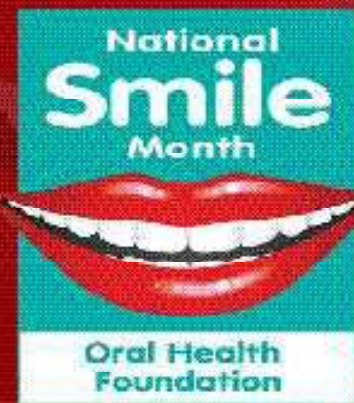
The Latest Little Bit

The MV Helena arrived as scheduled yesterday, and the discharge of cargo begins today. Procedures for outgoing cargo have closed already and the ship is due to depart for Cape Town on completion of cargo operations on Monday 25th May. The next call of the MV Helena on Voyage 29 is due to leave Cape Town on 8th June and that voyage will include a call to Ascension Island. At Tuesday night's meeting of the Chamber of Commerce, it was reported that HE Governor Dr Philip Rushbrook announced there will be no flights to STH for the next 5 months, so without the shipping service, STH would once again be isolated.

As the MV Helena is here, Port Control advises that the Jamestown Wharf is closed to all members of the public today, tomorrow and Monday 25th May due to cargo operations. Access to the Jamestown Wharf is strictly prohibited and is limited only to those who have made prior arrangements with Port Control.

The whole of Lower Ruperts, including the Jetty and Beach area, remains closed to the public until further notice.





St Helena
Government

• National Smile Month
2020 takes place between
18 May and 18 June

• National Smile Month is used to
help spread awareness of the
importance of oral health care

• St Helena Dental Department will be
publishing a series of information articles on
the different aspects of dental health

NATIONAL SMILE MONTH 2020

National Smile Month 2020 takes place between 18 May and 18 June and is used as a time to help spread awareness of the importance of oral health care.

In recognition of National Smile Month, the St Helena Dental Department will be publishing a series of information articles on the different aspects of dental health.

Senior Dental Officer, Simon Smith, commented:

"National Smile Month is our chance to take a look at our oral health, learn more about why a healthy smile is so important and share tips on how to improve and maintain it. At the Dental Clinic we are keen to provide treatments and advice for keeping teeth for life, preventing disease and reducing the risks of mouth cancers, so why not give us a call for an appointment."

Remember:

- Brush your teeth last thing at night and on at least one other occasion with a fluoride toothpaste
- Cut down on how much sugary food and drink you have, and how often you have them
- Visit your dentist regularly, as often as they recommend.

#StHelena #NationalSmileMonth #AltogetherHealthier

<https://www.facebook.com/StHelenaGovt/>

<https://twitter.com/StHelenaGovt>

**SHG
18 May 2020**

SHG Press Office | 1st Floor, The Castle | Jamestown | Tel: +290 22471

kerisha.yon@sainthelena.gov.sh | liam.yon@sainthelena.gov.sh | jodie_constantine@sainthelena.gov.sh



Visit us www.sainthelena.gov.sh



More About Fishing

As reported last week, the much-awaited SHG draft Tuna Report and associated documents arrived on island from the Centre for Environment Fisheries and Aquaculture Science (CEFAS). The Tuna report, which is a science based document, will aid SHG when taking decisions to best manage St Helena's Economic fishing zone.

The SHCFA had hoped that the report would be shared with key stakeholders immediately. They were disappointed to be told that the report cannot be shared at this time and that SHG would follow their 'normal process' of reviewing it internally before sending it back to Cefas for redrafting and only then, when SHG's Marine Conservation Officer is "happy with it" would the final report be shared for "wider consumption". Following the submission of a pertinent open letter to elected members by local fishermen Peter Benjamin and Richard Sim, Saint FM on Tuesday, launched an official media inquiry to the Director of ANRD Darren Duncan, Marine Officer Rhys Hobbs and copied elected members of the Economic Development Committee, whom it is believed have also been denied the draft document. The inquiry invited SHG officials to an interview outlining the report and why it is important for STH. In response, SHG said on Wednesday "*The CEFAS Report is undoubtedly an important tool to assist St Helena's fisheries management and wider fisheries sector decision-*



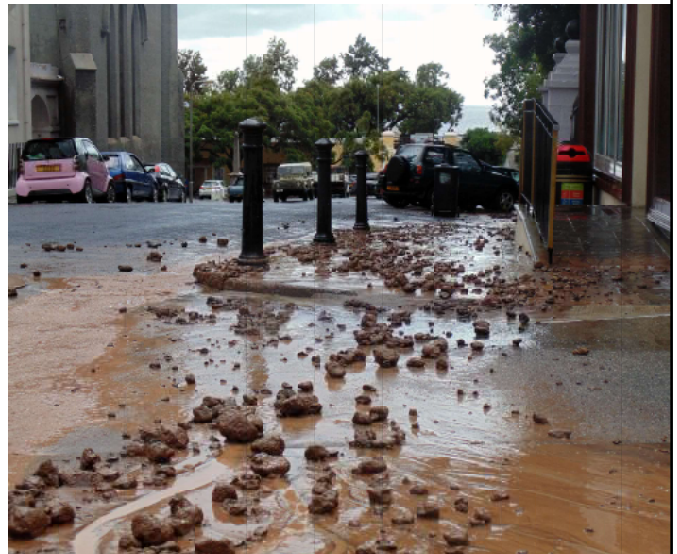
making going forward. However, we do not wish to participate in an interview with regards to outlining the Report and its contents at this stage, however, once all internal reviews have taken place the report will then be released for stakeholder review and consideration and for SHG decision-making purposes. We would then be happy to accommodate a radio interview request at that time.

It is believed that Executive Council have met to discuss the intention of approving a Memorandum of Understanding or MOU, to confirm a relationship between SHG and PQ Trading Ltd., who is the Govt's preferred investor to undertake fish processing operations on STH. We await in anticipation, news of the meeting outcome and further details of the decision-making process surrounding the draft Tuna Report.

Rainy St Helena Day

Reports from various districts around the Island describe torrential rains pouring yesterday, causing volumes of debris to be washed onto the main roads. Drivers were asked to exercise extreme caution whilst travelling around the Island and the streets of Jamestown were seen to be awash with streams of muddy water, stones and debris which had to be cleared by the Highway Maintenance teams. On STH's Day, some perceived this to be a gift after a rather extended drought period which caused serious concerns of water shortage on the Island.

The heavy rains stopped in time to allow the weekly 'Clap for



our Carers' parade through Jamestown, enhanced last night with the MV Helena blowing the ship's whistle at 8 pm.

With social distancing in mind, several other celebrations were advertised around the Island yesterday such as a Mixed Grill Bring and Braai in Levelwood; a family day out and live music in Sandy Bay; a friendly fishing competition at the Yacht Club; a sail-around outside the Jamestown harbour by visiting yachts; and many took advantage of some retail therapy in the form of shopping in St Paul's before rounding off the day with music videos and dancing at Donny's on the Seafront.



St Helena Coffee Shop. The Leisure Park

Sit by the sea and savour the soft symphony of sensuous, sophisticated, stupendous, stunning, and seductive sensations of the superlative St Helena Coffee.

Freshly roasted top quality bean of freshly ground coffee available from the coffee shop.

Growers of St Helena Coffee for 25 Years

Roasters of St Helena Coffee for 18 Years

It's Not Just Coffee-It's St Helena Coffee

INDY PICTURE QUIZ.....Series 1 Blast From The Past Picture 19...

***THIS LADY IS RELATED TO A
LOCAL ARTIST WHO STARRED IN
THE ST HELENA DAY RADIO
CELEBRATIONS
YESTERDAY....***

***WHAT WAS HER NAME WHEN
THIS PICTURE WAS TAKEN,
QUITE A FEW GOOD MOONS
AGO?***

Tune in to this afternoon's Shine Show with Sharon Wade and submit your answers at the specified time...

SURPRISE PRIZE FOR THE WINNER!!!





MENTAL HEALTH AWARENESS WEEK 2020

Mental Health Awareness Week takes place between 18 and 24 May 2020. This year's theme is kindness. This is an important week to remind us of the importance of taking care of ourselves and those in our community.

We thought it would be a great time to introduce our very own Mental Health Team here on St Helena. We are proud to be one of the most accessible mental health services in the world. We offer a wide range of services, which cover the life span (cradle to grave) and every type of recognised condition which is included as mental health. Some of the conditions we offer diagnostics and treatment for may not be known to you.

We work within the Health Directorate and are based at St John's Villa behind the General Hospital.

The most common difficulties that people come to us with are anxiety, depression, alcohol problems, psychotic illnesses and neurodevelopmental conditions such as autism, and attention deficit hyperactivity disorder.

We use evidence-based ways of working, which we most commonly take from guidance in the UK, (such as National Institute of Clinical Excellence (<https://pathways.nice.org.uk/>)) which anyone can access and helps us to offer the best service we can.

We are open for regular appointments from 8.30am-4pm Mondays to Fridays and also have an out of hours 'on-call' arrangement for urgent referrals. We take referrals from people themselves, teachers, doctors, parents and anyone in the community. This is one of the few places in the world where this is possible.

- Mental Health Team, St Helena



Sherilea Curzon



Hi, most people know me as Sheri, I have been working on St Helena since September 2018 as the Team Leader of the Mental Health Team. I am not new to the Island as my mother was from here and I had holidayed on-Island twice before coming here to live. My career spans some 37 years having trained in Portsmouth (where I was born) as a Registered Mental Health Nurse from 1982 – 1985. I have worked in London, Australia and Wales having had a variety of work experiences mostly in senior positions. My role working here on St Helena is to ensure that the team works together professionally and cohesively and that we offer a service that spans across all age ranges and deals effectively with all types of mental ill health using evidence- based practice where possible. Our remit is wide and the team of five staff aim to provide a good quality of service, within our resources, to meet the needs of the population of St Helena that are referred to the Mental Health Team. I have really enjoyed working here and feel privileged to have been given this opportunity.

Ian Rummery



I am a Community Psychiatric Nurse (CPN) for adults. This means that I work with adults experiencing mental health problems. There are many ways to help people with mental health problems including talking therapies and medication. I may also monitor a person's physical health as well as working closely with other health professionals and social services as it is important to take a whole person approach to caring for people with mental health problems. I also support the Police, Probation and Prison Services to provide a health care service for offenders. I feel very privileged to serve the community in this role, it is the best job I have ever had. I have learned so much since taking up this post and what I am reminded of daily is that mental health problems can affect anyone. Treatment and support is available but sadly too often people are ashamed to ask for help for fear of being stigmatised so they suffer in

silence. We respect that people can often find it difficult to ask for help but we will always do our best to meet the person where they are most comfortable which is often in their own homes.

Tara Murphy



Hello, I am a Clinical Psychologist. This means that I am a (non-medical) doctor trained in providing diagnostics and treatments for children, adults and older adults who are struggling with their mental health. My training (in the early 2000s) was initially broad in all areas of mental health. Since I qualified, I have focused working with individuals on neurodevelopmental conditions (such as autism and brain injury following stroke or other neurological injury). I see the importance of working with the vulnerable person alongside important people in their system. Anyone who has come for help with me here on St Helena, knows that I often like to work with parents, partners, and employers etc to help get the best outcomes. In the 16 months that I have been on-Island, I have worked with people with anxiety, depression, autism, Tourette syndrome, post-traumatic stress disorder, dyslexia, the list goes on. It's very busy and there is usually a wait for me to see you which might be between a couple of weeks and a few months for a longer assessment. I use evidence-based models of treatment, primarily cognitive behavioural therapy and adapt it for the needs of the individual. Alongside really enjoying the clinical work here on St Helena, I have fallen in love with the beautiful Island; its amazing scenery and friendly people. You might see me walking to and from work each day which makes being here a great experience and very positive for mental and physical health!

Maggie Banks



I am the Educational Psychologist on-Island. This means I am interested in how children learn and I try to help all children on St Helena get the chance to learn and to fulfil their potential. I help the people around the child get a good understanding of the child's needs and what may help them to get on

well with their learning, their emotions and their behaviour. Sometimes I may meet with children individually, but usually I'll meet with parents and teachers. Sometimes I run small groups for children to help them develop social skills. I also deliver training to education staff to help them get the best from the children in their schools. Since leaving Scotland to come and live and work on St Helena, I've thoroughly enjoyed meeting many children and families and all the Education staff. I've been impressed by the resilience shown by many children and hope I can help them to build on this so they can become successful adults. I work with both the Mental Health Team and with the Inclusion Service, so you can get in contact with me through either service, or through your child's school.

Samantha Williams



Hi, my name is Samantha Williams, I am the Lead Child & Adolescent Mental Health Services (CAMHS) Nurse and also a Community Psychiatric Nurse (CPN). As a CAMHS Nurse, my role is to assess, support and give guidance to children from the age of 18 and under. This would be in collaboration with others from the Multi-disciplinary Team (MDT) such as the Clinical Psychologist, Educational Psychologist, Doctors, Nurses, Social Services for children, CPNs and the Police. Also, more importantly, is the collaboration with the parents, teachers and School Nurse. As a CPN my role would be supporting adults within the community whom may present with a variety of problems or assisting individuals during a crisis, bereavement or emotional turmoil. I have been back on-Island for six months now so I'm still in the process of finding my feet and getting to know everyone, however, I have worked with the Mental Health Services and fellow CPN, Ian Rummery, prior to leaving the Island 15 years ago when it was located at Sundale. I first did my Nurse training on-Island then went on to do four years training at Queens University in Belfast and then went on to work within the Mental Health Services in Belfast for 10 years gathering experience and knowledge from a wide range of disciplines under the Mental Health umbrella.

As a returning Saint, I do feel honoured to have had this opportunity to give back to the Island my services, experiences and expertise. I hope I can also be a mascot for other St Helenians to show that it is possible to have these sort of jobs/roles on-Island if you have the right criteria for the job. Work hard, be focused, stay consistent and most of all enjoy the journey.