

THE ST HELENA Est. 2005 INDEPENDENT

VOLUME XIV ISSUE 45, 11th OCTOBER 2019, PRICE £1

An independent newspaper in association with Saint FM and St Helena Online

PASH Global's plans for more renewable energy



Cape Verde – a Better Prospect than South Africa



Two years of flights from Jo-burg on Saturday



***Longwood House:
A Pattern to Follow***

Tammy Williams

**INDY PICTURE
QUIZ...**

**Series 1 Blast From The Past
Picture 4...
Inside**

**LETTER:
PAY PEOPLE WHAT
THEY ARE WORTH !!!**

Cape Verde – a better prospect than South Africa

Bits of information are bubbling up to the surface from the depths of government secrecy about plans to get another St Helena air service off the ground. The proposed air service links existing routes between European destinations and Cape Verde with a new service between Cape Verde and St Helena. It appears several business interests are involved with the Cape Verde national airline, Cabo Verde Airlines, who would operate the air service. Cabo Verde Airlines already operates services to Paris, Rome, Milan and Lisbon and has plans to add London to their network next year.

Atlantic Star Airlines are also involved but the extent of their involvement is not yet clear. However Atlantic Star is already working with Cabo Verde Airlines on planning the new service. In an email sent last August to the *Independent* Richard Brown, Atlantic Star Principal, mentioned he knew Paul O'Sullivan of St Helena Corporation and Trade Winds, St Helena Island, "very well". Also in August the *Independent* quoted extensively from an exchange of emails with Paul O'Sullivan about his plans for St Helena. He said, "This latest acquisition (Horse Pasture) is intended to consolidate our position on the island, in advance of a capital-raising to commence the developments we have lined up. Together with our **ambition to establish direct flights from Europe** we believe the island has a very bright future in terms of attracting tourism and investment." Pressed further on this O'Sullivan added, "We have teamed up with people in London and South Africa, who share our vision and we are serious about seeing such flights, which are still in the planning and feasibility stage. It would need a capital raising of about \$5million (£4.15 million)." It appears O'Sullivan is leading this project. Having had a previous interest in a cargo airline, he told the *Independent* last August "it's not a major leap to a small airline, servicing St Helena." Cabo Verde Airlines and Atlantic Star are also closely involved. What has been made clear is that negotiations between this new airline consortium and SHG have reached a crucial stage and much depends on important decisions being made expeditiously. The schedule being worked on at present is an afternoon departure from London Gatwick which would arrive in Cape Verde late in the evening; a flight time of just less than six hours. After refuelling and taking on passengers from other originating airports the air service would continue to St Helena as a night flight, arriving early the following morning after a flight of about five hours. The return flight would be on the same route with the same call at Cape Verde's Amilcar Cabral International Airport on Cape Verde's Sal Island.



Inside Amilcar Cabral International Airport – often called Sal Airport

Cabo Verde Airlines have scheduled flights in Europe to Paris, Milan, Rome and Lisbon and to Boston (US) and Fortaleza, Recife and Salvador da Bahia in Brazil. In Africa the current destination is Dakar (Senegal). In December further destinations will be added to the Cabo Verde Airlines Network. These include Washington DC (US), Port Alegre (Brazil), Luanda (Angola) and Lagos (Nigeria). Then next year it is planned to add London Gatwick to the Cabo Verde network.

The Cape Verde government have plans to restructure and sell the state-owned national airline. First, Loftleidir Icelandic, who has previously worked with Atlantic Star, entered into a one year management contract to run Cabo Verde Airlines. More recently the Icelandic airline took a 51% ownership of Cabo Verde Airlines with plans to take advantage of the geographical position of Cape Verde and develop a hub and spoke operation with Cabo Verde Airlines making Sal Airport an interchange point for flights to and from North and South America, Europe, West Africa and maybe soon, St Helena.

At present Cabo Verde Airlines use Boeing 757s; performance studies show the B757 can operate on the Cape Verde to St Helena route with more than 100 passengers and 1,000 KG of cargo. Loftleidir Icelandic has plans to introduce more planes to the Cabo Verde Airlines network in the future. The 757 was first in service in 1981 and the last 757 was manufactured in 2004. There are still 664 in service with many airlines of the 1,049 Boeing 757s that were built; Loftleidir Icelandic has 29 of them. Being an older aircraft it likely the cost of leasing/operating the 757 will be less than for newer aircraft and this should be reflected in a ticket price which is better value for money than St Helena air passengers get at the moment.

Passenger and cargo bookings could be made through Cabo Verde Airlines website and, if agreement is reached with SHG under the 'open skies' policy, arrangements would be made with Solomon's to be a ticket and cargo agent.



Sal Island, Cape Verde – ideal place for Saints to have a week away during the southern winter. White sandy beaches, blue sky, temperatures 10 degrees higher and hardly any rain.

At first sight, the proposed schedule and possible connections using Cape Verde as the hub appears to be a vast improvement on the Johannesburg set up where the promised Cape Town connection never worked and all other links into

Cape Verde – a better prospect than South Africa

the Jo-burg hub require an overnight stay in a hotel.

The afternoon departure from Gatwick gives time for people in most parts of Britain to make a same day connection by car, train or domestic flight. The late evening departure from Sal Airport, Cape Verde gives the opportunity for people wanting to connect with the St Helena flight to leave airports in Brazil, United States, France, Italy and Portugal on a direct flight to Sal Airport.

Arriving at St Helena in time for breakfast adds half a day to any visitor's holiday compared with the present afternoon arrivals.

The idea of a two centre holiday which has often been mentioned (where people visiting South Africa add a week in St Helena) could make more sense if St Helena is paired with Cape Verde. People who choose to visit one Atlantic Island (Cape Verde) are more likely to consider visiting another (St Helena) than people who would rather visit Johannesburg or Cape Town and there are several similarities in the histories of St Helena and Cape Verde.



The Boeing 757 in Cabo Verde Airlines colours

In the first three months of this year 233,721 people chose Cape Verde as their tourist destination; an 8.5% increase on last year. The Island of Sal, where flights depart for St Helena, received 45% of all Cape Verde's tourists. The UK heads the list showing which countries Cape Verde tourist come from, France is in second place. Brits also stay longer in Cape Verde than people from other countries. Other European countries make up the main markets for Cape Verde tourists. This visitor country of origin pattern is very similar to St Helena's. Piggy-backing on Cape Verde's expanding tourism sector is more likely to bring faster and larger benefits compared with South Africa. **More About Air Service on Page 30**

ST HELENA WATER USAGE CONTINUES TO RISE

St Helena's water consumption levels continue to rise above 1000 cubic metres per day. This consumption rate cannot continue if we are to maintain safe water levels for the Island.

It might appear that the reservoirs aren't suffering as people see, for instance at Hutt's Gate, the two reservoirs are about 65% full. However, this is due to water being pumped daily from boreholes at Fishers Valley and Borehole 5 to Hutt's Gate. Getting the water from there to Red Hill is an issue where the Earth Dam is empty and the other Harpers reservoirs are dangerously low. The majority of the water in the Red Hill zone is in Scott's Mill reservoir. Currently, reservoir volumes overall is 41%, but at this time of the year we would expect them to be 100% full which would then provide sufficient reserves for the summer consumption. Despite Connect's pumping systems working well, it is essential that we all continue to reduce our water consumption.

Emergency Planning and Sea Rescue Manager, Simon Wade, appeals to the community to make every effort to keep water consumption to essential use only. Simon said: "There is just over 4000 people living on St Helena. We can make a difference by simply trying one of these water savings tips; if we placed a one litre water bottle in each of our toilet systems, and averaging that we generally flush our toilets twice a day, we could be saving up to 8000 litres of water per day, just by flushing toilets alone!"

The weather forecast for St Helena suggests that we will experience mostly cloudy days with occasional showers, but will become mainly dry with a few bright or sunny spells.

The public is reminded that we are currently under an Island-wide hosepipe ban. If you see anyone using water irresponsibly or notice a burst pipe or leak, then please inform Connect immediately.



bly or notice a burst pipe or leak, then please inform Connect immediately.

Every drop counts, every action counts – save water now to be safe later

St Helena Resilience Forum, 10 October 2019

Serena's Gift Shop

Phone : 22792

| | | | |
|---------------|---------------|----------------|---------------|
| <p>£27.90</p> | <p>£6.50</p> | <p>£6.25</p> | |
| <p>£24.95</p> | <p>£10.60</p> | <p>£117.50</p> | |
| <p>£22.90</p> | <p>£14.95</p> | <p>£48.50</p> | <p>£25.40</p> |
| <p>£19.05</p> | | | |



Tel: [+290] 22327
 Email: independent@helanta.co.sh
 http: www.saint.fm

Editorial

This is a story about a cupboard with one key. On the face of it that sounds fine, except that inside this particular cupboard there are four electricity meters. Four are provided so that four different street traders can have access to electric power when they want to trade. The problem is there is only one key. After the first trader has become the proud owner of this highly prized and unique item it is impossible for any other local entrepreneur to gain access to any of the three remaining meters.

I was a fly on the wall when this silly situation (some may say incredibly stupid situation) was explained to a member of the board of Connect St Helena. They provide the unusable facility and presumably they provide the one key to go with it. The very unsatisfactory and unexpected response from the Connect board member was that board members do not get involved with personal problems. The fact is the problem is a system / administrative failure involving Connect which has caused unnecessary personal problems for people who just want to earn a living. Can Connect get this sorted out by cutting three more keys? We shall see.

As is the way in St Helena that is not the entire story; the Highway Authority are involved because it is street trading and a permit to trade on the Queen's Highway is required. It may be the Highway Authority who provided the cupboard to house the meters. It all gets so complicated so easily in St Helena. Anyway, forms need to be completed, clerks need to be phoned, emailed and seen to get the simplest of procedural blockages sorted out; and as usual clerks cannot make any decisions without referring to a higher authority. Any spark of initiative any clerk has is drummed out of them.

When this tale of woe was told to me it was revealed the Right Honourable Russell Yon, member of Exco – the highest and most important decision-making authority in the land, is for some strange reason directly involved with this particular paper-shuffling procedure. Is the weighty responsibility for getting three more keys cut on the shoulders of the government? Is Russell Yon the one to sort this out; or is Russell Yon the cause of the problem? Why is Russell Yon involved with this anyway?

If we fast forward for a moment to the way things work in the 21st century, there is in existence a multi-user pre-paid electric meter. It's just one meter and any number of users can have the benefit of the service it provides. All that happens is the user pushes his or her debit or credit card into the slot to pay for enough electricity for whatever pur-

pose it is needed. It could not be easier.

Sadly, the everyday technological required to use this meter is beyond the range of technological facilities available here. Debit card? Credit card? Forget it! So let's get back to getting those three extra keys cut. How is accountable? How about doing it today? Can Russell have a quick chat with Barry and make this silly situation a thing of the past? We shall see?



By the way, across the road from Rosies is the main gated entrance to the area where the Ladder Hill guns are situated. These gates are kept locked when no-one is inside for whatever reason. There is not just one chain and one padlock securing the entrance; there is a chain made of many interlinked padlocks keeping one gate locked with the other. Each padlock belongs to a different user requiring access to the area. Each has his or her own padlock which is part of the padlock chain and of course the personal key to unfasten the personal padlock and unlock the gates. An unusual way of doing things but as far as I know, it works. Laugh and the world laughs with you – so they say. The wind is supposed to be dropping over the weekend, let's hope so.

Vince

INDY PICTURE QUIZ.....Series 1 Blast From The Past

Picture 4...



MATCH THIS OLD PICTURE TO TODAY'S SCENE..... ALONG WITH PIKE'S COTTAGE, HOW MANY PROPERTIES ARE STILL LOCATED WITHIN THE SAME BUILDING FOOTPRINT TODAY? (Meaning....they were not totally demolished, just renovated.)

Answers to be called in on this afternoon's Shine Show with Sharon Wade...**you will be advised when the lines are open to call in your answers** and there will be a nice prize for the first person to call in with the correct name... *SORRY—NO CLUES TODAY..Big Prize!*

PASH Global's plans for more renewable energy



A crane lifting the generator into position for a wind turbine of the same type PASH Global plan to erect on Deadwood Plain

A development application from PASH Global will soon be considered by the Land Development Control Authority for three more wind turbines on Deadwood Plain. The new turbines will be situated north of the current group of twelve. Two hundred metres will separate the closest turbine of the present group from the nearest of the three new turbines. All three new turbines will be spaced about 200 metres apart.

The new turbines are Enercon E-44 900kW and stand 55 metres high to the hub and 77 metres from the tip of the blade to the ground when in the blade is in the upright position.

Additional overhead and buried HV cables will feed energy output to the energy storage system planned to be located near the southern end of the current array of wind turbines next to the Haul Road.



An energy storage system with the roof removed, showing the interior.

There will also be additional access built to take the weight of the towers, the heavy haulage vehicle which will transport them from Rupert's wharf, along the Haul Road to Deadwood Plain and the crane needed to lift the sections of tower, the hub, generator and blades into position. There will also be additional units to house the switchgear.

It is not yet known when PASH Global's development application will be considered by the Land Development Control Authority however, as the application was received in September it should be on the agenda for the November meeting

of the LDCA if determination of the application is to meet the time target.

While the additional solar panels required as part of the renewable energy project will be the subject of a separate development application, the papers with the wind turbine application included correspondence to PASH Global from a previous Chief Planning Officer, Rianna de Wet, which indicated a solar farm located on Pipe Ridge is likely to receive favourable consideration. The rifle range site at Half Tree Hollow had proved unpopular with residents in the area and an alternative site was preferred for the additional solar panels needed as part of the renewable energy project. There are no development proposals yet nor planning guidance in place for the areas along Pipe Ridge which have been opened up for development by the construction of the Haul Road.

Survey work starts on Trade Winds Village at Horse Pasture

The contours and spot heights on existing survey data for Horse Pasture proved to be inaccurate enough to require all survey work to be started again from scratch. No this has been completed work will start again on the layout design for the range of facilities to be provided at Horse Pasture under the Trade Winds Village project.

The site was pegged out yesterday for some of the communal facilities to be provided as part of the project. The facilities will include BBQ stands, shelters, car parking, picnic and camping areas, toilet facilities and facilities for washing dishes. It is possible the communal facilities will be completed and available for use in advance of the rest of the development.

Big and Sweet



Pennell Henry walked into the Saint FM studios yesterday with a sweet potato weighing at least three kilos. It was grown by friend in Levelwood. Johnny Drummond can be seen over Pennell's shoulder, looking on with interest.

Longwood house: A pattern to follow

Tammy Williams

It's hard to imagine St Helena without Napoleon, romance and sentimentality aside it is one of those historic legacies dropped on us quite by chance, for the people of that day could not know that the people of our day may have viewed Napoleon as simply a way to the big bucks, an exploitation of his captivity, a taking advantage of the product for financial gain. Could it be that a ruthless, heartless marketing campaign of this man be a part of the puzzle that helps St Helena reach economic acclaim?

I have to admit that it's been a while since I took a tour of Napoleon's house, standing in unobtrusive silence at Longwood I t was two weeks ago that Gavin and I took a proper formalised tour through the gilded halls shrouded in melancholic loneliness, you can't shake it off, that aura, that feeling of desolation and sadness.

We toured using the audio guides which have been in operation since 2016, modelled here by Bradley Crowie, one of the custodians of the building, the tour lasts just over two hours and is a fascinating and surprising delve into the era, I urge Saints to go back to Napoleon's House just for the audio, it will help you appreciate this historical monument that much more.



Napoleon's House has undergone much painstaking restoration over the years led by the French Consul Michel Dancoise-Martineau, whom along with his husband JJ and an incredible team of Saints have created a magical masterpiece. The restoration and subsequent completion of the product to present day is nothing short of a miracle in these financially difficult times and most humbling of all, having done so little the island gets to benefit from its' stately finish.

But what is a museum without the people? It is clear to me that the team at Longwood House have taken ownership of Longwood House in the same way our voluntary presenters at Saint FM have, and in doing so have given many years of devoted and faithful service to something that is quite possibly beyond our life spans. The local knowledge and skills that can be found at Napoleon's House is inspiring and yet



Ivy Yon: Napoleon's House Guide

unassuming, how does one amass a team of this nature without first establishing traits of loyalty and dependability?

Before you exclaim 'Ah, not another story about Napoleon', I want to assure you that this is not that kind of story, at least not now, no, this is an entirely different matter, it's about a product and the ability of an amazing group of people who work together to make it possibly the best historical museum on St Helena.

There has always been dinner table discussions around Napoleon and the moral dilemma that he poses for some people, whatever you think of him, friend, fiend or foe, he has commercial appeal, why does the rest of the world when talking about St Helena refer to it as being the place of Exile for the emperor, it is foolish to think that St Helena made Napoleon famous, rather he has left a peculiar promotional opportunity for the island to make money of him, to manipulate his sorry status and take full advantage of the tourism potential. The team at Longwood House know that to argue the moral element would keep them from their greater duty as custodians of history and time, they know too that as keepers at the gate their role is to preserve a record of St Helena's past, who has time for ethical arguments?

Recently a new addition to Napoleon's House is the wine



Longwood house: A pattern to follow

Tammy Williams



The Room in which Napoleon died

shop which sells wines exclusively from Groot Constantia including the Wine of Exile, Napoleon's favourite, the wines are sold at good prices, ranging from £9-£27 for a bottle of either red, white and Rose or if you feeling adventurous, the wine of Exile retails between £50-£65. This is another good idea in exploiting a name; you will see eventually where I am going with this.



Heroes next door: Angie, Anthony, Ivy, Merrill, Byron, Ralf, Bradley and Georgie



In April 2021 the island will commemorate the Bi-centenary of Napoleon's death and much has been planned around this event which has been hailed to be one of the biggest tourism events on St Helena. Despite the event being just 16 months away actual information about what St Helena will be doing remains sporadic however I am heartened by what we find at the Napoleonic properties, a program of events engineered and created by the French domains on St Helena exists, so now, what will St Helena do?

It is entirely in the reach of Saints to capitalise on the Bi-centenary themselves, for the island is no stranger to grand events and royal celebrations. There is a golden opportunity for hoteliers, guesthouses, restaurateurs, taxis, tour operators, crafts people, wood workers, artists, musicians, community organisations, schools and churches to financially benefit from the event, we already know what the Napoleonic properties on island are doing, now all you have to do is come to the party.

**Next week:
Bi-centenary 2021:
The Saint Connection
What can you do to prepare?**



**Angie and Bradley:
Beaming customer
service**



**Warm hats keep out the
biting Longwood chill**

Next door to the wine shop is the Boutique gift shop, primarily managed by Angie Mittens, who admits that people are amazed at what they find, there are books, most of which authored by Michel including crafts and designs by JJ, a good range of postcards, souvenirs and gifts capturing elements of St Helena and Napoleon, a delicious selection of hand made chocolates means all needs are catered to, everything contained within the gift shop is exclusive to Napoleon's house and Angie knows her customers, ranging from cruise ships to those who arrive by plane. Busy days are best says Angie, which puts the pressure on the need for increased visitor numbers, it gets exciting and one imagines a range of emotions from elated Napoleon enthusiasts, history buffs, nosy journalists and intrepid explorers, one thing is for sure, they all, in some shape or form, make their way to Napoleon's House.

The grounds at Napoleon's House are beautifully maintained and they are within themselves a full time job, an array of Lillie's, Agapanthus, shrubs and trees need careful love and tending while encompassing the French flag, a symbol itself of acceptance and inclusion, the people of Longwood have no objection.

Your Opinion Counts

Dear Editor,

Despite being surrounded by the second biggest ocean in the world, there is no fish

Despite there are fields where cattle graze, there is no fresh milk.

Despite there are acres of arable land, Vegetables are not always available and expensive.

Despite there are springs of water cascading down the hillsides into the sea, There is a shortage of water.

Despite we now have an airport, hotels and private accommodation are empty, There are very few tourists.

Despite there are regulatory bodies set up (probably too many) to oversee the management of our island's affairs - no one has the decency to apologise for their mistakes and goof ups.

What is going on??? We look to our leaders and representatives to get off their behinds and do something about it.

There is no doubt our people is of one mind that is -Our island is certainly NOT going forward as predicted by economists and consultants. Sad to be negative it seems that we certainly are going backwards.

Contributed by Yours sincerely.

Dear Editor,

PAY PEOPLE WHAT THEY ARE WORTH !!!

Dear editor i know that St Helena is going through some tough times at the moment but its of no wonder why the island is losing Saints to work for decent money abroad.

In last weeks Independent newspaper, (4/10/19) I was disgusted to see SHG had advertised a job vacancy for an electrician paying just £6772 per year, that's

the equivalent of £130 per week, and with testing experience, which in the U.K. is known as an approved electrician, next level up from an electrician, well "WOW", what an absolute joke, this is a qualified, skilled tradesman that we're talking about. Over here in the U.K. it's totally feasible to earn £1000 per week or more for that particular job role, not that I would expect any where near that over on St Helena, but come on, please be realistic, the wage on offer is more like that of a 2nd year apprentice of 17 years of age, here in the U.K. or even liken to a wage from the 1970's.

SHG recently have been talking about, how can we try to stop people leaving the island for work etc? How can we tempt Saints to come back home? Well how about paying people what they are worth, or at least a real living wage.

What SHG is offering for this particular job vacancy is less than what a shop assistant gets per month with just about no responsibility, not that I'm knocking shop assistants. To become a properly qualified BS7671 17th edition electrician in the U.K. you must serve a 5 year apprenticeship within a company, comprising of 2 years of college, then 3 years on the job training/work experience, which has to be signed off regularly by a JTL officer to gain the correct electrical experience and qualifications after passing numerous exams, to then gain NVQ level 3 and then if you want to be an installation tester there is another difficult 2391 course that needs to be completed so that installations can be signed off and certified correctly.

On top of that their can be regulation amendment and health and safety courses to attend and pass as regulations can change occasionally.

Like now, as the 18th edition is out in the U.K.

As an electrician comes a lot of responsibility, making sure the correct size cables and types are used, the correct fuse sizes and types, placing of equipment in correct zones, the use of correct equipment within installations, loading, earthing the list goes on and on, electricity is very dangerous, if none of this is adhered to, people could die or get seriously hurt through fire or electrocution, so a vast amount of knowledge, experience and responsibility is needed.

So after all of the said above £6772 per year is just an insult to the intelligence of a skilled, qualified electrician.

And how is a family meant to live on this measly wage with ever rising freight, rent, utility bills, internet, phone, television and the ridiculous prices of products in the shops, it's of no wonder why theft type crime is rising and the need for a larger prison due partly to extremely over inflated costs of everything and very low wages.

SHG and others really need to sort out their wage structures and the obscene rising costs of just about everything (bringing back the shipping subsidy or somehow cheaper shipping would be a major help) if they want to try to tempt locals from leaving for jobs abroad and also tempting Saints back home, SHG and others need to get realistic and please PAY PEOPLE WHAT THEY ARE WORTH.

From a concerned, angry Saint electrician working in the U.K. and with great sadness, unfortunately I will never be tempted to come back home whilst this sort of insult of a wage is on offer.

Note: After heavy criticism SHG withdrew the advert for an electrician on Tuesday of this week. Ed

Are you looking for work in the heart of Jamestown?

We are looking for hard working person with a positive attitude with the ability to multitask. Opportunities available are casual or part time cook.

Experience is desirable but a strong work ethic and reliability is essential as training can be provided. Please contact us within 2 weeks to secure a potential new career that will offer genuine employee rewards as the business grows.

If you are interested and require more details outline the role then please contact Annie Clarke on 23929 or st sensation@gmail.com

QUEEN'S BIRTHDAY HONOURS 2020 OVERSEAS LIST

The Foreign and Commonwealth Office invites nominations for the 2020 Queen's Birthday Honours List.

Persons wishing to submit nominations for the 2020 Birthday Honours are reminded that the overriding principle is that honours are awarded on merit for exceptional achievement or any service recently carried out over and above what normally is expected. Where possible, nominations should place emphasis on voluntary services.

It should also be noted that age is not a factor in awarding honours and younger members of the community who have made an outstanding contribution or have given exceptional service, should not be overlooked. **It is important that nominations are kept confidential and that nominees are not made aware that they are being proposed for award of an Honour.**

Nomination forms are available from Corporate Support at the Castle and can also be requested by email from Miss Linda Benjamin via: linda.benjamin@sainthelena.gov.sh.

Completed forms should be returned to the Executive Secretary, Honours Committee, in a sealed envelope, marked Confidential, by Friday, 1 November 2019.

#StHelena #BirthdayHonours #FCO #NominationsInvited

<https://www.facebook.com/StHelenaGovt/>
<https://twitter.com/StHelenaGovt>



St Helena
Government

SHG
7 October 2019



St Helena
Government

CHEVENING SCHOLARSHIPS APPLICATIONS OPEN



CHEVENING

The UK Government's global Chevening Scholarship Programme for study in the UK in 2020/2021 is now open for applications until Tuesday, 5 November 2019.

To apply, candidates must meet certain criteria including:

- Having completed all components of an undergraduate degree that will enable entry into a postgraduate programme in the UK
- Having at least two years' work experience
- Returning to St Helena for a minimum of two years following the course

Further information and guidance on eligibility can be found at: www.chevening.org/scholarships/who-can-apply/eligibility.

Past St Helena Chevening Scholar, Dax Richards, encourages potential future scholars to take advantage of this opportunity. Dax said:

"The Chevening Scholarship Programme is an outlet for anyone interested in accomplishing their career aspirations. I was fortunate to be given that opportunity by the Foreign and Commonwealth Office to access the Scholarship that set me on the path to becoming a qualified Accountant. I would encourage anyone thinking about taking the step to the next level to apply for the Chevening Scholarship and benefit from the experience of studying and the support network associated with this Programme."

Manager of the Governor's Office, Kerry Lane, is able to provide advice and support locally. For more information, please call Kerry on 22308 or email her via: Kerry.Lane@fco.gov.uk.

#StHelena #CheveningScholarships #FCO

<https://www.facebook.com/StHelenaGovt/>
<https://twitter.com/StHelenaGovt>

SHG, 8 October 2019

Brexit – The UK’s Departure From The EU: An Update From The Governor

Brexit is almost upon us - the UK Prime Minister has made it clear that the UK will be leaving the European Union on 31 October. I want to share with you the work the St Helena and UK Governments are doing, how Brexit impacts St Helena and what actions people may need to take. As ever, do feel free to contact me direct - via linda.glanville@sainthelena.gov.sh - with your questions and views.

What is Brexit?

Brexit is the UK’s departure from the EU. This follows a referendum in June 2016 in Britain on the UK’s membership. A majority of voters voted ‘leave’, whilst other voters wanted to ‘remain’.

What is the current situation?

Boris Johnson became the UK Prime Minister in July; he has made it clear the UK will be leaving the EU on 31 October. Previously, the deadline was 29 March. This was extended by the EU at the UK’s request. The previous Prime Minister, Theresa May, negotiated a withdrawal agreement with the EU. This agreement received mixed views amongst politicians and she was unable to secure the support of the UK Parliament. There were various areas of disagreement. The most prominent was the requirement in that agreement to require Northern Ireland to remain more closely connected to the EU than the rest of the UK after the UK’s departure. This is known as the ‘Irish Backstop’ measure.

The UK Government’s position is that the UK would prefer to leave the EU with a deal, and it continues to work in a determined and energetic way to secure one for the UK and its Overseas Territories.

As or when the UK departs the EU, the UK Government has announced a 12-month temporary tariff regime in the event of a no-deal withdrawal. This regime eliminates tariffs across the majority of goods imported from both the EU and the rest of the world. Negotiations between the UK Government and the EU are continuing but there is no indication yet an agreement will be reached before 31 October.

What is the UK Government doing?

To help ensure everyone is prepared, as a responsible government, the UK Government has taken a number of steps to ensure people and businesses are prepared for all eventualities, including a no-deal. For the Overseas Territories, the UK Government has put in place a number of measures, including a guarantee to cover the costs of EU-funded projects already scheduled, a trade arrangement to ensure continued access to the UK market on the present tariff-free terms for Overseas Territories’ goods, and an in-depth exploration of citizens’ rights issues which could affect the Overseas Territories. For access to the EU market the UK Government is working to negotiate the best possible outcome for Overseas Territories’ goods as part of the UK’s future relationship with the EU.

The rights of British Overseas Territory Citizen passport holders will not change as a direct result of Brexit. This includes 90-day visa-free access to the Schengen area within the EU in any 180 days. British Citizen passport holders resident in the Overseas Territories will have no fewer rights to access the EU than British Citizen passport holders in the UK. The UK’s long-standing historical links and constitutional relationship with its Overseas Territories remain the same: Brexit in no way alters this.

What the St Helena Government is doing?

Since early this year the senior leadership of the St Helena Government has been assessing the possible risks - asking each directorate about possible impacts, for example, the Health Directorate on medical supply chains. In a similar way, Enterprise St Helena has reached out to our Island’s import and export businesses. SHG, including St Helena’s UK representative, have been in contact regularly with the FCO’s Brexit Team to ensure St Helena’s interests are fully understood.

What is the impact on St Helena?

The UK Government’s Department for Health & Social Care has put in place contingency plans regarding medicines



produced in Europe and exported to the UK under the UK’s temporary tariff regime, which will apply in a no deal scenario for a 12-month period. Medical devices, pharmaceuticals and most associated raw materials will have zero tariffs applied to them. This regime is very similar to current arrangements on tariff elimination and therefore no difficulties are anticipated for St Helena in accessing medicines. In addition, many medical products used on St Helena are sourced from outside of the EU, e.g. South Africa.

St Helena’s EU European Development Fund (EDF) funding for the undersea fibre optic cable is guaranteed by the UK Government; this means that if in the event EDF funds are no longer available the UK Government will provide funding to ensure St Helena is not impacted.

St Helena’s exports to the UK, for example, St Helena coffee, are unaffected. Exports to the EU will form part of the UK’s future relationship with the EU. Fortunately, at the present time St Helena sells very few products into the EU directly.

What you may need to do

You may have already seen that the St Helena Immigration Service is advising British Citizen passport holders travel-



The Governor’s Office
St Helena, Ascension Island and Tristan da Cunha

Brexit – The UK’s Departure From The EU: An Update From The Governor

ling to the EU to check whether their passports are valid.

Our notice below – which we will repeat over the next three weeks - gives details on how to do this. It also advertises the online tools the UK Government has available. While I appreciate that much of this information is specific to UK-based businesses and individuals, depending on circumstances this information may be helpful to St Helenian businesses and individuals too.

I hope this update is useful. Please get in touch with the Governor’s Office with any questions you might have.

Governor Dr Philip Rushbrook

Get ready for Brexit

Prepare for Brexit at gov.uk/brexit

Get ready for Brexit

The UK will leave the EU on 31 October 2019.

Answer a few questions to find out how you or your business should prepare. Go to: www.gov.uk/brexit.

British passports: check if you need to renew

You may need to renew your British passport earlier if you are travelling after Brexit

to most EU countries, Iceland, Liechtenstein, Norway and Switzerland. Go to: www.gov.uk/check-a-passport-for-travel-to-europe or the St Helena Immigration Service.

EU entry requirements for British Overseas Territory Citizen passports are unaffected.

Find out more about travelling to Europe after Brexit. Go to: www.gov.uk/visit-europe-brexit.

**Governor’s Office St Helena, Ascension Island and Tristan da Cunha
9 October 2019**



Goodwin Ltd

Vacancies for Construction Workers in the Falkland Islands

Goodwin Ltd has vacancies for experienced Carpenters and Groundworkers to work within its construction team.

Applicants for the Carpenter positions should have a proven track record in carpentry and joinery and be experienced in all other aspects of construction site work.

Applicants for the Groundworker positions must be experienced in marking out sites, foundation works (shuttering, reinforcing etc) blockwork, concrete pathways and floors and drainage works including site levels, excavation of trenches, manholes and the laying of foul and surface water drains.

A full driving license is essential as is the ability to work at heights and in confined spaces.

Applicants must also be physically fit and have a working knowledge of PPE and Health and Safety practices.

Salary will range from £24k to £30k for a 48hr week and is dependent on the applicant’s skills and previous experience.

For further information and a job description please email your CV to Glen Williams, Goodwin Manager manager@goodwin.co.fk

Closing date for applications is **Wednesday 23rd October 2019**.

WORLD MENTAL HEALTH DAY ON ST HELENA

10 OCTOBER 2019

World Mental Health Day is a day which is celebrated each year for global mental health education, awareness and advocacy against social stigma. Each 10 October supporters from all over the world come together to bring attention to mental illness and its major effects on peoples' lives worldwide. The effects of poor mental health impact St Helena and we hope that with greater awareness of what mental health both positive and negative is, stigma can be challenged and treatments that work to improve mental health can be offered.

World Mental Health Day was first celebrated in 1992 in more than 150 countries. Every year there is a focus on a particular topic while remembering everyone who experiences mental health difficulties. Research shows that many people will suffer from a mental health difficulty themselves or have someone in their family or community experience difficulties. Mental health difficulties are broad ranging, they include conditions such as depression, anxiety and schizophrenia which often onset in adulthood but also many conditions that we see right from childhood such as autism spectrum disorder and intellectual difficulty. Mental health difficulties come from a combination of brain related difficulties which result from genetics and brain injury and life experiences such as extreme stress, loss and trauma. More information on mental health difficulties can be found on the World Health Organisation website: <https://www.who.int/en/news-room/fact-sheets/detail/mental-disorders>

This year the emphasis of World Mental Health Day is on Mental Health Promotion and Suicide Prevention. Deliberate self-harm and suicide are important areas to know about and affect every country big and small. Across the world, a focus has been put on encouraging people to talk to one another in the community to help people feel more included and to encourage family members, neighbours and friends to seek help should they be feeling vulnerable or unwell. People on St Helena are very good at contacting the Mental Health Team when they have a concern, which is very positive and your help is needed to support this.

Here on St Helena, we have people with the full range of mental health difficulties living in our community. They are supported firstly by the community. Support and care comes from the Health Directorate, particularly the Mental Health Team, but also Education and Employment, Police and Children & Adults Social Care direc-

torates. We all have an important role to play on World Mental Health Day.

Talking about suicide
Sometimes the stresses and strains of life can feel overwhelming. If you are worried about someone you know there is lots you can do to support them.

How you can help:

1. Ask if they are thinking about suicide. It won't put the thought in their head if it wasn't there before, but it can be a big relief for them to be able to say, 'Yes, I am' and acknowledge they need help

2. Listen and show you care. Let the person talk about their feelings and listen carefully to what they have to say. Don't judge them, let them know you care

3. Encourage them to get help and support them to do so. Asking and listening are the first steps in developing a sense of hope. Now is the time to move forward with this hope and get help to keep the person safe. Encourage them to contact their doctor or the Mental Health Team

4. Right now. If the person has an immediate suicide plan and means to carry it out, do not leave them alone. Get help immediately by phoning 911

5. Tell someone. Never promise secrecy. Dealing with suicide can be difficult and you can't do it alone. Find someone to talk to about your own feelings.

(Information adapted from Breathing Space)

Keeping our ourselves healthy

Just as we can all do things to keep ourselves physically healthy, there are also lots of good habits we can use to help keep ourselves mentally healthy. Here are five things we can all do which are known to promote positive mental health:

1. Connect

Staying in touch with loved ones can make us feel happier and more secure and often just having a chat can help to lift our mood.

- Put five minutes aside to ask someone how they are
- Arrange to meet up with friends that you haven't seen in a while
- Join a local group or club and meet new people - check out Creative St. Helena on Facebook or email them via: creativesainthelena@gmail.com to find out what activities are available.

2. Be Active

Being active isn't just good for our physical health, it's also proven to have a posi-

tive effect on our mental health and well-being.

- Go for a short walk at lunchtime, instead of eating lunch at your desk
- Discover a physical activity you enjoy and one that suits you. Check out what's on at New Horizons to get ideas
- Challenge yourself to one of the Postbox Walks,
- Or a more gentle walk – pick up a leaflet at the Tourist Office to find routes.

3. Take Notice

Whether you're spending time with friends or taking a moment for yourself, try to stop to take notice and be aware of the present.

- Set aside time to practice mindfulness or take up yoga
- Take notice of how your friends or colleagues are feeling
- Spend time outdoors, enjoy the fresh air and notice what's around you.

4. Learn

Learning enhances your self-esteem and confidence and can be a great way to meet new people.

- Sign up for a class and learn something new. There are lots of courses available through the Community College covering a range of interests
- Rediscover an old interest or hobby, such as cooking or gardening
- Take on a new challenge to make or fix something

5. Give

Giving can be very rewarding – in fact those who report a greater interest in helping others are more likely to rate themselves as happy.

- Volunteer your time for a cause you are passionate about
- Spend time with someone who you know has been having a difficult time
- Commit a 'random act of kindness' daily – offer to make someone a cup of tea, pick up a piece of litter, offer someone a lift.

(Information adapted from SAMH and NEF Five ways to wellbeing)

Why not try to do at least one thing every day, or have a family challenge to see who can do something from each category by the end of the week.

St Helena Mental Health Team
10 October 2019





Scuba Diving Scholarships



St Helena Dive Club (SHDC), in conjunction with Dive Saint Helena, Sub-Tropic Adventures, and the St Helena National Trust, are again offering scholarships to enable more young people to become qualified scuba divers and enjoy our amazing under water world...

You Will Receive:

- 'PADI Open Water Diver Course' - delivered by the island's professional commercial operators; 'Dive Saint Helena' or 'Sub-Tropic Adventures'.
- 2-year SHDC membership and up to 20 club dives per year.
- 2-years of Divers Alert Network (DAN) dive insurance.
- Your own wetsuit, mask, fins and snorkel (which you can keep) and access to all other equipment required from the SHDC.
- **The whole package is worth over £1000!**
- Plus: Mentoring and support from SHDC members, and an opportunity to engage with the National Trust's marine conservation work.



Requirements:

- Open to all St Helena residents, aged 16-21 on 30/9/19 (under 16s may apply, but there may be additional requirements - please contact the Club for more details).
- A passion for, and some existing engagement/interest with the ocean.
- Make a £100 contribution to the purchase of wetsuit, etc. that will remain your property (assistance with payment possible - please contact SHDC).
- To play an active role within the club and go scuba diving!

Application and Selection:

Please submit an Application Form by 1st November, available from: shdiveclub@gmail.com or can be collected from St Helena National Trust at Broadway House, or from Mike Brown, Head of 6th Form, PAS. Short-listed applicants may be asked to attend an informal selection session at the Dive Club.

Applications are subject to the terms and conditions for the scholarship, details of which can be found in our Q & A documentation (supplied with the Application Form).

Some of the qualities we are looking for in our scholars are:

- Ability to swim
- Medical fitness
- Commitment in school and/or local community activities
- A passion for the ocean around St Helena



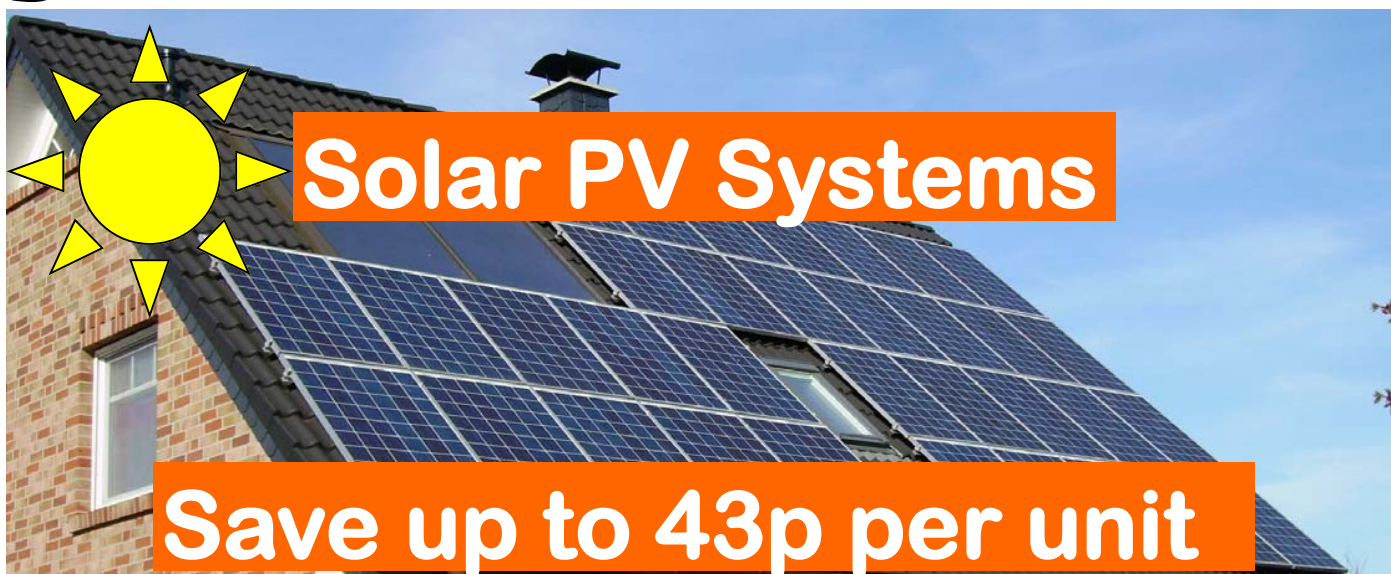


GREEN ISLAND ENERGY LIMITED

Tel: 25104 Mobile: 61720

karlthrower@greenislandlimited.com

save money on your electric bills!



Why invest and install a PV System?

Electricity from a PV system costs between 3-6p per unit without batteries and 6-10p with battery storage over the life of the system.

Long life span, PV panels are designed to provide electricity for over 25 years and the batteries are designed to last over 10 years.

Panels can be roof or ground mounted, systems available for most situations

Vast range of options: For example £2500 for a 2.7 kWp DIY System kit without batteries & £6300 with 5 kWh of batteries (generates 8-12 units per day)

As an example a 5kWp (+/-£5000) system will save you over £2500 a year.

**Cruise Ship
visits
October 2019**



MV Albatros - 14 October 2019

The MV Albatros is expected to arrive on Monday, 14 October at 0800hrs and depart at 1800hrs.

The vessel is travelling from Ascension Island and will continue it's onward journey to Walvis Bay with a capacity of 375 passengers and 339 crew. The majority of passengers are German and the crew are from the Philippines.

St Helena Tourism has been advised that there are no pre-booked tours for this cruise ship visit.

Currency on the day will be in Euro's.

Approval has been given by the Highway Authority to implement a one-way system in the Tomb area from 9:00am to 3:00pm to avoid traffic delays and congestion. Vehicular traffic travelling to Jamestown from the Longwood/Levelwood area, will have to use the following diversion route Hutts Gate - Halley's Mount - Dungeon—Gordons Post. Access will be granted to emergency vehicles only during this period.

St Helena Tourism would like to thank the public in advance for their cooperation.



MV Boudicca - 23 October 2019

The MV Boudicca is scheduled to arrive on Wednesday 23 October at 08:00hrs with a maximum passenger capacity of 820 and 329 crew. Estimated departure time is at 1800hrs. The vessel will continue it's onward journey to Walvis Bay.

Further updates regarding the MV Boudicca will be provided nearer the time.



For further information please contact: please contact Christina Plato, Tourism Officer on 22158 or email

christina.plato@tourism.co.sh



Head Office | ESH Business Park | Ladder Hill | Tel: +290 22920 | Email: info@esh.co.sh
Visit us online Business and Investment: www.investinsthelena.com | Tourism: www.sthelenatourism.com

PITCH TO PLANTATION

DO YOU HAVE A NEW AND INNOVATIVE BUSINESS IDEA?

Enterprise St Helena (ESH) in conjunction with the Governor's Office and Foreign and Commonwealth Office International Programme Fund are seeking expressions of interest from individuals with new and innovative business ideas.

The competition will be open to person's age 16 to 26 years that are permanently resident on the island.

The successful 'Pitch to Plantation' winner will receive £500.00, second place will receive £200.00 and third place will receive £100.00 in the form of vouchers.

The winner will automatically qualify for a start-up support package with ESH. (T&Cs apply)

Pitch to Plantation programme will kick start with a business development bootcamp on Monday 18th November 2019.

The Grand Finale will be held in January 2020.

Expression of interest should be submitted via an application form which can be e-mailed or collected from Mandy O'Bey at Enterprise St Helena.

Closing date for expressions of interest is by Thursday, 31st October 2019.

For Further information please contact Mandy O'Bey on 22920 or e-mail mandy.obey@esh.co.sh



Community Development Organisation

VACANCY: CDO OFFICER

Fixed Term: 2 year contract (opportunity to extend)

Salary: £10,000 per annum

We are seeking a passionate & community-minded individual to support and develop civil society on St Helena.

The St Helena Community Development Organisation (CDO) is a small voluntary group working to build a strong and resilient Civil Society through promoting and enhancing the sector on St Helena. Our services include financial and non-financial support to local civil society organisations.

In addition to enabling and advocating for civil society organisations, the St Helena Community Development Organisation Officer will be responsible for the day-to-day operations and administration of the organisation, and the Community Grant Scheme.

QUALIFICATIONS AND SKILLS

Essential

- Can demonstrate experience working in the field of community/social development in a paid or voluntary capacity
- Knowledge and experience of St Helena's Civil Society Organisations and key stakeholders
- Financial, project co-ordination, organisation and reporting skills/experience
- Excellent oral and written communication skills
- Exemplary interpersonal skills
- Advanced skills in Microsoft Office
- Highly organised, self-motivated and disciplined
- Positive, pro-active, creative and energetic

Desirable

- Experience of working under the direction of a committee
- Experience with policy and process development, and strategic planning

This is a full time position and normal hours of work are Monday to Friday, 8:30am – 4:00pm. However, consideration can be given to persons wishing to undertake this as a part time position (a minimum of 21 hours per week will be required with the relevant salary adjustment made). Please note, occasional evening and weekend work may be required. Having your own transportation would be advantageous.

The post-holder will be responsible to the CDO Management Committee.

For further information about the post please contact Shayla Ellick on telephone number 23787 after 5pm or email: community.sthelena@gmail.com

To apply please send your CV and cover letter addressed to the St Helena Community Development Organisation via e-mail to community.sthelena@gmail.com.

Closing date for applications is 16.00 Friday, 18 October 2019

VACANCY FOR SUPPORT WORKER, DEASONS SHELTERED ACCOMMODATION

The Children & Adult Social Care Directorate is seeking to recruit a caring and compassionate individual who is warm and friendly, with a strong work ethic and a genuine interest in supporting individuals who are no longer able to live at home. The post holder will provide assistance and direction to persons living within the Sheltered Accommodations, to enable them to live relatively independent but, with an oversight of support for their wellbeing.

Applicants should have the following qualifications and experience:

- Experience of working in a role that deals directly with members of the community or experience of caring for family members
- Basic Literacy and Numeracy skills and the ability to understand and follow policies and procedures
- Willing to engage in relevant training to enhance skills and knowledge in caring for individuals who are no longer able to live at home

Applicants would need to be willing to undertake and complete the NVQ Level 2 Health and Social Care qualification.

Salary for this post is £6,890 per annum depending on qualifications and experience.

For further details about the post, interested persons should contact Ms Gilly Brooks, Sheltered Accommodation Manager on telephone number 22713 or e-mail: gillian.brooks@sainthelena.gov.sh.

Application forms are available from Corporate Human Resources and on the SHG website at: www.sainthelena.gov.sh/vacancies, and should be submitted through Directors, where applicable, to Madonna Henry, Human Resources Officer, The Castle or e-mail madonna.henry@sainthelena.gov.sh by no later than 4pm on Tuesday, 15 October 2019.

All appointments are subject to the successful candidate providing satisfactory clearances, including a medical check and vetting/DBS clearance. SHG reserves the right to have information provided on the application form independently verified.

SHG positively accepts applications from all members of the community regardless of race, gender, disability, age, sexual orientation, religion or belief, and will consider all applications on the basis of merit, in accordance with the person specification. All disabled applicants meeting the minimum criteria listed in the job profile will be guaranteed an interview.

Children & Adult Social Care Directorate 30 September 2019



Has a Temporary Part-time Vacancy for an Assistant Care Worker

Supporting our full time Care worker three days per week (Monday s– Wednesdays)for the period, 21 October 2019 through to 8 January 2020, providing care and enrichment activities for our high dependent clients on the Carraressi Programme.

Duties include:

- To assist with travel needs which will include transporting/escorting clients to and from their home .
- To actively participate in the development of daily timetables of activities of clients to enhance their quality of life.
- To assist clients with all aspects of their personal care including toileting and hygiene whilst maintaining their dignity and privacy at all times.
- To adhere to SHAPE's Safeguarding Policy and Procedure for disabled and vulnerable people.
- Undertake any other duties as directed by the Manager

Job Requirements:-

- VETTING CERTIFICATE/DISCLOSURE AND BARRING SERVICE (DBS) CLEARANCE**
- Experience in Care Work - Desirable
- Qualification in NVQ Social Care Level 2 –Desirable
- Driving license Class A &C – Desirable
- Basic understanding of disability issues and willingness to assist people with a range of disabilities.

For a full job description and an application form please contact
Mrs Marianne Young-Crowie (SHAPE Manager)
on 24690
or email
SHAPE@helanta.co.sh

Please submit your application form to
Miss Danielle Anthony
(Finance & Administration Manager) via email
Finance_AdminManager_SHAPE@helanta.co.sh
by **7th October 2019 at 4pm**

We look forward to hearing from you!



VACANCIES SEA RESCUE SERVICES CREW

The Sea Rescue Services of the St Helena Police Directorate has an opportunity a self-motivated and enthusiastic individual to join their team as Sea Rescue Services Crew (Coxswain). This post will be a permanent contract.

The purpose of the post is to protect and save life at Sea, Some of the key tasks and responsibilities are:

1. Carry out directions from the Officer in Charge when at sea rescue incidents ensuring work is carried out within the standard operating procedures.
2. Support the wider Police Directorate through deployment when required within limitation of training given, as a Special Police Constable.
3. Under the direction of the Sea Rescue Service Deputy Manager, responsible for ensuring the maintenance and proper use of all Sea Rescue facilities, boats and equipment ensuring it is in a state of readiness at all times.
4. Make safety critical decisions during sea rescue operations and other deployments, ensuring the safety of the public, other agencies and the sea rescue crews.

Applicants should be 18 years of age or over and be a confident swimmer with the ability to pass a fitness test.

Prospective candidates should have:

- GCSE Math and English at Grade C or above or equivalent. If applicants do not have these qualifications they will be required to successfully pass a Functional Skills assessment in English and/or Maths.
- First Aid Qualification – First Responder
- Valid and clean driving licence in Class A.
- Experience /Qualifications if the Maritime field.



Hours of work will be 35 per week and the successful applicant will be required to be on-call for emergencies and will be required some weekends as per an on-call and Aircraft cover rota. Salary for the post is at Grade C commencing at £9,053 per annum.

For further details regarding the full role and a copy of the job profile, interested persons can contact Mr Simon Wade, Sea Rescue Manager on telephone number 25052 or e-mail simonwade@helanta.co.sh or Mr Craig Scipio, Deputy Sea Rescue Manager Tel 25215, email: craigscipio@helanta.co.sh. Deputy Sea Rescue Manager Leeroy Caswell Tel 25215, Email: leeroy.caswell@helanta.co.sh Applications should be completed and submitted, through Directors, where applicable, to Anya Richards, Human Resources Officer at Coleman House, Police HQ, Jamestown (or email anya.richards@sainthelena.gov.sh) by no later than 16.00 on Wed 16th Oct 2019.

All appointments are subject to the successful candidate providing satisfactory clearances, including a medical check and vetting/DBS clearance. SHG reserves the right to have information provided on the application form independently verified. SHG positively accepts applications from all members of the community regardless of race, gender, disability, age, sexual orientation, religion or belief, and will consider all applications on the basis of merit, in accordance with the person specification. All disabled applicants meeting the minimum criteria listed in the job profile will be guaranteed an interview.

David Lynch
Chief of Police



Agriculture and Natural Resources
Division

Farmers Masterclass No.1

Growing Healthy Potatoes

Tuesday 22 October 9.30am-12.30pm

at the Harpers Agriculture Centre, PAS

ANRD is running the first in a series of free Masterclasses for farmers, the first one on how to grow healthy potatoes. It will cover topics including: crop rotation, seed storage, pest, disease & weed control and field craft. Lunch is provided.

Places are open to all, but must be booked in advance by telephoning the Farmers Support Office at Scotland on: 24724

or email to edward.whitton@sainthelena.gov.sh

Places are limited. Please book by 4pm Friday 18 October.



Units available at the ESH Business Park, Ladder Hill

Enterprise St Helena (ESH) have units available for rent to local entrepreneurs for non-industrial / clean business at ESH Business Park, Ladder Hill.

Applications should be submitted to Robyn Franconi, Finance Manager, in the form of an extended business brief detailing your planned business and intended opening hours with a 3 year cash flow via email robyn.franconi@esh.co.sh or in hard copy to the Enterprise St Helena Office, ESH Business Park by no later than 1200 hours (GMT) on Monday 28th October 2019.

Terms and Conditions apply.

For further information please contact Michielle Yon, Director of Resources on telephone 22920 or email on michielle.yon@esh.co.sh



St Helena Island
Secret of the South Atlantic

Head Office | ESH Business Park | Ladder Hill | Tel: +290 22920 | Email: info@esh.co.sh
Visit us online Business and Investment: www.investinsthelena.com | Tourism: www.sthelenatourism.com

VACANCY – MARINE CONSERVATION ASSISTANT

The Environment and Natural Resources and Planning Directorate (ENRP) has a vacancy for a full time Marine Conservation Assistant within the Marine Conservation Section. The team are responsible for the protection of St Helena's marine environment and delivery of St Helena's Marine Management Plan in order to maintain its Category VI Sustainable use Marine Protected Area.

The successful candidate will be required to undertake a variety of fieldwork, laboratory work and office work, helping to deliver scientific research and monitoring, both locally and with international project partners. The successful candidate must be able to demonstrate good written English, basic mathematic skills and have some understanding of and interest in working in the marine environment. They should be comfortable working at sea, and recognise that this role can be physically strenuous, and may sometimes include long working days and unusual hours. SCUBA certification would be beneficial, but is not essential.

Salary for the post is at £8,613 per annum.

For further details regarding this post, interested persons should contact Rhys Hobbs, Marine Conservation Officer on e-mail rhys.hobbs@sainthelena.gov.sh or Karen Thomas on telephone number 22270.

Application forms and a copy of the job profile are available from Essex House/Scotland and should be submitted to the Human Resources Manager, ENRP, or e-mail karen-thomas@sainthelena.gov.sh by no later than **4pm Wednesday 23rd October 2019**.

Potential interviews for shortlisted candidates will take place on Thursday 31st October 2019.

All appointments are subject to the successful candidate providing satisfactory clearances, including a medical declaration and vetting/DBS clearance. SHG reserves the right to have information provided on the application form independently verified.

SHG positively accepts applications from all members of the community regardless of race, gender, disability, age, sexual orientation, religion or belief, and will consider all applications on the basis of merit, in accordance with the person specification. All disabled applicants meeting the minimum criteria listed in the job profile will be guaranteed an interview.

Darren Duncan

Acting Director of Environment, Natural Resources and Planning

7 October 2019



**Solomon & Company (St Helena) Plc
has a vacancy for a**

Grocery Sales Assistant

Within the Half Tree Hollow Supermarket

Job Outline

To provide a high standard of customer service and to assist with the day-to-day running of the shop.

Interested Persons Should:

- Have excellent Customer Service skills
- Be competent in Maths, English & IT
- Have some knowledge & experience in Food Handling
- Have some experience in Cash Handling

Salary for the post will be **£605.05** per month (£7,260.60 per annum)

For further information,
including the Company's
attractive benefits package,

please contact
Marilyn Joshua,
Grocery Manager
(Country Outlets)

on telephone number: 23559
or via email address:
hth-manager@solomons.co.sh

Application forms may be collected
from Solomons Reception Desk, in the
Main Office Building, Jamestown or
alternatively an electronic copy can
be requested via e-mail address:
hadmin@solomons.co.sh and should
be completed and returned to Anya
Thomas, Human Resources
Development Officer,
Solomons Office, Jamestown,
by **18 October 2019**.

VACANCY FOR TEMPORARY ACCOUNTS CLERK- HEALTH DIRECTORATE

The Health Directorate has a vacancy for a Temporary Accounts Clerk to assist with the day to day running off the Accounts Section.

Duties will include assisting with the preparation of the Directorate's payroll, ensuring data for submission to SHG Central Payroll Section is accurate and to deal with any associated queries,

Responsibility for ensuring that supplier invoice returns are accurate and the associated processes are carried out in accordance with financial procedures,

Responsibility for ensuring that all billing information for the Directorate is promptly captured and accurate Customer Invoice returns are generated,

Preparing pay sheets, local bank payments and journal vouchers as necessary and requisitions for consumables- (eg- fuel, stores, maintenance jobs, etc) for relevant sectors of the Directorate,

Collating all billing information for the Directorate and preparing Customer Invoice returns,

The Clerk will also be responsible for carrying out cashier duties and for the Directorate's Stores.

Salary for the post is at Grade B commencing at £6722 per annum.



All appointees are subject to the successful candidate providing satisfactory clearances, including a medical check and vetting or DBS Disclosure and references. SHG reserves the right to have information provided on the application form independently verified.

SHG positively accepts applications from all members of the community regardless of race, gender, disability, age, sexual orientation, religion or belief, and will consider all applications on the basis of merit, in accordance with the person specification. All disabled applicants meeting the minimum criteria listed in the job profile will be guaranteed an interview.

For further information contact Miss Clarissa Osborne, Administration & Accounts Manager on telephone No 22500 or email clarissa.osborne@sainthelena.gov.sh

Application forms which are available from the Health Directorate should be completed and submitted to Mrs Brenda Thomas, Human Resources Officer, Health Directorate on telephone no 22500 or email brenda.thomas@sainthelena.gov.sh by Friday, 18 October 2019.

Kamar Tanyan (Dr)

Acting Director of Health 9 October 2019

VACANCY FOR HEAD OF INCLUSION

The Education & Employment Directorate has a vacancy for a Head of Inclusion. The successful applicant will be responsible to the Director of Education and Employment to lead the Inclusion Service to ensure that it contributes to the raising of attainment for all students served by the Education and Employment Directorate through inclusive education and to strategically lead the Inclusion Service to ensure that the Directorate achieves its strategic aims for pupils with identified special educational needs.

Applicants must have a degree in relevant subject areas e.g. Education, Psychology or Special Needs, an accredited qualification in Special Education Needs or willing to study towards gaining a relevant qualification, have a local or UK Qualified Teaching Status, at least three years recent experience of working in a teaching profession as well as some experience of working with children with special education needs.

Salary for the post is grade E starting at £14,138 per annum.



For further details regarding this post, interested persons should contact Mrs Wendy Benjamin, Director on telephone number 22607 or e-mail wendy.benjamin@sainthelena.gov.sh

Application forms which are available from Education & Employment Directorate and Corporate Human Resources should be completed and submitted, through Directors where applicable, to the Administration Officer at the Education Learning Centre or e-mail santana.fowler@sainthelena.gov.sh by no later than 4pm, on Wednesday, 23 October 2019

SHG positively accepts applications from all members of the community regardless of race, gender, disability, age, sexual orientation, religion or belief, and will consider all applications on the basis of merit, in accordance with the person specification. All disabled applicants meeting the minimum criteria listed in the job profile will be guaranteed an interview.

Mrs. Wendy Benjamin

Director of Education & Employment

10 October 2019

EXPRESSIONS OF INTEREST FOR PART-TIME INSTRUCTOR

The Education and Employment Directorate is seeking expressions of interest for a Part-time Instructor to work at SHAPE on a contractual basis.

The part-time instructor will be responsible to the Training Coordinator for the tuition of Adult Literacy, Numeracy and Life Skills to clients at SHAPE Sandy Bay.

Hours of work are approximately 14 hours per week at the rate of £6.19 per hour and will be paid on a weekly/monthly basis. The rate offered is subject to a review.

For further information please contact Mrs Cherilee Thomas-Johnson, Training Coordinator, St Helena Community College, at the Education Directorate on Telephone No. 22607 or email cherilee.johnson@sainthelena.gov.sh

A list of duties and application forms are available from the Education & Employment Directorate and Corporate Human Resources and should be completed and submitted, through Directors where applicable, to the Administration Officer at the Education Learning Centre or e-mail santana.fowler@sainthelena.gov.sh by no later than 4pm on Monday, 21 October 2019.

SHG positively accepts applications from all members of the community regardless of race, gender, disability, age, sexual orientation, religion or belief, and will consider all applications on the basis of merit, in accordance with the person specification. All disabled applicants meeting the minimum criteria listed in the job profile will be guaranteed an interview.

Mrs Wendy Benjamin

Director of Education, 10 October 2019



Connect
SAINT HELENA LTD

TIP OF THE WEEK

Wait until you
have more than a
handful of dirty
dishes before
running the sink.



FOR SALE BY TENDER

Solomon & Company (St Helena) Plc has for "sale by tender" the following vehicles.

VAUXHALL ASTRA

Formerly registered as 969

Damaged as a result of a road traffic accident and can only be used for spare parts.

VAUXHALL ASTRA

Formerly registered as 2266

Damaged as a result of a road traffic accident and can only be used for spare parts.

Offers should be made in writing to the Tender Board Secretary, clearly stating the registration number on the envelope and placed in the Company's Tender Box in their Main Office Foyer by no later than 4pm on Friday 18 October 2019.



Solomon & Company (St Helena) Plc has for sale by tender the following on an "as is, where is basis", with no warrantee given or guarantee implied.

MAZDA RUNNER MINI BUS

Formerly registered as vehicle number 2082

FORD SPECTRUM MINI BUS

Formerly registered as vehicle number 2081

FORD SPECTRUM MINI BUS

Formerly registered as vehicle number 2085 – certain mechanical parts are no longer fitted

USED SPECTRUM BUS PARTS

Seats, doors, bumper and some mechanical items

For further information, interested persons can contact Ian Gough, General Manager Services & Properties on telephone 22380 or email: GM-Services.Properties@solomons.co.sh or Dave Leo, Transport & Auto Shop Supervisor on telephone 22638 or email: solomons.autoshop@helanta.co.sh

Offers should be made in writing to the Tender Board Secretary, clearly stating what you are tendering for on the envelope and placed in the Company's Tender Box in their Main Office Foyer by no later than 4pm on Monday 21 October 2019.

09 October 2019



Orders for Seed Potatoes

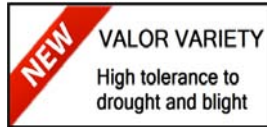
Thorpes

Thorpes are taking orders now to arrive on 11th November (V22)



25kg (aprox 400 tubers)

Contact Melanie Williams in Thorpe's Wholesale store on 22393 or wholesale@thorpes.sh



£33.95 per 25kg bag (generation 4)

£35.95 per 25kg bag (generation 3)

Options:

Varieties available this time: Fandango (Gen 3 or Gen 4) and Valor (Gen 4 only). Specification sheets available on request.



Thorpes

W.A.Thorpe & Sons Ltd.

Calling all customers
Order your Christmas TURKEYS now!



Closing date: 18th October 2019

Place your order with wholesale@thorpes.sh

Thorpe's Wholesale: 22393

or Tinkers: 22662



Thorpes

Catering supplies at Thorpe's Wholesale



Plastic Cups, Hot Cups, Soup & Plo Pots



Single & Double Compartment Takeaway Clams, Clear Lidded Cake & Salad Boxes



Paper Plates & Trays



Wrapped Straws & Plastic Cutlery 250's



Sandwich Bags, Clingfilm & Greaseproof Paper



Ketchup, Sugar, Salt & Pepper Sachets

Bulk discounts

Public: 8% for cash, 6% for credit
Traders: 17% Cash

Contact Thorpes Wholesale Store

Tel: 22393

Fax: 22189

Email: wholesale@thorpes.sh

Web: www.thorpes.sh



APPLICATIONS FOR DEVELOPMENT PERMISSION

NOTICE IS HEREBY GIVEN that an Application has been received in respect of the following proposals:

- 1. Application 2019/89:** FULL Planning Application for **Construction of Access Road for Haulage Purposes**, From Donkey Plain Quarry Site through Breakneck Valley on Parcels 0264 and 0371 New Ground and 1025 Half Tree Hollow. Applicant: Stephen McDaniel
- 2. Application 2019/90:** FULL Planning Application for **Permanent Siting of a 20ft Container for Storing of Household Items**, Nr Princes Lodge on Parcel 0384 Scotland, adjacent to the property of Mr Nigel George. Applicant: Adrian Mark Sim
- 3. Application 2019/91:** FULL Planning Application for **Extensions to Existing House to form a Bathroom, Utility Room and Storage and Enclosed Yard**, Church Lane, Jamestown on Parcel 050008 Jamestown, adjacent to Mantis Hotel. Applicant: Mark Caswell
- 4. Application 2019/92:** FULL Planning Application for **Construction of a Two Bedroom Dwelling**, New Ground on Parcel 0436 New Ground, adjacent to the property of Mr Raymond Henry. Applicant: Mario Anthony
- 5. Application 2019/93:** FULL Planning Application for **Construction of a Two Storey, Two Bedroom Dwelling**, Clay Gut on Parcel 1231 Half Tree Hollow, adjacent to the property of Mr Myron Benjamin. Applicant: Dave Stevens

Copy of the Applications and Plans may be inspected by prior appointment with the Planning Section, Essex House, Main Street, Jamestown, Monday to Friday, from 8.30am to 4pm. Appointments can be made with the Secretary on Telephone 22270 or email Karen.Isaac@sainthelena.gov.sh stating the Application Reference Number they wish to inspect.

Any person who wishes to make Representations on the above Applications should make them in writing within 14 days to the Planning Office, Essex House, Main Street, Jamestown or Email Karen.Isaac@sainthelena.gov.sh

Public Representation Closing Date:

4pm - 25th October 2019

**Shane Williams
Planning Officer**

Armchair Supporters View by Nick Stevens

Game week 8 was a disaster for the two Manchester clubs and Spurs. Liverpool march on as they are now 8 points clear at the top and even at this early stage are odds on favourites to pick up the Premier League trophy.

The early games on Saturday saw Tottenham Hotspur's bad week got worse as they loss 3-0 away at Brighton. To concede 10 goals in a week is not good for a club of Spurs ability. Hugo Lloris gifted Brighton the lead and then suffered a bad arm injury which could see him miss the rest of 2019.

Pochettino is now a manager under pressure. Questions are now being asked if he really want to be at Spurs. Poch went from the most sort after manager to now a man lacking leadership qualities at a club who have excelled in the past few seasons.

If Pochettino is under pressure then spare a thought for our manager Ole Gunnar Solskjaer. After losing 1-0 to Newcastle, Man U has just 9 points from 8 games, the lowest points total for this stage of the season since 1989/1990. United last away win in the league was in February against Crystal Palace.

The worrying thing for us the fans is there is no immediate sign where goals are going to come from consistently. A loss in our next match against Liverpool could see us in the relegation zone.

Most fans like Ole because of what he have achieved for United as a player and would want him to be given a chance. I too wish for him to have a chance; I am just worried when I hear his comments; praising terrible performances and finding positives when there is clearly none. This type of management could get us in serious relegation trouble.

Steve Bruce made a number of changes to his side that loss 5-0 at Leicester and was rewarded by the performance that his players put in. Matty Longstaff the younger brother of Sean Longstaff made his debut and scored a brilliant winner from all of 25 yards.

This was Steve Bruce's first win as a manager against Manchester United in 20 years of trying.



Man of the Match Matty Longstaff

The other Manchester club also had a major setback in their bid to retain the EPL title as they loss at home 2-0 to Wolves. Adama Traore scored twice in the last 10 minutes to give Wolves their first away win over City since 1979. Traore not only scored the goals but his defensive work nullified Raheem Sterling.

This is only the second time in 45 matches that City has managed not to score a goal. Having dropped just 3 points at home last season, City has now dropped 5 points in their opening 4 home games.



Traore netted a brace against Man City having scored only once in his previous 39 matches.

Liverpool fans would have being extremely pleased to see their main rivals drop points especially as they had come through a hard fought game the day before against Leicester. Leicester equalised Mane opener with 10 minutes to go and the Foxes looked on course to earn a deserved point only for a defensive mistake which gifted Liverpool an injury time penalty.

Two weeks in a row Liverpool has received gifts that enable them to pick up maximum points.

Liverpool now have a comfortable margin of 8 points at the top of the table and are certainly on course to secure their first ever Premier League win. Liverpool will no doubt drop points in the next 30 matches but so will City.



Match winner James Milner

Everton's loss at Burnley and Newcastle's win against Manchester United meant the Merseyside club is now in the bottom 3.

In the clash of the new boys, Norwich was crush 5-1 at home by Aston Villa and is now in the relegation zone.

Watford remains bottom as they drew with Sheffield United 0-0.

In the late match on Saturday Crystal Palace's Andre Ayew scored the winner in the 87th minute in their 2-1 result against West Ham.

On Sunday, David Luiz's early goal for Arsenal earns them a 1-0 victory over Bournemouth. This result moves Arsenal to 3rd in the table just a point behind Man City and 9 behind Liverpool.

Chelsea's youngsters continue to do the business for boss Frank Lampard as they beat Southampton 4-1 at St Mary's. Tammy Abrahams gave Chelsea the lead and has now scored 9 goals in total this season.

Armchair Supporters View by Nick Stevens



David Luiz scoring Arsenal's winner

Due to Euro Qualifiers and international friendlies there won't be any Premier League matches this coming weekend. The Premier League returns on the 19th October. The match of the weekend will take place on Sunday 20th when Manchester United host the league leaders Liverpool.

What's happening at New Horizons?

Last month's 50/50 raffle prize of £93 was won by Ms Joan Coleman of Alarm Forest. New Horizons wishes to thank all those who took part in this bi-monthly fund raiser. The next round of tickets will go on sale on the 18th November with the draw taking place on Wednesday 18th December.

We are currently accepting donations for our Christmas Bazaar which will take place on Saturday 7th December. Everything on sale will be for a £1 or less.

We have been doing 'Kids get fit' every Monday from 4.30pm for the past month. This has proven successful with children as young as 4 year's old coming along. This session is open to children from of all ages.

Junior Football

Young Rebels 2 v Jungle Rangers 3
G/S Young Rebels: Jet lee Yon 2
G/S Jungle Rangers Blaze Baldwin 2 & Toure Osborne 1
POM: Jet Lee Yon & Blaze Baldwin

Galacticos 8 v Titans 0
G/S Galacticos: Musa 1; Aiden Yon-Stevens 2, Evan Constantine 1 Rhys Yon 2, Ethan Harris 1, Mitchell Lawrence 1 & Kyron Anthony 1
POM Aiden Yon-Stevens

Fixtures:

Sunday 13th October
9.15am: Jungle Rangers v Yellow Devils
9.15am: Glacticos v Titans

SHFA Fixtures:

Saturday 12th Postpone Game: Rovers v Saints at 2pm

Sunday 13th District Fixtures:
1.30 St Paul's v HTH
Organisers: Longwood
3.30 Jamestown v Longwood
Organisers: HTH



2ND WRITING WORKSHOP

October meeting Thursday 17th
at 6 -7.15pm at The Consulate hotel.

- Improve writing skills using your imagination, experiences and ideas with guidance, support and encouragement.
- Flash fiction (Mini stories)
- No experience or GCSEs necessary – just a love of stories and willingness to give it a go!
- £1 donation



THERE IS NO
WRONG OR RIGHT
JUST WRITE

Further details: creativesainthelena@gmail.com.

FB: Creative Saint Helena.



23988

Writer's Workshop

JOB VACANCY THORPE'S JAMESTOWN SHOPS



Storeman

PART TIME / FULL TIME

This role involves picking orders.

- Free home to duty transport
- Attractive leave and sick leave package
- Salary to start at £3.20 per hour (£492.80 per month)
- Salary to increase considerably with proficiency in the job role and further increases with time spent in the company.
- Opportunity to progress to higher position at a higher pay rate

Contact: Henry Thorpe or Carol Yon Tel: 22781, email: admin@thorpes.sh or come and see us in our office above Thorpe's grocery shop

JAMESTOWN COMMUNITY CENTRE
SKITTLES SEASON – 2019
RESULTS

7th October:

| | RUSTY PISTOLS - 528 | Bt | STRUGGLERS - 494 | |
|---------------|---------------------|----|------------------|----|
| Ladies H. Sc: | | | Mavis O'Bey | 57 |
| Gents H. Sc: | Pedro Young | 69 | Fabian Peters | 68 |
| Ladies H. Sp. | | 61 | May O'Bey | 14 |
| Gents H. Sp: | Pedro Young | 14 | Fabian Peters | 14 |
| | Adrian Phillips | 14 | | |

Upcoming Fixture:

Monday 14th October: Rusty Pistols v Parttimers (Knock Out Semi Final)

FINAL LEAGUE TABLES AND LEADING STATISTICS

League Tables

| | P | W | T | L | Pt | P/F |
|---------------|----|----|---|----|----|------|
| Parttimers | 12 | 11 | 0 | 1 | 22 | 5876 |
| Extractors | 12 | 7 | 1 | 4 | 15 | 5876 |
| Guys & Dolls | 12 | 5 | 1 | 6 | 11 | 5639 |
| Rusty Pistols | 12 | 4 | 0 | 8 | 8 | 5533 |
| Strugglers | 12 | 2 | 0 | 10 | 4 | 5531 |

Best Individual Performances

| | LADIES | GENTS |
|-------------|--|--|
| Best Ave: | Sally Hickling, Strugglers – 55.5833 | Gavin Ellick, Parttimers – 61.8333 |
| Highest Sc: | Pat Essex, Guys & Dolls – 66 Kedall Lawrence, Guys & Dolls - 66 | Deon Thomas, Extractors - 82 |
| Highest Sp: | Marilyn Joshua, Guys & Dolls - 17 | Neil Joshua, Guys & Dolls -18 Nigel Thomas, Parttimers - 18 |
| Most Sps: | Kedall Lawrence, Guys & Dolls – 5 | Deon Thomas, Extractors - 12 |

Note: Throw offs for Ladies Highest Score and Gents Highest Spare, will take place on Presentation Night.



GOLF REPORT FOR SUNDAY 6th of October 2019 – Par 3 competition.



On Sunday the 6th of October 2019 the club hosted a "Par 3" format competition. The competition was played over 18 par3 holes, and kicked off at 12h00. This competition was generously sponsored by Anne and Gerald George. A big thanks is going out to Gerald and Anne.

We had 16 members that entered and although the weather was not the best, some good scores were achieved. Second place went to Larry Legg with a net score of 57. The winners was Mrs Anne George with a net score of 54. The internal two ball competition went to Eric Constantine and Paddo Johnson. Well done to all the winners.

Next Sunday the 13rd of October the club is hosting a normal stroke play competition, set to start at 12h00, this will act as the last official competition before the start of the annual Open championship competition.

Any interested person who would like to join this competition, or join the golf club, are welcome to make contact with us at the club on Wednesday afternoons or on our weekly competition on Sundays, alternatively leave a message on 24421, or drop a message to our Facebook page @SHGC.org.sh. We welcome any new members to our club.

Contributed by:
Acting games manager.

Gibraltar continues to play an important role in environmental protection among the Overseas Territories and Crown Dependencies, with John Cortes being co-Chair of the UK Overseas Territories' Environment Ministers' Council.

Minister Cortes said: "I was so sorry not to be able to be there in Alderney with the team. But the important thing is the mission that we are spearheading, that islands and other small territories surrounded by sea become an example to larger states when it comes to protecting our oceans. Closer contact between islands and island communities are valuable, as is exchange of experiences and expertise in all matters, and in this context, on environmental matters."



Blue Islands Charter Is Signed In Alderney

The Blue Islands Charter, an agreement that forces Governments to protect the seas around them and commit to environmental protection on land and sea, was recently signed in Alderney.

An idea that originated in Gibraltar as the brainchild of Minister for Environment, John Cortes, has started its journey around small islands around the world at the Channel Island of Alderney.

Islands and other small territories largely surrounded by sea are important for the protection of the oceans, and these are particularly susceptible to sea level rise due to Climate Change. Recognising this importance, the Blue Islands Charter commits the governments of these islands, be they independent states, overseas territories, or parts of larger countries, to protect the seas around them and commit to environmental protection on land and sea.

Minister John Cortes was due to attend the 'Wilder Islands' conference on environmental protection on small islands in Alderney to launch the Charter, but was unable to do so following the calling of the Gibraltar General Election. The Minister however signed the Charter on behalf of Gibraltar in advance and Dr Liesl Mesilio, CEO of the Department of the Environment and Climate Change, took the document over to the Channel Island where it was signed by other islands present at a ceremony on Saturday. Dr Keith Bensusan of GONHS was also present at the Conference, as was long-time friend Dr Gibraltar Mike Pienkowski of the UK Overseas Territories' Conservation Forum. Both Dr Mesilio and Dr Bensusan delivered presentations at the Conference. The States of Alderney issued a press statement on the occasion. The event attracted media attention in the UK, and Dr Mesilio was interviewed by the Daily Telegraph on the subject. Gibraltar, Alderney, Guernsey, Jersey, Sark, Montserrat and Tristan da Cunha have signed, and the Charter will make its way to other events and collect signatures, before returning to Gibraltar for a Blue Islands Summit to be held here in the future.

HARVEST FESTIVAL THANKSGIVING SERVICE

St. Mary's Church on Sunday 6th October was decorated with fresh fruit and vegetables to celebrate Harvest Festival Thanksgiving Service. Our attendance was of 35 adults and 15 children. The hymns were well-known (Someone brought a loaf of bread, Push little Seed, We eat the plants that grow, We plough the fields and scatter and Now the green blade rises) which were accompanied by our new Church Musicians:- Donald, Ruth, Iain, Ryall, Cohen, Damon, Zayla, Jordan, Aisja and Molly all did themselves proud with their talent. This isn't the last you will see/hear them because they are about to practice for our Christingle Service on 1st December.



Friends of
st. Mary's
ASCENSION ISLAND

The service commenced with the song "Someone brought a loaf of bread" to the tune of "Lulu Skip to my Lu". Rory, Alaiyah, Jamal, Rosie and Rhiann were chosen to carry items related to the song. So.....a braided French Loaf, jar of Jam, bowl of vegetable and a bowl of fruit were all placed on the Harvest Table followed by the Congregation who brought their dry foods which has now been packed and in readiness to be shipped to St. Helena for those less fortunate than ourselves.



On a tiny remote island of Ascension we cannot really get all the different vegetables and fruits like elsewhere in the world so I did a lot of ringing and e-mailing to various kind persons/organisations asking for a donation of something to decorate our church. I was very fortunate to end up with fresh local cucumber, lettuces, tomatoes, cabbage, swede and beetroot. The potatoes, carrots, onions and garlic I managed to get from my fridge saved the buying and scrounging. At 7 a.m. Sunday morning one might have seen me on the hillside picking wild cherry tomatoes to decorate the church window sills. This worked, along with bougainvillea and plastic food stuff borrowed from Two Boats School. The church looked a pretty picture all thanks to the following:-

Wolf Creek for the Braided French Loaf, Apples and Oranges ; Junior for the lettuce, beetroot, cabbage and swede; Colin of AIG Hydroponics for the large tomatoes; Mervyn for the fresh cucumber; Two Boats School for the plastic food stuff – looked good enough to eat!! And.....The Congregation who donated dry food stuff

**Your generosity is always greatly appreciated.
God Bless and enjoy the rest of the week
Cheryl**

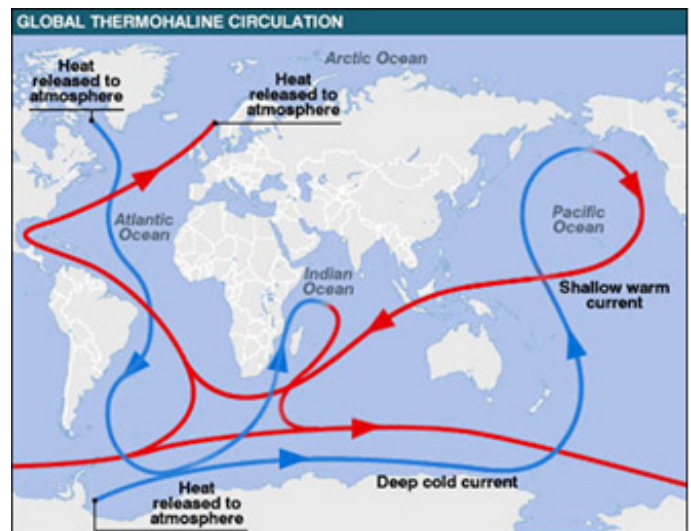
Frequent droughts for St Helena may be coming

Climate change scientists have recently completed a further study on changes in the world's ocean temperatures and have forecast the effect the changes may have for ocean currents, rainfall and weather systems. Any regular or permanent change in the global pattern of ocean or wind currents triggers a sequence of events which can change weather patterns across the world.

The study found the Indian Ocean has been warming due to climate change and the increased temperature is causing increased levels of rainfall in and around the Indian Ocean.

This change in the Indian Ocean causes stronger air currents from other parts of the world, including the Atlantic, to be drawn towards the Indian Ocean. This change in the global movement of air means there is less rainfall in the Atlantic Ocean. For thousands of years the pattern of ocean currents in the South Atlantic has linked with ocean currents in the North Atlantic and influenced weather systems as far as the Arctic Circle.

Less rainfall in the South Atlantic means the salt in the ocean water increases as less rain mixes with the saltwater. This in turn causes the ocean temperature to reduce faster as it flows northwards. Previous similar studies indicate these changes have been very gradually developing for the last 200 years. If the Pacific Ocean also warms up the established pattern of



South Atlantic Ocean currents also flow through to the Indian Ocean and beyond.

ocean currents in the South and North Atlantic Oceans will change further. The tropical rainbelt shifting southwards is expected to be one of the effects of ocean temperature changes. A movement of this kind in the tropical rainbelt is likely to bring more storms as well as more frequent periods of drought to St Helena.

Two years of flights from Jo'burg on Saturday

Saturday's arrival from Jo'burg will mark the 2nd Anniversary of scheduled flights to St Helena Airport which started on 14th October 2017.

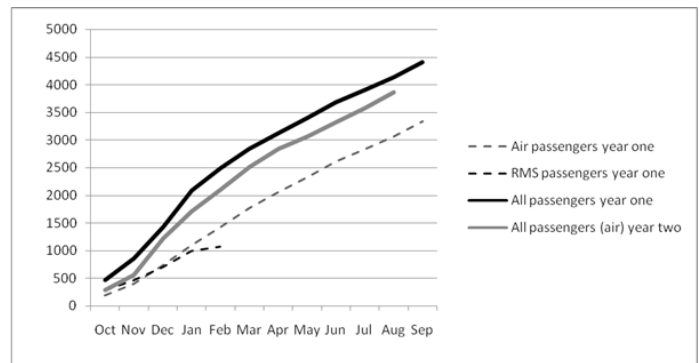
In the second year there have been a total of 104 flights making an average of two per week. If Saturdays flights arrives as scheduled there will have been 70 scheduled flights from Jo'burg, 14 charter flights to Ascension, 13 private flights, 5 medevac flights and 2 calibration flights.

There were two flight cancellations in the 2nd year of operation; one on 17th November 2018 which caused passengers to be 6 days late arriving and the other was on 5th March 2019 – causing passengers to be 4 days late arriving.

In the first year of scheduled flights 3,337 passengers arrived by air. Official statistics show 3,862 passengers arriving in the 2nd year but the arrivals for September still need to be added to the total. The numbers have not yet been received by the statistics office from the immigration office for inclusion in the 12 month total.

In the first year of regular flights the RMS was still in service for part of that time. The RMS brought 1,073 passengers to St Helena between October 2017 and February 2018 bringing the total for all arrivals to 4,140. When all the figures are available it is likely the total number of arrivals for the 2nd year will be about 300 less than for the first year.

Total arrivals at St Helena after two years of scheduled air service



Direct comparisons of air passenger numbers will not start until the end of year three. The last departure of the RMS was in February 2018. For five months of the first year of scheduled air services the RMS was also bringing in passengers.

The broken lines on the graph show separately the number of passengers arriving by ship and by plane in the first year of scheduled air services.

The darker line is the RMS passengers.

The thick darker line shows the combined arrivals totals for the first year of scheduled air services.

The official figures for passenger arrivals for October '18 to September '19 do not yet have available the monthly total for September.

presentation and progress report, referred to in the extract below, by commending the level and depth of work as very encouraging. Unfortunately, the SHG's electronic press release will have had limited reach throughout the community and therefore unable to maximise informing the public on the work already completed by the Property Division.

The concerns expressed at the public meeting were acknowledged, and I undertook to do what I can to provide wider public information on the progress that has been made by SHG on the provision of land plots and social housing. Therefore, I will encourage Mr Derek Pedley (Head of Property & Housing) and his team to do a Q&A programme on local radio and to consider giving a practical presentation at Harford Community Centre.

I would like to take this opportunity to publicly acknowledge the excellent work that is being carried out by the SHG Property & Housing Team. Momentum is expected as the work moves through the SHG processes and procedures with some urgency for successful outcomes.

Extract from the SHG e-mailed press release on 26 September 2019:

'The monthly meeting of the Environment & Natural Resources Committee (ENRC) took place on Thursday, 19 September 2019.

The Senior Design Draughtsman together with the Crown Estates Officer provided a progress report on plans to make available to the public, crown land for house building plots including some for new Government Landlord Housing. It was noted that the application for approval of homes to be built on the southwest Comprehensive Development Area at Bottom Woods has been submitted to the Planning Office. This proposal will make available 28 plots for house building and other associated works; to include the sale of plots for first time home builders, the sale of market value plots and some for the construction of Government Landlord Housing.'



THE CONSTITUENT C Leo (LegCo)

The serious lack of progress by SHG to provide social housing on St Helena has been an ongoing major concern for many years. Having served on the Environmental & Natural Resources Committee for the last two years, I know the hampering reasons behind the committee's inability to make progress with the delivery of social housing and I am also fully aware of the public's frustrations.

At a recent public meeting held at Harford Community Centre on improving local governance, there was strong criticism and frustration directed at SHG, yet again, on the serious lack of social homes.

The intense public frustration is justified.

Over the last 20 years very few Government Landlord Housing accommodations have been built and there are some 80 people on the Housing waiting list. In addition there is no SHG accommodation to accommodate our people in emergency situations. And to compound the public's frustrations with the current situation, for some time now £500,000 has been available to support the provision of new social homes.

Amidst the setbacks, pushbacks, hurdles and barriers, social housing has always remained high on the E&NR Committee's agenda, but progress has been painfully slow. However, over the last few months there has been clear evidence of creditable progress within the SHG Property Division with the process of identifying considerable plots of crown land for house building and the delivery of social homes.

It was most unfortunate that the public criticisms and frustrations voiced at the Harford Centre were also due to the lack of communication and information channels between SHG and the public.

Just a few days before the public meeting I summed up the

INVESTMENT PROSPECTUS LAUNCH

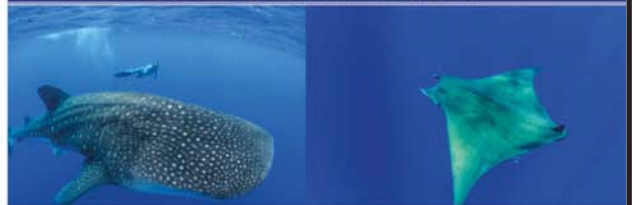
St Helena Government and Enterprise St Helena invites you to the official launch of the Investment Prospectus

Venue: Anne's Place
 Date: 19th October 2019
 Time: 16:00 - 18:00

Should you wish to have a copy of the Investment Prospectus to take away at the end of the event please bring a USB stick with you



MARINE ENVIRONMENT



HISTORY AND HERITAGE



CELEBRATING ONE YEAR OF ST HELENA AIRPORT LIMITED

On 5 October 2018, St Helena Airport Limited (SHAL) was granted an aerodrome certificate by the regulator Air Safety Support International (ASSI) to certify that it is able to ensure the safe and secure operation of the Airport. During its first year of operations, SHAL has supported an increasing number of aircraft and visitors to St Helena, and this is expected to continue into 2019/20.

Along with its aviation partners, SHAL remains committed to high levels of safety and security, safeguarding and caring for our environment, and enhancing customer experience and service by offering a personal touch to passenger travel.

Gwyneth Howell, Chief Executive Officer for SHAL said "The first year has been challenging for all, however with the dedication and commitment of our team, we have focused our energy on the road ahead, building a better and prosperous future for St Helena Airport Limited and the community whom we serve."

St Helena Airport Limited, 5 October 2019



ST HELENA AIRPORT

Two Ships to Christmas



Your Personal Cape Town Agent

Sourcing, Buying & Exporting

- Freight consolidation, large or small parcels
- Ex Vat Purchases
- Shopping Lists, collections & deliveries
- Online purchases
- Excess baggage shipment
- Break Bulk & Vehicle freight
- Building materials & Plant
- Vehicles and Vehicle Spares



All enquiries welcome

email sales@zedcore.co.za

Phone: +27 21 5317701

20 + Years of serving remote Island communities



SPRING HARVEST FESTIVAL



“SONGS OF PRAISE”



AT
ST. PAUL'S CATHEDRAL

5:30PM ON SUNDAY 13TH OCTOBER.

COME ALONG AND JOIN THE ST. PAUL'S
CATHEDRAL GOSPEL GROUP
WITH SOME GREAT GOSPEL SONGS!

WITH LIVE MUSIC BY
ST. PAUL'S CATHEDRAL GOSPEL GROUP

ALL ARE WELCOME.



Friday 25th October Moroccan Cuisine Night

Adults £18 Children 12yrs & Under ½ price

BOOKINGS ONLY CALL 23663/25507 OR
EMAIL rosies@helanta.co.sh

Menu

- Lamb Tagine
- Moroccan Roasted Chicken
- Moroccan Meat Balls
- Moroccan Spiced Fish
- Moroccan Lentil Stew
- Moroccan Pasta Salad
- Moroccan Styled Cous Cous
- Ginger Mashed Potatoes
- Moroccan Pilaf Rice
- Moroccan Mixed Veggies

Dessert:

- Moroccan Spiced Chocolate Cake
- Cheesecake



Save these Dates in your Calendar

Friday 11th October: In Keeping with Cancer Awareness Month A Wellness Presentation Evening by Martin Henry will commence at 7.30pm – Rosie's will be supporting the initiative with its Healthy Options Menu from 4pm along with its Normal Menu

Saturday 12th October: Car Boot Sale at Rosie's Car Park from 10am, Rosie's Restaurant will be open from 10am with a Light Breakfast Choice and a selection of Cakes with Tea and Coffee will be on Sale

Saturday 19th October: The Main event of the month the Pink Party in aid of Cancer Awareness will take place from 9pm – Entry Fee £1 donated to Cancer Awareness Support Group. Prepared to be dazzled by PINK, Ladies and Gents add Pink to your outfits and be entertained by the Pink Ladies and Gents of the Cancer Awareness Group and Rosie's Staff

Thursday 24th October: The BIG Pool Game: Current Champions of the St Helena Pool Wicked Wahoo will be taking on Rosie's at 7.30pm, come along and support your team

Friday 25th October: Moroccan Cuisine Night, Book your Table NOW to avoid Disappointment

Saturday 26th October: Kids GLOW Halloween Disco from 7pm to 9.30pm followed with a Disco for Adults. Family Meals Specials will be on Sale

Thursday 31st October: Special Halloween Karaoke Special with the 2 Ds from 8.30pm

Friday 1st November: Adults Halloween Dance Party, BIG PRIZES to be won for the BEST Halloween Costume the more Authentic the Better – more Details to Follow