

THE ST HELENA INDEPENDENT

Est. 2005

VOLUME XIII ISSUE 41, 14th SEPTEMBER 2018, PRICE £1

An independent newspaper in association with Saint FM and St Helena Online

Wind Shear a Non-Event and Low Cloud May Not Be as Bad Every Winter



New Prison Back in Land Planning



Impossible Pie ***Tammy Williams***



Dottie Come Home On The Plane - Review



ACCIDENT ON THE HAUL ROAD

On Sunday, 9 September 2018, St Helena Police received a report of a single vehicle road traffic collision on the Haul Road. Emergency services attended the scene and the incident is currently under investigation.

Drivers are reminded that the Haul Road is not a public road and is closed to all unauthorised vehicular traffic.



Wind Shear a non-event and low cloud may not be as bad every winter

Wind shear has never affected any flight into or out of St Helena Airport. If there are windy conditions on the day a flight is scheduled there may be some turbulence but that is a very different thing and happens anywhere at any time to any plane. The weather problem we do have now is low cloud. The Daily Mail and the rest of the world's press did not mention that one. DFID did not refer to it and the often mentioned Atkins Final Report of January 2005 makes just two general references to 'cloud'. However local knowledge of the unpredictable weather at Prosperous Bay Plain has caused the low mist rolling in from the south-east to be a subject of concern long before Basil Read set foot on St Helena when the future airport was discussed by the rest of us.

At the Saint FM studio on Wednesday low cloud was a major subject of discussion when the Airport Head of Operations, Contracts Manager and Weatherman visited the studio to talk about flight cancellations over the winter period. Ever since St Helena's wind shear hit the headlines across the world's media more equipment has been brought in and more work done to help understand and hopefully predict local wind patterns and behaviour. Now that low cloud is top of the agenda as far as threats to a reliable air service is concerned new work has started on that aspect of the weather. It is not just about being able to predict sooner and more accurately when low cloud is likely to be a danger it is also about having navigational equipment which will allow planes to land safely when there is a low cloud base. The Atkins Report refers to a minimum cloud height of 600 feet and 490 feet according to what type of navigation systems are in use; when the cloud or rolling mist is right on the runway there is no navigational equipment in existence which makes it safe to land.

It was also suggested the low cloud problem was especially bad this year because we have had so much rain. August rainfall this year at Bottom Woods was the highest recorded since records began in 1976. At 106mm, 2018 beat the previous 2007 record by 5.2mm. However the link between low cloud and rain may not be the full story. It has been known for mist to roll in from the ocean when there is a mixture of blue sky and some high white cloud. It was also mentioned there is only two years of weather data taken from the airport site. Ideally weather forecasts should be based on about forty years of data. In various ways there is still much to learn, collecting and using weather data from what is available is one of them.

The Saint FM discussion went into detail about how the weather data we do have is used. There are people in Johannesburg who also have a keen interest in St Helena's weekend weather. A close analysis of the weather starts the day before a flight is due. There is a computer model in use which is the usual one used by the UK Meteorological Office for forecasting. Data is added to the model on a regular basis. What the computer model will do is indicate what the weather is likely to be tomorrow based on the weather conditions prevailing today. Because there is not yet enough data available for the computer model to work with human assessments go hand in hand with the techno-prognostications. At about 4am on Saturday morning Gwyneth Howell, Head of Operations at



Tim Baker, the Weatherman (centre), explains about collecting weather data and how it is used

the airport is in contact with Johannesburg OR Tambo to give them the latest update on the weather. If there is any doubt about what the weather conditions will be like nine hours later as the plane approaches St Helena the flight crew and cabin staff are not signed on. As soon as the crew sign on the clock is ticking; it is already a bit tight getting to St Helena and back within the permitted working hours and a lengthy delay could take the permitted hours over the limit. When it is thought the weather conditions in St Helena are suitable the decision to go ahead with the flight is made. If extra time is taken to check whether an unfavourable weather front is slowing down or gathering speed the passengers for the flight know nothing about this; they check in at the usual scheduled time, there is no other way. If, eventually, the flight is cancelled then the public announcement is made. The passengers return to their hotels after retracing their steps through the airport. A story we have all become familiar with during this winter season.

Apart from checking closely what the cloud is doing, usually the cloud blowing in from the south-east, wind can be just as tricky as cloud, if not more so. Despite wind shear not being the problem that was first feared there are other wind behaviours which need to be considered and assessed on the basis of the plane landing safely. Wind shear was seen as consideration at the beginning of runway 20, crosswinds are a major consideration along the middle of the runway and tailwinds can affect the take-off time for planes leaving from runway 02.

All planes have their own particular characteristics according to how they have been designed. Some planes cannot cope with a tailwind of 15knots whereas the Embraer 190 can. With crosswinds the Embraer is capable of landing when the crosswind has a speed in the high thirties. On one occasion an Embraer landed when crosswinds were gusting to 40 knots. The only other plane mentioned during the radio interview which is suitable for St Helena is the Airbus 319.

The local weather conditions at St Helena are not the only conditions which need to be considered when deciding whether

Wind Shear a non-event and low cloud may not be as bad every winter

or not a plane should leave Johannesburg for St Helena.

OR Tambo airport has its own local conditions which need to be taken into account. The airport is 5,500 feet above sea level and ground temperature can rise above 30 degrees during seven months of the year. This means the air is thin (due to the height of the airport) and hot (due to the high ground temperature) this in turn means planes need more runway length to gain the engine thrust and speed for take-off. OR Tambo has one of the longest runways in the world at 4,400 metres to help get over the hot and thin air problem. In order to take-off safely the weight of the plane has restrictions either in the number of passengers or the amount of cargo, or both. Added to that is weight restrictions at St Helena due to the short runway and therefore short braking distance coupled with the need for a full fuel load at Windhoek in case the plane needs to be diverted to Ascension because of bad weather at Prosperous Bay Plain. A full fuel load means the number of passengers carried has to be limited.

From questions phoned in while the radio discussion was underway it became clear some listeners have very different priorities. It's not the cloud, nor the rain nor the wind. It's the airport restaurant. The current contract for running the restaurant has been handed back by the contractor. Will the restaurant continue? This was a question asked by some listeners. The answer is there are bidders for a new contract to take-over the running of the restaurant and negotiations are now in progress. Gwyneth Howell, Head of Operations commented that St Helena Airport is the most relaxed, friendly and informal airport she has been involved with. Apart from

the usual people who arrive with friends or family who are flying out or to meet people arriving, there are those who come along just to watch the comings and goings, see the plane land and give it cheer or just come for a cup of coffee and chat in different surroundings. Children are running about and most people are saying 'hello' to each other. It's a world away from the large, busy, impersonal and stressful airport.

Tim the Weatherman (centre) explains about collecting weather data and how it is used

Alan Shaw, Gwyneth Howell and Tim will be having a road show during October to discuss all the points which need to be considered when operating planes to and from St Helena. Alan said it is time to get out and explain the reasons why certain decisions about the air service have been made or not made and would like to see an information campaign on airport issues every three months or so.

The road show starts on Monday 1st October at the Jamestown Community Centre. In the afternoon there will be special showing for councillors and government officials followed by a public presentation starting at 6pm to 7:30pm. On Tuesday 2nd October the road show visits Kingshurst Community Centre starting at 6pm for one-and-a-half hours. Wednesday is for Sandy Bay and Blue Hill residents with a presentation at the Blue Hill Community Centre starting 6pm. Thursday means Longwood and the Harford Community Centre starting 6pm and then the road show finishes at Prince Andrew School on Friday with an afternoon presentation to students between 1:30 and 3pm.

Proposal to Create Whale Sanctuary Defeated

A proposal to create a whale sanctuary in the South Atlantic Ocean was defeated this week at a meeting in Brazil of the International Whaling Commission, or IWC.

Whales are mammals that live in the sea and some are among the largest animals ever to have lived.

The proposal received support from 39 countries but was opposed by 25. That was just a little less than the three-quarters majority needed for approval. Brazil first introduced the proposal in 2001. Japan and other nations argued that the sanctuary was not needed because countries are not currently doing commercial whaling in the South Atlantic.

Environmental groups and conservationists argued that the sanctuary would protect whales from being hunted, trapped in fishing gear or struck by ships.

Brazilian Environmental Minister Edson Duarte promised to fight for the proposal at future meetings. "It (is) so important for the conservation of whales around the world but especially in the South Atlantic," he said.

In addition to Japan, countries opposing the sanctuary included Iceland and Norway. They are pushing for the return of some sustainable whaling and are unlikely to change their vote unless their demand is met.

The commission banned commercial whaling in the 1980s. Japan is proposing to bring it back this year with catch limits. Japan has hunted whales for hundreds of years as a less costly

form of meat.

Daven Joseph is ambassador-at-large for Antigua and Barbuda, another nation which voted against the measure. He said the proposal has some value but "is failing year after year because there is a lack of respect for the views of everyone in this organization." Joseph said sustainable commercial whaling could provide an important food for developing island nations. And, some countries have a cultural and nutritional use for whale meat that should be respected.

Conservationists say commercial whaling has proved difficult to supervise in the past. They say it threatens whale populations. Some countries say there is simply no place for whaling in the modern world.

But Joseph predicted that progress on many conservation measures would be impossible without compromise.

Several native or ethnic groups also spoke Tuesday in support of their own subsistence hunting. Such hunting is permitted by commission rules. Catch limits for subsistence hunting are up for renewal this year.

"Since childhood, I have been trained to hunt," said Vladimir Piny, a native Chukchi whaling captain from northern Russia. "I cannot grow tomatoes or bananas. The Arctic would never allow me to do so."

Japan accuses the IWC of supporting anti-whaling nations rather than trying to reach a compromise.

The subject of commercial whaling has split the IWC for many years and neither side has appeared to be willing to compromise. The conference ends Friday, September 14.



Tel: [+290] 22327
Email: independent@helanta.co.sh
[http: www.saint.fm](http://www.saint.fm)

Editorial

It's all explained on the inside pages but I cannot resist mentioning here that wind shear has not been and is not expected to be a problem where airport operations are concerned. After all that fuss and the 'world's worst airport' tag it has come to pass that while wind shear can exist, the airport controllers can cope with it. Crosswinds are more of a problem than wind shear but, again, this can be coped with. Low cloud is the biggest problem and this aspect of the weather and its adverse affect on planes landing at St Helena has not been mentioned very much at all – until recently. Confucius, the Chinese philosopher who lived 500 years before Christ said "Life is really simple, but we insist on making it complicated"; in the past 2,500 years we have got so much better at adding to the complications.

Dr Angie Jackson-Morris responds to a letter from last week. I will not say anything other than read the letter, and, as the subject is health promotion and wellbeing it's maybe a good time to mention some of the points made by Public Health Director, Akeem Ali, when he made a keynote speech at the 25th Social Marketing Conference held at Clearwater Beach, Florida. Dr Angie's approach to health promotion may be just to make healthy choices available and after that it's up to you. But I find it too easy to take a more direct approach; especially when 70% of adults are overweight or obese, 50% of teenagers smoke, 30% of adults have hypertension and 20% have diabetes. The introduction for Akeem Ali at the wellbeing conference included, "Dr Ali and his team are tackling issues related to limited health resourcing, high prevalence of chronic but preventable long term conditions and entrenched lifestyle choices resulting in poor health among the population." That statement does stop me in my tracks and makes me think a bit more about the misery caused by persistent ailments suffered by so many people especially when many of them are avoidable. We all have to think hard about why we make excuses for damaging our health and, as a result, our quality of life. As the famous healthcare pioneer Florence Nightingale said, "I attribute my success to this: I never gave or took an excuse."

Continuing with Public Health we have a report this week on a new electronic patient record system which is due to be introduced either on 5th November or "by the end of the year". Which it is depends on whether you want to believe the company supplying the new system or the government press release. It's said to be a good quality, simple to use system which provides better information and analysis on patient care than anything that has gone before. Another main feature is all the patient care information is stored in one place and accessible from one source.

This brings into the debate the need for a Data Protection Act as a large body of highly personal and sensitive information is easily accessible from one source by a number of people across the field of healthcare. The new system will have many

benefits but Akeem Ali is clearly capable of starting up new initiatives much faster than our legislators. A Data Protection Act together with a Freedom of Information Act has been talked about by Exco, Legco and others for several years. In July a timetable was published saying a Data Protection Ordinance is due to come into effect in April 2020. That's far too late. The legislative process takes far too long. It's now getting to the stage when our legislators just cannot keep up with the legislation required as a range of things change and need our laws and regulations to adapt. The legislative process simply is not up to the job. At the start of this Legislative Council 24 Bills, 13 Regulations and amendments to the Constitution were listed as business the present Legislative Council needed to work through. There is still much to be done and as time passes the need for certain legislation becomes ever greater; data protection and freedom of information is without doubt in that category. Protection for private and family life and the privacy of home and other property is listed in the Constitution as a one of the Fundamental Rights and Freedoms of the Individual. The slow pace of our legislators brings into question whether they are upholding the constitutional right we all have to privacy over a wide range of personal information.

Lastly, the Planning Department has flown in the face of the longstanding tradition for openness in the planning process. Andy Pearce reports that many of the documents supporting or objecting to any particular planning application will no longer be available to the public. This is more than a retrograde step. The need for openness in planning is an established tradition in British governance. Keeping the 'evidence' secret will only succeed in breeding a culture of mistrust and suspicion in St Helena governance. Our own constitutional right to privacy is at risk while at the same time a government department shrouds itself yet further in a cloak of secrecy. A big shake-up is needed.

Vince

THE BIG SHAKE-UP

Impossible Pie

Tammy Williams

The mystery of the impossible pie is that it's dead easy to make, there is a mixture of eggs, margarine, flour, sugar, milk and coconut and a few flavourings thrown into a blender to make one mix, dropped into a pie dish and then pushed into the oven, the magic bit is when cooked, the crust is at the bottom, custard in the middle and the coconut on top, amazingly all in the right place.

I sometimes think of St Helena as an impossible pie situation, where everything is thrown into the mix, we say our prayers and hope to God it all turns out okay, for there is exactly where we are, in an impossible situation. Governments around the world use statistics to tell a story, more often, 'their' story, and the figures cannot lie, can they? Yet they lay cold, dead and miserably '*far from the maddening crowd*' The statistics say things are better, wages have improved, people are living longer, more money is coming into the economy and there are signs of economic growth, yet the community tells a different story. They are 'living' stories of a rather different truth, of a stinging, painful recession that offers a very different view of the rosy one we sometimes try to paint.

I always refer to my work in radio because it's there I find the greatest resource, on the day I spoke to Councillor Lawson Henry about whether the island was facing a crisis or not someone commented that we were rambling on about the airport and there were other things that were causing a crisis on the island, quite right but they were in part missing a critical piece of the jigsaw. We may say that we should not put all our eggs into one basket (or into the blender) but we did, didn't we? The airport is and will continue to receive the biggest focus because it was meant to be the catalyst for change, we had pinned our hopes of a growing economy on it, people invested, beds were brought, news cars for taxis services and coffee machines, new websites were launched, people prepared, yet the local hospitality sector has received one crushing defeat after another, met with a wall of silence.

A tapestry is being weaved, one of hold your nose when you jump, that way the water doesn't get in, my question is do we continue to promote the island on an international scale or do we first and foremost devise a rescue plan which sees all the agencies coming together to 'correct' what are serious matters for us as a destination? You will note I have omitted the word 'tourist' from destination because I sense as many are already doing that tourists will need some certainty for the money they are paying, can we give them this?

I also removed tourists from the equation because I know for a fact that we have a hard time giving returning Saints value for their money let alone tourists, tourists turned back on the last delay, including a French couple, and two South African couples.

What is our truth? I entered into a debate with a good friend this week about whether or not international promotion and travel shows were still something we could afford, we clearly stood on opposite sides of the fence, while I respect the concept I cannot agree with the timing, trying to promote St Helena



internationally in our current situation will not do us any favours and could possibly be seen as irresponsible. We have documented proof that from a traveller's point of view the island is not scoring brownie points, we cannot be so naïve as to ignore the red warning signs, that St Helena must now carry a warning on the package is our cross and we will have to bear it.

This is not a situation where we can toss everything into a blender and make a pie from it, no, we will have to; together, systematically come up with a solution. I know it terrifies the socks of us that the island is at risk of being ruined forever but how much worse for us if we are caught falsely advertising? All the glossy travel brochures in the world will not conceal our inefficiencies, our job now is to adequately educate and inform ALL travellers coming to the island, an ill-informed traveller is a grumpy traveller and this work should encompass Airlink whose communications are seriously lacking. Should we be as bold as to suggest that all international promotion be grounded until we are all practiced and prepared? Dare we impertinently insist that the local tourism/travel agencies in partnership with the government and private sector including the media have a 'Holdfast Tom' plan bringing together the thinkers, planners and doers to ensure excellence, much can be gained from the travellers themselves, let's not work in secret, let's not try and pretend this isn't happening, let's accept our reality and the truth.

As with all debates there are two sides to every story, there will be those who consider international promotion crucial for St Helena and it is, so what's the problem? The media world are re-known for asking the provocative questions, it is our job to challenge decisions and question actions, without cause there can be no effect. The challenge to all of us is whether what we are currently doing is effective or indeed enough? We should not be so blindsided that we miss the opportunities to do things better. Our branding is not just about the Whale sharks, fishing, history, dark skies and Napoleon which we all dearly love to promote but we are in part dealing with beauty and ravages, triumph and tragedy, success and failure.

As things stand there are no 'one pot' or 'all in the blender' options for St Helena, and sugar coating the facts could have damaging consequences for us but I also believe that ultimately we all want what's best for our island. Readiness means best preparedness so we can ill-afford to operate on an individualistic level without taking into consideration all that has gone on before and without having an all-inclusive forum where each of the agencies have sufficient platform to adequately influence decision making, the optimistic in me decides that we can, can't we?

Dottie Come Home On The Plane

Review by Fr. Jack Horner

I am more used to writing sermons than theatre reviews but there is a first time for everything and so I was pleased to accept the invitation from the shows producer, Ivy Ellick, OBE, to write a few thoughts.

Most reviews are from critics who are not shy to point out faults but it is difficult to be critical about this show. It had already visited several venues before my wife and I had the chance to see it at Guinea Grass Community Centre. Word must have got around that it would be a good nights entertainment as the hall was packed to capacity in spite of the wet and cold weather.

In true St. Helena style it started a few minutes late but any impatience was soon subdued with the appearance of Granny (Jack Thomas) all made up and really looking the part of an old fashioned St. Helena Granny. She continually complained of trouble with her waterworks in the most amusing way and frequently was aided to the toilet by the competent Peggy (Gilly Brooks). A task she would repeat several times in anticipation of the arrival of Dottie and family. She also tried the patience to near exhaustion of her son, Henry and daughter-in-law Maudie, brilliantly played by Anthony Hopkins and Debbie Knipe.

The comedy, with a very clever and funny script, portrayed much of St. Helenian culture, vocabulary and pronunciation with a good mixture of the old days and the modern times of today, all very well cast and executed. As I have been here nearly 20 years I was able to follow the dialects and the Island logic and humour but I could imagine most newcomers would have difficulty without an interpreter.

The backdrop scenery was quite basic but very effective and added a genuine touch with a different background depicted for each of the seven scenes. These were all introduced by Rodney Benjamin with his usual repertoire of jokes to amuse us while waiting for the next act.

One of the funniest scenes was 'Outside Jamestown Market' with three deceased working girls, Trazer (Ivy Ellick), Reenie (Winnie Thomas) and Lilly (Rosie Mittens), returning to sell fish under the watchful eye of Mama Lizzie (Emerald Newman). There were of course others who had performed similar roles in past history but perhaps we'll see more of them in a future production – if they are allowed down here.

A break mid way through the performance allowed some of



us older folk to do what Granny had been doing all evening although most of us, unlike Granny, left nothing behind on our seats. The interval also allowed us to get to the bar to refresh our tonsils and wits from laughing so much with a beer, a dram or two or even a soft drink.

Guitar, keyboard and harmonica artist skills accompanied a couple of musical interludes and even had the audience participating.

The second half brought in the rest of the cast with Dottie (Natalie Lawrence), having arrived at the Airport in sophisticated style with husband George (Nicholas Yon on special secondment from his duties in the Castle) and the children.

The event mirrored much of family arrivals on the Union Castle and RMS ships with the returning daughter swanking and pleased to show off the very latest fashions from the UK which would be the envy of all the many onlookers but not be available on St. Helena for some months or even years. (Looket dat one! Who she tink she is??)

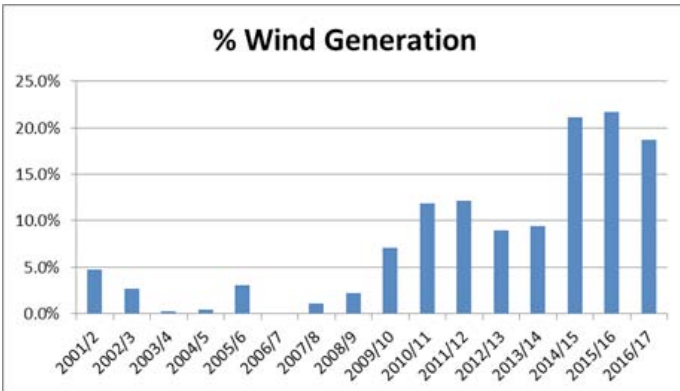
The remaining cast was played by Venus Williams as Jack, Marcella Mittens – Jill, Alaina Crowie as Sebastian and Jamie Grace-Lawrence was Lisa.

All in all, it was a thoroughly entertaining show played quite professionally by Amateur Dramatics - the best £3 worth on island.

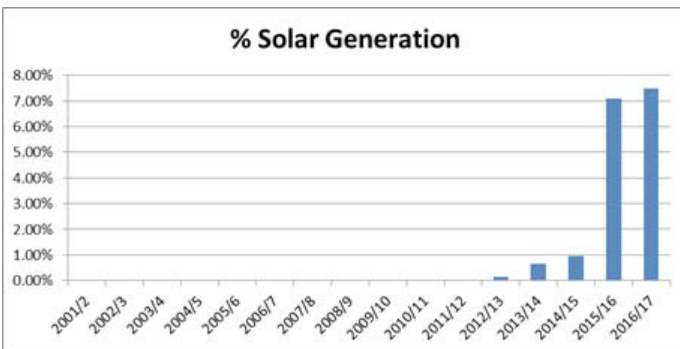


Solar power still producing despite all the rain

For a short time, after a very long time, there were twelve wind turbines spinning on Deadwood Plain. The highest number had been eleven as one mast and turbine was missing its blades. Now it's back to eleven as one turbine is down for maintenance.



Despite being one turbine short of a full set the electric power generated through wind power is higher than average. In August 24% of the islands electricity came from the wind turbines. Add to that the solar power from the Half Tree Hollow Rifle Range and the roofs of various buildings the total renewable energy generated in August reached 31%.



Health Committee want new Primary Healthcare Centre

The Public Health Committee is the only Council Committee to have met so far this month. At their meeting last week discussion centred on how a new Primary Healthcare Centre might be made possible. The main reason for a new healthcare centre is to have all, or at least most, non-specialised health services in one place. The site being looked at for the new centre is Sundale but it's early days; first the property has to be transferred from one government department to another and the decision of another council committee is needed before another half-step forward can be made.

A National Health Service for St Helena?

Another healthcare proposal still in the early stages is a national health insurance scheme for St Helena. Instead of getting a bill for the x-ray on your big toe or the medical attention received for a twisted knee or for surgery, all such medical services could be funded through a health insurance scheme. There are several different ways of making such a health scheme work. In the UK a weekly or monthly amount

is deducted from pay along with income tax. This method has always been popular as it means all health care is free at the point of use. Canada has a similar system except Canadian citizens have to apply for public health insurance, it's not automatic, and the insurance does not apply to all medical services.

Another proposal made at September's Public Health Committee meeting is for pensioners who depend on Basic Island Pension to be exempted from medical charges, or at least given financial support. There is a long way to go with this, if indeed anything does happen at the end of the discussions.

St Helena Island in path of Hurricane Florence

St Helena Island on the South Carolina coast is right in the path of Hurricane Florence. The monster, once in a lifetime storm has left the residents of the Gullah community quite unperturbed.

The Gullah are a self-contained community in the Low Country of South Carolina and neighbouring Georgia. They have preserved their own culture which includes their language as well as their cooking, spiritual influences, and crafts. The roots of their culture lie in West Africa; Angola, Sierra Leone and the countries around the Gulf of Guinea. The Gullah ancestors were slaves who fought in the Union Army during the Civil War. White farmers fled from the coastal areas of South Carolina and Georgia as the Union Army advanced. To cut a long story short, the Gullah settled on the vacant farmland and established their own community.

As Hurricane Florence advances the Gullah decide carefully what to do. They survived Hurricane Irma last year and several 'big ones' before that. One resident explained, "If Mama and Grandma are going, then a lot of people are leaving." If Grandma wants to stay, they all stay.

St Helena South Atlantic and St Helena South Carolina appear to have more in common than just the name. It's a different slave history but both communities have strong historical links with slavery. Maybe there should be stronger links between these two St Helenas.

THE ROCK

**YOU ARE INVITED TO JOIN US ON
SUNDAY 16th September 2018 @
11:00 FOR PRAISE AND WORSHIP
At No 3 Unit Longwood Enterprise
Park**

*Transport is available from
Jamestown. HTH
Contact 23249*

PRAISE & WORSHIP

Your Opinion Counts

Dear Editor,

Grateful if you can publish a brief response to address a concern raised in the 'Contributed' letter to The Independent last week that suggested that 'There is a rumour that retailers will be encouraged to import less biscuits, sweets and chocolates.'

I am happy to assure any readers who have heard such a 'rumour' or themselves believe this that the public health partnership with the island's merchants has no intention of any kind of restrictions on such products. Many readers will have noted that the current work with the merchants is entirely focused on bringing more of specific products *that provide customers with a choice of what to buy so they can choose healthier options*. For some years there have not been sufficient sugar-free drinks imported to provide people with a choice about the drinks they have as stocks have been limited in number and range and intermittent. So in this way we agree with the contributor, who went on to propose that people would 'like to take responsibility for making our own decisions thank you.'

The work with the Merchants is a part-

nership in that it serves a public benefit but also is fundamentally about supporting and assisting the merchants to strengthen the market for products they can make profit from, that people say they want *and* are better for the health of all of us. The concept is not to stop imports of things like full sugar Coke but to provide a choice, with alternatives actually on shop shelves for longer and in the flavours people want, and to empower people with better information so they know that alternatives like Coke Zero are greatly better for their health while still giving them a sweet cool drink they enjoy. When cost of living is an issue, the fact that a sugar-free drink now costs less than the sugary equivalent should also be a helpful way to help people afford to make a healthier choice.

The underlying principle of the work under the Health Promotion Strategic Framework is to enable healthier choices, addressing gaps and putting some practical things in place to make being healthy an easier option.

Sincerely

Dr Angie Jackson-Morris

Dear Editor,

Jamestown Traffic Management

First of all I must declare my interests, I am a permanent resident on St Helena and I also operate a transport business. As I look around Jamestown I can see we have a real problem with parking and helping people to get their shopping and other tasks done reasonably efficiently. I would think that all drivers have driven

to town and then realised that finding a parking space was not going to be easy. This can happen every day, Monday to Saturday. Sundays seem fine.

I note the provision of dedicated disabled persons parking and taxi parking. What I would like to know is how effective this has been and how it is being monitored. Perhaps SHG can publish some basic statistics.

During the working week what is the take up of disabled parking? Have patterns been found that would help get this provision done in the most helpful manner. Are there too few bays, or too many, are they in the right places?

During the working week what is the usage of taxi bays? I am aware that some effort has been made to ensure that drivers only use them when the vehicles are manned and ready for hire. Once again, are there too few bays, or too many, are they in the right places? A further concern for me is the number of workers, quite a few from SHG, who drive to town, park up for free and then vacate the space at the end of the working day. Surely SHG can come up with a better system of providing parking places that would be available for tourists and those doing their shopping etc. I am well aware I did not have to put this in the newspapers but could have sent it directly to the Chief Secretary and that I would have had a prompt reply. However, this is one of those matters that seem to annoy a lot of visitors to Jamestown, and also its residents. It would be useful to have the response in the public domain.

Roy Williams

THANK YOU FROM ST PAUL'S PARISH

Our grateful thanks are extended to everyone who supported and contributed to the success of the Coffee Morning, held on 21st August at Guinea Grass Hall, in aid of St Martin's Church and Parish Fund. Takings on the day, together with late donations received, totalled to the grand sum of £360.32.

A very big 'Thank You' to all those who 'braved the elements' of the morning and supported the event with their presence and their buying. Thanks also to the Helpers and those who generously gave donations both in cash and/or kind.

Thank You and God Bless.

EMPLOYMENT OPPORTUNITY

Full Time Chef

The Blue Lantern seeks to employ a Full Time Chef to join their Hard working & Enthusiastic team. Interested persons can contact Craig or Dustin at the Blue Lantern. Email your CV with contactable references to: bluelantern@helanta.co.sh or contact #25555



UK Parliament back from summer recess – Overseas Territories overlooked

The House of Commons and House of Lords returned to the debating chambers and committee rooms last week but Monday was a day off and Friday too. The first week must be a sort of training session to get the muscles around the mouth and in the tongue back in proper working order. Next week MPs will have their facial muscles fully occupied for an extra day, from Monday to Thursday, before deserting the Palace of Westminster once more in preparation for what is known as the Conference Season. This is when all the political parties have their festivals of self-righteousness and grabbing the lime-light. At all of these conferences every speaker hopes that something they say will make headline news and set social media trending in their direction. Then everyone gets back to the Houses of Parliament on 9th October where it all starts again with another three day week.

Last week and this there is not much among all the debates and committee sessions which directly concern the British Overseas Territories. One or two questions have been asked of ministers, mainly on environmental issues. The Department of Environment, Food and Rural Affairs were asked to say what is happening to make sure funding for environmental projects continues after Britain leaves the European Union. The minister mentioned the Darwin Plus programme which this year has £2.5 million available for Overseas Territories and the £4.77 million already available from the Conflict, Stability and Security Fund allocated for a four year programme covering all Overseas Territories. Despite the minister opening the reply to this question with, "We are considering how environmental funding for the UK Overseas Territories can best be provided after we leave the EU" there is no indication they have given much thought to it so far. This completely fits the recent criticism from a former Governor of the Bank of England who said Brexit negotiations lacked preparation and showed incompetence.

Earlier this week The UK Independent newspaper picked up on the unpreparedness of the UK Government in taking into account the British Overseas Territories and how Brexit will affect us.



Warnings on how badly the Overseas Territories will be affected have been made by many organisations from UK Overseas Territories Conservation Forum to the EU Committee in the House of Lords. As the UK Independent points out, the Overseas Territories have an unusual status as neither fully parts of the UK nor independent states; these territories cannot access most domestic and international funding. The European Union has offered a life-line, supporting about one third of all Overseas Territories conservation efforts. Right now there is no plan to make up for the shortfall in funding when Britain leaves the European Union.

The Royal Society for the Protection of Birds told the UK Independent, these forgotten corners of the globe are home to more penguins than any other nation, a third of the world's albatrosses and the largest coral atoll on the planet. Many of the animals and plants found in these territories are critically endangered, and scientists estimate there are more than 2,000 species still awaiting discovery in their forests and lagoons.

As the Brexit date looms, the government has promised to continue supporting ongoing projects in these regions, but beyond that local environmental groups are worried about how they will stay afloat.

The Lords EU committee raised some of these concerns with former Brexit secretary David Davis in September 2017, and criticised the "lack of detail" in Davis's response when one was finally received in March 2018. The present Brexit minister says he is confident Britain can get a good Brexit deal

"We fear that the lateness of the response, combined with the lack of detail in the reply, will do little to reassure the overseas territories that you are, as you claim, taking seriously the issues raised

by them," wrote the Lords EU committee chairman Lord Boswell of Aynho.

The RSPB spokesman said there is a tendency in the UK to overlook these distant lands, and while more powerful lobbies had received concrete responses to their Brexit concerns, the environment in overseas territories had been left with "a big question mark". A UK Government spokesman said, "We recognise the great importance of these unique environments, and are considering how environmental funding for them can best be provided after we leave the EU." This is very similar to the phrase used in response to the question at the beginning of this report. Despite all the words, after two years of Brexit they have not even got started yet.



***Lord Boswell of Aynho –
The late response and lack of detail
give little reassurance***



WASTE MANAGEMENT SERVICES

PROCEDURES FOR DISPOSAL OF HAZARDOUS WASTE AT HORSE POINT LANDFILL SITE

The following is a public announcement from Waste Management Services:

Horse Point Landfill Site (HPLS) facilitates the disposal of hazardous wastes which is carefully managed on site to prevent negative impacts on human health and/or the environment. This is only possible if hazardous waste is delivered to the site in a safe manner.

Hazardous Waste will only be accepted at Horse Point Landfill Site by prior arrangement with Landfill Manager, Patrick Crowie, on tel: 23655 or by email: landfill.manager@helanta.co.sh.

The correct procedure to ensure acceptance of hazardous waste at HPLS is as follows:

Solid or powdered hazardous waste: wrapped and sealed, then wrapped and sealed a second time with the outer wrapping labelled with the name of the waste and marked as 'HAZARDOUS'.

Asbestos: must be double wrapped and sealed in heavy duty plastic and marked as asbestos and 'HAZARDOUS'.

Liquid hazardous waste: sealed in an appropriate container, labelled with the name of the waste and marked as 'HAZARDOUS'.

For all hazardous wastes, a copy of the Material Safety Data Sheet must be supplied with the waste, and submitted to the Landfill Site staff upon arrival at HPLS or by emailing the Landfill Manager in advance of the hazardous waste delivery.

Vehicle batteries, small amounts of waste oil (including cooking oil) and paint: can be safely disposed into the appropriate containers within the Public Recycling Facility without prior arrangement with the Landfill Manager. For the disposal of larger quantities of waste oils and paints, please contact the Landfill Manager.

The public are advised that all deliveries of hazardous waste to HPLS must be in line with the above procedures. Failure to adhere to these procedures may result in the hazardous waste being refused disposal.

Any hazardous waste spills on site must be reported to Landfill Staff immediately.

The public is thanked for their co-operation.

Guidance for the safe disposal of hazardous waste can be found on the SHG Website via: <http://www.sainthelena.gov.sh/horse-point-landfill-site>.

SHG

10 September 2018

<http://www.sainthelena.gov.sh>



St Helena
Government

New Improved System for Medical Records

In a month's time a new system will be in use at the Health Department for storing patient's medical records. Medical news website *Digital Health* reported the electronic patient record system developed by *PatientSource* brings together all primary and secondary care data in one place.

Health Director Akeem Ali said the *PatientSource* system is an excellent fit for St Helena's needs and promises to be a fantastic stepping stone to managing population health data. He added, "The simplicity of the system is the clincher for both clinical and administrative staff."

PatientSource is a British company and the St Helena contract is their first outside the UK. Based in Cambridge *PatientSource* the company was formed in 2010. Since then *PatientSource* has developed an integrated electronic medical records system where the design has been led by doctors and patients. It can be used with hand-held tablets rather than deskbound personal computers and uses Artificial Intelligence to assist diagnosis, detect deterioration and forecast resource usage.



Patient Care Safely in One Place

FOR SALE



Qpod – A real head turner!

- 340Cc
- MOT'd until January 2019
- Engine has only 7000 + km (4300 miles)

Includes 2 new rear tyres, new rear mud guards, starting motor and solenoid. Comes with 2 removable doors and roof and very own portable Monster garage plus extras. £3995 ono.

Stewart 24614/63977

SOCIAL ENTERPRISE GRANTS

Enterprise St Helena is offering funding to support Social Enterprises. Grants will be offered at 75% of the project cost to a maximum grant value of £7,500.00.

WHO IS ELIGIBLE TO APPLY?

Social Enterprises, Non-government Organisations, Associations and Charitable Organisations with a business approach and a social aim, or provide products and services that deliver social, economic and environmental benefits to the local community and/or enhance the local tourism product.



This grant is subject to eligibility, policy and terms and conditions

***Skills Development Grants are offered at 75% of total cost of course / training project, with the minimum amount of £500.00 up to a maximum of £5,000.00.**

For more information please contact Mandy O'Bey on telephone 22920 or e-mail mandy.obey@esh.co.sh



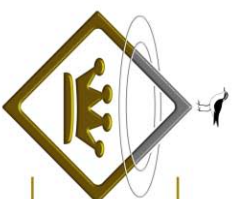
Enabling Tourism and Economic Growth

Head Office | ESH Business Park | Ladder Hill | Tel: +290 22920 | Email: info@esh.co.sh



Visit us online Business and Investment: www.investinsthelenatourism.com

Tourism: www.sthelenatourism.com



Bank of St. Helena Ltd.

www.sainthelenabank.com

WITHDRAWAL OF ACCOUNT TRANSFERS WITH EFFECT FROM 01 JANUARY 2019

All customers are advised that with effect from Tuesday, 01 January 2019, Bank of St Helena will no longer process Account Transfers which are accepted as a payment method **outside of the Bank.**

Account Transfer Forms **used within Bank Branches and Kiosks** to transfer funds to other accounts, or to make bill payments, will remain in effect.

Head Office: Market Street · Jamestown · St Helena Island · STHL 1ZZ

T. +290 22390 · F. +290 22553 · email. info@sainthelenabank.com · web www.sainthelenabank.com

Established and regulated under the Financial Services Ordinance, 2008, the Company Ordinance, 2004 and the Company Regulations 2004



APPLY FOR YOUR **FREE** LOCAL DEBIT CARD TODAY!

LOCAL DEBIT CARD SERVICES MAKING BANKING BETTER

Bank of St Helena
Market Street, Jamestown
St Helena Island



(290) 22390



info@sainthelenabank.com





Please be advised that due to the recent adverse weather conditions which have affected the animals, pastureland as well as the cultivating of arable products, the 2018 Agriculture Programme Working Group has decided to postpone the Country Fair to the end of January 2019.

However, a smaller event will be held at SHAPE, Sandy Bay during October 2018 and further details will be published shortly.

If you have any queries or concerns please do not hesitate to contact Delia Du Preez on telephone 22920 or email on delia.dupreez@esh.co.sh



Enabling Tourism and Economic Growth

Head Office | ESH Business Park | Ladder Hill | Tel: +290 22920 | Email: info@esh.co.sh



Visit us online Business and Investment: www.investinsthelena.com | Tourism: www.sthelenatourism.com

Vacancy - Are you interested in working with and through island community groups, to build a stronger and more resilient community for the betterment of St Helena?

If so the Community Development Organisation (CDO) is looking for someone just like you. We are a small and dedicated voluntary group working to strengthen non-governmental community organisations.

Community Development Organisation Manager, Fixed Term 2 Years
Part-time at a rate of £7per hour

RESPONSIBILITIES

Manage the day to day operations of the Community Development Organisation and the Community Grant Scheme, with the overall objective of supporting and developing civil society on St Helena.

QUALIFICATIONS AND SKILLS

Degree and /or appropriate professional qualification/experience, knowledge and understanding of key stakeholders and experience of working to a committee. Excellent oral and written communication and exemplary interpersonal skills, with advanced skills in Microsoft Office

This is a part time position and estimated hours of work are 21 hours per week. However, occasional evening and weekend work may be required. Having your own transportation would be desirable.

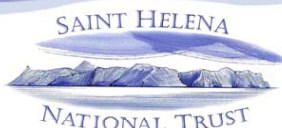
For further information please contact Kirsty Joshua, on telephone number 23999 after 5:00pm.

Please send your CV and cover letter addressed to Kirsty Joshua, Community Development Organisation Chair via e-mail to community.sthelena@gmail.com.

Closing date for applications is Friday, 28th September 2018

Community Development Organisation

✉ community.sthelena@gmail.com



Vacancy for Marine Research Coordinator

Full-time position available – two year contract

An exciting opportunity has arisen to join the National Trust's Marine Team which has the overall mission of championing St Helena's Marine Protected Area (MPA), ensuring it makes genuine conservation gains.

As our Marine Research Coordinator you will be leading our whale shark research, as well as coordinating other projects which fall under our key work areas.

The whale shark research will be conducted in collaboration with the Environmental Management Division (EMD) Marine Section of the St Helena Government (SHG) and Georgia Aquarium.

You will be responsible for overseeing budgets, procuring research equipment, submitting research permits, liaising with project partners, coordinating field work and producing promotional communications.

The successful candidate must have an enthusiasm for the marine environment, exemplary communication skills, and experience coordinating projects. They must be self-organised, reliable, a team player and be keen to develop their own skills. The successful candidate will be trained and supported in the role, with the aim that they develop and take on more responsibility over time.

The starting salary for the post is £11,034 (full-time) per annum, with the possibility of salary increase based on performance and funding.

For a full job description please contact Amanda Constantine on 22190 or amanda.constantine@trust.org.sh

CLOSING DATE FOR APPLICATIONS: Friday 28th September @ 16:00.

APPLICATION FOR PERMISSION TO EXCISE PARCELS OF LAND

NOTICE IS HEREBY GIVEN that an Application has been received in respect of the following proposal:

PROPOSED EXCISION OF Parcels of Land, References TH020205, TH020204, TH202203 and TH202202 from the Green Heartland Zone to the Intermediate Zone in accordance with LPDC Regulations 2013, 'Modification or revocation of plan 7 (1). Council is asked to approve excision of the abovementioned four Land Parcels from Green Heartland Zone and rezone as land located within the Intermediate Zone with associated development privileges as provided by a Design Brief.

Details of the Application may be inspected by prior appointment with the Planning Section, Essex House, Main Street, Jamestown, Monday to Friday, from 8.30am to 4pm. Appointments can be made with the Secretary on Telephone No 22270 or email Karen-Isaac@enrd.gov.sh stating the Application Reference Number they wish to inspect.

Any person who wishes to make Representations on the above Application should make them in writing within 8 weeks, to the Planning Office, Essex House, Main Street, Jamestown or Email shane.williams@enrd.gov.sh

Public Review Commencement Date : 11th September 2018

Public Review Closing Date : 6th November 2018

David Goodrick
Chief Planning Officer



St Helena
Government



Bank of St. Helena Ltd.

www.sainthelenabank.com



REMOTE BANKING SEPTEMBER 2018

Save yourself the trip into Jamestown

Bank of St Helena would like to advise the public that Remote Banking will commence at:

Scotland — Friday, 21 September, 09:30 — 12:30

HTH Supermarket— Monday, 24 September, 09:30—13:00

Longwood Enterprise Park— Friday, 28 September, 09:30—14:30

Head Office: Market Street · Jamestown · St. Helena · South Atlantic · STHL 1ZZ

Tel: +290 22390 · Fax: +290 22553 · e-mail: info@sainthelenabank.com · web: www.sainthelenabank.com

Established and regulated in St. Helena under the Financial Services Ordinance, 2008 the Company Ordinance, 2004 and the Company Regulations, 2004

THE Property Shop

For Sale

No.1 Terry Estate, Young's Valley



**Semi-detached, extended and modernised
2-bedroom bungalow**

Modern interior, fertile plot, secluded location
with space for further development

Price: £195,000

For more information, contact **The Property Shop** on (+290) 23255

see www.tps.co.sh or email PropertySales@tps.co.sh

Connect
SAINT HELENA LTD

TIP OF THE WEEK

Unplug any electrical
device that's not being
used.

Many appliances,
especially computers,
televisions, and VCRs
draw power even when
turned off.

Vacancies - Ascension Island

Ref SS26343

Interserve Defence Ltd has vacancies on the Ascension Island Base.

ADMINISTRATOR/CASHIER

- Maintain Public and Service Funds Accounts; provide advice and support to the account holders.
- Ensure bills are correctly authorised to the appropriate fund and paid promptly.
- Update computer records daily.
- Provide cover for the Cashier and the Personal Assistant to the Base Commander during periods of absence.
- Carry out other tasks as requested by line management.

STORES PERSON

- Responsible for processing service requests and issuing stores.
- Undertake routine stores transactions and stock control.
- Process the goods receiving methods within the Stores Department.
- Process the monthly stores reports in the absence of the chargehand/supervisor.
- Support the chargehand and supervisor in all areas.
- Ensure stores area is kept in a tidy state.

What are we looking for

- Applicants should have the appropriate qualifications and/or experience.
- Be prepared to receive training on the job and/or in UK.
- Will have a 'can do' mature attitude, behave in a flexible, reliable and professional manner; have an open approach, will pass on knowledge, their experience and show a willingness to assist others. They must be well-organized, self-motivated team player who is keen to learn.
- Applicants should be age 18 or over and will pass Medical, Dental and Security checks.

Interserve pays a competitive salary, monthly site allowance and a bonus at 13th and 27th months of tour. Hours of work are 47.5 per week. The contract duration is 27 months unaccompanied status with 74 days leave excluding weekends. Air transportation for 4 agreed holiday periods will be at the Company's expense. Accommodation, meals at the mess and work clothing are all provided.

To apply or request further information email Theresa.Corker-Coleman@interserve.mod.uk, tel 00247 63400 or 66339.

Closing date is Tuesday 25 September 2018.

At Interserve we deliver construction, equipment, facilities management and citizen services. We are headquartered in the UK and FTSE listed.

Our goal is to provide a cost effective and efficient solution to our clients' needs. We have gross revenues of £3.7 billion and a workforce of circa 75,000 people worldwide.

We aim to be a great place to work for our employees where everything we do is shaped by our core values.

HEALTH DIRECTORATE

VACANCIES - ENVIRONMENTAL HEALTH TECHNICAL OFFICERS

The Health Directorate has vacancies for two Environmental Health Technical Officers. The successful candidates will be expected to provide support to the Environmental Health Officers, in all environmental health activities which will require both office and outdoor working on a regular basis as required with the overall aim of protecting and improving the health and well being of all.

Some of the key tasks include:

- Carrying out inspections and investigations and submitting necessary recommendations and reports;
- Researching, compiling, synthesizing, analyzing and interpreting public health information and data necessary to meet environmental health objectives;
- Providing advice and guidance to the public in response to questions and projects, environmental health programs, applicable ordinances, policies and procedures;
- Participating in presentations to public groups and governmental bodies to explain and clarify environmental health reports and recommendations;
- Conducting complaint investigations of various sites in order to have first-hand knowledge of the location under study;
- Participating in enforcement activities which may include giving evidence in court and other quasi-judicial hearings including acting as the key witness in prosecutions.

Essential qualifications for this post are:

- GCSE qualification or equivalent in Maths and English; and one Science related subject (Biology, Physics or Chemistry) at grade C or above;
- Valid drivers licence;
- Good IT Skills, proficient in the use of all Microsoft programmes
- Experience in food safety and health and safety related matters



Salary is at Grade C, commencing at £8,613 per annum.

All appointees are subject to the successful candidate providing satisfactory clearances, including a medical check and vetting/DBS clearance. SHG reserves the right to have information provided on the application form independently verified.

SHG positively accepts applications from all members of the community regardless of race, gender, disability, age, sexual orientation, religion or belief, and will consider all applications on the basis of merit, in accordance with the person specification. All disabled applicants meeting the minimum criteria listed in the job profile will be guaranteed an interview.

For further information please contact Mrs Georgina Young, Senior Environmental Health Officer on telephone no. 22500 or email: Georgina.Young@sainthelena.gov.sh

Application forms and a Job Profile which are available from the Health Directorate should be completed and submitted through Directors where applicable to Miss Madonna Henry, Human Resources Officer, on telephone no. 22500 email: madonna.henry@sainthelena.gov.sh Health Directorate by Tuesday, 25 September 2018.

Akeem Ali (Dr)
Director 11 September 2018
Health Directorate

HEALTH DIRECTORATE

VACANCY FOR FOOD AND WATER LABORATORY TECHNICIAN

An exciting opportunity has arisen within the Health Directorate for a Food and Water Laboratory Technician. The successful candidate will be expected to carry out all tasks involved in the collection, preparation of samples for chemical and microbiological analysis of food, water and animal feed samples, and to perform all associated administrative and general laboratory tasks as required. Duties will include ensuring adequate stocks of culture media which has undergone stringent quality control procedures as required by the ISO 17025 accreditation standard .

Some of the key tasks for this post include:

- To assist the Senior Food Microbiologist with routine preparation and testing of food and water samples
- Responsible for preparation of microbiological media according to documented Standard Operating Procedures (SOP's) in accordance with ISO 17025 standards and for Quality Assurance of prepared media in accordance with ISO 17025 accreditation requirements
- Responsible for chemical, microbiological and other analysis of food, water and animal feed samples
- Liaise with overseas accreditation organizations via video link to demonstrate quality control and maintain records required for UKAS/ISO 17025 accreditation at required levels in readiness for external verification by UKAS
- Responsible for maintenance and verification of equipment used in media preparation to agreed schedules, such as autoclaves, water baths and incubators to ISO 17025 standard requirements
- Responsible for receiving and storing samples for analysis appropriately

The successful candidate should be in possession of a GCSE qualification or equivalent in Maths, English and a Science related subject at grade C or above and must be computer literate. A minimum of one years' experience working in a medical laboratory, or similar environment is desirable.

Salary for the post is at Grade B, commencing at £6,722 per annum.

All appointees are subject to the successful candidate providing satisfactory clearances, including a medical check and vetting or DBS Disclosure and references. SHG reserves the right to have information provided on the application form independently verified.

SHG positively accepts applications from all members of the community regardless of race, gender, disability, age, sexual orientation, religion or belief, and will consider all applications on the basis of merit, in accordance with the person specification. All disabled applicants meeting the minimum criteria listed in the job profile will be guaranteed an interview.

For further information please contact Mr Geoffrey Benjamin, Lab Manager on email Geoffrey.Benjamin@sainthelena.gov.sh or Mr Gift Sibanda, Senior Food Microbiologist on email gift.sibanda@sainthelena.gov.sh or by telephone no. 22500 extension 2035/2043 via the Hospital switchboard.

Application forms are available from the Health Directorate and should be completed and submitted to Madonna Henry, Human Resources Officer, Health Directorate or email madonna.henry@sainthelena.gov.sh by Tuesday, 25 September 2018.

Akeem Ali (Dr)

Director

11 September 2018

Health Directorate



Armchair Supporters View by Nick Stevens

There was no Premier League football last week due to the International friendlies and the newly form UEFA Nations League. Spain was probably the stand out team in the Nations League as they beat England 2-1 and then defeated World Cup Finalist Croatia 6-0 in League A.

We will gladly welcome the EPL back to our TV screens this weekend. Due to the return of the Champions League and Europa League all the top teams will play their games on Saturday. The stand out game is possibly the 11.30am game between Spurs and Liverpool. This should be an entertaining game which should see a few goals being scored. I predict that Liverpool won't lose but will drop points so therefore a score draw.

In other matches Bournemouth play Leicester City; Chelsea play Cardiff, Huddersfield v Crystal Palace, Man City v Fulham, Newcastle v Arsenal and the late match on Saturday will see Watford who have a 100% record play Man United at 4.30pm. On Sunday Wolves play Burnley at 12.30 and Everton will play West Ham at 3pm. I do fancy West Ham to pick up their first win on Sunday.

Monday evening Southampton will play Brighton.

Tuesday 18th and Wednesday 19th September will see the return of the Champions League the groups are:

Group A: Atletico Madrid, Borussia Dortmund, Monaco, Club Brugge.

Group B: Barcelona, Tottenham, PSV Eindhoven, Inter Milan.

Group C: Paris St-Germain, Napoli, Liverpool, Red Star Belgrade.

Group D: Lokomotiv Moscow, Porto, Schalke, Galatasaray.

Group E: Bayern Munich, Benfica, Ajax, AEK Athens.

Group F: Manchester City, Shakhtar Donetsk, Lyon, Hoffenheim.

Group G: Real Madrid, Roma, CSKA Moscow, Viktoria Plzen.

Group H: Juventus, Manchester United, Valencia, Young Boys.

Group A-D matches will take place on Tuesday and Groups E-H will be played on Wednesday

The Europa League will begin next Thursday and the groups are:

Group A: Bayer Leverkusen (Ger), Ludogorets Razgrad (Bul), FC Zurich (Swi), AEK Larnaca (Cyp)

Group B: Salzburg (Aut), Celtic, RB Leipzig (Ger), Rosenborg (Nor)

Group C: Zenit St Petersburg (Rus), FC Copenhagen (Den), Bordeaux (Fra), Slavia Prague (Cze)

Group D: Anderlecht (Bel), Fenerbahce (Tur), Dinamo Zagreb (Cro), Spartak Trnava (Svk)

Group E: ARSENAL, Sporting Lisbon (Por), Qarabag (Aze), Vorskla Poltava (Ukr)

Group F: Olympiakos (Gre), AC Milan (Ita), Real Betis (Spa), Dudelange (Lux)

Group G: Villarreal (Spa), Rapid Vienna (Aut), Spartak Moscow (Rus), RANGERS

Group H: Lazio (Ita), Marseille (Fra), Eintracht Frankfurt (Ger), Apollon Limassol (Cyp)

Group I: Besiktas (Tur), KRC Genk (Bel), Malmo (Swe), Sarpsborg (Nor)

Group J: Sevilla (Spa), Krasnodar (Rus), Standard Liege (Bel),

Akhisar Belediyespor (Tur)

Group K: Dynamo Kiev (Ukr), Astana (Kaz), Rennes (Fra), Jablonec (Cze)

Group L: CHELSEA, PAOK Saloniki (Gre), BATE Borisov (Blr), Vidi (Hun)

Junior Football

Due to the pitches being waterlogged at Francis Plain 3 matches took place at the Leisure Park in Jamestown last Sunday. The results are:

Young Harts 16 v Jungle Rangers 4

G/S Young Harts: Micadean Crowley 8; Jaydee Caswell 3, Jet Lee Yon 3 & 2 Own Goals

G/S Jungle Rangers: Toure Osborne 2; Blaze Baldwin 1 & Riley Yon 1

POM: Micaden Crowley & Toure Osborne

Dream team 31 v PPS Dolphins 2

G/S Dream team: Blake Peters 17, Taylon Phillips 7, Dominic Richards 5 & 2 own goals

G/S PPS Dolphins: Lars Williams

POM: Blake Peters & Lebron George

Allstars 27 v Rangers 1

G/S Allstars: Joey Thomas 12; Christo Crowie 3, Aiden Yon-Stevens 8, Evan Constantine 3 & Courtney Green 1

G/S Rangers: Jolan Henry 1

POM: Joey Thomas & Jolan Henry

Remaining Futsal Fixtures:

Saturday 15th September

Pitch 1

9.30am: PPS Dolphins v Yellow Devils

10.15am Jungle Rangers v Dream team

Sunday 23rd September

Pitch1

9.30: Young Harts v PPS Dolphins

10.15am: Jungle Rangers v Dream team

Pitch 2:

9.30am: Allstars v Chop Shop

10.30am: Rangers v Titans

Saturday 29th September

Pitch 1

9.30: PPS Dolphins v Jungle Rangers

10.15am: Dream Team v Yellow Devils

Pitch 2

9.30am: Allstars v Titans

10.30am: Chop Shop v Rangers



Armchair Supporters View by Nick Stevens

NATIONAL AMATEUR SPORTS ASSOCIATION OF ST HELENA

SHFA Fixtures

We have now missed 4 weeks of the Season due to the pitch being waterlogged. It however does look good for Football to recommence this weekend.

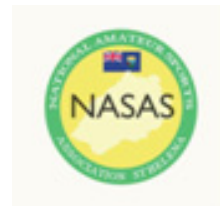
Fixtures are: Sat 15th Sept

1. Pm* Harts v Bellboys
 Organisers: Saints
3. Pm* Axis v Crusaders
 Organisers: Rovers

*Please note there is an early start to Saturday's games

Sun 16th Sept

- 1.30pm Saints v Wirebirds
 Organisers: Chop Shop
3.30pm Rovers v Wolves
 Organisers: Chop Shop



The Bi-Annual General Meeting of NASAS will be held at the Education Learning Centre on Monday 8 October 2018 starting at 7.30 pm.

Agenda

Welcome
Chairman's Report
Confirmation of Minutes
Presentation of Audited Accounts
Election of Committee
Any Other Business

Members of the public are invited to attend and any person interested in becoming a committee member of NASAS can submit their nomination in writing with a copy of their Vetting Certificate to the Secretary Tina Yon-Stevens by Monday 1 October 2018.



Agriculture and Natural Resources
Division



WARNING to livestock owners

Currently due to the wet, cold weather there is a shortage of good fresh grazing and as a result cattle are cropping the plant known locally as 'ink'.

This plant - *Cestrum laevigatum* - is highly toxic and is now causing fatalities. Even small amounts cause severe liver damage so any cropping should be avoided. Regular intake over several weeks results in sudden death due to bleeding in the brain and heart muscle.

Sheep and goats are also affected. We urge livestock owners to do what they can to prevent livestock having access to this plant, especially now when grazing is in short supply.

Armchair Supporter's view

by Nick Stevens



Training and Fund Raising is the topic of the day in regards to the St Helena Team who are preparing for the International Football tournament in Ynys Mon in June 2019.

The Raffle Tickets for the SHFA Super Raffle should be with us in the next two weeks and will go on sale. The Star Prize is a Ford Focus ST. Tickets will be price at £20. The Car will arrive on island on Voyage 10 of the MV Helena



Another Fund Raiser will take place at the Rock Club on Saturday 6th October starting at 8.30pm. This will be in the form of a Reggae Night. Each Player who is in training plus committee members has 10 tickets each for sale. Tickets cost £3 each. More on this event will be announce soon.



St Helena FA Squad warming up prior to their Cross Fit Circuit Training

St Helena Yacht Club

Membership now stands at an impressive 62 so it is timely that the yacht club has at last got its licence to sell beer and spirits. The latest members' news says, "beer is on offer along with soft drinks, bottled water, hot drinks and WIFI. It's been a long time coming but please feel free to come along to the club, kick back and relax!"

Thursday afternoon is always reserved for a craft session from 3pm onwards; making costumes and props for the yacht clubs entry in the Spirit of the Sea Carnival in aid of Cancer Awareness.

Tuesday evenings is 'Weigh Anchor' time when at 5:50pm people assemble to discuss what they are doing to shed some pounds. New members are encouraged to go along and find out what its all about.

On 15th September (tomorrow) the Yacht Club has a stand at the music festival in Grand Parade. Donations of bottle or cans for the stall are welcome. Funds raised are for the Yacht Club and the Red Cross.

Friday 21st September the SHYC is holding a fish fry at the club rooms. This will be at 6.30pm for a 7 pm start. We will have salad, fries and a variety of fish on offer. We are asking for a small donation for each plate. This would be in the region of £4. We also plan to have live acoustic music playing and a friendly, relaxing environment for you to spend your Friday evening. If you are happy to make a salad to bring and share that would be much appreciated. We look forward to seeing you there. Please bring friends and family along. All are welcome.

On Friday 12th October we will have a fish fry at the yacht club. This will be a fun, relaxing evening and give those involved in the carnival a chance to promote the event and encourage you all to take part. The carnival theme is Spirit of the Sea and is in aid of a great cause- Cancer Awareness.

Saturday 20th October Carnival Day! Please come and support us as we raise funds for cancer awareness! It will be lots of fun and for a great cause!



**Big mudslide at the peaks on Tuesday morning
Picture: Betty Knipe**

St Helena has an X-CLASS Shooter!

My Journey

It's only taken me 18 years! I've finally joined the exclusive shooting group – X-CLASS!

On leaving ST Helena back in 1999, I was the best shooter on the Island. On joining the NSRA in 2000 I was classified as a B-Class shooter. At that time I viewed X-Class as far superior shooters, amazed at their consistent high scores. Deep down I wanted to be a part of this elite group of shooters, the best in the UK. Over the years I moved up into A-Class but as the years past, reality started setting in. I had gone as far as I could, mid table finishes or in the lower half. Performances like this, was not going to get me into X-Class. Deep down felt I had failed, reached my limit, and accepted I wasn't good enough to make X-Class.

Then, about 3 years ago something clicked into place. Reading the wind became more natural, my hold became much steadier and my trigger release much smoother. Consistency was the next challenge. Last year I had the skill and was expecting to make the grade, but unfortunately it was not to be. This year was not plain sailing. At the end of February injury struck. I tore a right shoulder tendon and that just made shooting so uncomfortable. Unfortunately it will never heal back and to get full rotation of my arm again, will require surgery. With the Commonwealth games just weeks away my GP prescribed anti-inflammation tablets to help relieve the pain while training. After the Commonwealth Games I took time out, and let the inflamed shoulder settle down. July I started light training and to my surprise I was back on form and shooting well. Training was dictated by how my shoulder felt. When the Bisley meeting in August rolled around I felt focused, relaxed and ready. With a first place and a few second and third place finishes, I knew I had done it. My 18 year old dream was now a reality! I was now an X-Class shooter!



To become an X-Class Shooter

NSRA (National Small-bore Rifle Association) runs shooting in the UK. Shooters are placed into classes depending on how good they are. Classes are A, B, C, and D, with A at the higher end and D at the lower end, which means that in NSRA competitions you shoot against shooters at the same level as you are.

To become an X-Class shooter you will need to be in A-Class and also finish in the top 10% at an NSRA meeting. There are only two meetings a year, one in Scotland and the other at Bisley in Surrey. What goes up must come down. So if 10 shooters get promoted up into X-Class, then 10 shooters get demoted down into A-Class. Hope I managed to explain it without making it sound complicated :).

Simon Henry

ST HELENA COMMUNITY COLLEGE SKILLS FOR SUCCESS

The St Helena Community College has on offer Skills for Success courses that will give the community the opportunity to build and develop practical skills for the workplace.

The Skills for Success courses are offered in three tiers:

- Skills for Success – Foundation
- Skills for Success – Intermediate
- Skills for Success – Advanced

Each tier has a range of short courses that will benefit students in their place of work from a Personal Motivation foundation course, to a Minute Taking intermediate course, among others.

Though none of the courses are externally accredited, participants will receive a certificate of participation for each unit completed.

Students can however, from this month, also work toward a full certificate for each Skills for Success tier offered jointly by Enterprise St Helena (ESH) and the SHCC. ESH and the SHCC are committed to working together to provide skills development training to help build St Helena's economy and workforce. Acting Assistant Director of Lifelong Learning, Angela Benjamin, said:

"The SHCC in partnership with ESH are proud to offer Skills for Success Certificates. These comprises of both mandatory and optional units for the foundation and intermediate levels and completion of the Supervisory Skills course in the ad-

vanced level. These are short courses which delivers the essential underpinning knowledge for both private and SHG businesses. We are excited and eager to commence our very own certificate and encourage participation from all in the community."

The Skills for Success foundation courses are delivered in a half-day format. Having successfully completed all mandatory and optional units, a Skills for Success Foundation Certificate will provide the underpinning knowledge to succeed in a business environment and build confidence to face the world of work.

The Skills for Success intermediate courses are full day courses. Having successfully completed all mandatory and optional units, a Skills for Success Intermediate Certificate will provide the underpinning knowledge to take on more responsibility in the workplace and begin developing the skills needed for career progression.

The Skills for Success advanced course in Supervisory Skills is delivered in three half-day sessions. Completion of this course will see students awarded a Skills for Success in Supervisory Skills Certificate. This certificate will provide preparation for supervisory roles and can be a good foundation for accredited training in a given career area or in management skills.

Every Skills for Success Certificate is issued jointly by the SHCC and ESH.

SHG, 7 September 2018



Rebel With Velvet Paws

*Creative Saint
Helena Writer's
Group with Jodie
Walters*



**The Launch of a new
Children's Picture Book At
The Museum of St Helena
Wednesday 19th September
at 5.30 pm All welcome**

**Published by Rowanvale Books
ISBN :978-1-911569-82-4**



"Are YOU my Mother?"

Saints MX Club Fund Raiser

Guinea Grass Community Centre

Saturday 6th Oct 18

7.30pm til late

Cash Bar

£1 Entrance Fee – Adults Only

**Island Politics Followed by Club DJ's
with Mix Music**

Motorcross Competition coming your way soon

**PRESS
RELEASE**

Enterprise St Helena

Divestment of St Helena Tourism's Booking Service

St Helena Tourism are currently working towards "phasing out" the current booking service offered to visitors. This service will soon be divested to Destination Management Companies (DMC), who are currently registered with the organisation and complying with recommended best practices.

A Destination Management Company (DMC) is a professional service company possessing extensive local knowledge, expertise and resources working in the design and implementation of events, activities, tours, transportation and programme logistics.

The current booking service is managed through the tourism visitor centre in Jamestown and travellers are provided with assistance on accommodation, transportation and excursions.

Since the commencement of air service to St Helena there has been a noticeable increase in the number of enquires received through the St Helena Tourism's booking system, as opposed to the requests received during the RMS service. This increase has led to the evaluation of the current booking service offered by the Tourist Office.

A booking service can now be viewed as a more viable and attractive private sector enterprise due to the increased enquiry demand. Clients and international tour operators have also expressed a need for a rounded booking service to offer all arrangements for traveller's needs.

Several destination management companies who are registered with the Tourist Office have already been providing a similar service for around 4 years and a gradual process will be undertaken to ensure a smooth and fair process in the divestment of bookings.

St Helena Tourism will continue to actively promote all businesses who are registered with St Helena Tourism through current digital platforms and print material to clients and tour operators selling St Helena.

Training will be offered to DMC's in the coming months to enable international readiness and accreditation with the St Helena Tourist Office. Opportunities will also be available for tour guides to attend certain aspects of these training workshops.

If you would like further information on how this transition may affect you and your businesses, please contact Tourism Manager Melissa Fowler on email: melissa.fowler@tourism.co.sh or tel: on 22158.



Enabling Tourism and Economic Growth

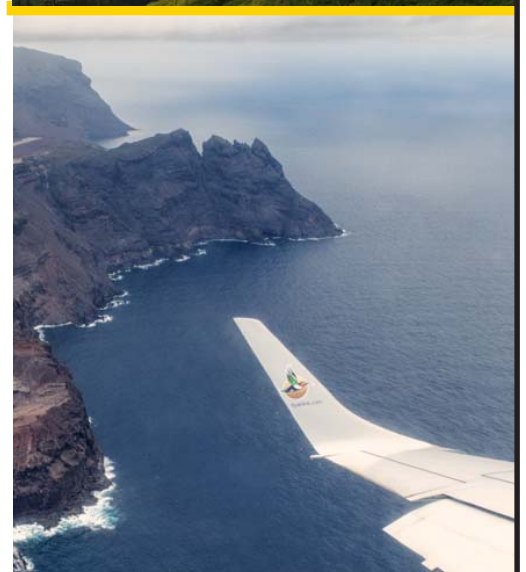


Head Office | ESH Business Park | Ladder Hill | Tel: +290 22920 | Email: info@esh.co.sh

Visit us online Business and Investment: www.investinsthena.com

Tourism: www.sthelenatourism.com

helenatourism.com



New Prison Back in Land Planning

Andy Pearce

At Wednesday's planning authority meeting, the application for the new prison in the Bottom Woods Important Wirebird Area, which is a National Conservation Area, was nodded through (by members who are all appointed directly by the Governor) and will now be presented to Exco for final approval.

Earlier this year, all five Exco members (which included a stand-in from Legco) were behind the Governor when she presented the proposal at a public meeting 'for information' at Harford Committee Centre. On pinning the plan to the wall, which showed the prison taking up about 1% of the Wirebird Area, she said the final scheme will be moved further down the hill, so even less will be in the conservation area.

When the application was registered on 7th August, it showed the site had also been increased in size and it had also had been moved in the opposite direction to be almost entirely in the conservation area. The prison site within the designated Wirebird protected area has been increased by a factor of ten.



Broken black line -Proposed prison site as displayed at public meeting

Solid white line -Proposed prison site in the development application

Right side of black line - Bottom Woods Important Wirebird Area

The Acting Chief Planning Officer (aka the Chief Engineer) had agreed to register the application without an accompanying Environmental Impact Assessment (EIA). He said the Chief Environmental Officer had advised that an EIA was not required for this application and he was happy with that.

The Natural Heritage policy NH4 of the adopted Land Development Control Plan (LDCP) says, "Development proposals which affect Wetlands of International Importance, Important Bird Areas (IBAs) and Internationally Important Wirebird Sites will be subject to Environmental Impact Assessment, irrespective of the scale of the development, before the development application is considered."

This policy was dismissed by the planning officer because the LDCP planning policies were secondary to the Ordinance he said. The Chair of the authority who is also President of the St Helena National Trust, emphasised this was only an outline application saying it didn't need an EIA until a later stage. One member queried this saying the authority needed to be clear about whether an EIA was needed because uncertainty on this issue had caused the authority many problems with the recent Ladder Hill sewerage application, resulting in a year's delay.

In 2012 the British Government entered the 'Island of St Helena' upon the UNESCO World Heritage Tentative List of potential World Heritage Sites. Its submission referred to three decades of concerted effort to conserve the Wirebird. If Exco now approves this application it could result in the British Government funding a construction site on an area it pledges to protect as a site of Outstanding Universal Value on behalf of UNESCO and the world.



The World Heritage Site Buddha being destroyed in Afghanistan 2008

Later in the meeting, upon legal advice from the Acting Chief Planning Officer the authority unanimously agreed that 'handling reports' will not be available to anyone other than authority members, either before or after a decision is made.

Handling reports are the general workings of the planning office including public comments and objections and it includes the Officer Report. That is the detailed evidence, the policies and reasoning leading to the official advice given by the planning officer to the planning authority or Exco on whether to approve or refuse an application.

These documents, open to the public before the Ladder Hill sewerage application in 2016, will now be completely out of bounds to public scrutiny for all planning applications and decisions for ever, including the latest prison application.

**St Helena Golf Club
Half Yearly Meeting
Sunday 30th September
At 5:30pm**

St Helena revisited at the Chateau de Malmaison

NEWSLETTER



NAPOLÉON.ORG
THE HISTORY WEBSITE OF THE FONDATION NAPOLEON

This summer, the Fondation Napoléon team and special guests were given a guided tour of the St Helena collection at the Musée national du château de Malmaison, by its director Amaury Lefebure, and head curator of heritage and decorative arts specialist, Isabelle Tamisier-Vetois.

It includes everyday objects and furniture used by Napoleon at Longwood, a few souvenirs of his family that he was allowed to keep, as well as portraits of his companions-in-exile. These emotionally charged objects have been arranged in a new installation in the recently refurbished attic of the country home where Napoleon lived with Josephine. The result is a remarkable evocation of the austere environment of Longwood on St Helena, where the Emperor spent his final years writing his memoirs...



For Sale:

Mitsubishi
Grandis 7
Seater in
**excellent
condition.**
For more infor-
mation, please
**contact tele:
22419**

Expression of Interest

The Saint Helena Government are seeking Expressions of Interest from suitably qualified contractors to undertake the proposed Refurbishment of Red Roof House, Ladder Hill.

For further information, please contact the Project Manager, Mr Mark Plato on telephone 22270 or email mark-plato@enrd.gov.sh .

The closing date by which Expressions of Interest are to be submitted is 12noon on Monday, 17th September 2018 and should be addressed to Miss Tiffany Lawrence (Procurement Officer), at Essex House, Jamestown.

Calling all artists, writers & musicians!

Come on down to the Museum for an innovative workshop about St Helena's Liberated African history.

Produce artwork that will be displayed during the month of December 2018 at the Museum of Saint Helena and could form part of the basis of design for the Liberated Africans Memorial in Rupert's Valley.

Be inspired, Share the story

Museum, Thursday 20th September, 7.30pm till late

Bring what you need to start sketching, writing or composing!

~Art materials will be on sale on the night from the Art & Crafts~



Art & Crafts
Uniquely Saint

Wine & Coffee will be provided
In Collaboration with the Heritage Society, Art & Crafts Charity
and the St Helena National Trust



Let us
Cater
For your next
EVENT



Contact 25507
E-mail:
rosies@helanta.co.sh



FRIDAY 14TH SEPTEMBER 2018

Bar & Restaurant
Opens at 11am

Restaurant Closes at 9pm

Bar Closes at 1:30am

**TREAT YOURSELF TO A
FRIDAY SUNDOWNER!**

@ 9:30PM

**Fabulous
Friday**

DJ BOOM BANG



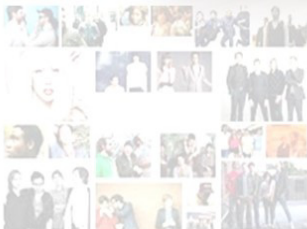
SATURDAY 15TH SEPTEMBER 2018

Bar & Restaurant
Opens at 11am

Restaurant Closes at 9pm

Bar Closes at 1:30am

CALL 25507



7PM

**MIX MUSIC
VIDEO'S**

**DJ J JOHNS
MIX MUSIC
& KARAOKE**

9:30PM

SING LIKE NO
ONE IS
LISTENING!



WATCH OUT FOR

Rosie's Bar

Saint Helena's Music Festival in Jamestown.



Cape Town Freight Forwarders

Services Offered

- Freight consolidation, all cargo sizes
- Vehicles: purchase, tranship or forwarding
- Shopping Lists: buying, collection & delivery
- Excesses baggage shipment (Air freight weight & size limits)

**Business to Business services:
Sourcing, Buying & Exporting**

- Sourcing required products (best value for money)
- Purchasing (eliminate SA VAT claims)
- Warehousing labelling and packaging
- Transhipment handling (UK, Japan, Brazil, China)
- Freight Forwarding (Sea freight and Air freight)

We look forward to your enquiry

Email: sales@zedcore.co.za
Phone: +27 21 5317701

20 Years of serving remote Island communities