

THE ST HELENA INDEPENDENT

Est. 2005

VOLUME XV ISSUE 36, 14th AUGUST 2020, PRICE £1

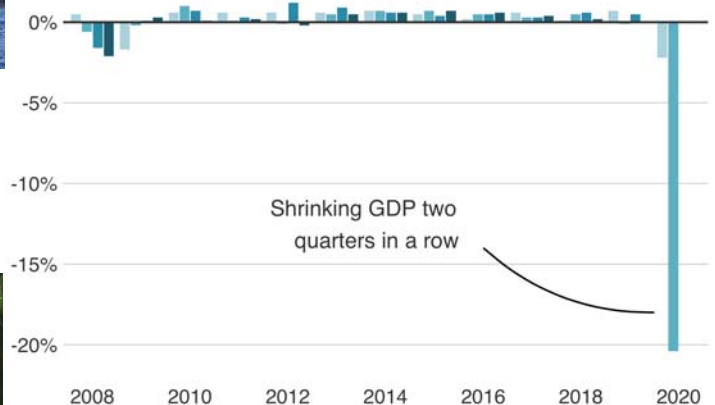
St Helena World Heritage Sites – Can We Get the African Burial Grounds Included



All About the Additional Charter Flights



UK in Recession - Hard Times Ahead



Exco Shelve Decision on Controversial Rupert's Development



Exactly When and How do we Start Tourism Again?



*"Half a league, half a league,
Half a league onward,
All in the valley of Death
Rode the six hundred."*

Lord Tennyson

**OUTLINE PROPOSAL FOR
THE ST HELENA FISHERIES
CO-OPERATIVE (SHFCO)**

St Helena World Heritage Sites – Can We Get the African Burial Grounds Included

World Heritage Sites are designated by the United Nations Educational, Scientific and Cultural Organisation (UNESCO). Heritage sites which gain world recognition through UNESCO designation are sites considered to have outstanding value for natural or cultural, (including historical or scientific) reasons. Of the 1,100 plus sites so far designated, most are because of their cultural significance. 'Cultural' includes built heritage and the British Overseas Territories of Gibraltar, Bermuda and Akrotiri, a Sovereign British Base in Cyprus have World Heritage Sites where outstanding examples of cultural heritage is recognised. Tristan and Pitcairn are recognised for their outstanding examples of natural heritage.



The ancient Greek amphitheatre at Kourion, Cyprus

ignation, St Helena is still considering whether a full application for World Heritage Site designation should be submitted, via the UK Government, to UNESCO. The first step in being recognised by UNESCO for an example of outstanding heritage is to get on the Tentative List. Designation is given to sites which must be unique landmark which is geographically and historically identifiable and has special cultural or physical significance. The sites must be intended for practical conservation for the benefit of future generations and made safe from such dangers as human or animal trespassing and threats from local administrative negligence.

An application from St Helena for inclusion on the Tentative List was submitted to the UK Government department which handles these things in 2010. Two years later, St Helena appeared in the list. The next step is to select sites from the Tentative List for inclusion in the Nomination File. This file is considered by 'middle-men' called the *International Council on Monuments and Sites* and the *World Conservation Union*. These middle-men decide which of the Nomination Files they are considering should be recommend to the *World Heritage Committee* for addition to the List of World Heritage Sites. It is a laborious process and 10 years after the original application it is still to be decided whether St Helena should take the next step in the process.

The original application explained, "The proposed site includes the fortifications, Jamestown, colonial houses and the island's unique varied habitats and spectacular scenery." Also mentioned is "The abolition of slavery in the empire led to the establishment of an Admiralty Court on St Helena; close to 30,000 slaves were freed and their captors put to trial." The global significance of the Liberated African burial grounds in Rupert's Valley and the East India Company legacy is emphasised, "physical inaccessibility has contributed to the remarkable preservation of the island's historic monuments, many of which possess the sense of having just been abandoned. The island's significant role in the fight to end global slavery is another important aspect of its universal significance, linking it closely to Africa and the New World." The Napoleonic legacy is also included.

Henderson Island (1988) in the Pitcairn group and Gough (1995) and Inaccessible Islands (2004) in the Tristan archipelago are designated Natural World Heritage Sites. All three are uninhabited and remain largely undisturbed by humans. The remains of the ancient city of Kourion (1980) in Akrotiri, Cyprus, the town of St George in Bermuda (2000) and the Gorham Caves (2016) in Gibraltar are designated cultural sites for their outstanding cultural heritage.

The ancient city of Kourion located within the boundary of the British Sovereign Base of Akrotiri in Cyprus is the responsibility of Cyprus not the Overseas Territory. Kourion was the first of the five World Heritage Sites to be designated by UNESCO, forty years ago. The most recent being the Gorham Caves in Gibraltar which were inhabited by Neanderthals over a span of 100,000 years. The engravings within the caves are more than 39,000 years old. The archaeological finds in the caves have transformed modern interpretations of Neanderthals; a human species that preceded our own.

St Helena and World Heritage Sites

While five of the fourteen British Overseas Territories have succeeded in applying for UNESCO World Heritage Site des-

St Helena World Heritage Sites – Can We Get the African Burial Grounds Included

After covering the cultural aspects for possible World Heritage designation the original application for inclusion on the Tentative List turns attention to possible natural designation. "Saint Helena is repository to some of the world's rarest biodiversity, including species that have been dramatically rediscovered in recent decades. It is an outdoor museum which retains the unique evolutionary characteristics that led Darwin to deem it without parallel in the natural world".

After outlining the wide variety of reasons St Helena should be designated as an island with world class heritage the application then requires reasons, according to stated criteria, why the application merits designation as a heritage site of Outstanding Universal Value. On the cultural side the criteria chosen was "to be directly or tangibly associated with events or living traditions, with ideas, or with beliefs, with artistic and literary works of outstanding universal significance" The East India Company, Napoleonic and Liberated African heritage are given as evidence of tangible association with events and beliefs.

The natural criteria chosen was "to contain the most important and significant natural habitats for in-situ conservation of biological diversity, including those containing threatened species of outstanding universal value from the point of view of science or conservation". The description supporting this criterion includes, "Yet due to habitat loss much of this extraordinary biodiversity is now restricted to a handful of fragments, with a high proportion extremely endangered and species only kept from extinction by continued conservation effort."

The list of World Heritage Sites includes more than fifty which are classified and 'in danger' This classification means, "a list of the property appearing in the World Heritage List for the conservation of which major operations are necessary and for which assistance has been requested under this Convention. This list shall contain an estimate of the cost of such operations." After ten years one bit will have to be rethought, "A long sea journey is the only way to access to Saint Helena, as it was at the time of the island's discovery in 1502."

Getting Built Heritage and Cultural Sites Back for Consideration

This week a statement to Saint FM from the World Heritage Steering Group explained that early in 2019 a Scoping Group was established during Governor Lisa Honan's time. It was admitted that "focus waned" after the successful Tentative Listing in 2012 and there was a risk of St Helena's listing falling out of time after seven years on no action and no progress. In January this year an update on the Tentative Listing and next steps was presented to Exco together with a big bundle of information.

The proposal is for a World Heritage Steering Committee (not Group) to lead the next phase of the application process which will need to either follow the acceptance for Tentative Listing of the natural criteria, to the exclusion of the cultural criteria.

The East India, Napoleonic and Liberated African heritage was incomprehensively discounted by the Panel which assessed the St Helena application in the UK. The report to Exco in January recognises that bringing the cultural criteria back into consideration will mean "St Helena would need to carry out further investigation of its cultural values to broaden the criteria for full nomination." One important point is that the Liberated African burial grounds in Rupert's Valley are now more widely recognised than they were seven or ten years ago as having unique and distinguished global significance and need the highest degree of protection.



Bank's Battery – One of many East India Company Fortifications of Outstanding Value

COMMUNITY & DISTRICT ROADS GRANTS 2020/2021

The Infrastructure & Transport Directorate would like to advise the public that limited funding for Community and District Roads is now available.

Every successful application may receive a grant of up to £2,500 for raw materials. Residents will be responsible for arranging the spreading of materials and the necessary works.

The Environment & Natural Resources Committee has decided that due to the limited funding, priority for grants will be given to vulnerable and disabled persons in our community to improve access to their homes. Therefore, it is essential that any applications in this respect are supported by a certificate from the Occupational Therapist or a Medical Officer confirming the level of disability.

Application forms can be collected from Essex House, Jamestown, and should be completed and returned by noon on Friday, 25 September 2020. All applications received at that time will then be assessed, scored and prioritised accordingly.

SHG

7 August 2020



**St Helena
Government**



Tel: [+290] 22327
Email: independent@helanta.co.sh
<http://www.saint.fm>

Editorial

There are times when I can get a bit too excited, well, irritable is probably more accurate. This mostly happens when some individual or institution refuses to understand or acknowledge something I think is blindingly obvious. I got irritable this week when, yet again, some unknown, faceless government officer hiding in a dark and secret corner refuses to recognise the vital importance and benefits of using the development control system in the proper way. The story behind all this is covered in this edition of the *Independent* so I will not repeat it all here. The problem is, unwillingness to take a little time to understand the purpose and benefits of proper planning is plague which affects the UK Government too.

This month the UK Government have published a consultation paper called Accelerated Planning. It is thought, wrongly for the most part, that the planning system holds up building development and, in turn, economic development. I will explain.

The white paper has a foreword written by the UK Prime Minister in full Trump copy-cat mode. The consultation paper is called Planning for the Future and the Foreword from the Prime Minister tells us, "Thanks to our planning system, we have nowhere near enough homes in the right places. People cannot afford to move to where their talents can be matched with opportunity. Businesses cannot afford to grow and create jobs. The whole thing is beginning to crumble and the time has come to do what too many have for too long lacked the courage to do – tear it down and start again." He continues in his own inimitable, exaggerated way, "One that is simpler, clearer and quicker to navigate, delivering results in weeks and months rather than years and decades."

Media reports on the proposed changes point out the UK Government wants to simplify the planning system, put truckloads of cash into infrastructure improvement schemes and reach the target of 300,000 newly built homes every year in a few years time. People more informed than the UK prime minister point to a recent study which found that among all the UK property developers there are 475,647 homes with planning permission that are yet to be built and this number is more than three times the number of homes built in the UK last year. In the past there have been accusations that property developers drag their feet in the race to build more much needed housing because they do not want to see house prices drop as the demand from home-buyers starts to be met by increased house building.

In the UK the target for deciding planning applications varies from 8 weeks to 26 weeks, depending on the scale and complexity of the development. The UK Government's own statistics show the majority of local councils process planning applications within the time limit. Johnson does have the

results in weeks and months already, rather than years and decades. That man does get carried away with himself – he must learn to calm down.

The Financial Times points out that local councils will need to enforce any new standards set for design and build quality as well as inspect any larger number of house completions that may be achieved. This will be somewhere between very difficult and impossible as spending on the English planning system has been cut by 55% since 2010 while housing targets have already increased by 50% over the same period. The conclusion is, in the poorest areas of England the new housing developments will be ready-made slums.

The Falklands is in the news again with a report that a team of scientists from Aberdeen University will be heading to the Falklands next year on a £230,000 project to examine the effects of peat lands which are now burning more frequently because of climate change. Further pollution is likely because of the increased peat fires. Peat will normally store carbon when it is not burning. It seems a damaging vicious circle is developing in the 3% of the world's land area which is peat land.

A doubtful little Falklands story appeared in the UK Daily Express newspaper. We all know the story about Jonah who survived three days in the belly of a whale before being coughed up and spat out by the whale. It is said there was a certain James Bartley who, in 1891 was swallowed by a sperm whale and then rescued two days later by his fellow fishermen near the Falkland Islands. The story is the fishermen skinned the whale and found an unconscious James Bartley inside it – he survived. Marine scientists are sure this story carries with it a good measure of Boris Johnson's weakness for exaggeration.

Another media story I would take to be silly exaggeration appeared this week, except it involved Trump so it is probably true. The shower head in the White House shower which Trump uses does not have a fast enough flow to suit the fiddly expectations of Mr President. He started moaning about it so government officials started preparing to make changes to a 1992 law which specifies water saving limits for flows through shower heads. A representative of an energy saving conservation group pointed out there are many different types of shower head and "If the president needs help finding a good shower, we can point him to some great consumer websites that help you identify a good showerhead that provides a dense soak and a good shower,"

Happy Weekend
Vince



St Helena
Government

- Titan Airways has been commissioned to undertake four further flights between the United Kingdom and St Helena

- The next charter flight is expected in the week beginning 14 September 2020

- Frequently Asked Questions issued on travel requests, fares, and quarantine requirements

ADDITIONAL CHARTER FLIGHTS

St Helena Government is pleased to advise that Titan Airways has been commissioned to undertake four further flights between the United Kingdom (UK) and St Helena.

The current target dates for the flights to depart the UK are:

- the week beginning 14 September 2020
- the week beginning 26 October 2020
- the week beginning 30 November 2020
- the week beginning 11 January 2021

The proposed route for each flight is as follows:

Day 1	UK (London Stansted) – Las Palmas (technical stop only) – Ascension Island
Day 2	Ascension Island – St Helena – Ascension Island
Day 3	Ascension Island – Las Palmas (technical stop only) – UK (London Stansted)

The technical stops en-route are provisional at this time. Passengers should also note that the flight will only call at Ascension Island when there is sufficient passenger demand. The flight route between London and St Helena is therefore subject to change.

Passengers considering travelling on the flight expected in the week beginning 14 September 2020 are asked to register their interest by **9am on Tuesday, 18 August 2020**. This strict early deadline is necessary to arrange the aircraft and flight arrangements. Late requests will only be considered on an exceptional basis.

For those based on St Helena, please register your name with the Tourist Office by contacting: christina.plato@tourism.co.sh or calling + (290) 22158. For those based on Ascension Island, please register your interest through the Shipping and Travel Office by contacting: kitty.george@ascension.gov.ac or by calling + (247) 66244. Interest in subsequent flights should also be registered through the same channels.

Availability of both inbound and outbound seats on the flights will be assigned on a priority basis as per the previous repatriation flights. The passenger capacity of the flights is not yet known and will be dependent on passenger demand and the chosen aircraft type. The number of passengers arriving to St Helena is limited by the capacity at Bradley's Camp for as long as the mandatory 14 day quarantine arrangements continue.

Continue to page two ...

FAQs

Below are common questions received and answers provided on future travel arrangements to and from St Helena:

Travel Requests

Who can travel on the flight?

Travel requests will be prioritised against a reasons-for-travel criteria (for example, persons needing to return to their country of normal residence or persons needing to travel on medical grounds will typically be given higher seating priority).

I am normally resident on St Helena, can I travel off-Island for leave/temporary break?

All requests will be accommodated where possible but please be advised that travel for leave or non-essential purposes will be given a lower priority for seat allocation.

Those considering travelling must take into consideration that quarantine measures are currently mandatory in some countries. It is important to note that under the current legislation, upon return all persons arriving to St Helena will be subject to 14 days quarantine at Bradley's Camp.

Who is the point of contact for registering interest to travel to and from St Helena Island?

All persons interested in returning to or leaving St Helena should register their name with the Tourist Office by contacting: christina.plato@tourism.co.sh or calling + (290) 22158. For those based on Ascension Island, please register your interest through the Shipping and Travel Office by contacting: kitty.george@ascension.gov.ac or by calling + (247) 66244.

You will be asked to provide your full name, address, date of birth, nationality, passport details, contact details, the country you wish to travel to, proposed dates for travel, and reason for travel.

If you are travelling as part of a group, please provide these details for each person in the group. You should also identify which member of the group will serve as the point of contact.

Once registered on the list, persons will be kept updated via the contact details provided.

I have already registered on the travel list. Must I register again?

If you have already registered, it is now important that you confirm that you still wish to travel and your proposed dates of travel. Please contact the Tourist Office to update your travel request.

Can I only register for the next flight?

If you are interested in travelling on the flight in the week beginning 14 September 2020, please register your interest with the Tourist Office by **9am on Tuesday, 18 August 2020**.

It is also possible to register interest to travel on the remaining three flights. We encourage anyone considering travel to/from St Helena in the period up to January 2021 to submit their travel request at the earliest opportunity.

This information will greatly assist planning for future flights.

Who makes the decision on who is prioritised to have a seat on the flight?

The criteria used for prioritisation were developed during the recent repatriation flights. These will be

Continue to page three ...

applied by an SHG working group including at least one Elected Member. Once the prioritisation exercise is complete, all persons who have registered with the Tourist Office will be contacted to advise them of the outcome.

What can I expect if I am offered a seat on the flight?

A flight information pack will be issued prior to the travel date to those offered seats. This will detail the payment process, what to expect at the outbound and inbound airport, what to expect on the aircraft and quarantine arrangements.

Fares

How much will a ticket cost?

For the flight expected during the week commencing 14 September 2020, the cost of an adult fare on the flight will be:

UK – St Helena	£950
St Helena – UK	£950
UK – Ascension	£800
Ascension – UK	£800
Ascension – St Helena	£450
St Helena – Ascension	£450

All persons aged 12 years or older will be charged at the adult fare rate. Children between the ages of two and 11 years will be entitled to a 10% discount. Children aged younger than two years will be entitled to a 90% discount.

The above fares are now fixed for the September flight and are indicative for the remaining three flights. The final agreed fares for the subsequent flights will be published nearer the time.

Quarantine Requirements

Will the quarantine arrangements at Bradleys still be in place up until January 2021?

Persons planning to travel to St Helena in the period up to January 2021 should plan on the basis that the current quarantine requirements will remain in place. This will require arrivals to St Helena to quarantine at Bradleys for 14 days.

SHG will provide further updates should there be any changes.

Is there a cost associated with quarantine on St Helena?

SHG will charge for the quarantine facilities at Bradley's Camp to ensure that at least some contribution can be made by travelers to recover costs and to mitigate the impact on the public finances of St Helena.

Further information is available via the Quarantine Facility Charging Policy which sets out the charges for the use of quarantine facilities on St Helena during the Coronavirus (COVID-19) pandemic. The Policy is now available on the SHG website at: <https://www.sainthelena.gov.sh/government/public-information>. The policy is subject to regular review.

Continue to page four ...

Will I be required to quarantine on Ascension Island?

All arrivals at Ascension Island are required to isolate for 14 days following arrival.

Persons in transit on the flights (either inbound to St Helena or outbound to the UK) will be required to quarantine at Ascension Island for the duration of their stay. This is expected to be for less than 24 hours (the flights are expected to arrive in the late afternoon and depart early the following morning).

Will I be required to quarantine on arrival in the UK?

All travellers from St Helena and Ascension are not required to self-quarantine on arrival in the UK. Further information is available via: <https://www.gov.uk/uk-border-control>.

SHG will provide further updates should there be any changes.

Longer-term Planning

When will the Airlink normal scheduled service between South Africa, St Helena and Ascension resume?

South African authorities are not permitting scheduled international flights to resume until the country moves to at least lockdown level 1. It is not known when South Africa will move to level 1 but this is not expected within the next three months. Airlink are therefore only permitted to operate limited domestic (within South Africa) flights at present. Airlink will not be permitted to operate scheduled international flights to and from St Helena until South Africa moves to level 1.

For general enquiries and more information, please contact Airlink Customer Care via: customercare@flyairlink.com or call +27 11 451 7300.

I have booked flights with Airlink and my travel date is fast approaching. Should I cancel my plans?

Airlink will not be permitted to operate scheduled international flights to and from St Helena until South Africa moves to level 1. It is not currently known when South Africa will move to level 1 but this is not expected within the next three months.

As the date of your flight approaches, should there be a need to cancel this flight, Airlink will contact you via the information you provided in your booking. Alternatively, information is available via: www.flyairlink.com.

For general enquiries and more information, please visit: <https://www.flyairlink.com/important-info/covidmemo> or contact Airlink Customer Care via: customercare@flyairlink.com or call +27 11 451 7300.

Other

Will there be opportunities for the flights to carry airfreight?

Yes, there will be opportunities for airfreight. Further details will be published during the week commencing 10 August 2020. In the meantime, organisations interested in using the airfreight service can register their interest with the SHG Airport Directorate by contacting: tessa.roberts@sainthelena.gov.sh or calling + (290) 22721.

#StHelena #CharterFlight

SHG, 7 August 2020

Four Charter Flights Scheduled Through to January

Another charter flight has been announced for mid-September – just a month away. Planned for the week beginning 14th September from London (Stansted) Airport with a technical stop in Las Palmas, and a call at Ascension before arriving St Helena.

For people thinking of using the September flight the deadline for registering an interest – not to make a confirmed booking – is just a week away. The deadline for registering your interest is just a few days away - 9am on Tuesday 18th August. Contact on email christina.plato@tourism.co.sh or phone 22158. Have your passport details ready.

People on Ascension should contact Kitty George. The call at Ascension depends on a sufficient number of passengers registering an interest and then confirming a booking.

All four charters are planned for the same route. The second charter will leave the UK towards the end of October and the next one between 30th November and then 6th December. This is likely to be the only Christmas flight with Christmas visitors departing on St Helena on the last of the four charters during week beginning 11th January.

You can register your interest for any of the other three charter flights now.

The passenger fares are confirmed for the September flight only, but the fares on the following three flights are expected to be similar. For travel from the UK to St Helena or St Helena to the UK the fare is £950 for passengers 12 years old and more. Children between 2 and 11 year get a 10% discount on the adult fare and children aged less than 2 years pay 10% of the Adult fare.

People travelling to St Helena should expect the quarantine regulations to be in force for all four charter flights and plan for a 14 day stay at Bradleys Camp together with the accommodation charge involved. Arrivals at Ascension Island will also be required to quarantine for 14 days.

Passengers from St Helena and Ascension travelling to the UK will not be required to quarantine upon arrival in the UK. The usual weekly Airlink flights are not expected to start operating for at least the next three months.

Exco shelf decision on controversial Rupert's Development

Exco met on Tuesday to make a decision on the Rupert's development which includes container handling areas, office buildings, secure areas and car parking. It was the only item in the open session of the meeting. A decision was deferred for two weeks because more information is required. The Exco meeting was a re-run of two Land Development Control Authority meetings which discussed the same development application. The same issues were questioned and these same issues received unsatisfactory responses. Treatment of the boundary of an historic site, the extent of the damage caused by the leak in a fuel pipeline and the details on reasons why an Environmental Impact Assessment was judged not to be necessary. Exco decided that because this rel-

evant and important information was not provided a decision would have to wait until the information required was provided.

The Heritage Society and the National Trust together with three individuals have raised objections to this development application. Enterprise St Helena registered their support and SHG's Environmental Management did not respond to the invitation to comment. Eight other government departments either did not respond or responded saying they had no objections.

Objections include the development of Rupert's in a piecemeal manner, with no stated plans for improvements to Field Road and Side Path to show that the route from Rupert's to Jamestown will be sufficiently safe to accommodate the additional heavy traffic. Also mentioned was the restricted access to Rupert's Beach, inadequate indication of the plans for warehousing and no mention of how historic sites will be incorporated into the overall plan.

The Chief Officer's Report recognises there are listed buildings within and adjoining the proposed development area but claims the proposed container storage areas and new buildings will have no impact on the historic buildings and structures or their settings. However this claim is not supported by several interested parties. The recent fuel leak has raised questions which, in the opinion of many, have still not been satisfactorily resolved. Responsibility for investigating the extent of the fuel leak and removing contamination has been put on the shoulders of the construction company that wins the contract for the development. The inadequate justification of the claim that the environmental impacts arising from putting large and wide areas under concrete are insignificant is probably the most serious insufficiently explained aspect of the development.

The Land Development Control Authority who can only make a recommendation to Exco on large developments has been keeping a close eye on Exco's discussion and forthcoming decision and will consider taking the matter to judicial review if they consider the processes set out in law have not been followed.

Falklands Government doubles the number of Permanent Residential Permits

The Falklands Government is targeting an annual 3% increase in the Island's population. To help achieve this target they have doubled the number of permanent residence permits which can be awarded each year to 90. They will also make decisions on residence permits on a monthly basis, instead of quarterly, to smooth out the application procedure. The number of Falkland residential permits issued has almost doubled over the last three or four years. The points system for residential permits is likely to change shortly to award more points to families with young children who apply for permanent residence. In the last nine years the Falkland Government have issued 144 permanent residence permits to British nationals, including Saints, 76 to Chileans, 39 to Filipinos and 17 to Zimbabweans.

Exactly When and How do we Start Tourism Again?

'Exactly' has always been a word which should be used with extreme caution, especially when trying to guess what is going to happen in the future. With the coronavirus pandemic rampaging across the world and back again it seems the only thing we can be certain about is the time the Sun will rise and set each day, which continues with predictability and precision no matter what happens here on Earth.

Everyone, everywhere, wants life to get back as soon as possible to something which is at least a bit like we are used to. All countries want to introduce measures aimed at slowing down and hopefully reversing the steep drop in trade which has bedevilled every nation for the last five months, including us in St Helena.

As many 'experts' love to remind us, now is the time to think new thoughts, be flexible and nimble footed, try something new but be prepared to back-track at a moment's notice if things do not work out. Make decisions and be prepared to un-make them, keep just about everything under constant review. The reason for this kind of approach is obvious to most and cannot be argued against with any conviction. We have to make something happen somewhere if we want to move a little way towards the kind of life we are used to; doing nothing means St Helena and rest of the world will be well and truly flushed down the toilet instead of just be stuck in a stinky swamp – which is where we are now.

The first thought that occurs to many, especially those in business, is tourism when trying to figure out a way back to how life was before March this year. How do we get people coming here to spend money? How can we get them here? When is the best time to start? The biggest obstacle to bringing back tourists is the 14 day quarantine in Bradley's Camp. The quarantine cannot be avoided; but can it? The governments in Guernsey and the Isle of Man have agreed to flights between the two islands operating twice a week; these flights have been in operation for about one month and will continue to 13th September. Since setting the original inter-island airbridge schedule four extra flights have been added for August weekends. Passenger demand has been good but a decision on extending the schedule further into the northern hemisphere winter months will wait until September. The special thing about these two islands is they are now Covid-19 free and have been for some time. Booking a ticket and boarding the plane is as it was in the good old days, five long months ago. More important, getting off the plane and going through immigration checks is also just as it used be. Leaving the airport means getting a taxi to the hotel, no quarantine involved. The population of Guernsey is 174,000 and Isle of Man is 84,000. Between them they have enough people who desperately want to travel to keep the airbridge flights popular. Can anything like that work for St Helena?

The UK Government have created what they call travel corridors. For travel directly to and from any of the countries on the travel corridor list published by HMG there is no requirement to quarantine when returning the UK. St Helena is on that list, also the Channel Islands, Cyprus, France, Gibraltar, Germany, Greece, Ireland, Isle of Man, Italy, Holland and many others. Which of the countries in the UK travel corridors are



good for picking up tourists who want to come to St Helena? Could next year's charter flights include countries where the coronavirus threat has significantly reduced to next to nothing? In what circumstances is the St Helena population prepared to see tourists return without having to quarantine for 14 days? When will a Covid test at the start and end of the journey be enough; no quarantine required?

What appears to be the safest way to do it at the moment is for the Titan Airways charter plane to pick up most of its passengers in Guernsey. For St Helena bound tourists boarding the plane at Guernsey, Covid-19 requirements should be the same as for passengers travelling between Guernsey and the Isle of Man. There are many technical things to consider as well as the coronavirus related medical aspects. The local Guernsey airline has recently brought into service an Embraer E195 so maybe the local airport can accept the type of plane needed for flights to St Helena.



Aurigny Airlines had to put its newest and biggest passenger plane on the Isle of Man route to cope with demand, soon after the airbridge service was announced.

It's an Embraer E195

There are probably other 'tourist-friendly' options that can be considered and in the fast-changing pandemic world some possibilities suddenly become improbable while changing circumstances open other opportunities. There are doubtless many details to sort out. We have a charter schedule up to January. Can any charters arranged for February, March or April be used to test the market for tourists? May next year was looked forward to as the biggest tourism attraction of the century – Napoleon's bi-centenary. How many of us hope it is still not too late to try and make something of this event? Come next year, will we find further charter flights from the UK more acceptable than the usual scheduled flights from Johannesburg even if the Airlink flights are able to operate once more? Will the UK's Foreign, Commonwealth and Development Office still be prepared to subsidise the charter flights if the Airlink flights are able to start again? This week, official figures were published showing the UK economy shrank by 20.4% between April and June.

The massive financial crisis in 2008 now looks like a minor dip compared to the effect of the Covid pandemic on the UK economy

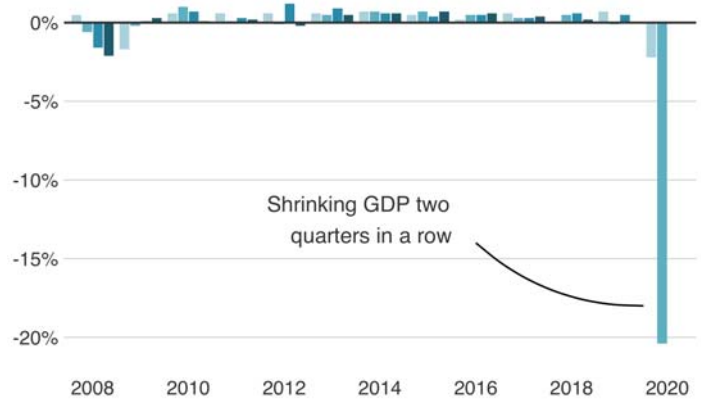
The UK Overseas Development Aid budget has already been cut by 18.35%. A further cut can be expected if the UK economy does not turn around quickly. Continued bad news about the UK economy means we can expect less and less in handouts from the UK Government. We should make the most of the UK flights while we still have them.

The UK Overseas Development Aid budget has already been cut by 18.35%. A further cut can be expected if the UK economy does not turn around quickly. Continued bad news about the UK economy means we can expect less and less in handouts from the UK Government. We should make the most of the UK flights while we still have them.

RIGHT: The massive financial crisis in 2008 now looks like a minor dip compared to the effect of the Covid pandemic on the UK economy

UK officially in recession

GDP, % change on previous quarter



Source: Office for National Statistics

BBC

More Peculiar Effects of the Rupert's Wharf Project - Opinion

Mike Olsson

I have not followed the plans for the Wharf Development Project in Rupert's all that well but after doing some reading up, I attended the Executive Council Meeting on Tuesday where the planning application for the first phase of the project.

I was surprised that nobody has come up with any good ideas about how the Wharf and Customs could be improved in the future. What is being done is that we shift an inefficient handling of goods from Jamestown to Rupert's and make it a bigger problem.

My point is not a planning issue but it would affect the planning as we would need a much smaller space for the secure wharf.

Most of the buildings and vast areas which will be used are not really needed for the wharf itself. The multimillion pound investment allocated for the project is mainly to accommodate the traders operating in, or around, the wharf with goods which have not been cleared by Customs. The system we are using now, and appear to be using in the future is costing the Island and DfID millions to run.

What we actually need is one building with a warehouse in the bottom and offices for customs and harbour personnel on top. There is also need a concrete slab for some containers, mainly empty, that's it.

All goods leaving the wharf have to be cleared in advance by the importer or consolidator (let's call them Approved Importers) and the containers immediately leaving the Wharf area go straight to the Approved Importer's premises or un-stuffing area. We cannot have an efficient Wharf and Customs operation where 100's of people or more individually coming into the Wharf Area to pick up and clear customs for their T-Shirt from Argos. What Customs is doing is to make random checks

that the containers, or break-bulk, corresponds with the documentation. Smuggling is not likely as the Approved investor will lose his status if he/she gets caught.

For the last 10-15 years the so called Wharf Trading has escalated to a tremendous business which is excellent for the owners of those businesses but it has increased the cost for the Wharf and Customs by millions.

The logistics of the Wharf project is also dubious. We will have 100's of private cars, dozens of trucks and other vehicles coming down to fetch their good, including T-shirts from Argos.

What it comes down to in essence, wharf traders have to clear the goods they bring to the Island and take it to their premises wherever that may be. It is not a SHG/DfID matter to provide the infrastructure and Custom's time to enable their business.

I know that my suggestion might not be popular but we cannot have a Government that is providing business premises for some business whilst the traditional wholesale and retail businesses have to provide for themselves.

Vince Thompson wrote an article at the time the 2016 Rupert's Development Plan was being formed about an 'inland port', maybe along the haul road. This would be a good solution. As the goods are already cleared, it will not need to be close to customs. At the inland port approved importers can rent an area to un-stuff the containers and deliver their goods to their customers.

These simple measures would improve safety and security at the wharf and save SHG a lot of money, both in investment and running costs. Customs officers are customs officers and not shop attendants.

Word Heritage sites: Question asked and answered in the House of Lords on Monday last week



Lord Blencathra Chair, Delegated Powers and Regulatory Reform Committee, Delegated Powers and Regulatory Reform Committee

To ask Her Majesty's Government what progress has been made with regard to the applications for World Heritage Status for (1) Chatham Dockyard and its Defences, (2) Creswell Crags, (3) Darwin's Landscape Laboratory, (4) Flow Country, (5) Great Spas of Europe, (6) Island of St Helena, (7) Mousa, Old Scatness and Jarlshof: the Zenith of Iron Age Shetland, (8) Slate Industry of North Wales, (9) The Twin Monastery of Wearmouth Jarrow, and (10) Turks and Caicos Islands.



Baroness Barran The Parliamentary Under-Secretary of State for Digital, Culture, Media and Sport

UNESCO World Heritage inscription is recognition that a cultural or natural site is of Outstanding Universal Value to humanity. As such, the process for achieving this status is highly rigorous. Each State Party to the World Heritage Convention is responsible for maintaining a tentative list of sites from which nominations may be developed.

The sites mentioned in this question are all on the UK's current tentative list. As each country may only nominate a maximum of one site per year from this list, the UK government will only submit nominations which clearly demonstrate that a site meets the criteria, authenticity, integrity and management required. In January 2020, the Government nominated the Slate Landscape of Northwest Wales to UNESCO for potential inscription in 2021. The Great Spas of Europe, which includes Bath, was nominated in 2019 alongside 11 other spa towns throughout Europe and will be considered for inscription at the next World Heritage Committee meeting. Additionally, the Flow Country has passed a UK expert evaluation, and now may proceed to develop a nomination. Other sites on this list are at earlier stages in the process, or have determined that they do not intend to move forward with the development of a nomination at this stage.

This week on St Helena: the director of tourism, Helena Bennett said:

"St Helena's unique natural and cultural heritage has long been recognised as being outstanding, and this was reinforced when St Helena was successful in its application to the UK's Tentative List of World Heritage Sites in 2012. Securing this nomination to the Tentative List is the essential first step in the process towards submitting a full nomination to United Nations Educational, Scientific and Cultural Organization

(UNESCO) for designation as a World Heritage Site (WHS). Significant effort contributed to the successful Tentative Listing, this included securing St Helena Government support and commitment to support the process (Tourism Development Plan, 2012-2016) and underpinning management framework (the Historic Environment Record and Conservation Management Plan as set out in the Land Development Control Plan (LDCP) 2012); support from the French Government was also expressed. Despite this initial success, focus waned, so, whilst important foundations were laid, little real activity to progress from Tentative List to full application took place after 2012 until more recently when public interest was expressed. Early in 2019, a small Scoping Group was established by former Governor Lisa Honan. Questions raised by the Hon. Christine Scipio highlighted the public interest in what action had been taken, and the risk of St Helena's listing falling 'out of time'. The purpose of the group was to review St Helena's current position in relation the Island's 2012 UK Tentative Listing for World Heritage Status. Available information and knowledge was collected and experts on the Island's nature, culture and heritage were consulted, about St Helena's current potential Outstanding Universal Value (OUV) – the measure which determines whether or not a site meets the WHS requirements, and to identify the options now available to the Island. A Position Statement in relation to potential for progressing a full WHS application was presented to ExCo in January 2020. Further information was requested in order for ExCo to form an opinion on whether, or not to proceed to the next stage which would be a feasibility study, and this information is currently being prepared for submission to ExCo. It was not the purpose of the Group to answer the question of whether or not a full application should be made, that is for the community to consider what the best option is, when there is more information available about the type of bid and what the likely social, environmental and economic benefits and dis-benefits will look like. So far, broad interest from local experts and Councillors have been expressed to know more about the implications for St Helena in developing a full bid. It is proposed that a community-led World Heritage Steering Committee will lead the next phase. Further information will be shared when it is available"

PROPERTY FOR SALE IN HALF TREE HOLLOW

For sale is a freehold Property, registration section H.T.H. Parcel 201 with land acreage of 0.576, including a stone building comprising of 5 rooms including bathroom & toilet. Water, electricity and sewage already installed.

The asking price is £60,000 or near offer.

Interests to Anne & Gerald George Telephone
23580

NOTICE OF ENVIRONMENTAL IMPACT ASSESSMENT FOR A SPACE PARK AT HORSE POINT

The public is hereby notified that in terms of the Land Planning and Development Control Ordinance, 2013, an environmental impact assessment (EIA) is being undertaken for the development of a Space Park for the location of satellite earth stations at Horse Point.

With the landing of the sub-sea fibre-optic Equiano cable on St Helena in the third quarter of 2021, it will open up the possibility of hosting satellite earth stations on St Helena. The location of St Helena in the mid-Atlantic provides a number of advantages for satellite telemetry due to its position near the equator, its remote location, weather conditions, political stability and security. By hosting Earth Stations in St Helena, we can increase the Island's use of the fibre-optic cable capacity and spread the costs of internet connectivity more widely.

An earth station is a terrestrial radio station designed for extra-planetary telecommunication with spacecraft or reception of radio waves from astronomical radio sources. Earth stations communicate with spacecraft by transmitting and receiving radio waves in the super high frequency or extremely high frequency bands (e.g., microwaves). A principal telecommunications device of the ground station is the parabolic antenna.

Given the Island's rugged topography and land availability the number of suitable sites with a favourable north and south horizon mask is limited (www.earthstation.sh). Consideration also needs to be given to visual amenity, endemic fauna and flora and existing land use. The Space Park also needs a relatively flat piece of land for the deployment of the antennae and the land should not be under current productive use. One of the sites selected for the first of possibly two Space Parks is at Horse Point. The first phase of the proposed Space Park at Horse Point will comprise seventeen 3.5 m diameter antennae, set out in three lines 50 m apart with each antenna situated 45 m from each other along each line. The land between the antennae, with the exception of pathways, will not be disturbed. Depending on the business case, there may be a second phase expansion with the installation of three 7.6 m diameter satellite dishes on the same site.

The EIA, being undertaken by Bryony Walmsley and Associates, will follow the prescribed process set out in the EIA Regulations. One of the key principles of the EIA process is that the issues and concerns of the public should be obtained as part of the impact identification phase. Any comments or concerns from the public may therefore be addressed to Ms Annina van Neel via the following:

Email: advanneel@gmail.com

Phone: 00290 23698/ 00290 64134

THE DEADLINE FOR SUBMISSIONS IS 28 August 2020.

Equality & Human Rights Commission

Press Release



Inquiry update statement

In a recent press release the EHRC outlined its intention to carry out an Inquiry initiated into the Standing Orders of Legislative Council. We'd like to take the opportunity to provide the public an update on this matter. As a result of comprehensive desk based investigation and engagement with St Helena Government, the Attorney General's office, Elected Members and our overseas counterparts, we have decided an inquiry would not effectively meet the most urgent concerns of the public.

The process has now progressed to more practical avenues of assessment and collaboration with the relevant parties.

Our initial investigations revealed a much broader review of the state of democracy on St Helena is required. Over the next few months there will be changes to our Constitution, a Public Access to SHG Information Bill, the Communications Networks and Services Policy which will all have implications for human rights. These areas will be our focus for the next few months. Public consultation will take place in the form of a survey and we would like to hear your views. Information on the survey and how you can get your views heard will be in next week's newspaper and on line.

There has been tremendous support from both the public and the interested and affected parties. We will continue in our endeavour to support and bolster the island's human rights.

NOTICE OF ANNUAL GENERAL MEETING

St Helena Heritage Society Ltd
Tuesday 1st September 2020

Museum of Saint Helena, Jamestown @ 7 pm

Agenda:

1. Welcome
2. Financial report
3. Museum Director's report
4. Elections
5. A presentation on Built Heritage
6. Any other business



Notice of Annual General Meeting of the St Helena Branch of the British Red Cross

To be held at
The Training Room,
Ladder Hill
7pm Tuesday 25th
August 2020

Natural Heritage: its's everyone's responsibility

Contributed by St Helena National Trust

Off-roading and littering

There has been a noticeable increase in the amount of litter accumulating along the road from Bottom Woods down to the Millennium Forest recently. The Millennium Forest is an award-winning conservation site and a community forest for the people of St Helena to take ownership off by taking part in habitat restoration, leisure activities and educational opportunities. Horse Point is an attractive location with stunning scenery which many people visit, especially on Sunday drives or public holidays; however, there has been considerable evidence of off-track driving in this area. Both of these sites are also regularly visited by tourists and are prominent locations that impact and influence travellers' first impressions when arriving on the island.

In addition, these sites are environmentally sensitive with Horse Point supporting a population of St Helena Plovers (aka Wirebird) which regularly nests in this area, as well as populations of many endemic invertebrates 'bugs' species. A consequence of off-road driving at Horse Point is the disturbance of habitat and destruction of these vulnerable and unique species. Please help to minimise negative environmental impacts by staying on the track, which will significantly lessen the damage caused to the environment. Litter is unsightly and also encourages disease carrying pests, harms good wildlife (terrestrial and marine) and causes soil contamination even just from the additives in plastics. Please help to prevent this from happening by taking your rubbish away with you or using the bin provided at the Millennium Forest, and ensuring that your rubbish is covered with a tarpaulin when transporting loads to the Landfill site. Littering in an environmentally sensitive area is an offence and is covered by law under the Environmental Protection Ordinance, 2016 (section 10, sub-section 75 and 76).

Appeal for return of stolen rabbit traps

There has been a common occurrence of theft of rabbit traps at the Millennium Forest. These rabbit traps are a part of a pest control programme to protect endemic habitat from being grazed by rabbits, which bark the trees and eat seedlings. Trapping programmes are costly to start-up and

equipment is expensive to replace. A new Darwin Plus project has recently been awarded to the National Trust focussing on control of mynahs, rats, cats and rabbits in both conservation and agricultural areas to provide benefits to the whole island. The successful delivery of this new project is under threat if these actions continue. It would be appreciated if the person/s responsible would kindly return these traps back to the Millennium Forest or if anyone sees these traps marked with SHNT please contact the National Trust Offices on 22190.



Harlequin Ladybirds seen at Millennium Forest

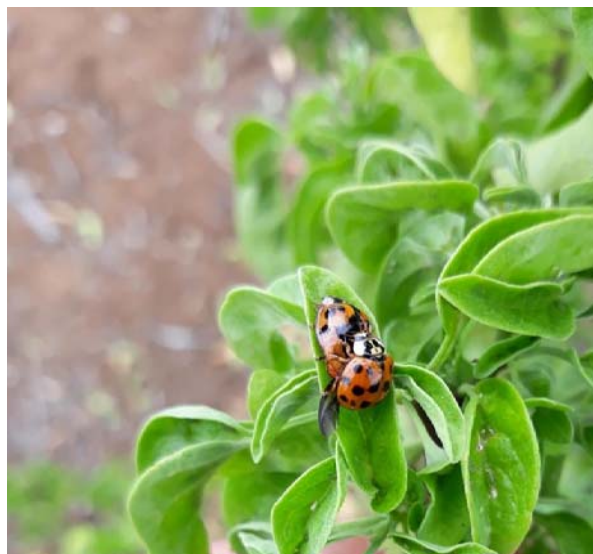
The Harlequin Ladybird (*Harmonia axyridis*) is an invasive pest species that out-competes our native species for aphid-prey, and also predate on other ladybird's eggs and larvae, which poses a threat to bio-control measures and other soft bodied insects (of which we have many endemic species), impacting on their populations.

They have black spots on a red or orange background, the head has an obvious white triangle in the centre and it is larger than the other species of ladybird. If you spot this ladybird please report it to Rosie Peters (SHG ANRD Pest Control) on 24724 or email:

rosalie.peters@sainthelena.gov.sh

Or the National Trust on 22224 or email:

liza.fowler@trust.org.sh





CUSTOMER SERVICE TERMINAL - STATION 5

Our Customer Service Terminal has officially opened at Station 5!

The Terminal opened on 10 August in the main Bank Hall in Jamestown and is the first stop for customers looking for assistance in the Bank.

What can customers expect from the Terminal?

Pick-up, Drop-off and Scanning Point

Application Forms, Local Debit Cards and more

Customers can now do all their pick-ups and drop-offs at the Terminal. Drop off forms including: account opening, packages and package amendment requests (e.g. replacing your debit card), cheque books, standing orders, changing account information, per pro, remittance and direct debit.

We understand some of these applications require 'Supporting Documentation', that is why we will also scan your documents at the Terminal to ensure your application is submitted with all documentation attached.

If you're expecting anything from the Bank, for example your Local Debit Card or Online Banking packs, they will be available to collect from the Terminal. You may collect the various forms as well.

Operations

In addition to dropping off applications and scanning documents, the Terminal will be available for checking account balances, printing statements and activating new accounts.

Lending

For our current and prospective clients, you can drop your application forms, ask any questions you may have regarding the forms and processes, check your loan balance and scan your insurance documents at the Terminal.

Can I still visit the Sections?

The Terminal will be the first point of contact for all customer enquiries and information, so if in doubt, make this your first stop. If you require additional support, you may be referred to the various sections.

If you have a scheduled appointment, you may go straight to reception.



**IF THE STATION IS AVAILABLE, COME STRAIGHT THROUGH!
NO NEED TO WAIT IN LINE.**

Head Office: Market Street • Jamestown • St Helena Island • STHL 1ZZ

T. +290 22390 • F. +290 22553 • email. info@sainthelenabank.com • web www.sainthelenabank.com

Established and regulated under the Financial Services Ordinance, 2008, the Financial Services Regulations, 2017 and the Company Ordinance, 2004



Bank of St. Helena Ltd.



@sainthelenabank



Bank of St Helena Ltd



Vacancies for a Plumber/Heating Engineer and an Electrician in the Falkland Islands

Electrician

Goodwin Ltd has a vacancy for an experienced Electrician to work within its construction team. Applicants must hold relevant electrical qualifications, for example City and Guilds 2365 Course Level 2&3 Diploma in Electrical Installation or equivalent qualifications as well as Electrical Inspection and Testing (2391) and IET 18th Edition Electrical Regulations. Applicants should have a minimum of 3yrs post qualification experience in inspection and testing on electrical systems and installations in a residential and commercial environment.

Plumber/Heating Engineer

Goodwin Ltd has a vacancy for an experienced Plumbing and Heating Engineer to work within its construction team. Applicants must hold relevant plumbing and heating qualifications to NVQ Level 2 or equivalent and have a minimum of 3yrs post qualification experience on 1st & 2nd fix domestic plumbing. Ideally applicants should hold OFTEC Boiler Servicing and Commissioning certification in relation to fuel tanks and jet burners. Gas Safe would also be a desirable qualification.

Applicants for both positions should be self-motivated with the ability to make decisions and resolve problems and have experience on residential and commercial properties.

For both positions a full driving license is essential.

Applicants must be able to work at heights and in confined spaces.

Must be physically fit and able to communicate clearly and effectively in English.
A working knowledge of PPE and Health and Safety practices are also required.

Salary will be dependent on the applicant's skills and previous experience.

For further information, a job description and an application form please contact Marcus Morrison, Project Manager on 22340 or Email: projectmanager@goodwin.co.fk

Closing date for applications is **Monday 24th August 2020.**

We are back to meeting your educational needs!

Community Education—Core IT Skills

COURSE TITLE		
European Computer Driving License IT: This programme defines the skills & competencies necessary to use a computer & its common applications. It offers a range of modules including computer essentials & IT security.	REGISTRATION PERIOD: 10 August – 28 August 2020	REGISTRATION PERIOD: 01 December – 18 December 2020
	START DATE: 10 September 2020	START DATE: 14 January 2021
	COST: FREE	COST: FREE

Community Education—Maths & English

COURSE TITLE		
Functional Skills Maths	REGISTRATION PERIOD: 10 August – 28 August 2020	REGISTRATION PERIOD: 01 December – 18 December 2020
	START DATE: 07 September 2020	START DATE: 11 January 2020
	COST: FREE	COST: FREE
Functional Skills English	REGISTRATION PERIOD: 10 August – 28 August 2020	REGISTRATION PERIOD: 01 December – 18 December 2020
	START DATE: 07 September 2020	START DATE: 11 January 2020
	COST: FREE	COST: FREE
GCSE Maths	REGISTRATION PERIOD: 10 August – 28 August 2020	REGISTRATION PERIOD: 11 January – 05 February 2020
	START DATE: 10 September 2020	START DATE: 04 March 2021
	COST: FREE	COST: FREE

St Helena Community College is also available for venue bookings.

Please contact our Administration Officer, Carley Peters on email carley.peters@sainthelena.gov.sh or shcc@sainthelena.gov.sh or you can call +290 22607

Cisco Networking Academy (IT)

COURSE TITLE		
Cybersecurity Essentials: Develop an understanding of cybercrime, security principles, technologies, & procedures used to defend networks. Recommend for students planning to study for the Cisco CCNA R&S, CCNA Cyber Ops or CCNA Security Certifications. Prerequisite: Introduction to cybersecurity or equivalent knowledge recommended.	REGISTRATION PERIOD: 10 August – 28 August 2020	REGISTRATION PERIOD: 01 December – 18 December 2020
	START DATE: 07 September 2020	START DATE: 11 January 2020
	COST: FREE	COST: FREE
Internet of things & analytics course: Join the transformation & improve outcomes in any industry by connecting devices & analysing data to find patterns	REGISTRATION PERIOD: 10 August – 28 August 2020	REGISTRATION PERIOD: 01 December – 18 December 2020
	START DATE: 07 September 2020	START DATE: 11 January 2020
	COST: FREE	COST: FREE
Linux OS & IT Get Connected: Whether you're a novice to the digital world or an aspiring SysAdmin or programmer, these courses will propel you forward. Advanced courses will also prepare you for the career-ready certification.	REGISTRATION PERIOD: 10 August – 28 August 2020	REGISTRATION PERIOD: 01 December – 18 December 2020
	START DATE: 07 September 2020	START DATE: 11 January 2020
	COST: FREE	COST: FREE
Introduction to Cybersecurity: An introductory course which explores cyber trends, threats-along with the broader topic of cyber security in a way that will matter to YOU. No prerequisites required.	REGISTRATION PERIOD: 10 August – 28 August 2020	REGISTRATION PERIOD: 01 December – 18 December 2020
	START DATE: 07 September 2020	START DATE: 11 January 2020
	COST: FREE	COST: FREE

Community Education—Personal & Cultural Learning

Course Title		
Emergency First Response—Care Of A Child	REGISTRATION PERIOD: 10 August – 28 August 2020	REGISTRATION PERIOD: 01 December – 18 December 2020
	START DATE: September 2020	START DATE: January 2020
	COST: £20.00	COST: £20.00

Continued on NEXT PAGE

Emergency First Response—Primary & Secondary Care	REGISTRATION PERIOD: 10 August – 28 August 2020	REGISTRATION PERIOD: 01 December – 18 December 2020
	START DATE: 07 September 2020	START DATE: 11 January 2020
	COST: £20.00	COST: £20.00
Manual Handling	REGISTRATION PERIOD: 10 August – 28 August 2020	REGISTRATION PERIOD: 01 December – 18 December 2020
	START DATE: 07 September 2020	START DATE: 11 January 2020
	COST: £10.00	COST: £10.00
Fire Safety	REGISTRATION PERIOD: 10 August – 28 August 2020	REGISTRATION PERIOD: 01 December – 18 December 2020
	START DATE: 07 September 2020	START DATE: 11 January 2020
	COST: £20.00	COST: £20.00
French Language	REGISTRATION PERIOD: 10 August – 28 August 2020	
	START DATE: 10 September 2020 (14 week Course)	
	COST: £20.00	

Enquires can be made for courses Level 3 & above.

For further information about St Helena Community College training opportunities, the registration process and/or to request a registration form please contact:

Carley Peters, Administration Officer, email: carley.peters@sainthelena.gov.sh

Alternatively you can call St Helena Community College (SHCC) on telephone number 22607 or visit SHCC in person; The St Helena Community College is based in Jamestown, just below Pilling Primary School at the Education Learning Centre.

St Helena Community College | Education & Employment Directorate | Market Street | Jamestown

St Helena Government | South Atlantic Ocean | STHL 1ZZ | Tel: +290 22607 | Email: shcc@sainthelena.gov.sh

Job Vacancy

Senior Network Technician, Ascension Island

Sure Ascension Island is part of the wider Sure Group delivering telecommunications to islands in the South Atlantic, Indian Ocean and Channel Islands. This is an exciting opportunity to work on a sub tropical island, leading a small dedicated networks team in the provision of telecommunication service. Responsibilities include leading and managing a small team and the day to day operations and maintenance of the core networks infrastructure, including but not limited to: telephone exchange (inclusive of mediation platforms and the interface to the billing system), transmission systems, Broadband distribution network/MSANs, 2G/4G mobile network, IMC, network management systems, and all associated power systems.

Qualifications and experience for this role: National Diploma in Telecommunications, 5 years experience in a telecommunications technical role, technical knowledge and experience required in Earth Station technology, radio systems, data transmission, network systems and national and international telephony and IT proficient, in particular to MS Word, Excel and PowerPoint.

Join us and you will enjoy some of the many benefits that Sure provides, including but not limited to: competitive salary (depending on qualifications and experience), Incentive Bonus Scheme, Pension, Staff Benefits and opportunities for continued professional development.

Due to the nature of this position, the post holder must hold a Satisfactory Police Disclosure.

Interested person can contact the HR department: Karen Buckley on E: karen.buckley@sure.com T:+290 66802 or Chief Technical Officer, Mark Heron on E: mark.heron@sure.com

Applications and CV should be submitted to Human Resources by **4pm on Wednesday 19 August 2020**.



PUBLIC NOTICE

VACANCY Senior Accounts Executive (Fixed term contract until December 2020)

Are you a highly motivated individual looking for a career change or to progress in your Finance career? Do you have good leadership skills and a problem-solving attitude? If so, Corporate Finance has an opportunity for you to join their team

The post-holder must have the following qualifications and experience

- GCSE Maths and English at Grade C or above (applicants without a Level 2 qualification in Maths and English may still apply and can undertake a functional skills assessment as part of the recruitment process)
- ACCA Intermediate Certificate in Financial and Management Accounting or equivalent
- At least 3 years experience in a similar accounting role
- At least 2 years experience in supervising staff

Fixed term contract until December 2020

Salary for the post ranges from £8,613 - £10,765 per annum as per the Finance and Accountancy Cadre Level B

For **further information** about the duties of the post and a copy of the job profile, interested persons should contact Sarah Greentree, Business Support Manager on telephone number 22470 or email: sarah.greentree@sainthelena.gov.sh

Application forms are available from **Corporate Human Resources or the SHG website at: www.sainthelena.gov.sh/vacancies** and should be submitted through Directors, where applicable, to Dianne Venning, Human Resources Officer, The Castle or e-mail recruitment@sainthelena.gov.sh by no later than

4pm on Tuesday, 18 August 2020

SHG positively accepts applications from all members of the community regardless of race, gender, disability, age, sexual orientation, religion or belief, and will consider all applications on the basis of merit, in accordance with the person specification. All disabled applicants meeting the minimum criteria listed in the job profile will be guaranteed an interview. All appointments are subject to the successful candidate providing satisfactory clearances, including a medical check and vetting/DBS clearance. SHG reserves the right to have information provided on the application form independently verified.

PUBLIC NOTICE

VACANCY Support Worker (Cape Villa)

Are you **compassionate, caring, patient and understanding**? We are seeking a **Support Worker** with a good sense of responsibility and commitment to providing assistance and direction to individuals at Cape Villa that encourages them to live relatively independent.

If you are interested in working with us and feel that you have the right values to **make a difference**, then **contact us today**; we'd like to hear from you!

The following are essential...

- **NVQ Level 2 in Health & Social Care** or equivalent (or willingness to undertake)
- **Functional Skills Literacy & Numeracy** Entry Level 1
- **Willing to engage in relevant training** to enhance skills and knowledge in caring for individuals who are no longer able to live at home
- **Good interpersonal skills** with the ability to effectively communicate with tenants/clients and their relatives, members of the public, colleagues, etc.
- **Ability to empathise** with tenants, combined with a genuine desire to improve the quality of life for tenants

Previous experience in working with older persons would be an asset but if not, willingness to learn **is desirable**.

SHG positively accepts applications from all members of the community regardless of race, gender, disability, age, sexual orientation, religion or belief, and will consider all applications on the basis of merit, in accordance with the person specification. All disabled applicants meeting the minimum criteria listed in the job profile will be guaranteed an interview.

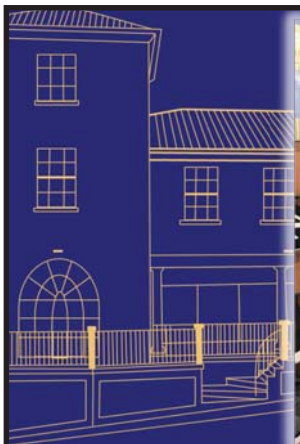
Salary for this post is in Grade B, commencing at **£6,890 per annum**.

For **further information** about the duties of the post and a copy of the job profile, interested persons should contact **Gillian Brooks**, Sheltered Accommodation & Home Care Manager on telephone number 22713 or e-mail: gillian.brooks@sainthelena.gov.sh.

Application forms, which are available from Corporate Human Resources and Children & Adult Social Care Directorate or on the SHG website at: www.sainthelena.gov.sh/vacancies should be submitted through Directors where applicable, to Sharina Williams, Human Resources Officer, The Castle or email recruitment@sainthelena.gov.sh by **no later than Tuesday, 18 August 2020**.

All appointments are subject to the successful candidate providing satisfactory clearances, including a medical check and vetting/DBS clearance. SHG reserves the right to have information provided on the application form independently verified.





For further information, including the Company's attractive benefits package, please contact Nicola Constantine, Manager (Greenlands) on telephone number: 22137 or via email address: greenlandsmanager@solomons.co.sh

Application forms may be collected from Solomons Reception Desk, in the Main Office Building, Jamestown or alternatively an electronic copy can be requested via e-mail address: hadmin@solomons.co.sh and submitted to Miss Daryl Legg, Human Resources Officer, Solomons Office, Jamestown, by 19 August 2020.

Solomon & Company (St Helena) Plc
has a vacancy for a

Sales Assistant

Within Greenland's

Job Outline

To assist with the day-to-day running of the shop and to ensure a high standard of customer service

Interested Persons Should:

- Be customer focused and target driven
- Be competent in Maths, English & IT
- Possess experience in cash handling
- Be self-motivated and able to work well as part of a team

Salary for the post will start at £7,116.00 per annum, (£593.00 per month)



Professional Development Opportunities via Distance Learning

Are you in the Private Sector and would like to study towards a formal qualification via Distance Learning?

Enterprise St Helena would like to hear from you!

Funding is currently available to support Distance Learning courses that are focused on enhancing the business owners and/or employees of businesses. ESH will grant fund at 75% of total cost of course up to a maximum of £7,500.00.

This grant is subject to eligibility criteria. Policy, terms and conditions apply.

For further information please contact: The Business Team on telephone 22920 or email Delia on delia.dupreez@esh.co.sh or Mandy on mandy.obey@esh.co.sh



Head Office | ESH Business Park | Ladder Hill | Tel: +290 22920 | Email: info@esh.co.sh
Visit us online Business and Investment: www.investinsthelena.com | Tourism: www.sthelenatourism.com

Glitz and Glam on the red carpet!

Pilling Primary School brought a red carpet event to Jamestown on the 31st July to celebrate children and teacher achievement over the year. The hall was beautifully decorated with balloons, lights, a beautiful white backdrop and a 'red carpet' which children and teachers walked on to make the event even more special. Everyone dressed in formal attire with some beautiful evening fashion being adorned by parents, teachers and children. All tables were beautifully laid out with finger foods, juice and chamdor. The Head Teacher Miss Elaine Benjamin opened the evening followed by the prize presentation led by Deputy Head Mr Steve Plato. The evening was interspersed with dancing, singing and laughter.

Prizes were awarded as follows...

Reception

Highest overall achiever – Cora Richards

Most noticeable effort – Lewis Baugh

Year 1

Highest overall achiever – Zyanna Henry

Most noticeable effort – Connan Henry

Year 2

Highest overall achiever – Gori Alhazel

Most noticeable effort – Joshua Crowie

Year 3

Highest overall achiever – Elissar Dachraoui

Most noticeable effort – Halle George

Year 4

Highest overall achiever – Bethany Bennett

Most noticeable effort – Jilneal George

Year 5

Highest overall achiever – Jordyn Scipio-Richards

Most noticeable effort – Yara Alhazel and Tyler Anthony

Year 6

Outstanding performance:

Maths – Max Fuller

English – Lauren Duncan

Science – Aleisha Simon

Art – Alexi Benjamin

Humanities – Reno Richard

Music – Dewain Osborne

Most progress made overall – Torrance Benjamin

Outstanding Progress in Maths – Ziggy Yon

Outstanding effort in Science – Nate George

Outstanding effort in Art – T-Jay Rusere

Good progress in Reading – Alisha Moyce

Excellent progress in Reading – Brandon Wade

Outstanding effort in Humanities – Leeanna Johnson

Noticeable interest in Reading – Rebekah Braaf

PE – Best Male and Female (Yr. 6) Riley Yon and Madison Yon

Highest achiever in PTE (English) Trophy – Max Fuller

Highest achiever in PTM (Maths) Trophy – Riley Yon

Highest achiever in PTS (Science) Trophy – Max Fuller

Keenan Bennett Cup (Best Footballer KS2) – Riley Yon

Vocational Studies

Woodwork – Riley Yon

Needlework – Jordyn Scipio-Richards, Georgia Bennett

Knitting – Hannah Taylor

Gardening – Aiden ODean

Cooking – Nate George

Teacher Awards

Level 3 Teaching Assistant Course – Miss Loretta Henry and Mrs Tina Brady

Level 4 Certificate in Teaching and Learning – Miss Cherilee Cranfield and Miss Sandra George

Well Done Staff and Pupils of Pilling for another excellent year of attainment!





Calling ALL involved in the Fishing Industry on St. Helena.

If you are passionate about the Fishing Industry and you want to be a part of the expansion of the Fishery then become a part of the St. Helena Fishermen's Co-Operative - SHFCO. We will work collectively and progressively towards the establishment of a sustainable and economically viable Fishing Industry for the benefit of The Island of St. Helena.

Two meetings will be scheduled for a Q&A session at the Tourist Office Conference Room. Dates and times to follow.

Details to the Co-Op are provided hereto. Please contact us for any information you may require.

Johann-Marais Bezuidenhout
jb1ajcloa@gmail.com
+27 79 876 3092



TIP OF THE WEEK

Make a habit of turning off the lights as the last person leaves a room.



SPECIAL PROMOTION

Ten percent price drop at Thorpe's Grocery shop and Wholesale store.



Heinz Salad Cream 285gm

68-051

Was £1.42

Now: £1.27

Further discount on a case of 12 bottles is as follows:

Public

8% Cash discount
6% on account

Traders

17% Cash discount
12% on account

The best before date is December 2020

OUTLINE PROPOSAL FOR THE ST HELENA FISHERIES CO-OPERATIVE (SHFCO)

This Outline Proposal is to set up a Co-Operative along the lines proposed, **open to all commercial fishing boat owners** in Saint Helena, to work together for mutual benefit.

SHFCO plans to become a leader in developing world standard, quality sustainable fishing and fish processing, utilizing one by one (**OBO**) fishing methods. Furthermore, to build the Co-Operative as an international supplier, accommodative of the ideas of its members (shareholders) and operating according to international best practices in order to be economically and corporately successful in its services.

The inward investor will have no direct involvement in the SH fishing industry, save for funding and providing a number of customised offshore tuna fishing vessels to locally registered SH companies, with mixed foreign and local shareholders.

AIMS AND OBJECTIVES

In general, the **SHFCO** will provide an all inclusive service to its members and manage the catching capacity, handling, storing, processing and marketing of the total volume of fish caught and landed on the Island its members to ensure that all local and international revenue generated will be for the benefit of the members of the **SHFCO**, as well as for the local St Helena community.

The more specific objectives of the **SHFCO** shall be:

- a) To establish a fishery-based business that will encourage and develop members into operating in a commercial /business environment;
- b) To increase the Island's exports to earn increased foreign currency;
- c) To maximise retention of capital and profit on St Helena;
- d) To offer employment , training and upskilling of local St Helenians, i.e. factory staff and vessel crews;
- e) To increase the range of fish and fish products for local consumers at the lowest possible price;
- f) To engage in the protection of marine and coastal environment programmes, i.e. ENRP marine and fishery scientific research, Blue Belt, IPNLF and ICCAT;
- g) To attain approved HACCP & BRC accreditation, and other relevant certifications;
- h) To facilitate a route to market all fish landed by its members, i.e. for local consumption and export
- i) Train and employ local Saint Helenian crew during the offshore and seamounts exploration activities.
- j) To encourage savings among its members and establish a fund from which members can be given loans for productive purposes in the fishing industry.

QUALIFICATION FOR MEMBERSHIP

Membership (shareholding) in the Co-Op will be available for local commercial fisherman with licensed and safety certified fishing vessels. A member may be an individual or a legal entity.

OUTLINE PROPOSAL FOR THE ST HELENA FISHERIES CO-OPERATIVE (SHFCO)

The Total Allowable Catch (TAC) approved by the St Helena Government, will determine the number of members joining the Co-Op, meaning that the quota (volume) allocations to each fisherman will determine the percentage or number of shares in the Co-Op that each fisherman will be eligible for. In other words, each fisherman's quota, expressed as a percentage of the TAC, will determine the number of shares in the Co-Op that is available for him. Other membership criteria that will be considered, includes historical performance and effort, size of investment, period active in the fishing industry, etc..

Shareholders will have full voting and other rights as prescribed in the relevant SH Ordinance. The Share Capital structure of the Co-Op is made up of shares with a nominal value of £1.00 each, which means that the price of the shares that a fisherman will pay, will be based on his quota that he brings to the table, at a price of £1.00 per share.

With respect to **liability** of shareholders (for Co-op debt), shareholders can only be held liable for the unpaid portion on each of their £1.00 shares.

Future new entrants to the SHFCO can only be considered when an opening occurs, or if the TAC is increased on an annual basis.

Members will have an opportunity to work competitively, to maximise potential of the island's fishery, and be subject to the Employment Law and regulations of St Helena.

MANAGEMENT : BOARD OF DIRECTORS

A Board of Directors will be appointed by the founding members. The Board will include local representation by local fisherman and businessman. Daily operations will be managed by a Daily Management Committee (DMC) which will be appointed in house and consist of local staff and Factory Management.

MEETINGS

There shall be 3 classes of meetings, i.e. The Annual General Meeting of shareholders, Monthly Board meetings and ad hoc meetings of Management and shareholders

CATCH AND QUOTA POLICIES

The SHG ENRP Directorate Fishing Licence will stipulate the TAC volume and size limits applicable to all commercial fish species for a specific financial year.

The **offshore** fishing effort represents a major part of the total industry and will absorb a big percentage of the TAC. There are a few local vessels capable of joining that category, which means that the remainder of the fishing fleet, i.e. smaller inshore vessels not capable to fish the seamounts, will be able to continue fishing around the island as they have always done and mostly catching for the local St Helena consumer market.

However, owners of **inshore** vessels will be given the opportunity to skipper, crew and/or to buy in into the offshore vessels at their own discretion

HUMAN RESOURCES

Factory and on land staff

Continued on NEXT PAGE

OUTLINE PROPOSAL FOR THE ST HELENA FISHERIES CO-OPERATIVE (SHFCO)

It is planned for a total of 23 staff to be employed, the majority of which will be employed locally. It is expected that 6 expat staff will be employed particularly to set up accreditation, conduct training and oversee relevant operational processes. Where, and whenever possible, other Islanders will be phased in to replace expat staff.

PRICING PHILOSOPHY & STRUCTURE

The **SHFCO** endorses the fact that the value chain in the fishing industry is complex, especially since export volumes are subject to international variables as it is auctioned off to competing foreign buyers. To combat external variables like international consumer market trends and seasonal oversupply and shortages, the **SHFCO** will install and enforce strict and suitable cost control measures to keep input costs to a minimum.

The Purchase price of fish landed and delivered to **SHFCO** at any given point in time, is wholly dependent on the end consumer or agents' price achieved in the local and international markets. The said achieved price must then absorb the direct cost and overhead cost levies after which the price paid to fisherman can be calculated and communicated to **SHFCO** members. It is therefore accepted that purchase prices may fluctuate in pace with fluctuations in the international markets. However, the **SHFCO** will endeavour to keep intact the prices published to the members and will therefore regulate the purchasing price of fish by continuously reserving a "profit" for financing any shortages which may occur from time to time. Price changes will be communicated to members timeously, and, due to product traceability, consideration will be given to individual market performance

MARKETING STRATEGY, PLAN AND BRANDING

To maximise returns, the **SHFCO** will enforce strict adherence to and efficient management of the cold chain process from vessel to factory to final consumer. It involves maximizing the potential worth of every fish landed, processed and exported. By complying with the rules, members will actively be working and contributing to achieve sustainability, as volumes can be reduced due to increased yield per fish landed. Having access to regular volumes of exclusive quality, the **SHFCO** will be able to empower its' clients in the markets to establish its' market share. From this base an exclusive SH brand can be developed.

ENGAGEMENT IN MARINE RESEARCH PROGRAMS

The **SHFCO** supports the concepts, strategies, programs and other initiatives and plans pursued by the **BBP**, the **IPNLF** and **ICCAT** as well, specifically its attentions and involvement in the St Helena Marine and Ecological environments. The fishing activities of **SHFCO** will be aligned to the doctrine, strategies and plans of these organizations and in particular, adhere to the **OBO** harvest techniques and strategies that ensure the sustainability of tuna stocks while also explicitly recognising the social and economic importance of these fisheries to St Helena Island community. Furthermore, it will endeavour to reduce marine pollution, and adopt measures that reduce bycatch and protect endangered, threatened or protected species, including sharks, seabirds, crustaceans and sea turtles.

PAID SUBMISSION

SHFA Results and Fixtures

Postponed games

Match Report by Mike E Williams

Rovers top

The first round finally came to an end this weekend as the last of the postponed matches took place on Saturday. The first game saw Rovers destroy the Crystal Rangers thirty six goals to nil. This is an average of a goal every two and a half minutes. Goals for the Rovers were from Man of the match Rico Benjamin with 15, Ronan Legg 4, Dane Wade 4, Clayton Benjamin 3, Julian Henry 2, Sean Benjamin 2, Jacob Duncan 2, Brett Isaac 2, Christen Yon, and Young player of the match Tristan Thomas with a single goal.

Rovers 36 v 0 Crystal Rangers

Bellboys drop points

The second game on Saturday saw the Bellboys and Lakers play out a very entertaining one-all draw. The game started with Lakers on the front foot, playing some nice football, with Tyler Brady looking a threat with every Lakers attack. Bellboys were finding it hard to get into their passing rhythm and choose to look for the ball over the top most of the times. The first goal came when Jordan Yon delivered a long throw into the Bellboys box, which found its way to Jace Williams who tucked it away from close range.

The second half saw a very open game with plenty of space in midfield. Mid-way through the second half Bellboys were awarded a corner that Kyle Shoesmith whipped in at the near post, that Lakers goalie somehow punched the ball backwards into his own goal. Both teams went in search of the win with clear chances at both ends. Bellboys front man Andrew Yon saw his header narrowly miss the target from a brilliant Matthias Young cross. With ten minutes to go in the game Lakers were happy with the point, with man of the match Selwyn Stroud defending outstandingly at the back. Bellboys were looking like the team to score and had two glorious chances; both from Ryan Benjamin. One chance was in front of an open goal and somehow Ryan manages to head the ball against the bar. Lakers themselves most stole it at the end when Kyle Yon saw his header crash against the cross-bar.

Bellboys 1 v 1 Lakers

Hotshots Top 10

Name	Team	Goals
Rico Benjamin	Rovers	23
Shane Stroud	Wirebirds	20
Andrew Yon	Bellboys	13
Matthias Young	Bellboys	13
Ronan Legg	Rovers	8
Tyler Benjamin	Wirebirds	8
Sean lee Thomas	Harts	7
Sean Cansick	Harts	6
Liam Yon	Lakers	6
Alistair Buckley	Wirebirds	5

Fixtures:

Sat 15th August

1pm Harts v Crystal Rangers

Referee: Saints

3pm Wirebirds v Lakers

Referee: Rovers

Sun 16th August

1pm Saints v Bellboys

Referee: Lakers

3pm Rovers v Axis

Referee: Harts

SHFA 2020 League Table



Week Seven

Place	Games	Wins	Draw	Lost	GF	GA	GD	Points
Rovers	7	6	1	0	57	2	55	19
Wirebirds	7	5	0	2	46	9	37	15
Bellboys	7	4	2	1	52	6	46	14
Lakers	7	3	2	2	30	12	18	10*
Axis	7	3	1	3	17	13	4	10
Harts	7	3	0	4	22	9	13	9
Saints	7	1	0	6	13	50	-37	3
C Rangers	7	0	0	7	0	136	-136	0

* = one point deducted for not providing a referee.



Reserve Sunday, 30th August 2020

for

The Scouts Fun Day

at the Mule Yard

Opening Time 1pm

Beavers, Cubs & Scouts will participate in a sponsored walk through town starting at 1pm

Join us from around 3pm for Tuck Shop / Tea & Cake Stall / Food To Go/ Sideshows & Stalls/ Raffle and more

Give the family a treat and support the Jamestown Scout Group

Junior Football Results Week 4

Mike Olsson

Blue Arrows 6 v Super Strikers 1

G/S Blue Arrows: 2 Own Goals; Daniel Murangawe 1, Dillon George 2 & Liam Timm 1
G/S Super Strikers: Joel Peters 1
POM: Dillon George & Josh Crowie

Yellow Devils 6 v Predators 2

G/S Yellow Devils: Aden Thomas-Stevens 2; Efron Stroud 1 & Harry Winfield 3
G/S Predators: Lebron George 2
POM: Harry Winfield; Efron Stroud & Lebron George

Galacticos 7 v Fugees 1

G/S Galacticos: Musa 4; Tyrone Cansick 2 & Callum Young 1
G/S Fugees: Dodi Williams 1
POM: Musa Ziausau & Dodi Williams

Rastabouts 8 v Allstars 3

G/S Rastabouts: Taylon Phillips 5; 1 own goal, Stefan o'Dean 1 & Macoy Williams 1
G/S Allstars: Blaze Baldwin 2 & Eureeze Peters 1
POM: Taylon Phillips & Eureeze Peters

Fixtures:

Sat 15th Aug

Pitch 1:

9.15am Primary 6-11 Blue Arrows v Yellow Devils
Referee: Nick Stevens
10am Primary 6-11 Ranglers v Super Strikers
Referee: Owen Richards

9.15am 11-15 Fugees v Rastabouts
Referee: Gareth Johnson
10am 11-15 Gladiators v Galacticos

Top Scorers 11+

Position	Name	Team	Goals Scored
1	Taylon Phillips	Rastabouts	12
2	Musa	Galacticos	7
3	Lars Williams	Fugees	8
4	McCoy Williams	Rastabouts	6
5	Blake Peters	Fugees	5
6	Jaydee Caswell	Gladiators	5
7	Toure Osborne	Allstars	5
8	Blaze Baldwin	Allstars	4
9	Dodi Williams	Fugees	4
10	Taye Peters	Gladiators	3
11	Tyrone Cansick	Galacticos	3
12	Kenan Bargo	Gladiators	2
13	Kieran Williams	Rastabouts	2
14	Stefan O'Dean	Rastabouts	2
15	Annika Lawrence	Galacticos	1
16	Callum Young	Galacticos	1
17	Eureeze Peters	Allstars	1
18	Jacob Williams	Gladiators	1
19	Renae Coleman	Gladiators	1
20	Shaquille Benjamin	Rastabouts	1
21	Tyreese Osborne	Allstars	1

7-11 League Table										
Position	Team	Play	Win	Draw	Lose	GF	GA	GD	Points	
1	Yellow Devils	3	3	0	0	53	4	49	9	
2	Predators	4	3	0	1	49	8	41	9	
3	Blue Arrows	3	1	0	2	9	18	-9	3	
4	Ranglers	3	1	0	2	10	28	-18	3	
5	Superstrickers	3	0	0	3	1	64	-63	0	

11-16 League Table										
Position	Team	Play	Win	Draw	Lose	GF	GA	GD	Points	
1	Rastabouts	3	3	0	0	24	4	20	9	
2	Fugees	3	2	0	1	17	14	3	6	
3	Galacticos	3	2	0	1	14	12	2	6	
4	Gladiators	3	1	0	2	12	17	-5	3	
5	Allstars	4	0	0	4	12	32	20	0	

Top Scorers 7-11

Position	Name	Team	Goals Scored
1	Riley Yon	Predators	22
2	Harry Winfield	Yellow Devils	19
3	Aden Thomas-Stevens	Yellow Devils	16
4	Lebron George	Predators	10
5	Hugo Richards	Predators	8
6	Zac Francis	Yellow Devils	8
7	Ryan Stevens	Yellow Devils	7
8	Dirk Peters	Ranglers	6
9	Tyler Anthony	Predators	6
10	Dillon George	Blue Arrows	3
11	Edward	Predators	3
12	Liam Timm	Blue Arrows	2
13	Ziggy Yon	Ranglers	2
14	Daniel Murangaawe	Blue Arrows	1
15	Efron Stroud	Yellow Devils	1
16	Joel Peters	Superstrickers	1
17	Kurt Lawrence	Ranglers	1
18	Robertson Shawnga	Blue Arrows	1
19	Zian Thomas	Ranglers	1

THE FAMOUS CUBIC METRE

In looking through my file of Funny Happenings on St. Helena I found this Notice on Solomon's Notice Board in 1993, just over 24 years ago. This explains why it was necessary to reduce the limit (which was TWO cubic metres I think at one time although this Notice does not specify the actual weight).

How are we going to manage when there is no ship?

Contributed by Barbara B. George

SOLOMON & COMPANY (ST. HELENA) PLC

JAMESTOWN, ISLAND OF ST. HELENA,
SOUTH ATLANTIC OCEAN.
TELEPHONE 290 2385 FAX 290 2423 TELEFAX 968 4284 SOLO HL
REG. OFFICE: St. George's, Grenada, St. Vincent & the Grenadines
Registered in England NO. 48274

Solomons wish to advise users and potential users requiring the facility of sending freezer packages to Ascension for £10 per package, that the size of a number of packages over the previous 3 shipments were far beyond reasonable. Very often 4 strong men have been needed to lift packages.

Users are advised that henceforth, packages must be restricted to the lifting capability of one man and that staff receiving packages into the containers have been instructed to reject any package they cannot lift, failing which the staff concerned will lose their job.

Shipping Department
10 September 1993



NGCPH



Golf Report for Sunday 9th August 2020

Isn't it such a relief that this August is not so scruffy? Or am I speaking too soon. The weather conditions were great for the Par 3 Strokeplay competition in which 7/16 of the handicap was used. At exactly 12:05 the 6 groups of players teed off. 18 players took part in the competition whose format makes it the shortest competition. Before 16:00 everyone was back in the 19th hole. The game was over. Tied at the top of the leaderboard with net 59 were Mr Ian Johnson and Mr Nick Stevens. They had the only scores in the 50s. On a countback Nick took first prize and Ian settled for second prize. Playing off 4 handicap Nick scored one 2, eight 3s, eight 4s and one 5. Mr Ian Johnson who also played in the same group as Nick with 11 handicap scored six 3s, eight 4s and four 5s. in the two ball pool category other than Nick Stevens 2 on the 18th we had Mike Luke's 2 on the 15th and Paddo Johnson's 2 on 17th. Congratulations to all the winners. The prizes were presented by the club captain Mr Bramwell Bushuru.

Next weekend Saturday 15th and Sunday 16th August 2020 we will have another annual big one. The Bank Of St Helena sponsored 36 hole Strokeplay competition. Plenty of cash prizes. It will be a short gun start at 12:00 on both days.

Registration closes on Friday 14th at 15:00.

A karaoke will take place at the Club after the final round of Bank of St Helena competition, music will be provided by karaoke king Colin Peters. Delicious pizzas will also be on sale prepared by KJ. Do come along and enjoy an afternoon of fun

Happy swinging.!

Contributed by: SHGC



APPLICATIONS FOR DEVELOPMENT PERMISSION

NOTICE IS HEREBY GIVEN that an Application has been received in respect of the following proposals:

1. **Application 2020/55:** FULL Planning Application for **Proposed Alterations and Extensions to Existing Building to form a Kitchen/Dining Area, Bedroom En-suite and Patio**, the Old Ex School House, Hutts Gate, Longwood on Parcel LWS0562. Applicant: Hansel Clingham
2. **Application 2020/56:** FULL Planning Application for **Proposed Construction of a Wheelchair Accessible Public Walkway incorporating four Pedestrian Crossings**, along the north side of Longwood Avenue Road from the junction for Harford School to the junction for Longwood Supermarket on Parcel LWS0595. Applicant: Programme Management Unit
3. **Application 2020/57:** FULL Planning Application for **Proposed Construction of a Covered Area**, the Emergency Entrance of the General Hospital, Jamestown on Parcel JT140010. Applicant: Programme Management Unit

Copies of the Applications and Plans may be inspected by prior appointment with the Planning Section, Essex House, Main Street, Jamestown, Monday to Friday, from 8.30am to 4pm. Appointments can be made with the Secretary on Telephone 22270 or email Karen.Isaac@sainthelena.gov.sh stating the Application Reference Number they wish to inspect.

Any person who wishes to make Representations on the above Application should make them in writing within 14 days to the Planning Office, Essex House, Main Street, Jamestown or Email karen.isaac@sainthelena.gov.sh

Public Representation Closing Date:

4pm – 28th August 2020

**Shane Williams
Planning Officer**



Your Opinion Counts

Dear Editor,

On Sunday night 02 August around 11:35 a male person broke the Bradleys camp quarantine rules by walking past the security barrier. The security guards on duty had no power to retain him because of the social distancing rules, the guards tried convincing the person coming back into the camp also telling him he would get himself into serious trouble if he tried to leave, he replied to the security guards by saying there ain't no virus on camp 3 days are enough here I won't be paying any money and I'm going home he then walk off to his location, the security guard then alert the police telling them the situation and the location of his home, later on he was found at his home and brought back into Bradley camp and guarded by 2 policeman, that person who had seen that male person earlier walking around town like they say they did and knowing that he should've been under quarantine at Bradleys camp why couldn't they have alert the police before he put many more people's life's at risk, it would have been nice to approach the Bradleys camp security guards to get the truth before putting the blame on them, remember there are many ways getting out of Bradleys camp besides walking past the security guards.

Anonymous Reader

Dear Editor,

There has been a number of discussions and meetings recently between Counsellors, the LDCA, the Nation Trust, Heritage Society and concerned members of the public with regards to the absence of an Environment Impact Assessment on the proposed Container Park at Rupert's. After today's EXCO meeting the final decision on the proposed project was deferred for another two weeks. Unfortunately hardly any time has been given to the also important Social Impact

Ninety percent of our food stuff is imported as is all out clothes, medicines, household items, animal feeds, construction materials: everything from an

anchor to a needle; and the majority of it will have to be transported from Rupert's to Jamestown.

I have been informed that it will take four weeks instead of the normal two to de-stuff a container at Rupert's simply because of the time it will take to slowly trundle the heavily laden lorry up field road, down Side Path into the already congested part of lower Jamestown. How much of the frozen goods will be fit for consumption by the time they reach their destination is debatable. The whole consuming time operation will increase the importers costs which they will naturally have to pass on to their customer; and I doubt it will only be a penny or two.

Many people are currently finding it difficult to make ends meet; how will they be able to cope with these increases right across the board?

Can someone please tell us how the Island will benefit from this operation which will be causing serious damage to one of our Internationally important Heritage Sites and even more important, our economy.

**Very Concerned
Olive Brown**

Dear Editor,

The article published in the Sentinel of the 23 July 2020 under the heading of "50% Water Loss in Connect's Treated Supply" is a matter of concern to all residents who pay a utility bill. I am aware that all water companies have an acceptable level of system losses, but I am convinced that 50% is not an acceptable level. It would be interesting to know; when the 50% losses were identified? What losses have been rectified? What is the current level of losses? What is the target date for the losses' to be reduced to an acceptable level?

It is normal for production costs to be calculated based on resources/materials used and to expect the consumers to pay these costs. In essence, we are using more water treatment additives, more electricity, more time and water than is necessary to maintain the system and therefore we the consumers are paying more for our water than is necessary, an unsatisfactory state of affairs.

Through the medium of your paper may I appeal to all elected members to task the company to improve its performance as a matter of urgency; bearing in mind

it is Legislative Council who approves grant funding for Connect St Helena. It is in every resident's interest to assist in the process of reducing losses by reporting any visible leaks promptly, with the understanding that it is the CONSUMER who is paying for the losses.

Yours

**Cyril R George
Sapper Way**

Dear Editor,

OPEN LETTER TO OUR COUNCILLORS

I'd like to explain why I said at the public meeting last night that the "Public Access to SHG Information" bill is nothing to do with Freedom of Information.

Freedom of Information is, fundamentally, about two things. Everybody knows that it is about people being able to ask for information from Government and receiving it. But it is also about Government openly and transparently publishing information about its workings, whether asked to or not. Let's look at this last one first.

Under Freedom of Information everything should be published, automatically, with very few exceptions:

1. personal information relating to an individual (which is also usually taken to include a legal-individual such as a Limited Company); and
2. anything to do with national defence – a category that does not apply to St Helena.

And this is not just a few carefully sanitised headlines, like we get now, but ALL the information that was considered when the decision was taken and the arguments advanced for and against all of the options.

This ensures that Government operates in an open and transparent way at all times, whether anybody is asking or not. It makes it impossible for Government to engage in bad practices such as favouritism, nepotism and back-room deals, because whether or not anybody is currently watching, sooner or later the truth will come out. Nobody will dare to behave dishonestly when they know everything will be put into the public domain.

The "Public Access to SHG Information"

Your Opinion Counts

bill does not address this at all.

Turning back to the first part – responding to requests for information - the “Public Access to SHG Information” bill does not even address this correctly. It has so many exemptions and exclusions it offers little more than a promise to “release to you anything we don’t mind you knowing”.

This is not Freedom of Information.

Clr. Leo described it as a “first step”. Imagine I wanted to walk from my home in Napoleon Street to the Community Centre in Blue Hill. I open my door, step out and (minding the lorries parading down the road carrying goods from Ruperts to the shops) place two feet on the pavement. I can then congratulate myself on having taken the first step.

Freedom of Information was first raised here in 2000 when the then Attorney General dis-applied the UK Freedom of Information Act from St Helena. Twenty years later we have taken the first step. Congratulations! At this rate we may get to actual Freedom of Information sometime around the year 2300.

John Turner

Turner Family, Frith’s Cottage

INTERNATIONAL DAY OF FRIENDSHIP

The International Day of Friendship was proclaimed in 2011 by the UN General Assembly with the idea that friendship between peoples, countries, cultures and individuals can inspire peace efforts and build bridges between communities. SHAPE hosted a successful event on Saturday 8th August 2020 celebrating International Day of Friendship. We embraced St Helena’s diversity with invited guests of varying cultures to join each other’s food, stories and crafts..

Thanks is extended to all those involved in making this event such a success and to everyone who came and celebrated with us - Thank you from all at SHAPE!



Making Ends Meet

Making Ends Meet would like to thank everyone who attended the Quiz at Rosies Taste for Life on Friday night. Special Thanks to Rosie for the Venue, Gavin Jack Thomas the Hilarious Quiz Master, and everyone who generously donated prizes and raffle items. It was a fun night!

Winning Team –Lyndsay’s Ladies- Meal Vouchers Second Prize – Ravi’s popudom preach-Rosies Free drink Voucher Third Prize – Quaran team -Yummy Chocolate Cake

We also held an Auction, with Craig Williams donating a RMS framed Picture, raising £60.00. A Back Gammon & Chess Set went for £42.00 and a pumpkin for £6.00.

The Total amount raised on the night was £370.00.

Making Ends Meet would like to thank everyone for their continuous support.

CONSTITUENCY MEETINGS

The public is advised that Elected Members will be holding a round of constituency meetings during August.

These meetings are an opportunity for you to meet with your Councillors and raise any issues you might have. You are encouraged to attend the meeting in your district.

The following Constituency meetings will take place at 7pm:

Venue	Date
Sandy Bay Community Centre	Thursday, 13 August
Blue Hill Community Centre	Monday, 17 August
Jamestown Community Centre	Tuesday, 18 August
St Mary's Church, The Briars	Tuesday, 18 August
Silver Hill Bar, Levelwood	Wednesday, 19 August
Half Tree Hollow CC	Thursday, 20 August

SHG
10 August 2020



**St Helena
Government**

RECALL OF ICELAND FROZEN PRODUCT

The Health Directorate has received a notification that the following product has been recalled due to the presence of Salmonella:

Iceland Southern Fried Chicken Popsters 220g
Best before date: 04/04/2021



This product was imported by Solomon & Company (St Helena) Plc who has already started the recall process for this product.

The Health Directorate request all members of the public to check at home if they have this product. If you do have this product at home and it has a best before date of 04/04/2021 please do not consume, but return to the outlet it was purchased from.

For further advice, please contact the Environmental Health Section on tel: 22500.

SHG
11 August 2020

EXECUTIVE COUNCIL APPROVES EXPLORATORY BOREHOLE DRILLING PROJECT

At their meeting on Tuesday, 11 August 2020, Executive Council gave their approval for the Exploratory Borehole Drilling Project to be funded from the Economic Development Investment Programme (EDIP). This project will help to address the existing shortfall in the Island's water supply.

With three droughts in the past decade (2013, 2016 and 2019), water supply remains one of the highest priority infrastructure needs to be addressed on St Helena. The shortfall is mainly on the western side of the Island, affecting consumers feeding from the Red Hill distribution system, which during drought periods has resulted in water having to be transferred to this area from other parts of the Island, incurring significant costs in the process.

Four options were looked at to address the current water security problem and to provide a sustainable and cost effective solution. Through investigative and field studies the preferred option is to explore deep aquifers and develop successful boreholes, near the Red Hill distribution system. If the boreholes yield positive results, additional funding would be required to develop the boreholes. Connect Saint Helena Ltd will be contributing 50% towards the exploratory cost.

Council noted the importance of the Project in providing water security on the Island. Updates will be provided as the Project progresses.

In the meantime SHG has just completed a public consultation exercise on a draft Water Resource Strategy based on the principles of:

1. Increasing sustainable access to safe drinking water
2. Increasing availability of water to sustain and develop agricultural production
3. Providing continuity of water supplies required for economic activity (e.g. food processing, construction, tourism, etc.)
4. Improving behaviours associated with the efficient use of water and
5. Encouraging the sound management and protection of freshwater resources.

This Strategy will now be updated to take account of the feedback obtained through the consultation.

SHG
13 August 2020



**St Helena
Government**

Printech

St Helena Ltd



printech@helanta.co.sh



+290 23310

A0 A1 A2 A3 A4 A5 A6

Full Colour Digital Printing

GRAPHIC DESIGN

Business Cards, Brochures
Posters, Fliers, Invitations

PHOTOGRAPHY

Studio Shoots, Weddings
Photo Editing, Other Events

LAMINATING A3 A4

PVC BANNERS

PERSONALISED STATIONERY

Carbonless Duplicate/
Triplicate/Quads/Single

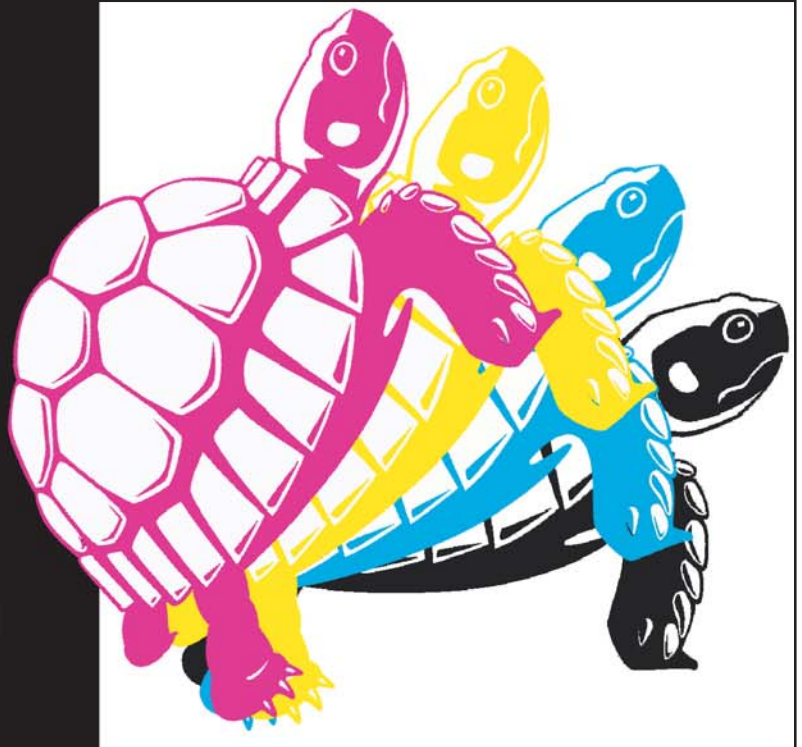
INVOICE BOOKS

RECEIPT BOOKS

STICKERS & LABELS

COLOURED PAPER

Matt, Gloss, Satin Various GSM's



*At Printech...
we're getting on
top of things!!*

We also offer Cutting,
Folding, Perforating
& Binding,

Get in touch for
immediate quotation
on all enquiries.

Quality products,
quick service and a
smile comes for free...



Dates for your Diary @ Anne's Place August 2020

Kid's Craft & Fun Days.

Thursday 13th & Tuesday 25th August

Ages 4 - 10yrs

9am - 3pm

Entrance £6 includes morning and Lunch refreshments
OR £1 to just hangout for a while.

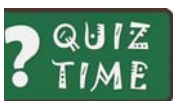


BBQ NIGHT

Saturday 15th August

£16.50 per person (children ages 7-10yrs: £6)

Bar open @ 7pm; meal served @ 7.30pm



Quiz Night with Quizmaster Mike Brown

Saturday 22nd August

£8 per person (children 7-10yrs: £4.50)

Teams of 4 or 6 persons

Spit-Roast Pig

Friday 28th August

£18 per person

Bar open @ 6.30pm; meal served @7pm



Call 22797 to avoid disappointment



Women of Worth High Tea

Sat 29 Aug 2020
2:30pm - 5:30pm
Sandy Bay

Sweet & Savoury Treats | Light
Entertainment | Raffle Prizes

£5.00 per
ticket
Please reserve
your seat by
calling 24690



Family Activity Day

Location: Millennium Forest

Date: Wednesday, 26th August 2020

Time: 10am—2pm

Free entrance

Activities:

- Nature Walk—experience and learn about the islands endemics, prominent landmarks and history
- Bug Hunt
- Nature Art—using natural items to create a picture
- Mini-Scavenger Hunt—explore, discover and experience all that the Forest holds

In recognition of the 20th year since the official start of the Millennium Forest in 2000. Help and support us in continuing our conservation efforts by sponsoring a Gumwood tree to be planted at a cost of £10.00 per tree.

If you require more information then please contact Martina Peters, Head of Conservation on telephone: 22307 or email: martina.peters@trust.org.sh

2013



2018

