

THE ST HELENA



Est. 2005

INDEPENDENT

PRICE: £1

VOLUME XX, ISSUE 27, 20th JUNE 2025

Creative St Helena Score First



Premier League Fixtures 25/26

Pull out and keep - see pages 13-15

Half-Saint work accepted for the Royal Academy Summer Exhibition



Creative St Helena Cannot Carry On





Orkney Island Games – 22 Days To Go But St Helena Has Scored Already with Creative St Helena

The Orkney Island Games are just 22 days away. The St Helena team is one of 24 teams taking part in the twelve sports being contested from archery to triathlon.

Running together with the sport schedule, Orkney Museums have continued an innovation started at the previous Island Games in Guernsey in 2023. The Orkney Museums are showcasing a range of cultural events, including “Island Games Island Voices” when anybody from any of the participating islands was invited to submit a short, written piece about what it means to live on a small, remote island.



All twelve participating islands contributed. Seventy-two submissions were received. The Orkney Islands submitted 28 contributions and the Isle of Wight 10.

Five contributions were submitted from St Helena. Creative St Helena organised and promoted this Island’s response. The very high-quality writing from St Helena caused Gabrielle Barnby of the Orkney Museums to contact Teeny Lucy, Director of Creative St Helena saying “I have been blown away by the responses from St Helena. The pieces portray an island rich in wildlife and history. The close observation of the small things and the reflections on life’s journeys have been a joy to receive. I am so grateful to this community for reaching out across the sea to Orkney.”

Here are the excellent contributions from St Helena

The Girl

I am the girl raised on fresh fish, vegetables, and rice,
seasoned by the smoke of crackling fires.
Laughter echoed through meals,
where health was found in simplicity.
I am the girl who climbs trees with ease,
who treads familiar paths and ventures deeper into the wild,
pausing to savour the sweet guava and medlars.
Barefoot, I delight in cool streams and squelching mud.
I am the girl who scales coastal fishing paths effortlessly,
who casts with a bamboo rod,
who feels most at home in the salted air,
with coarse volcanic sand beneath my feet.
I am the girl with the warm voice
that often drops the ends of words.
The girl quick to laugh,
grateful for all that I have.
I am the girl whose skin tells stories,
woven through centuries—
each mark, each feature
a quiet testament to a heritage long carried,
still unfolding.
I am no longer that girl,
but a woman—
a mother to a girl like that.

Sheena Benjamin



Orkney Island Games – 22 Days To Go But St Helena Has Scored Already with Creative St Helena

An Island Unknown

The sun caressing ancient volcanic rock, the ocean ebbing to and fro, waiting only for what comes next.

This iconic island seems worlds away from natural disasters in other distant lands. The people native to this iconic dot on an atlas have their own crosses to bear, but the food, the culture, the endless smiles are guaranteed to welcome all.

Worldly people travel and travel until they

stumble across St Helena Island which is then ticked off their bucket lists.

We've been called an island unknown with only handfuls of visitors making the long trek across the South Atlantic Ocean.

But to us as "Saints", she is more precious than the jewels in the King of England's crown.

Jane Marie O'Dean



Perspectives

If I was a tropic bird I would know about the calls of my kin as I launch from my rocky perch, unfolding angelic wings and soaring over the cliffs above Munden's Point on a cushion of salty updraft. My eyes scanning across the sparkling expanse of endless ocean to catch the glint of silver baitfish before I dive vertically with red-beaked intent and aerobic freedom.

If I was Napoleon stripped of my Imperial status and incarcerated in mind, body and spirit on this lonely rock, like being cast adrift and left to gradually fade away. Standing in deep contemplation looking past the beauty of the surging waves and the distant silver horizon, longing for glory in battle, Parisian comforts, splendidly astride my tall, grey horse in mass adoration – and impossible rescue.

If I was that young woman, black hair gleaming in the tropical sunshine as I scurry to catch the community work bus, and whose friends have left on planes and yachts to find their fortunes in the big wide world, I might imagine my own future elsewhere experiencing life on the other side of the ocean full of endless possibilities.

If I was that old man who sits in silent contemplation staring at the beige walls, hearing the clink of crockery and chatter as the nursing home tea round begins, I would long to be back on that volcanic homeland where my memories are as sharply clear as those of my boyhood. Running barefoot through the streets of Jamestown, sliding sideways down Jacob's Ladder, stomach growling in anticipation of Nana's guava stew.

Teeny Lucy

Orkney Island Games – 22 Days To Go But St Helena Has Scored Already with Creative St Helena

The Toppled Tree

Pagodas with bell-shaped roofs on rocky islets washed by a tranquil sea; exotic trees, some bushy, others fronded leaning over a narrow inlet; a cormorant drying its wings in the light breeze on an isolated reef. All this portrayed on a piece of porcelain pulled out from the roots of a toppled silky oak, hand painted with exquisite delicacy in indigo blue some 200 years ago. Long before the Suez Canal was dug, St Helena Island stood in the heart of the shipping lane for vessels laden with cargoes from the east, which is how on the wrong side of Africa the tree had delivered an astonishing piece of art from the kilns of the Orient. The island is the eroded peak of an undersea Kilimanjaro long since shunted off the mid-Atlantic ridge by the slow wander of tectonic plates; sea girt, ironbound, and of such a ferocious and forbidding aspect that Nature fashioned it in isolation, but with glorious peaks of emerald cloud forest rich in endemics.

And it was one such rare endemic that I was checking on under the fallen branches: the upside-down golden sail spider, its body fashioned as a triangular ingot of gold. I sit on the trunk in awe of two beauties: the inert, skilled work of a dead artisan, and the active, skilled work of a living planet. Art and nature in synchrony; we must strive to save both for the sanity of humanity.

Joe Hollins



Knapsack Wanderings

The knapsack is ready by the door next to hiking boots still cased in mud and leaf litter from the last outing in the forested tranquillity of the woods at Plantation House. The green bag contains the usual items: a bottle of water, snacks, plasters, sunglasses, small sun creams, insect repellent, house and car keys, some local currency and the trusty St Helena Bank Card. So, where to today? So many choices! Exiting

civilisation and wandering off, soon enveloped in nature: on a path to a cliff-top viewpoint or wending into the lush green interior of ferns, damp mosses and lichens stuck to tree trunks at elevations well above sea level? Or possibly, one of a previously trodden “Post Box Walk”; a new Post Box Walk or a marked “Trail”?

Off, off, off on an adventure: spotting friendly, inquisitive Fairy Terns in the trees; their bright white plumage against dark-green tree leaves. Ebonies next with their delicate “National” flowers. Baby Toes plump roundness peeping out! Passing Cactuses with red-ripe “Prickly Pears”, a Wirebird squawks rising up to attract us away from speckled eggs barely visible in the ground level nest; expected chicks precious to species survival. The “Post Box” reached; maps/books are stamped; messages left for the next adventurer. A stunning view of the endless Atlantic Ocean revealed!

Turning around to retrace steps; heading home for a well-earned cup of tea.

“How ‘bout Plo for dinner, Luvie?”

Patricia Coyle

The St Helena Independent
April Cottage
Putty Hill
Alarm Forest
Tel: 00 290 23836
Email:
independent@helanta.co.sh

To ensure inclusion, please submit adverts and copy by 1pm on Wednesdays. Later requests subject to available space.



Creative St Helena Cannot Carry On

Creative St Helena (CSH) has been active for eleven years. In that time it has achieved amazing things. It will not be surprising if you did not know about this or were only vaguely aware of CSH and not sure what they did.

Like many volunteer organisations, CSH do not shout their achievements from the roof tops.

Some will remember Rebel with Velvet Paws or Speaking Saint, two of the books published as a result of writers' workshops. As well as making a significant contribution to the cultural strand of this year's Orkney Island Games, CSH also contributed to the Guernsey Island Games in 2023.

On the stage CSH produced the Wizard of Oz at Prince Andrew School. Mamma Mia is one of the productions at Rosies. Disney Daze was staged at the Mantis. Many concerts have been organised featuring local singers and musicians. Along with concerts there have been weekly choir sessions for adults and children, including St Paul's primary school choir along with ukulele lessons. And weekly dance classes. There have also been art exhibitions supporting many local artists. CSH organised a multitude of activities; all of them aimed at giving Saints the opportunity to enjoy and improve their creative activities. The young talent show at Prince Andrew School showed clearly there is a lot of talent out there; CSH saw it as their job to find it, encourage it and show the enjoyment and achievement that can come from developing this talent.

Photography, jazz, entertaining CCC residents, school holiday activities, musical sunset cruises, Christmas carols, baby & toddler rhythm & rhyme, tea & poetry. The range of all the activities is astonishing. There has been participation in major events such as The Duke of Edinburgh visit, Napoleon's Bicentenary and the Commonwealth Heads of Government Meeting in Samoa, in October last year.

Now, Creative St Helena has to reduce its activities to a very select few. For many years funding has remained the same; the amount of funding made available has for many years been far short of what is required to meet the wide-ranging demand. The funding crises got really bad in 2022 when financial support from SHG was cut by 50%. CSH was unable to support ongoing running costs and pay a contracted salary. There has been no funding increase since then. No increase in funding was offered by SHG this year.

The director of CSH, Teeny Lucy, is a qualified music teacher with many years of experience. In St Helena, Teeny originally taught music including GCSE at St Helena Secondary School and the primaries. Also St Paul's primary school choir and ukulele lessons. At CSH Teeny led a committee of six. The costs of organising and administering the activities they provided took priority, and very little money was left after that. After more than two years of desperately struggling, it was decided they could not carry on.

So CSH had to make the decision to stop being the driving force it had become over the last eleven years. CSH activities benefited much more than the artistic appetites of individuals. Much of what they did supported the range of educational opportunities available. Other activities benefitted Social Care. Music and movement sessions encourage gentle joint and muscle movement to favourite tunes and could be aligned with physiotherapy. These sessions are thoroughly enjoyed by clients and continue on a voluntary basis. Sadly, much of what CSH offered to the community is now gone – but not forgotten; the extensive connections established by CSH still persist.

Filippo Gorini is an Italian concert pianist with a first-rate international reputation. Filippo and his crew would like to visit St Helena in September / October but cannot give a public performance unless supported by Creative St Helena. If that support is offered, it will be on a voluntary basis.



Island Games Team Are on Their Way



This week, Tyler Anthony (athlete) is the first of the Island Games team to start the long journey to the Orkneys for the Island Games. William (swimmer) and Christine (official) Caswell will leave next week. All competitors and officials are paying expenses from their own pocket and have organised their own travel arrangements. Some will eventually arrive by plane, others may prefer the eight-hour ferry from Aberdeen or Lerwick on the Scottish mainland to Kirkwall, Orkney's main town. Team Leader Anne Dillon will be the last to leave on 5th July. The Orkney Games start 12th July. It is reported that NSASH thank some organisations and individuals have made donations towards the team's expenses but there is no information available saying who, and how much.

Official with Anne Dillon will be Christine Caswell for the swimmers and Andy Cant for the athletes.

Preparation for previous Games has included some intensive training with specialist trainers, but not this time. The Independent has been told any pre-Games training is organised by the athletes themselves.



HALF-SAINT HAS WORK ACCEPTED FOR THE ROYAL ACADEMY SUMMER EXHIBITION

The Royal Academy Summer Exhibition is the oldest and arguably most prestigious open entry art exhibition in the world; it has been held every year since 1769. Competition is intense for a submitted work to be selected for it. Each year, the number of items that may even be considered is capped at 18,000. A shortlist is then drawn up, reducing this to around 4,000. The final selection is made in June, and the 1,600 selected items will be those of the highest quality, and 'on theme'. This year's theme is 'Dialogue'. Even to be shortlisted is prestigious within the art world and to make it through to the final exhibition is a career achievement.



Andy Parker is an artist based in Somerset. Older islanders will remember his Saint Helenian mother as Lynne Evans, a pupil and later a teacher at Country School. Andy is proud of his Saint Helenian heritage and visited the island in 2007 after his master's degree at The Royal College of Art, where he was awarded a prize that enabled him to travel to Saint Helena. Some readers will also have met his cousin, June Evans, who was on the island earlier this year. June is the daughter of the late Aubrey Evans.

On 30 May, Andy was informed that his work Jetsam had been accepted for this year's Royal Academy Summer Exhibition. His inspiration is best expressed in his own words:

"Jetsam emerged from a fascination with household junk ejected onto city streets. Fascinated by their formal qualities I've made photographs and drawings of this for years. After moving to Somerset my regular bike rides would take me through clearings in the woods where fly tippers had hastily dumped similar unwanted items from their vehicle. As well as being of sculptural interest, the haste and the mix of objects both domestic and structural (many at the end of a global journey), tied into my overarching passion for the sea; it brought to mind the image of shipwrecks dashed upon a shore.

I used Lino to produce the image as a relief print, inked with the four colours of commercial printing; cyan, magenta, yellow and black. As with much of my practice it was essential to include an amount of personal labour in the work's production, so each of the four Lino sheets was cut by hand, a process which took over a year."



Proofing in progress (Magenta), December 2023

The Exhibition opened to the public on 17 June and will continue until 17 August 2025.

About Andy Parker and his St Helena Connection

Andy writes: -

In October 2007 I sailed on the RMS from Portland. I wanted to make this journey as my mum and her family are from the Island and I had long been fascinated by the island. Also, my dad was a sailor in the Royal Navy, so I grew up hearing tales of far-off lands and life at sea and was keen to put together the pieces of the mystifying stories I had been told. I was aware of how these two people, spending much of their lives with access to limited resources, had a very particular and inventive approach to goods and

HALF-SAINT HAS WORK ACCEPTED FOR THE ROYAL ACADEMY SUMMER EXHIBITION



Jetsam, 2024 (shown in studio whilst drying)



Visitors to the Exhibition



As displayed at the Summer Exhibition

materials.

During my three month residency I intended to focus on the way St Helenians used and appropriated the things around them, and in particular how this approach to objects might alter with the arrival of a proposed airport. Naturally, my interests diverged as soon as I set foot there and it became clear that identities, mythologies and histories were also territory for adaption and reinterpretation.

With grateful support from Deutsche Bank, The Museum of St Helena, The St Helena Tourist Board and the St Helena Development Agency, I spent a very productive three months researching and making work, followed by a exhibition at the Museum of St Helena, with support from Lucy Caesar.

His exhibition was called Abundance and was displayed at the museum in 2008. Andy lives in Somerset.

The Saint Connection

Andy's mother is Lynette, daughter of the late Arthur and Noreen Evans (nee Duncan). Lynette had two brothers, Aubrey and Robert.

Her Dad was Headteacher at Levelwood School and her mum was a Juniors' teacher at the same school. They lived at Levelwood School House for many years, then transferred their posts to St. Pauls School, and finally for a while lived at Hunt's Vale before leaving the Island for the UK.

Andy's late father Geoffrey was a sailor serving on the Royal Yacht Britannia. He and mum met playing darts in a pub, The Derby Tavern, in Portsmouth. Dad visited the Island a couple of times on Britannia before they married and in recent years, he and mum returned many times to visit family and friends.

The Royal Academy Summer Exhibition

The Summer Exhibition is an open art exhibition held annually by the Royal Academy in central London during the months of June, July, and August. The exhibition includes paintings, prints, drawings, sculpture, architectural designs and models, and is the largest and most popular open exhibition in the United Kingdom. It is also "the longest continuously staged exhibition of contemporary art in the world".

When the Royal Academy was founded in 1768 one of its key objectives was to establish an annual exhibition, open to all artists of merit, which could be visited by the public. The first Summer Exhibition took place in 1769; it has been held every year since without exception.

Today, around 1,000 works are selected each year from as many as 32,000 entries representing some 16,000 artists. Any artist (living, known or unknown) may submit up to two works at a fee of £40 per piece.



A Father's Day Reflection on Guiding Our Island's Future

As we recently celebrated Father's Day across our island community, we were reminded of the profound impact that caring adults have on young lives. Yet here on St. Helena, many of our young people face unique challenges that extend far beyond the traditional family unit. Geographic isolation, limited educational resources, and restricted career pathways can create obstacles that seem insurmountable to teenagers already struggling with the pressures of adolescence.

The statistics are sobering. Too many of our youth at risk are falling behind in their GCSE studies, not because they lack ability, but because they lack consistent support, guidance, and someone who believes in their potential. When young people don't see a clear path from education to meaningful employment on our island, motivation naturally wanes.

This is where mentorship becomes not just helpful, but essential.

The Mentorship Advantage

Mentorship is more than academic tutoring—it's about building relationships that transform lives. When a young person has a mentor, they gain access to something invaluable: an adult who listens without judgment, provides consistent encouragement, and helps navigate both academic challenges and life decisions.

For our GCSE students, mentors can provide the structured support needed to develop effective study habits, manage exam anxiety, and maintain focus during crucial revision periods. But perhaps more importantly, mentors help young people envision their future beyond school gates. They serve as living examples that success is possible, even from our remote corner of the South Atlantic.

Research consistently shows that mentored youth are more likely to complete their education, develop stronger self-confidence, and make better life choices. On an island where every young person matters to our collective future, these outcomes aren't just individual victories—they're community investments.

Bridging Education and Employment

St. Helena's economy is evolving rapidly, with opportunities in tourism, conservation, digital services, and sustainable development. However, many young people struggle to connect their GCSE subjects with real career possibilities. Mentors can bridge this gap by sharing their professional experiences, facilitating job shadowing opportunities, and helping youth understand how their studies translate into workplace skills.

A mentor might help a student see how their geography studies could lead to conservation work, or how their IT skills could open doors in our growing digital economy. They can provide insights into the soft skills employers value: punctuality, communication, problem-solving, and

teamwork. Most crucially, they can help young people develop the confidence to pursue opportunities, whether on-island or through further education abroad.

A Call to Our Community

Every adult in our community has something valuable to offer. You don't need formal qualifications to be a mentor—you need commitment, patience, and genuine care for young people's wellbeing. Whether you're a shop owner, civil servant, teacher, or retiree, your life experience and professional insights could be exactly what a young person needs to unlock their potential.

Parents, we encourage you to seek out mentorship opportunities for your children, especially if they're struggling academically or seem uncertain about their future. Having another trusted adult voice can often breakthrough where family conversations have reached an impasse.

Moving Forward Together

As we reflect on the father figures and role models who shaped us, let's commit to becoming those guiding lights for the next generation.

Our island's youth don't need us to solve all their problems—they need us to believe in their abilities and walk alongside them as they discover their own solutions.

The young person struggling with mathematics today could become tomorrow's engineer. The teenager who seems disengaged might be waiting for someone to show them how their interests connect to meaningful work. The student who

fears they're not university material might just need someone to help them recognize their unique strengths.

Every mentor relationship is a vote of confidence in our island's future. Every young person who completes their GCSEs with strong support is more likely to become a contributing member of our community, whether they stay on St. Helena or carry our values into the wider world.

Our youth are not at risk of failure—they're at the threshold of possibility. They simply need caring adults willing to help them cross that threshold. The question isn't whether our young people have potential; it's whether we, as a community, will step forward to help them realize it.

The future of St. Helena begins with the choices we make today about supporting our youth. Let's choose mentorship. Let's choose hope. Let's choose to build bridges to tomorrow, one young person at a time.

If you're interested in becoming a mentor or connecting your young person with mentorship opportunities, contact the Education Directorate or speak with your child's school. Our island's greatest resource isn't in its landscapes or seas—it's in the potential of our people. Till Next Time, keep Well.





Dear Editor,

“Due to time restrictions, I was not able to deliver the adjournment debate speech I had prepared. However, I feel it is essential to share some closing reflections with the public regarding this significant piece of legislation.

I want to thank all members of the House, including Minister Mark Brooks and the Attorney General, for their clarity and engagement yesterday. I’m grateful that yesterday’s public sitting of the Legislative Council was broadcast on the radio, allowing members of the public to hear some of the reasoning and discussion behind the decisions made.

This Bill, while not perfect, lays a solid foundation for improving the regulation of communications on our Island. It introduces an independent Regulator, strengthens consumer protection, guarantees net neutrality, and ensures that universal service obligations are in place, safeguarding the rights and access of all end users, including those in our most remote communities.

It is important to be clear: the Bill does not stop market dominance. It still allows for an exclusive licence to be issued, and there is a chance that one will be issued to Sure by the end of the month. However, it does include necessary safeguards for consumers and tools for better oversight. Going forward, it is now the responsibility of this Government – and all future governments – to ensure that the Regulator has the resources, independence, and authority to carry out its duties effectively. In short, it is the best solution in a bad situation.

I supported the Bill because it gives us a framework to protect the public interest in a vital sector. But I must also express regret that we are moving away from what was once promoted as the best solution – the Design, Build and Transfer (DBT) model. That model was structured, locally focused, and aimed at long-term sustainability and ownership. In my view, it would have delivered by far the best outcome for the Island and its people.

I also believe strongly that there must be accountability for the failure of the Fibre project, which has ultimately brought us to this point. The loss of £600,000+ in public funds cannot be brushed aside. While the Communications Bill helps us make the best of a bad situation, we must remain honest about the fact that this was not the original vision, and lessons must be learned.

I remain committed to ensuring that the decisions made in this House reflect the long-term interests of the people of St Helena. Whether I am a councillor or a member of the public, that means insisting on transparency, protecting public money, and ensuring that no one – now or in the future – is left behind in our digital future.”

If anyone has any questions about what I discussed yesterday, please don't hesitate to contact me or stop me in the street.

Regards

Karl Thrower

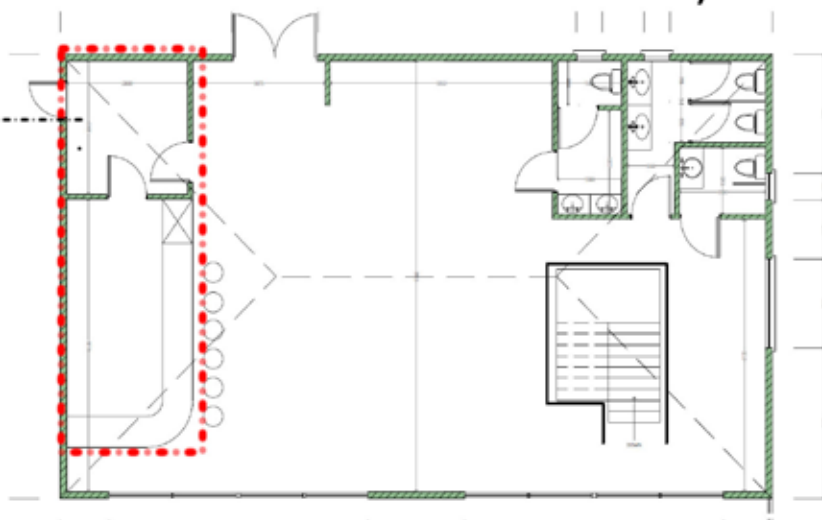
EXPRESSIONS OF INTEREST

FOOD VENDOR

(PROPERTY FORMERLY KNOWN AS ROSIES)

AREA FOR RENT
(previously used as bar area)

- *PRIME LOCATION
- *SEA VIEWS
- *SHARED SEATING AREA
- *TOILET FACILITIES
- *UTILITIES SEPERATE
- *FROM 1 OCTOBER 2025



INTERESTED PARTIES CAN CONTACT TARA FOR MORE INFO
T: +290 61310 E: tara@roseandcrown.sh



Diocese of St Helena

The Parish of St Paul's

Sunday 22nd June 2025 – 12th Sunday of the Year

8.00 a.m.	Eucharist	Cathedral
9.30 a.m.	Eucharist	St Andrew
11.15 a.m.	Eucharist	St Helena & The Cross
5.00 p.m.	Taize Worship Service	Cathedral

The Parish of St James

Sunday 22nd June 2025 – 12th Sunday of the Year

9.30 a.m.	Eucharist	St James
	Thursday 26th June	
7.00 p.m.	Mass with Healing	St John

The Parish of St Matthew

Sunday 22nd June 2025 – 12th Sunday of the Year

11.15 a.m.	Eucharist	St Matthew
	Tuesday 24th June	
7.00 p.m.	70x7 Forgiveness	St Mark

Baha'i Faith

'Thou art My glory and My glory fadeth not; Thou art My robe and My robe shall never be outworn. Abide then in thy love for Me, that thou mayest find Me in the realm of glory'

Baha'u'llah

7pm on Thursdays
at the St. Helena Gumwoods
Baha'i Centre.

You are invited to consider the
Revelation of Baha'u'llah
in the 19th Century
and its application today.

Light Refreshment



ROADS REHABILITATION PROGRAMME

The Highways Authority has given approval for Ladder Hill Road and Shy Road to be closed from Tuesday 01 July 2025 to Thursday 31 July 2025 to all vehicular traffic and pedestrians.

This closure is to allow the Roads Section to carry out full-width surface works with the micro-paver for the rehabilitation of the part of the primary road network funded under the Economic Development Investment Programme (EDIP).

Emergency services and public transport will also be affected. All vehicles needing to travel in and out of Jamestown during this time must travel via Side Path or Constitution Hill Road.

Car sharing is encouraged to reduce the cost of travel.

The Roads Section has inspected all primary roads and are developing a schedule to address priority areas. Upcoming works will take place in the following priority areas:

- Ladder Hill Road
- Ladder Hill to White Wall
- White Wall to Sapper Way Junction
- White Gate to Bates Branch
- Bottom Woods to Longwood Gate
- Longwood Gate to Hutts Gate
- Hutts Gate to Alarm Forest

Dates for scheduled work will be announced nearer the time, pending suitable weather conditions and arrival of bitumen from South Africa.

The public are thanked in advance for their patience and understanding during these important works.



St Helena
Government

APPLICATIONS FOR DEVELOPMENT PERMISSION

NOTICE IS HEREBY GIVEN that an Application has been received in respect of the following proposals:

1. **Application 2025/39:** FULL Planning Application for **Proposed Construction of a Two Bedroom Dwelling**, Bottom Woods Comprehensive Development Area on Parcel LWN0505. Applicant: Christine Benjamin
2. **Application 2025/40:** FULL Planning Application for **Proposed Construction of a Two Bedroom Dwelling**, Bottom Woods Comprehensive Development Area on Parcel LWN0514. Applicant: Angelo Moyce
3. **Application 2025/41:** FULL Planning Application for **Proposed Construction of a Commercial Laundry Room**, Rock Club, Ladder Hill on Parcel HTH0840. Applicant: Melvin Benjamin
4. **Application 2025/42:** FULL Planning Application for **Proposed Construction of a Verandah**, Woodcot Cottage, Alarm Forest on Parcel FP0238. Applicant: W.A. Thorpe & Sons Ltd

Copies of the Applications and Plans may be inspected by prior appointment with the Planning Section, Essex House, Main Street, Jamestown, Monday to Friday, from 8.30am to 4pm. Appointments can be made with the Administration Assistant on Telephone 24724 or email rea.williams@sainthelena.gov.sh stating the Application Reference Number they wish to inspect.

Any person who wishes to make Representations on any of the above Applications should make them in writing to the Planning Office, Essex House, Main Street, Jamestown or Email rea.williams@sainthelena.gov.sh

Public Representation Closing Date: 4pm – 04 July 2025

Public Notice Hearing : The Appeals Tribunal hereby notifies that the Appeal Hearing against the decision to refuse development application 2024/13 by the Governor in Council at its meeting on 23rd July 2024, and to serve an enforcement notice or as to the terms thereof is scheduled to take place on 4th July 2025 at 10am at the Courthouse, Jamestown.


Patricia Coyle, Head of Planning & Building Control

House for Sale

Number 15 Bock
Deadwood




Contact Larry Francis

Tel Numbers 24762 or
63581



Come and enjoy an
afternoon of *Massage*
& *Relaxation*

- Back Massage
- Foot Massage
- Hydrotherapy

 Sunday 22nd June @ 3pm
 The SDA Church, Jamestown 

For more information please contact Sarah 61946 or Edson 25677



ECONOMIC DEVELOPMENT INVESTMENT PROGRAMME **PUBLIC INFORMATION MEETINGS**

The Programme Management Office (PMO) will be holding public information meetings in June 2025 to provide an update on the Wastewater Management Project. This project focuses on improving the sewage in, Half Tree Hollow and Jamestown and is being delivered under the Economic Development Investment Programme (EDIP). These sessions will be held as a joint engagement with the PMO, Connect St Helena, and Environmental Health.

These meetings are intended to share the latest developments on the project and to gather feedback from the community. Members of the public are encouraged to attend and engage directly with the team responsible for delivering this important infrastructure work.

All meetings will commence at 19:00 and will take place as follows:

Date	Venue
Tuesday, 24 June	Community Centre, Half Tree Hollow
Thursday, 26 June	Museum, Jamestown

Tea, coffee, and cake will be provided.

Public participation and input are welcomed, as community views will help shape the future of this essential service.



COMMERCIAL LENDING CLIENT REMINDERS



Bank of St Helena Ltd would like to remind Commercial Lending Clients as per your facility letter, you are required to submit the following documentation and information for the financial year 2024/25.

The deadlines by which you must submit them to the Bank are as follows;

- A copy of your annual accounts inclusive of Trading, Profit & Loss (or Income & Expenditure) account, Balance Sheet and Fixed Asset & Depreciation Schedule – to be received by Monday, 30th June 2025.

For applicable clients:

- A copy of your Business Plan/Forecast inclusive of monthly projected balance sheets, income statements & Cash flow projections for the next financial year (2025/26) – to be received by Monday, 30th June 2025.

Please refer to your facility letter for full details of your agreement. A courtesy letter has been mailed during the beginning of June. Failure to meet the specified deadlines will result in the release of additional letters and will also incur the Bank's reminder letter fees.

Please note that a copy of your quarterly statement of monies received and paid out by your company/business is required to be submitted to the Bank for every quarter (ending June, September, December and March) by the last day of the month following the end of the quarter, therefore this information for April to June 2025 is required to be submitted by Thursday, 31st July 2025.

All necessary documentation must be submitted to the Lending Section via the Customer Service Terminal in the Main Bank Hall or by post to Lending Section, Bank of St Helena Ltd, Market Street, Jamestown.

For further assistance or information, please contact the Lending Section on (+290) 22390 or email creditriskofficer@sainthelenabank.com.



Bank of St. Helena Ltd.

Established and regulated in St Helena under the Financial Services Ordinance, 2008 and 2017, the Financial Services Regulations, 2017, the Company Ordinance, 2004 and the Company Regulations, 2004



info@sainthelenabank.com



www.sainthelenabank.com



[@sainthelenabank](https://www.facebook.com/sainthelenabank)



+290 22390



Market Street, Jamestown



Bank of St Helena Ltd

2025/26 FIXTURES
RELEASED



Premier League Fixtures 2025/26

WEEK1 Friday 15 August

20:00 Liverpool v AFC Bournemouth
(Sky Sports)

Saturday 16 August

12:30 Aston Villa v Newcastle United
(TNT Sports)

Brighton & Hove Albion v Fulham

Nottingham Forest v Brentford

Sunderland v West Ham United

Tottenham Hotspur v Burnley

17:30 Wolverhampton Wanderers v

Manchester City (Sky Sports)

Sunday 17 August

14:00 Chelsea v Crystal Palace (Sky
Sports)

16:30 Manchester United v Arsenal
(Sky Sports)

Monday 18 August

20:00 Leeds United v Everton (Sky
Sports)

WEEK2 Saturday 23 August

AFC Bournemouth v Wolverhampton
Wanderers

Arsenal v Leeds United

Brentford v Aston Villa

Burnley v Sunderland

Crystal Palace v Nottingham Forest

Everton v Brighton & Hove Albion

Fulham v Manchester United

Manchester City v Tottenham Hotspur

Newcastle United v Liverpool

West Ham United v Chelsea

WEEK3 Saturday 30 August

Aston Villa v Crystal Palace

Brighton & Hove Albion v Manchester
City

Chelsea v Fulham

Leeds United v Newcastle United

Liverpool v Arsenal

Manchester United v Burnley

Nottingham Forest v West Ham
United

Sunderland v Brentford

Tottenham Hotspur v AFC

Bournemouth

Wolverhampton Wanderers v Everton

WEEK4 Saturday 13 September

AFC Bournemouth v Brighton & Hove
Albion

Arsenal v Nottingham Forest

Brentford v Chelsea

Burnley v Liverpool

Crystal Palace v Sunderland

Everton v Aston Villa

Fulham v Leeds United

Manchester City v Manchester United

Newcastle United v Wolverhampton

Wanderers

West Ham United v Tottenham Hotspur

WEEK5 Saturday 20 September

AFC Bournemouth v Newcastle United

Arsenal v Manchester City

Brighton & Hove Albion v Tottenham

Hotspur

Burnley v Nottingham Forest

Fulham v Brentford

Liverpool v Everton

Manchester United v Chelsea

Sunderland v Aston Villa

West Ham United v Crystal Palace

Wolverhampton Wanderers v Leeds
United

WEEK6 Saturday 27 September

Aston Villa v Fulham

Brentford v Manchester United

Chelsea v Brighton & Hove Albion

Crystal Palace v Liverpool

Everton v West Ham United

Leeds United v AFC Bournemouth

Manchester City v Burnley

Newcastle United v Arsenal

Nottingham Forest v Sunderland

Tottenham Hotspur v Wolverhampton

Wanderers

WEEK7 Saturday 4 October

AFC Bournemouth v Fulham

Arsenal v West Ham United

Aston Villa v Burnley

Brentford v Manchester City

Chelsea v Liverpool

Everton v Crystal Palace

Leeds United v Tottenham Hotspur

Manchester United v Sunderland

Newcastle United v Nottingham Forest

Wolverhampton Wanderers v Brighton
& Hove Albion

WEEK8 Saturday 18 October

Brighton & Hove Albion v Newcastle
United

Burnley v Leeds United

Crystal Palace v AFC Bournemouth

Fulham v Arsenal

Liverpool v Manchester United

Manchester City v Everton

Nottingham Forest v Chelsea

Sunderland v Wolverhampton

Wanderers

Tottenham Hotspur v Aston Villa

West Ham United v Brentford

WEEK9 Saturday 25 October

AFC Bournemouth v Nottingham
Forest

Arsenal v Crystal Palace

Aston Villa v Manchester City

Brentford v Liverpool

Chelsea v Sunderland

Everton v Tottenham Hotspur

Leeds United v West Ham United

Manchester United v Brighton & Hove
Albion

Newcastle United v Fulham

Wolverhampton Wanderers v Burnley

WEEK10 Saturday 1 November

Brighton & Hove Albion v Leeds
United

Burnley v Arsenal

Crystal Palace v Brentford

Fulham v Wolverhampton Wanderers

Liverpool v Aston Villa

Manchester City v AFC Bournemouth

Nottingham Forest v Manchester
United

Sunderland v Everton

Tottenham Hotspur v Chelsea

West Ham United v Newcastle United

WEEK11 Saturday 8 November

Aston Villa v AFC Bournemouth

Brentford v Newcastle United

Chelsea v Wolverhampton Wanderers

Crystal Palace v Brighton & Hove
Albion

Everton v Fulham

Manchester City v Liverpool

Nottingham Forest v Leeds United

Sunderland v Arsenal

Tottenham Hotspur v Manchester
United

West Ham United v Burnley

WEEK12 Saturday 22 November

AFC Bournemouth v West Ham
United

Arsenal v Tottenham Hotspur

Brighton & Hove Albion v Brentford

Burnley v Chelsea

Fulham v Sunderland

Leeds United v Aston Villa

Liverpool v Nottingham Forest

Premier League Fixtures 2025/26

Manchester United v Everton
Newcastle United v Manchester City
Wolverhampton Wanderers v Crystal Palace

WEEK13 Saturday 29 November

Aston Villa v Wolverhampton Wanderers
Brentford v Burnley
Chelsea v Arsenal
Crystal Palace v Manchester United
Everton v Newcastle United
Manchester City v Leeds United
Nottingham Forest v Brighton & Hove Albion
Sunderland v AFC Bournemouth
Tottenham Hotspur v Fulham
West Ham United v Liverpool

WEEK14 Wednesday 3 December

AFC Bournemouth v Everton
Arsenal v Brentford
Brighton & Hove Albion v Aston Villa
Burnley v Crystal Palace
Fulham v Manchester City
Leeds United v Chelsea
20:00 Liverpool v Sunderland
20:00 Manchester United v West Ham United
Newcastle United v Tottenham Hotspur
Wolverhampton Wanderers v Nottingham Forest

WEEK15 Saturday 6 December

AFC Bournemouth v Chelsea
Aston Villa v Arsenal
Brighton & Hove Albion v West Ham United
Everton v Nottingham Forest
Fulham v Crystal Palace
Leeds United v Liverpool
Manchester City v Sunderland
Newcastle United v Burnley
Tottenham Hotspur v Brentford
Wolverhampton Wanderers v Manchester United

WEEK16 Saturday 13 December

Arsenal v Wolverhampton Wanderers
Brentford v Leeds United
Burnley v Fulham
Chelsea v Everton
Crystal Palace v Manchester City
Liverpool v Brighton & Hove Albion
Manchester United v AFC Bournemouth
Nottingham Forest v Tottenham Hotspur
Sunderland v Newcastle United

West Ham United v Aston Villa

WEEK17 Saturday 20 December

AFC Bournemouth v Burnley
Aston Villa v Manchester United
Brighton & Hove Albion v Sunderland
Everton v Arsenal
Fulham v Nottingham Forest
Leeds United v Crystal Palace
Manchester City v West Ham United
Newcastle United v Chelsea
Tottenham Hotspur v Liverpool
Wolverhampton Wanderers v Brentford

WEEK18 Saturday 27 December

Arsenal v Brighton & Hove Albion
Brentford v AFC Bournemouth
Burnley v Everton
Chelsea v Aston Villa
Crystal Palace v Tottenham Hotspur
Liverpool v Wolverhampton Wanderers
Manchester United v Newcastle United
Nottingham Forest v Manchester City
Sunderland v Leeds United
West Ham United v Fulham

WEEK19 Tuesday 30 December

Arsenal v Aston Villa
Brentford v Tottenham Hotspur
Burnley v Newcastle United
Chelsea v AFC Bournemouth
Crystal Palace v Fulham
Liverpool v Leeds United
Manchester United v Wolverhampton Wanderers
Nottingham Forest v Everton
Sunderland v Manchester City
West Ham United v Brighton & Hove Albion

WEEK20 Saturday 3 January 2026

AFC Bournemouth v Arsenal
Aston Villa v Nottingham Forest
Brighton & Hove Albion v Burnley
Everton v Brentford
Fulham v Liverpool
Leeds United v Manchester United
Manchester City v Chelsea
Newcastle United v Crystal Palace
Tottenham Hotspur v Sunderland
Wolverhampton Wanderers v West Ham United

WEEK21 Wednesday 7 January 2026

AFC Bournemouth v Tottenham Hotspur
Arsenal v Liverpool
Brentford v Sunderland
Burnley v Manchester United
20:00 Crystal Palace v Aston Villa
Everton v Wolverhampton Wanderers

Fulham v Chelsea

20:00 Manchester City v Brighton & Hove Albion
Newcastle United v Leeds United
West Ham United v Nottingham Forest

WEEK22 Saturday 17 January

Aston Villa v Everton
Brighton & Hove Albion v AFC Bournemouth
Chelsea v Brentford
Leeds United v Fulham
Liverpool v Burnley
Manchester United v Manchester City
Nottingham Forest v Arsenal
Sunderland v Crystal Palace
Tottenham Hotspur v West Ham United
Wolverhampton Wanderers v Newcastle United

WEEK23 Saturday 24 January

AFC Bournemouth v Liverpool
Arsenal v Manchester United
Brentford v Nottingham Forest
Burnley v Tottenham Hotspur
Crystal Palace v Chelsea
Everton v Leeds United
Fulham v Brighton & Hove Albion
Manchester City v Wolverhampton Wanderers
Newcastle United v Aston Villa
West Ham United v Sunderland

WEEK24 Saturday 31 January

Aston Villa v Brentford
Brighton & Hove Albion v Everton
Chelsea v West Ham United
Leeds United v Arsenal
Liverpool v Newcastle United
Manchester United v Fulham
Nottingham Forest v Crystal Palace
Sunderland v Burnley
Tottenham Hotspur v Manchester City
Wolverhampton Wanderers v AFC Bournemouth

WEEK25 Saturday 7 February

AFC Bournemouth v Aston Villa
Arsenal v Sunderland
Brighton & Hove Albion v Crystal Palace
Burnley v West Ham United
Fulham v Everton
Leeds United v Nottingham Forest
Liverpool v Manchester City
Manchester United v Tottenham Hotspur
Newcastle United v Brentford

Premier League Fixtures 2025/26

Wolverhampton Wanderers v Chelsea

WEEK26 Wednesday 11 February

20:00 Aston Villa v Brighton & Hove Albion

Brentford v Arsenal

Chelsea v Leeds United

20:00 Crystal Palace v Burnley

Everton v AFC Bournemouth

20:00 Manchester City v Fulham

Nottingham Forest v Wolverhampton Wanderers

Sunderland v Liverpool

Tottenham Hotspur v Newcastle United

West Ham United v Manchester United

WEEK27 Saturday 21 February

Aston Villa v Leeds United

Brentford v Brighton & Hove Albion

Chelsea v Burnley

Crystal Palace v Wolverhampton Wanderers

Everton v Manchester United

Manchester City v Newcastle United

Nottingham Forest v Liverpool

Sunderland v Fulham

Tottenham Hotspur v Arsenal

West Ham United v AFC Bournemouth

WEEK28 Saturday 28 February

AFC Bournemouth v Sunderland

Arsenal v Chelsea

Brighton & Hove Albion v Nottingham Forest

Burnley v Brentford

Fulham v Tottenham Hotspur

Leeds United v Manchester City

Liverpool v West Ham United

Manchester United v Crystal Palace

Newcastle United v Everton

Wolverhampton Wanderers v Aston Villa

WEEK29 Wednesday 4 March

AFC Bournemouth v Brentford

20:00 Aston Villa v Chelsea

Brighton & Hove Albion v Arsenal

Everton v Burnley

Fulham v West Ham United

Leeds United v Sunderland

20:00 Manchester City v Nottingham Forest

Newcastle United v Manchester United

Tottenham Hotspur v Crystal Palace

Wolverhampton Wanderers v

Liverpool

WEEK30 Saturday 14 March

Arsenal v Everton

Brentford v Wolverhampton Wanderers

Burnley v AFC Bournemouth

Chelsea v Newcastle United

Crystal Palace v Leeds United

Liverpool v Tottenham Hotspur

Manchester United v Aston Villa

Nottingham Forest v Fulham

Sunderland v Brighton & Hove Albion

West Ham United v Manchester City

WEEK31 Saturday 21 March

AFC Bournemouth v Manchester United

Aston Villa v West Ham United

Brighton & Hove Albion v Liverpool

Everton v Chelsea

Fulham v Burnley

Leeds United v Brentford

Manchester City v Crystal Palace

Newcastle United v Sunderland

Tottenham Hotspur v Nottingham Forest

Wolverhampton Wanderers v Arsenal

WEEK32 Saturday 11 April

Arsenal v AFC Bournemouth

Brentford v Everton

Burnley v Brighton & Hove Albion

Chelsea v Manchester City

Crystal Palace v Newcastle United

Liverpool v Fulham

Manchester United v Leeds United

Nottingham Forest v Aston Villa

Sunderland v Tottenham Hotspur

West Ham United v Wolverhampton Wanderers

WEEK33 Saturday 18 April

Aston Villa v Sunderland

Brentford v Fulham

Chelsea v Manchester United

Crystal Palace v West Ham United

Everton v Liverpool

Leeds United v Wolverhampton Wanderers

Manchester City v Arsenal

Newcastle United v AFC Bournemouth

Nottingham Forest v Burnley

Tottenham Hotspur v Brighton & Hove Albion

WEEK34 Saturday 25 April

AFC Bournemouth v Leeds United

Arsenal v Newcastle United

Brighton & Hove Albion v Chelsea

Burnley v Manchester City

Fulham v Aston Villa

Liverpool v Crystal Palace

Manchester United v Brentford

Sunderland v Nottingham Forest

West Ham United v Everton

Wolverhampton Wanderers v

Tottenham Hotspur

WEEK35 Saturday 2 May

AFC Bournemouth v Crystal Palace

Arsenal v Fulham

Aston Villa v Tottenham Hotspur

Brentford v West Ham United

Chelsea v Nottingham Forest

Everton v Manchester City

Leeds United v Burnley

Manchester United v Liverpool

Newcastle United v Brighton & Hove Albion

Wolverhampton Wanderers v Sunderland

WEEK36 Saturday 9 May

Brighton & Hove Albion v

Wolverhampton Wanderers

Burnley v Aston Villa

Crystal Palace v Everton

Fulham v AFC Bournemouth

Liverpool v Chelsea

Manchester City v Brentford

Nottingham Forest v Newcastle United

Sunderland v Manchester United

Tottenham Hotspur v Leeds United

West Ham United v Arsenal

WEEK37 Sunday 17 May

AFC Bournemouth v Manchester City

Arsenal v Burnley

Aston Villa v Liverpool

Brentford v Crystal Palace

Chelsea v Tottenham Hotspur

Everton v Sunderland

Leeds United v Brighton & Hove Albion

Manchester United v Nottingham Forest

Newcastle United v West Ham United

Wolverhampton Wanderers v Fulham

WEEK38 Sunday 24 May

Brighton & Hove Albion v Manchester United

Burnley v Wolverhampton Wanderers

Crystal Palace v Arsenal

Fulham v Newcastle United

Liverpool v Brentford

Manchester City v Aston Villa

Nottingham Forest v AFC

Bournemouth

Sunderland v Chelsea

Tottenham Hotspur v Everton

West Ham United v Leeds United

PROPERTY FOR SALE

3 Bedroom detached bungalow Colt Sheds, Longwood

This bungalow sits on approx. 0.20 acres (1,983 sq.m)

House is approx: 15m x 10m (150 sq.m) – including large bay.

The house is situated in a northwest-facing plot overlooking Millfield and Deadwood. Offering a pleasant sunny view, including the Flagstaff to the north. The plot is virtually flat.

The room layout is on two levels, with a step down into the Dining Room, lounge and Conservatory area.

Main features:

- Master bedroom with En-Suite
- Bathroom with Toilet
- Guest Toilet
- Large garden area
- Double Garage
- Intergrated Sewage system, that connects to main sewage line

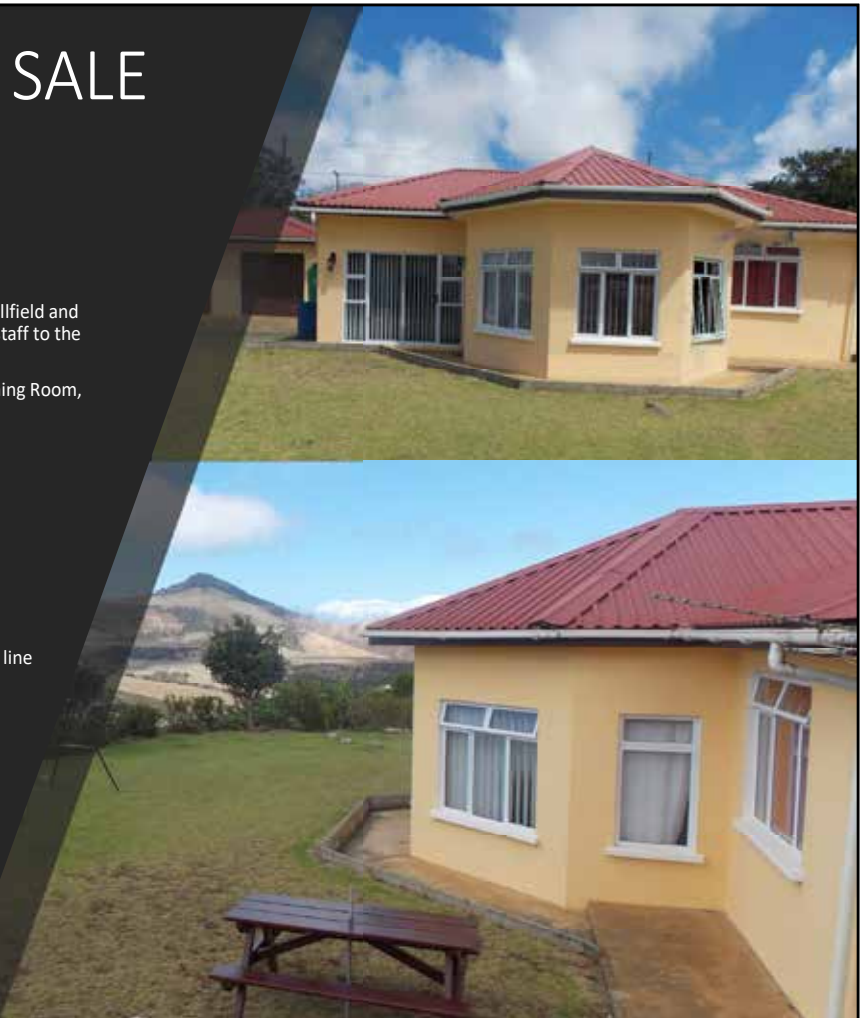
5-minute walk to main grocery store in Longwood

10-minute drive to local Airport

Interested persons can contact

Marvin and Michelle via email, for more information
marvinandmichelle2909@gmail.com

No time wasters please.



Annual Property & Vehicle Auction including a number of Residential Properties, Building Plots, Land and Vehicles For Sale by Public Auction 29th July 2025 at 6pm, The Market, Jamestown, STHL 1ZZ

Listed for Entry:

- Residential Property Near Hutts Gate
- Residential Property in New Ground
- Residential Property in Deadwood
- Four building plots near New Ground
- Building Plot in Deadwood
- Land in Sandy Bay
- 1961 Land Rover
- 2011 Honda 650cc motorcycle
- Morgan Kit Car

**New Entries Are being accepted until 30th
June 2025.**

**Property Information Packs Available 30th
June 2025**

All enquiries please contact us:

By email: derek@dps.co.sh

or Telephone: 00 290 25836

or WhatsApp: 00 290 67022

or visit us at The Market,
Jamestown, St. Helena,
STHL 1ZZ



Vacancy

Trainee Electrician



Salary for the post will commence at £9,360 per annum (£780 per month), depending on qualifications and experience

Solomon & Company (St Helena) Plc has a vacancy within the Electrical Works Department for a Trainee Electrician.

As the Trainee Electrician you will assist with in-house and private electrical jobs to complete them in a timely manner while ensuring high standards of work are delivered at all times in accordance with Company requirements and local regulations.

Interested Persons Should:

- Possess Grade C in GCSE Maths or English, or equivalent.
- Have excellent communication skills.
- Have a customer focused approach with excellent customer service skills.
- Have an aptitude for problem solving and demonstrate persistence when troubleshooting issues.
- Be committed to continuous learning and development in an ever-changing industry.
- Demonstrate attention to detail.
- Have a positive work ethic.
- Be self-disciplined and self-motivated.
- Be able to work effectively in a team environment.
- Have the ability to undertake physically demanding and manual handling tasks as well as work in confined spaces.
- Be flexible to work outside of normal working hours.

For further information, including the Company's attractive benefits package contact:

Mr Ian Gough, General Manager (Services & Properties) via ☎ 22380 📧 gm-services.properties@solomons.co.sh

Application forms may be collected from Solomons Main Office Reception, Jamestown or alternatively an electronic copy can be requested via hadmin@solomons.co.sh and completed forms should be returned to Anya Thomas, Human Resources Organisation & Development Officer, Solomons Main Office, Jamestown by **26 June 2025**.

Solomon & Company (St Helena) Plc offers an attractive benefits package to Employees which includes but are not limited to:

- ★ Pension Contributions
- ★ Staff Discounts

Vacancy

Artisan



Salary for the post will commence at £11,280 per annum (£940 per month), depending on qualifications and experience

Solomon & Company (St Helena) Plc has a vacancy within the Building Works Department for an Artisan.

As the Artisan you will perform a variety of tasks appropriate to the skills of a multi-skilled craftsman, ensuring all work is completed by the specified deadlines and which meets the required quality standards.

Interested Persons Should:

- Be competent in Maths & English
- Ideally have NVQ Level 2 or 3 in either carpentry, painting or construction
- Have at least 2 years experience working in the trade industry
- Have a Safety Awareness Certificate, or have undertaken Health & Safety on the worksite training and have the ability to carry out risk assessments
- Be knowledgeable of tools, equipment and materials common to the trade industry
- Have the necessary skills in the construction, repair and restoration in properties refurbishment or new builds
- Have the ability to operate power & hand tools
- Be able to make assessments of job requirements, estimate material requirements and provide method statements
- Be able to follow technical drawings and plans
- Have a clean & valid Driver's License in classes A & C
- Have a customer focused approach with excellent customer service skills
- Be able to work as part of a team as well as independently

For further information, including the Company's attractive benefits package contact:

Mr Ian Gough, General Manager (Services & Properties) via ☎ 22380 📧 gm-services.properties@solomons.co.sh

Application forms may be collected from Solomons Main Office Reception, Jamestown or alternatively an electronic copy can be requested via hadmin@solomons.co.sh and completed forms should be returned to Anya Thomas, Human Resources Organisation & Development Officer, Solomons Main Office, Jamestown by **03 July 2025**.

Solomon & Company (St Helena) Plc offers an attractive benefits package to Employees which includes but are not limited to:

- ★ Pension Contributions
- ★ Staff Discounts



JOIN OUR TEAM

CHIEF EXECUTIVE, ST HELENA & ASCENSION

Sure is seeking an inspirational and strategic leader for the St Helena & Ascension Island Business Units

Person specification:

- Passionate, forward thinking with proven experience as a senior leader.
- Substantial commercial knowledge and experience, with a degree in Business and/or Management.
- First class communicator, experienced and skilled at influencing, negotiating, building alliances and maintaining effective relationships, both internally and externally.
- Distinctive organisational skills, committed, proactive and flexible working style.
- An inspiring leader and collaborative team player, capable of cultivating a team-orientated atmosphere, empathetic, and genuinely personable.
- Demonstrable commercial acumen with the ability to innovate and successfully manage change.
- Knowledge of Project Management.

Due to the nature of this position, the post holder must hold a Satisfactory Police Disclosure.

Join us and you can enjoy some of the benefits Sure offers: competitive salary, bonus scheme, company pension and continued professional development.

**To apply send your CV to
recruitment.SADG@sure.com
by 23 June, 2025**

We are proud of the way we do things

We work together as One Team. We strive for Customer Satisfaction. We are Reliable. We have a Passion for Technology & Learning. We are Community & Sustainability focused.



ASCENSION ISLAND GOVERNMENT

VACANCY NOTICE

Director of Operations and Facilities

Total package value up to £69,466 per annum

Comprising salary of up to £52,288 plus food and utilities allowances, housing and other benefits – details below.

About the role

This is a key leadership position within the Ascension Island Government. As Director of Operations and Facilities, you'll guide the strategic delivery of essential public services, infrastructure projects, and estate management. As part of the Senior Management Team, you'll help shape the island's long-term development and resilience.

What you'll do

You will lead a large multidisciplinary team, managing a wide operational portfolio including facilities, transport, marine and harbour services, waste management, fuel logistics, and health and safety. You'll oversee the planning and execution of infrastructure projects, direct routine and preventative maintenance programmes, and ensure effective public service delivery. You'll also develop policy, advise senior leaders, and represent AIG in negotiations with UK government and other external stakeholders. Through your leadership, you will drive forward improvements in sustainability, safety, and operational efficiency across the directorate.

What you'll bring

You'll be an experienced leader with a strong background in infrastructure, construction, engineering, or facilities management. You will hold a degree or equivalent level of experience in a relevant discipline such as engineering, construction, or surveying. You'll have a proven track record in project management and delivering complex public service and infrastructure programmes, ideally in challenging or remote environments. Your ability to lead large, multidisciplinary teams, build effective relationships with internal and external stakeholders will be key to your success.

Sound knowledge of health and safety management is essential, along with a valid driving licence. You'll bring personal resilience, sound judgment, and a collaborative leadership style that supports a positive workplace culture based on dignity, respect, and accountability.

What's it like to live and work on Ascension?

Ascension is a small volcanic island, situated in the South Atlantic, with a warm stable climate (26-34 °C). We are part of the wider UK Overseas Territory of Saint Helena, Ascension and Tristan da Cunha, situated approximately 1,000 miles from the mainland of Africa and 800 miles from our nearest neighbour, the island of St Helena. To thrive here in this high profile role, you must be resilient, adaptable and able to live and work in a remote environment and small community.

What we offer

In addition to an annual salary of up to £52,288 (taxable on Ascension), the role attracts an accompanied status contract and the following benefits:

- Rent free furnished accommodation worth £3,000 pa (taxable benefit)
- An Accompanied status food allowance of £7,680 pa accompanied, or Single status £3,840 pa
- An electricity allowance worth £3,296 pa
- A water allowance worth £3,202 pa accompanied, or £1,921 single status
- Relocation costs for your personal effects, including assistance with the shipment of a vehicle
- One mid-contract return journey to your country of recruitment
- 30 days' annual holiday (with an additional 9 days public holidays)
- A gratuity payable on the successful completion of a 2-year contract
- Free primary dental and medical care and off island, with medical referral if required including medivac arrangements in an emergency.
- Free schooling for dependent children from 4 to 16 years.
- Free annual travel insurance
- Death in Service insurance

The appointment will be subject to:

- Satisfactory employment references
- Basic Criminal Records Check
- Satisfactory Medical and Dental Clearance (employee and any accompanying dependants)

Closing date: Monday 14 July 2025

Interviews: Week Commencing 21 July 2025 (via video call if off island)

Start date: As soon as possible

For more information, a full job description, and to apply, visit: www.ascension.gov.ac/lifestyle-and-employment/working-here/

If you have any questions about the role, email: recruitment@ascension.gov.ac

Join us! We are recruiting...



St Helena
Government

Mechanic (Fixed term – 2 years) (£9,781 per annum)

The Transport Division is seeking to recruit a Mechanic to join their team. If you are a motivated individual who has the ability to work independently when required and have a sound knowledge of practical mechanics and diagnostics with good attention to detail this could be a good opportunity for you. The role requires you to be fully conversant in applying health and safety procedures to guarantee the safety of employees and products/services ensuring that the vehicles and heavy plant equipment are maintained in a safe operational condition.

Contact us for more information and a discussion.

Enquiries: Theodore Fowler on Tel No 23643 or Email
Garage.Manager@helanta.co.sh

Closing date: 25 June 2025

Shortlisting date: 30 June 2025

Interview date: 08 July 2025

Head of Health & Safety (£30,256 per annum)

As Head of Health and Safety for the Public Service, the role is accountable for updating and implementing Health and Safety (H&S) across the St Helena Public/Civil Service. Ensuring the SHG H&S policies, legislation, and procedures are fit for purpose, adhere to our obligations, and local laws. The person will proactively advise the Public Service on how to protect the health, safety and welfare of all employees in the workplace. This is a new role and the person must have significant experience on health and safety matters, implementing change from strategic to operational levels in diverse business environments. The post holder will ensure that health and safety is delivered in a clear, pragmatic and achievable manner for over 800 personnel across all business streams.

Contact us for more information and a discussion.

Enquiries: Alex Mitham on Tel No 25870 or Email
alex-richard.mitham@sainthelena.gov.sh

Closing date: 25 June 2025

Shortlisting date: 30 June 2025

Interview date: 14 July 2025

Benefits

Leave – 30 days leave per annum, plus public holidays

Pension – 15% pension contribution by SHG into approved defined contribution pension scheme

Training and Development

Paid sickness absence

How to apply

To access job profiles and application forms online, visit www.sainthelena.gov.sh/government/vacancies Alternatively, these are available in paper format from Central Human Resources and Organisational Development at The Castle, Jamestown.

For further information, please contact the recruitment team on telephone number **22470** or via the email address below.

Applications should be submitted through the Director/Line Manager (where applicable) to the Human Resources Officer by email recruitment@sainthelena.gov.sh or paper copies delivered to the Human Resources Officer by the closing date.

To be considered for our vacancies, you must complete our application form. Please do not submit your CV.

The St Helena Public Service welcomes all applications from across our whole community, including our St Helenian diaspora wishing to return to St Helena. If you are a St Helenian currently living and working overseas, please contact us at recruitment@sainthelena.gov.sh to discuss how we can support you.

SHG positively accepts applications from all members of the community, regardless of age, gender, disability, age, sexual orientation, religion or belief and will consider all applications on the basis of merit assessed against the role profile and person specification. All appointments are subject to the successful candidate providing satisfactory clearances, which include a medical check, vetting / DBS clearance and references. SHG reserves the right to have information provided on or with the application independently verified. Benefits are subject to change and may vary according to role.

Join us!

We are recruiting...



**St Helena
Government**

Senior HR Assistant (£9,781 per annum)

Here is a great opportunity to start your career in HR! Central Human Resources is seeking to recruit a motivated and enthusiastic individual to join our HR Transactional team. In this post, you will be responsible for undertaking a range of HR transactional processes to ensure the delivery of a high quality HR service. Key areas include recruitment and selection, processing of leavers, contractual changes and providing advice on employment related policies and procedures.

Contact us for more information and a discussion.

Enquiries: Sharina Williams on Tel No 22470 or Email
Sharina.williams@sainthelena.gov.sh

Closing date: 03 July 2025

Shortlisting date: 09 July 2025

Interview date: 17 July 2025

Transport Service Manager (£12,049 per annum)

As the Transport Service Manager, you will be responsible for supporting the Transport Trading Account operations that underpin the delivery of an effective and efficient transport service including plant/equipment for the Public Service; and, the provision of plant and equipment for public hire in the absence of supply from the private sector.

Contact us for more information and a discussion.

Enquiries: Nicholas George on Tel No 23643 or Email
vehicle.fleet@healanta.co.sh

Closing date: 03 July 2025

Shortlisting date: 09 July 2025

Interview date: 17 July 2025

Benefits

Leave – 30 days leave per annum, plus public holidays

Pension – 15% pension contribution by SHG into approved defined contribution pension scheme

Training and Development

Paid sickness absence

How to apply

To access job profiles and application forms online, visit www.sainthelena.gov.sh/government/vacancies. Alternatively, these are available in paper format from Central Human Resources and Organisational Development at The Castle, Jamestown.

For further information, please contact the recruitment team on telephone number **22470** or via the email address below.

Applications should be submitted through the Director/Line Manager (where applicable) to the Human Resources Officer by email recruitment@sainthelena.gov.sh or paper copies delivered to the Human Resources Officer by the closing date.

To be considered for our vacancies, you must complete our application form. Please do not submit your CV.

The St Helena Public Service welcomes all applications from across our whole community, including our St Helenian diaspora wishing to return to St Helena. If you are a St Helenian currently living and working overseas, please contact us at recruitment@sainthelena.gov.sh to discuss how we can support you.

SHG positively accepts applications from all members of the community, regardless of age, gender, disability, age, sexual orientation, religion or belief and will consider all applications on the basis of merit assessed against the role profile and person specification. All appointments are subject to the successful candidate providing satisfactory clearances, which include a medical check, vetting / DBS clearance and references. SHG reserves the right to have information provided on or with the application independently verified. Benefits are subject to change and may vary according to role.

Join us! We are recruiting...



St Helena
Government

BIOT Preparedness Project Manager (Rate of Pay: competitive, dependant on experience)

Central Support Services are seeking to recruit a Project Manager on a casual contract basis to coordinate, plan and manage activities to ensure St Helena Government are suitably prepared in the event further migrants arrive on the British Indian Overseas Territory and are subsequently sent to St Helena. You will be required to communicate and interact fully across SHG and the private sector, and to provide oversight and reporting on key project activities being undertaken. A logical approach and the ability to communicate clearly is essential. Previous experience managing projects is desirable.

Please note that as a Casual Worker you will only be entitled to receive payment for the hours worked. Annual leave etc. will not apply. This role is funded by the FCDO in support of BIOT planning work.

This role is advertised to start as soon as possible therefore candidates will be shortlisted on submission of interest and the advert will close when we have successfully appointed. We can share the terms of reference for this role on request. To apply please submit a statement outlining your interest and suitability for this role to recruitment@sainthelena.gov.sh

Contact us as below for more information and a discussion.

Enquiries: **Stephen Thwaites** (Governor's Office) Tel: 25393
Susan O'Bey (Chief Secretary) Tel: 22525
Tasha Harris (Governor's Office) Tel: 22869

How to apply

For further information, please contact the recruitment team on telephone number **22470** or via the email address below.

Applications should be submitted through the Director/Line Manager (where applicable) to the Human Resources Officer by email recruitment@sainthelena.gov.sh or paper copies delivered to the Human Resources Officer.

The St Helena Public Service welcomes all applications from across our whole community, including our St Helenian diaspora wishing to return to St Helena. If you are a St Helenian currently living and working overseas, please contact us at recruitment@sainthelena.gov.sh to discuss how we can support you.

SHG positively accepts applications from all members of the community, regardless of age, gender, disability, age, sexual orientation, religion or belief and will consider all applications on the basis of merit assessed against the role profile and person specification. All appointments are subject to the successful candidate providing satisfactory clearances, which include a medical check, vetting / DBS clearance and references. SHG reserves the right to have information provided on or with the application independently verified. Benefits are subject to change and may vary according to role.

Join us! We are recruiting...



St Helena
Government

1:1 Teaching Assistant/ Support Assistants (St Helena Secondary School) (£8,725 - £9,032 per annum)

Do you have a passion for Education? We are seeking to recruit a Teaching Assistant to provide assistance to the class teacher by supporting teaching and learning in the school/classroom environment. The individual needs to be committed to safeguarding and promoting the welfare of children, young people and vulnerable adults and have good communication skills to be able to communicate between students, parents and colleagues.

Contact us for more information and a discussion.

Enquiries: Carolyn Yon on Tel No 24290 or Email:
carolyn.yon@sainthelena.edu.sh

Closing date: 27 June 2025

Shortlisting date: 02 July 2025

Interview date: 15 July 2025

Fixed Term 1:1 Teaching Assistants/Support Assistants (St Paul's Primary)

General Teaching Assistant (St Paul's Primary) 1 permanent & 1 fixed-term up to Aug 2026

(£8,725 - £9,032 per annum)

Do you have a passion for Education? We are looking to recruit a Teaching Assistant to provide assistance to the class teacher by supporting teaching and learning in the school/classroom environment. The individual needs to be committed to safeguarding and promoting the welfare of children, young people and vulnerable adults and have good communication skills to be able to communicate between students, parents and colleagues.

Contact us for more information and a discussion.

Enquiries: Patricia Williams Tel No 24737 or Email
patricia.williams@sainthelena.edu.sh

Closing date: 27 June 2025

Shortlisting date: 02 July 2025

Interview date: 17 July 2025

Benefits

Leave – 30 days leave per annum, plus public holidays

Pension – 15% pension contribution by SHG into approved defined contribution pension scheme

Training and Development

Paid sickness absence

How to apply

To access job profiles and application forms online, visit www.sainthelena.gov.sh/government/vacancies Alternatively, these are available in paper format from Central Human Resources and Organisational Development at The Castle, Jamestown.

For further information, please contact the recruitment team on telephone number **22470** or via the email address below.

Applications should be submitted through the Director/Line Manager (where applicable) to the Human Resources Officer by email recruitment@sainthelena.gov.sh or paper copies delivered to the Human Resources Officer by the closing date.

To be considered for our vacancies, you must complete our application form. Please do not submit your CV.

The St Helena Public Service welcomes all applications from across our whole community, including our St Helenian diaspora wishing to return to St Helena. If you are a St Helenian currently living and working overseas, please contact us at recruitment@sainthelena.gov.sh to discuss how we can support you.

SHG positively accepts applications from all members of the community, regardless of age, gender, disability, age, sexual orientation, religion or belief and will consider all applications on the basis of merit assessed against the role profile and person specification. All appointments are subject to the successful candidate providing satisfactory clearances, which include a medical check, vetting / DBS clearance and references. SHG reserves the right to have information provided on or with the application independently verified. Benefits are subject to change and may vary according to role.

Join us! We are recruiting...



St Helena
Government

Fixed Term Vocational Instructor (Automotive) (£12,764 per annum)

Are you interested in working with young people and want to be a part of shaping their future? Then join the team and become a Vocational Instructor at SHSS. You will be expected to contribute to the development of appropriate syllabi, schemes of work and high quality resources for use with students. You must have the required qualifications and demonstrable experience/skills, must have experience in IT applications, be committed to safeguarding and promoting the welfare of young people, and have good communication skills and be able to interact with students, parents and colleagues.

Contact us for more information and a discussion.

Enquiries: Isabel Andrews on Tel No 24290 or Email isabel.andrews@sainthelena.edu.sh

Closing date: 04 July 2025

Shortlisting date: 11 July 2025

Interview date: 24 July 2025

Auxiliary Worker (St Paul's Primary) (£7,280 per annum)

The Education & Employment Directorate is seeking to recruit a suitably qualified person to fill the post of Auxiliary Worker at St Paul's Primary School. The post holder will be responsible for the supervision of pupils before and after school, during mid-morning and lunch periods and to accompany and supervise nursery pupils being transported home at mid-day.

Contact us for more information and a discussion.

Enquiries: Patricia Williams Tel No 24737 or Email patricia.williams@sainthelena.edu.sh

Closing date: 04 July 2025

Shortlisting date: 09 July 2025

Interview date: 18 July 2025

Benefits

Leave – 30 days leave per annum, plus public holidays

Pension – 15% pension contribution by SHG into approved defined contribution pension scheme

Training and Development

Paid sickness absence

How to apply

To access job profiles and application forms online, visit www.sainthelena.gov.sh/government/vacancies Alternatively, these are available in paper format from Central Human Resources and Organisational Development at The Castle, Jamestown.

For further information, please contact the recruitment team on telephone number **22470** or via the email address below.

Applications should be submitted through the Director/Line Manager (where applicable) to the Human Resources Officer by email recruitment@sainthelena.gov.sh or paper copies delivered to the Human Resources Officer by the closing date.

To be considered for our vacancies, you must complete our application form. Please do not submit your CV.

The St Helena Public Service welcomes all applications from across our whole community, including our St Helenian diaspora wishing to return to St Helena. If you are a St Helenian currently living and working overseas, please contact us at recruitment@sainthelena.gov.sh to discuss how we can support you.

SHG positively accepts applications from all members of the community, regardless of age, gender, disability, age, sexual orientation, religion or belief and will consider all applications on the basis of merit assessed against the role profile and person specification. All appointments are subject to the successful candidate providing satisfactory clearances, which include a medical check, vetting / DBS clearance and references. SHG reserves the right to have information provided on or with the application independently verified. Benefits are subject to change and may vary according to role.

Join us! We are recruiting...



St Helena
Government

Care Assistants (Ebony View) (£10,213 per annum) (Available for local interest only)

Are you interested in the well-being of clients within the Learning Disabilities units, encouraging independence and providing high quality, holistic care? If so, Ebony View has an opportunity for you to join their team as a Care Assistant.

Contact us for more information and a discussion.

Enquiries: Kelly Hopkins on Tel No 23343 or Email
kelly.hopkins@sainthelena.gov.sh

Closing date: 04 July 2025

Shortlisting date: 09 July 2025

Interview date: Week commencing 21 July 2025

Handyman Driver (£7,960 per annum)

The Health & Social Care Portfolio is currently seeking to recruit a Handyman Driver who will be responsible for the upkeep and maintenance of the Health & Social Care premises and will have a vital role to play in making the environment safe and comfortable. You will also be required to perform driving duties to support the smooth running of the service.

Contact us for more information and a discussion

Enquiries: Michael Gaga - Hale on Tel No. 22500 or Email
michael.gaga-hale@sainthelena.gov.sh

Closing date: 03 July 2025

Shortlisting date: 09 July 2025

Interview date: 21 July 2025

Benefits

Leave – 30 days leave per annum, plus public holidays

Pension – 15% pension contribution by SHG into approved defined contribution pension scheme

Training and Development

Paid sickness absence

How to apply

To access job profiles and application forms online, visit www.sainthelena.gov.sh/government/vacancies Alternatively, these are available in paper format from Central Human Resources and Organisational Development at The Castle, Jamestown.

For further information, please contact the recruitment team on telephone number **22470** or via the email address below.

Applications should be submitted through the Director/Line Manager (where applicable) to the Human Resources Officer by email recruitment@sainthelena.gov.sh or paper copies delivered to the Human Resources Officer by the closing date.

To be considered for our vacancies, you must complete our application form. Please do not submit your CV.

The St Helena Public Service welcomes all applications from across our whole community, including our St Helenian diaspora wishing to return to St Helena. If you are a St Helenian currently living and working overseas, please contact us at recruitment@sainthelena.gov.sh to discuss how we can support you.

SHG positively accepts applications from all members of the community, regardless of age, gender, disability, age, sexual orientation, religion or belief and will consider all applications on the basis of merit assessed against the role profile and person specification. All appointments are subject to the successful candidate providing satisfactory clearances, which include a medical check, vetting / DBS clearance and references. SHG reserves the right to have information provided on or with the application independently verified. Benefits are subject to change and may vary according to role.

Quality Window Blinds



ORDERS CAN BE MADE FOR.

Vertical , Venetian and Roller Blinds, from colour samples ,and to suit your Measurements.
Single and Double glaze Aluminium Windows and Doors .

FOR SALE CONTACT 23163.

400 Ltr Concrete mixer with 5.5 HP Honda engine .
Aluminium Patio Slide doors.
1800 Watt Vacuum cleaners.
1800 mm Fold tables .
Kids - Swing glider See saw .
Fold Multi function Exercise press up boards
Olympic 2.1m weight lifting Bar.
16mm Stainless Steel Treaded Rod .
Safety Specs
Ford lazer /Trazer Exhaust and parts.
48 Volt GO KART with 3 speeds and Disc brake.
400 x 200 x 200mm Moulded Concrete Blocks
For sale PROPERTY WITH 300 SQUARE METRES OF FLOOR SPACE AT HUTTS GATE.
Car creeper.
6 Ton Ratchet Axle stands
200 mm Scaffold Caster Wheels on Base jacks .
ESTIMATES FOR HOUSE BUILDING.

St Helena Football Association AGM

The St Helena Football Association held their Annual General Meeting on Monday. The outgoing Chairman David Price gave the 19 people present his yearly report. The football season was successful, the accounts for 2024/25 were presented and amendments to the constitution were agreed.

During the meeting a new committee was elected: -

Chairperson - Martin 'Kunya' Buckley
Treasurer - Keith Yon
Secretary - Kyle 'Bush' Yon
Members - Johnny Isaac, Kyle Shoesmith, Jordan Yon and Samantha Leo.

It is anticipated there might be six teams participating in upcoming season which hopefully will start on 5th July.

It was agreed at the meeting that an entrance fee of £300 per team will need to be paid by 30th June. A follow up meeting is scheduled with the committee and team captains to discuss all things concerning the upcoming season.

Thanks were extended to David Price for his support of the St Helena Football Association during his time serving on the committee. Good wishes were extended to him as he leaves the island in a few weeks' time.



The Premier League Summer Series will run from July 26 - August 3, 2025 and will take place at three venues. All matches will kick off at different times, with each team completing three fixtures.

Saturday, July 26 @ MetLife Stadium, New Jersey



Match 1: Everton vs AFC Bournemouth (16:00 ET kick-off)
Match 2: Manchester United vs West Ham United (19:00 ET kick-off)
Greenwich Mean Time (GMT) is 4 hours ahead of Eastern Time (ET)

Wednesday, July 30 @ Soldier Field, Chicago



Match 1: West Ham United vs Everton (17:30 CT kick-off)
Match 2: Manchester United vs AFC Bournemouth (20:30 CT kick-off)

Greenwich Mean Time (GMT) is 4 hours ahead of Eastern Time (ET)

Sunday, August 3 @ Mercedes-Benz Stadium, Atlanta



Match 1: AFC Bournemouth vs West Ham United (14:00 ET kick-off)
Match 2: Manchester United vs Everton (17:00 ET kick-off)

Will FIFA Screw Up the World Cup

The Club World Cup promoted by FIFA is bigger than it has ever been. Bigger does not always mean better. The competition had a stuttering start, followed by false starts. It was first contested in 2000 as the FIFA Club World Championship. It was not held from 2001 to 2004 due to a combination of factors, chiefly the collapse of FIFA's marketing partner International Sport and Leisure (ISL). It returned in 2005 as an annual competition until 2023. Following the 2023 edition, the tournament was again revamped to a competition recurring every four years, starting in 2025.

On Monday, Chelsea played Los Angeles in front of tens of thousands of empty seats. The attendance was 22,137 in a stadium that can hold 71,000.



A small middle tier seemed to be mostly full, but a larger bottom tier was more than half empty

What Went Wrong?

Chelsea played at the same stadium two years ago - and almost sold out with more than 70,000 fans watching them face Newcastle in a friendly tournament named the Premier League Summer Series. The ground is home to the US Major League Soccer best-supported football team, Atlanta United, who average 44,000 fans per match. The stadium also hosts the USA men's and women's national teams.

Some sport journalists wondered why a game involving Los Angeles was staged at Atlanta, 2,000 miles away. The Rose Bowl in Los Angeles is one of the twelve Club World

Cup stadiums.

US sport commentators gave their judgement. One said, "The people aren't here because it's Monday at 3pm," he said. "Frankly I am surprised there are as many as there are." The message being, all citizens of good standing are at work when the match was played. And, "It's a tournament that doesn't mean a lot to people in the US because it's new. I would imagine paying to come to a tournament you don't know didn't appeal, because the World Cup is coming next year and people are trying to save money for that."

Another said, "When you come here you have to do a lot of marketing," he said. "You can't just expect people to turn up. There was no true local organising committee in the US because FIFA were doing it all in-house. We will all show up for the World Cup next summer, but for the Club World Cup they needed to market it to explain." Another commentator said the attendances were disappointing despite FIFA's hype. Contradictory, but either way it is not encouraging news.

The ticket pricing is 'flexible'. Prices start high, very high, and then reduced if the demand is low. For the opening game the prices started at \$349 in December and reduced to \$55.75 before the game. Even big names like Lionel Messi have not filled the stadiums.

As things stand, among the most expensive tickets for the group stages involve Real Madrid. FIFA says, "strong international appeal has seen supporters from more than 130 countries book their ticket to the competition. The top ten countries per ticket sales are the United States, followed by club fans from Brazil, Argentina, Mexico, Canada, Germany, Saudi Arabia, France, Japan and Spain." However, FIFA president Gianni Infantino, for whom the Club World Cup has been a pet project, maintained as recently as April that he was "not worried at all about ticket sales".

The new Club World Cup format involves 32 teams playing in a tournament starting in June and continuing for a full month. Many leagues are opposed to the competition because there is already no off-season for the most successful clubs, the fixtures are overcrowded and in danger of affecting players' health. European leagues are suing FIFA; players are becoming more alienated and criticism of what is seen as a badly planned competition has openly drawn scorn. Concern is also raised that at least some of the perceived mistakes will surface again when the US is one of the three countries staging the football World Cup.

LOCAL SPORTS

Golf Report: Sunday 15th June

Report by the St Helena Golf Club

St Helena Golf Club hosted an 18-hole no-handicap event, took place on Sunday, June 15, 2025. The weather was favourable, with dry conditions and some sunny spells. A good turnout of 18 players participated in the event.

Martin Joshua emerged as the winner, securing solo first place with a score of 79. The first prize was sponsored by Blue Lantern restaurant. Larry Legg followed closely, taking second place with a score of 80. The ladies' prize was won by Laura Buckley, who scored 93. There was no winner for the two-ball pool. Congratulations to the winners and a big thanks to Blue Lantern for sponsoring the competition.



The St Helena Golf Club is gearing up to host its biggest event of the year, the 4-day SHGC 2025 Open Championship. The championship will commence on Saturday, June 21, 2025. Players are reminded that a group photoshoot will take place at 09:30 am before the tee-off. The subsequent rounds will be played on June 22nd, June 28th, and final round on June 29th, 2025, followed by a meal sponsored by the club. We look forward to your participation.

Happy swinging....!

MACS SHIPPING SCHEDULE UPDATE



WHATEVER
YOU NEED
TO SHIP

	BRIGHT SKY 251211	GREEN MOUNTAIN 251213	GOLDEN KAROO 251216
Immingham	10-May	14-Jun	12-Jul
	KAROLINE 251706	KAROLINE 251707	KAROLINE 251708
Cape Town	14-Jun	20-Jul	20-Aug
Rupert's Bay	23-Jun	28-Jul	28-Aug
Ascension Island	-	02-Aug	-
	KAROLINE 251806	KAROLINE 251807	KAROLINE 251808
Cape Town	06-Jul	18-Aug	01-Sep

*schedule may change without prior notice. For the latest updates, please visit our website.



Moving your cargo globally with flexibility and care.

Get in touch with us: macship.com

CPT +27 21 405 3400 | sthelena.cpt@macship.com

