

THE ST HELENA

INDEPENDENT

Est. 2005



PRICE: £1

independent@helanta.co.sh

VOLUME XXI, ISSUE 1, 19th DECEMBER 2025



They Filmed Another BlockBuster

See Page 4...

Start of a New Beginning

See Page 2...



1 2 3 4 5 6

Do Your Tyres Wear Out Your Car?

See Page 5...

1 3 3 4 2 e



Super Flu or More of the Same...



Science...

or Slang?

See Page 7...

Start of a New Beginning

The three Primary Schools under the names Pilling Primary, St Paul's Primary & Harford Primary finally close their chapter on Friday 12th December.

They Will return in January 2026 under Key Stage 1 & Key Stage 2 Schools using the premises of Pilling Primary & St Paul's.

We have dedicated these pages to showing you a few of their last events under the previous organisation in pictures.



Start of a New Beginning



Vacancy

Baker



Salary for the post will commence at £14,484 per annum (£1,207 per month)

Solomon & Company (St Helena) Plc has a vacancy within The Bakery for a Baker.

As the Baker you will be required to carry out duties related to the production and packaging of high-quality Artisan and Bread products and Danish pastries, and to ensure the agreed production is met in adherence to agreed quality standards, along with deputising in the absence of the Senior Baker (Operations).

Interested Persons Should:

- Possess 3-5 years proven experience as a Baker in the preparation & production of Artisan Bread and Bread Products
- Proficiency in baking techniques, including knowledge of various bread, pastry, and dessert recipes.
- Have knowledge and be proficient in the use of baking equipment.
- Be self-motivated, organised, innovative and able to motivate and lead the team.
- Have capacity to develop new recipes and innovate existing ones to enhance the bakery's offerings.
- Have certification in RSPH Level 2 Award in Food Safety and Hygiene in Catering or equivalent
- Possess Grade C or above in GCSE English & Maths, or equivalent and possess a qualification or professional competence in Baking
- Be able to achieve the delivery of commercial scale production plans
- Possess excellent interpersonal and communication skills
- Be able to work unsocial hours and undertake physically demanding and manual handling tasks

For further information, including the Company's attractive benefits package contact:

Miss Daryl Legg, General Manager (Productions) via ☎ 22380 📧 gm-productions@solomons.co.sh

Application forms may be collected from Solomons Main Office Reception, Jamestown or alternatively an electronic copy can be requested via hradmin@solomons.co.sh and completed forms should be returned to Anya Thomas, Human Resources Organisation & Development Officer, Solomons Main Office, Jamestown by **07 January 2026**.

Solomon & Company (St Helena) Plc offers an attractive benefits package to Employees which includes but are not limited to:

☛ Pension Contributions

☛ Staff Discounts

Come and find me: the Sequel

Two weeks ago, the award-winning film director and producer Darren Peens stepped off the plane one more time. Darren has produced several films about St Helena and most notably the tourism film 'Come and Find Me', <https://www.youtube.com/watch?v=ATenzRrnCJc> , released in September 2024 on World Tourism Day.

It was a different kind of film about St Helena, a new concept for a small emerging destination; internationally it was thought so too. Within just 10 months of it's' release, Come and Find Me picked up two international awards. Firstly, in March at Japan's World Tourism Film Festival, (#jwttf) it was awarded the 'Directors Choice' special award, and in June received a Gold Award at the International Tourism Film Festival Africa #itffa.

Darren's return to St Helena film to produce the sequel in collaboration with private sponsors, notably Deans Court in the UK and several other sponsors, off and on-island, including the St Helena Independent and St Helena Tourism.

The film producers have expressed delight at the collaborative workings between all parties and the marked spirit of working together on another important project to promote St Helena. While here to film a sequel to Come and Find Me, Darren received another invite to submit a film for the Japan film festival 2026



Assisting Darren on the film was St Helena's own Louis Youde of smudgedogmedia, pictured here with Darren and Katie-Ray Williams. Katie-Ray returns for the sequel as leading actress with Selene Gough co-starring.

The second film while carrying familiar throwbacks to the first film and a significantly different narrative, shot over the many stunning locations on St Helena which Darren describes as a "directors dream"

Darren departed St Helena on Sunday 14th December. Now, post production begins, and the professional editing process in preparation for the film's release in early 2026 on what is expected to be several global platforms.



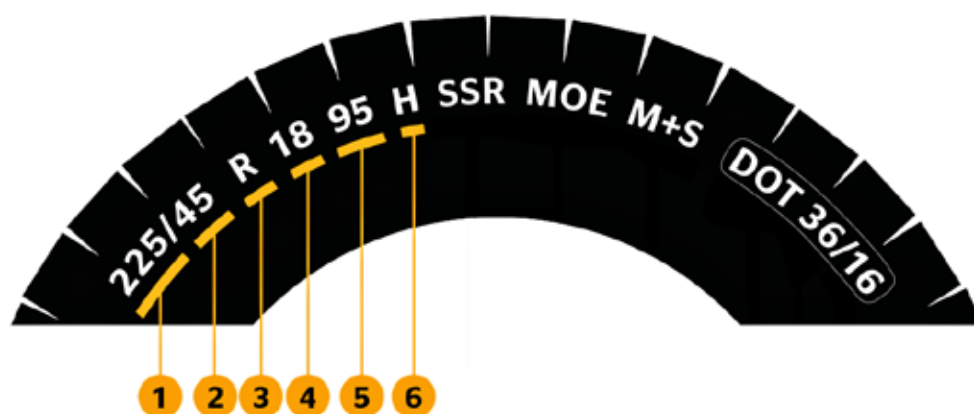
The Crew

Are Your Car Tyres Working Against the Car Engine and Suspension?

Road resurfacing on long stretches of the busier island roads means we have a smoother ride. The potholes that bash our cars about are gone, so are broken road surfaces, stones and rocks. The slurry surface needs to be reapplied every few years, they say, but we are used to that. Slurry is cheaper and quicker to lay, so maybe it will be applied more frequently, if needed, than before. We don't have large volumes of traffic or heavy vehicles, so that helps.

To take full advantage of the new road maintenance system, we can take a closer look at how well we keep our car tyres in good condition. There is much more to this than making sure you buy the right size tyres to replace the old ones. There is more to new tyres than many people everywhere think.

Buying the right tyre includes more than getting the right size. Just as important is a tyre that's made for the load of the vehicle. Tyres are also designed and made according to the speed they need to travel. The main purpose of a tyre is to transfer to the ground as efficiently as possible the power and energy produced by the engine. Doing this means the fuel you buy goes further, wear and tear is minimised. For your tyres to achieve this, they always need to be at the correct tyre pressure. The tyres should not only be aligned; they need balancing too. With proper tyre maintenance, the engine gets a smoother ride as well as you. The suspension does not work so hard either.



Reading Your Tyre

1. The width of the tyres in millimetres
2. Measurement of sidewall height in relation to the width
3. Tyre construction
4. Rim diameter in inches
5. Load index (the maximum load capacity of the tyre)
6. Speed index (the maximum speed of the tyre)

Some More Detail

Tyre width

This number is the nominal width of the tyre (in millimetres) from one sidewall to the other.

Sidewall height in relation to width

This number is the tyre's aspect ratio – essentially the height of the tyre's profile outward from the rim represented as a percentage of the tyre's width.

Tyre Construction

This letter indicates the construction of the tyre casing - "R" for Radial, "B" for Bias-ply, and "D" for Diagonal.

Rim diameter

The number represents the diameter of the wheel rim in inches.

Load index

Code for the maximum load a tyre can support when fully inflated.

Are Your Car Tyres Working Against the Car Engine and Suspension?

Speed index

Denotes the maximum speed a tyre can sustain under its recommended load capacity.

Other Numbers

Can indicate Run-flat tyres, suitable for extreme conditions (mud, snow), safety compliance, date of manufacture, reinforced tyres, Electric Vehicle tyre load.

Balancing Tyres

A well-balanced tyre distributes weight around the entire circumference of the tyre. Wheels that are out-of-balance can cause uncomfortable vibrations while driving. It also results in premature wear of suspension and steering components, rotating parts, and tyres.

Tyre Pressure

Accidents can be caused by under-inflated tyres. Frequent checks, and keeping to the recommended tyre pressure means you'll be saving money, and you could avoid an accident.

Save money. Tyres wear out faster if they're under-inflated, and they wear irregularly if they're over-inflated – so in both cases you'll need to buy new tyres more often. Proper care stabilises the tyre structure and can extend the average life of a tyre.

Fuel Efficiency. If your car's tyres are under-inflated by just 0.3 bar, rolling resistance is increased, so your vehicle will consume about 1.5 percent more fuel. Proper inflation means a perfect balance of maximum safety and fuel economy. Your tyres will last longer and you'll reduce your fuel costs.

Safety first. Handling becomes sluggish if the tyres are under-inflated, and dangerous if they're over-inflated, especially if you're cornering too fast. Stopping distance, braking grip and directional stability are all affected. As your tyres struggle to stay on the road, heat builds up, making blowouts more likely and increasing the chances of an accident.

Enjoy a more comfortable ride. Properly inflated tyres influence the responsiveness of the vehicle, and its handling and performance.

Car Tyre Track Alignment

Or wheel alignment/tracking, adjusts your car's suspension angles so wheels are parallel and perpendicular to the ground, ensuring even tyre wear, better handling, and fuel efficiency. Hitting potholes often puts wheels out of alignment.



Happy Motoring!

PROPERTY FOR SALE

- Open to Negotiation

3 Bedroom detached bungalow
Cott Sheds, Longwood

This bungalow sits on approx. 0.20 acres (1,983 sq.m)
House is approx: 15m x 10m (150 sq.m) – including large bay,
Millfield and Deadwood. Offering a pleasant sunny view, including
the flagstaff to the north. The plot is virtually flat.
The room layout is on two levels, with a step down into the Dining
Room, Lounge and Conservatory area.

Main features:

- Master bedroom with En-Suite
- Bathroom with Toilet
- Guest Toilet
- Large garden area
- Double Garage
- Integrated Sewage system, that connects to main sewage line
- 5-minute walk to main grocery store in Longwood
- 10-minute drive to local Airport

Interested persons can contact
Marvin and Michele via email, for more information
marvinmichele2399@gmail.com

No time wasters please.



FOR SALE

Is The UK Sending Us a Super Christmas Present or Just More of the Same

On Monday SHG's Health and Social Care published information about the 'increased risk' of an early outbreak of influenza. Brought to us in the run up to Christmas by visitors from the UK. The announcement informs, "With the high volume of visitors arriving in December from the Northern Hemisphere, St Helena is likely to be affected by the Northern Hemisphere virus." In the UK demand for flu vaccine jabs peaked in September/October but have fallen since to 1 million or less per week. Despite this, stocks are already reported to be low. St Helena cannot get a supply of vaccines until February when infections are likely to be past the peak, and probably all but over. See separate page for full Health and Social Care announcement

Calling it Super Flu is Probably Exaggeration



The UK, US, Canada, Japan and Germany had the flu bug early this year. This winter, a new variant of the H3N2 strain has emerged, proving highly infectious. However, the NHS England medical director has had her knuckles rapped for saying "With record demand for A&E and ambulances and an impending resident doctors strike, this unprecedented wave of super flu is leaving the NHS facing a worst-case scenario for this time of year." Other medical experts have been quick to point out this is misleading, even exaggeration. One expert from Oxford University wrote, "Although this term (super flu) has now been repeated

frequently in the media, it was not intended as a new scientific designation. Although the flu season began early, both the spread of the virus and the severity of illness remain within what experts consider normal for a flu season."

A Professor in Public Health at Edinburgh University weighed in. Calling it super flu was slang and suspecting that 'political spin' is involved. Pushing further on, the Edinburgh Professor wrote, rather sniffily, calling it super flu was a non-scientific term. It is used by some NHS England bosses and taken up by the UK minister for health and the prime minister.

Back at Oxford University, the infectious diseases expert added, "the 'sub-type' of flu that is dominant this year, called influenza A/H3N2, has been around since 1968 and there have been over a dozen such changes (mutations?) in that time. By this definition, we see "super flu" every few years."

The Oxford expert leading the defence for scientific fact also pushed further on. He pointed out, "Because the season started early, it is misleading to directly compare the number of cases and hospitalisations to the same week in previous years. In fact, the situation is comparable to previous years after taking the early season start into account, as a recent analysis my colleagues and I conducted shows."

Science



Prof Devi Sridhar – Edinburgh



Research Fellow James Hay – Oxford

versus Slang



Prof Meghana Pandit – Director NHS England

The professorial points of view are very fine, even very interesting, but where does that leave us?

We are left with no vaccine for a strain of the flu virus which could be more purgatorial than usual. In the past we have had shops and the bank open later and close earlier because so many of their staff are bed-ridden. Schools have closed because teachers have taken to their beds. Will we have all that again?

The main message from Health and Social Care is to start practising the precautions in place for COVID. Wear a mask if thought necessary. Wash your hands often. Never, ever, sneeze in public without covering your mouth. If infected, if possible, stay home. See page 12 for full information.

Christmas Message from the Governor of St Helena

'Seeing Plantation House filled with laughter, conversation and the spirit of community has been one of the greatest pleasures of our tenure'



Christmas is upon us once again. The decoration of houses with amazing light displays never fails to delight. It is similarly delightful to see so many people out and about; aircraft filled to capacity is only good news. At this special time of year, the creativity of the community is on full display, whether it be the Festival of Lights, the school nativity plays or any of the other great events being organised. That positivity is uplifting.

As ever, the past year has been busy; in fact, it is astonishing just how busy it does get on this island. One of the most significant milestones was our general election, a true testament to the strength and vibrancy of our democracy.

With the election of our new government, we have seen new faces and ideas, all committed to continuing the mission of steering St Helena towards greater progress. A dodgy knee (in case you hadn't noticed) will not prevent me and my team from continuing to put our shoulders to the wheel in support.

There have been real achievements over the past year to celebrate. Ruperts port is now complete, so too the roads connecting it to Jamestown. We are also making progress on several other infrastructure and essential equipment projects, all of which will increase the capacity of St Helena to grow. The continual strengthening of the Island's critical national infrastructure is in a way akin to expanding our foundations in such a manner that new opportunities to build are made possible.

But of course, it is always about people. Throughout the year my wife and I have found special joy in opening Plantation House for district receptions, a new initiative this year. It has been truly heartening to welcome so many residents, many for the very first time, into this historic home. Seeing Plantation House filled with laughter, conversation and the spirit of community has been one of the greatest pleasures of our tenure. These gatherings are an enactment of my determination that we respect, celebrate and recognise the incredible good work carried out across St Helena by individuals and groups who give so much to island life.

Respect is essentially about caring for one another. All of us face different challenges, some can go unseen. Putting yourself in someone else's shoes takes effort, but it is the foundation of the sort of kindness communities rely upon to thrive. One aspect of that sort of kindness is recognising that whilst joyful for most, for some in the community Christmas can be especially difficult. For those mourning or struggling, it is my heartfelt wish that the Christmas message of hope will help those in need to find peace and strength.

It would not be one of my Christmas messages if I did not pause to remember and give thanks to all those who will be working over Christmas to deliver essential services and keep our community safe. To those so engaged, I say your dedication merits our respect and is deeply appreciated.

As 2026 draws near, my mind turns to how much more there is to do in the ongoing mission to tackle some of the major challenges we face. The work to develop the education sector is now visible. Although it will herald change, my hope is that we will advance our efforts to retain and attract young families and develop the next generation who are the future of this island.

Developing the economy is also critical and obviously tourism has a key role to play. There are some exciting opportunities being worked up, not least the marathon and adventure week in February. This too builds on the work that has gone before, most recently the highly successful tour of the Titans cricket team. This island has a host of talented sports men and women and initiatives such as this offer a multitude of benefits.

To close. This will be my last Christmas message as Governor. Let me then on behalf of my wife and myself, extend our warmest wishes for a very Merry Christmas. And whatever your faith, may the New Year bring health, happiness, and prosperity to you all.

Chief Minister's Christmas Message 2025

'honesty is not a weakness, it is the starting point for change'



2025 is coming to its end, the festive season of Christmas is once again here. Now is the time to reflect on the year passing, to celebrate, where possible, with family and friends and enjoy each other's company, to feast and spend time together in a way that's hard to do with the busy lives we lead.

Christmas is also a time to enjoy, a time of giving and sharing what we have with others, spreading happiness brings real pleasure and reminds us of how important our community spirit is to our way of life here on St Helena. This year has been a year of transition for our island. We continue to face long-standing challenges linked to our isolation, and like other small communities, rising costs of living, an ageing population, and pressures on families and mental wellbeing.

In our thoughts we must remember that the past year has been difficult for many people on St Helena; the cost of living ever rising putting pressure on everyone, especially the families on low incomes, and the pain many people have experienced with the loss of a loved one. It's at these times that support from our strong island community can get us through the tough times and show us that in this ever-changing world where so many people are suffering unimaginable hardship, we on St Helena have got much to be grateful for. Across all of this work, the community spirit of St Helena - families, volunteers, churches, employers and neighbours, all remain a quiet strength underpinning health and wellbeing on an island facing big demographic and economic shifts.

I have learnt much about the governance and politics of St Helena and met many of the people who behind the scenes both here and overseas are helping to keep our island running.

As 2025 draws to a close we should recognise the progress made this year. We have seen the opening of Rupert's cargo facility and the relocation of port services to Rupert's. The move of port services also opens up Jamestown Wharf to new potential re-development opportunities. These are important milestones supported through the Economic Development Investment Programme (EDIP). We have continued a significant programme of road rehabilitation and resurfacing across key routes, improving safety and reliability. A huge amount of work has been done to be ready for the move of KS1 and KS2 pupils in the New Year and prepare for work at the future St Paul's KS2 site.

We are seeing some real progress with our education; our young people are our inspiration. Their resilience, honesty, and clarity about what truly matters challenge us as adults to do better. Supporting our young people to thrive remains one of this Government's strongest commitments.

With support from UK Government funding under BIOT and essential equipment funding, our Health and Social Care services have modernised and strengthened, bringing in new technology, specialist expertise and vital equipment so more people can be diagnosed, treated and cared for on-island, closer to their families. Alongside this, continued investment in prevention, social care, safeguarding and our workforce is helping ensure compassionate, safe and sustainable care for our community, now and into the future.

Thank you to all who have worked extraordinary hard and with dedication throughout this year in achieving these complex and challenging projects.

As we look to the New Year, there remains a significant gap between where we are and where we want to be. Acknowledging that honesty is not a weakness, it is the starting point for change. We will use this moment to reaffirm our commitment to work together: to communicate openly, to act fairly, and to treat one another with respect, and to take shared responsibility for the future we are building.

To those that celebrate, I wish you and your families a blessed & peaceful Christmas, and everyone happy holidays and Happy New Year for 2026 when it comes!

Bishop Dale Bowers' Christmas Message 2025

I greet you all in the blessed name of our Saviour, Jesus Christ.



Now, I know that we will all be caught up in the festivities of Christmas. In our communities of St Helena and Ascension, Christmas is always a time of holidays and travelling home to be with loved ones. For many of us, we have planned baptisms, marriages and other family events around this time so that we have most of our friends and family home to celebrate with us. One cannot deny that it will be a time of great fun, joy, happiness and family gathering. There is no question, from the amount of people travelling home for Christmas, for them, St Helena is still the best place to be.

This year I want to start my Christmas message with the words from the prophet Isaiah. 'The people who lived in darkness had seen a great light. Those who lived in a land of darkness, on them light has shined.'

These are the words of the prophet Isaiah, written seven hundred years before the birth of our Lord Jesus Christ. It's a time when the peoples of Israel and Judah were facing the threat of invasion from the Assyrian empire, causing great despair, trials, uncertainty and instability. These words, are words of great hope because he is revealing to them that God will intervene. You who live under this darkness of oppression, a great light will shine and conquer it. And that great light is the promise of a Prince of Peace, a King who will establish his eternal kingdom and will conquer the power of darkness. God lives up to his promise when the Son of God, Jesus came into the world and his light overcame the darkness of sin, evil and death.

These words are still relevant to all of us today. Jesus is still the Prince of Peace and God among us. The most important thing in my message this year is that we experience the light of Christ and the hope that his light brings, when we accept him and are transformed by him and live by his light of love, peace, harmony, forgiveness, reconciliation, endurance and hope.

In the last year and the years ahead, we would have and will experience, joy, love, kindness, hospitality, fun, happiness and contentment, but we will also experience disappointment, rejection, sorrows, anger, cheating, abuse in some form or the other, relationships breaking down, pride dominating our hearts, broken trust, despair and grief. This year there were elections with great expectations both here and globally. In our primary schools we have changes taking place and people are facing the uncertainties of change. For others they are suffering with anxiety and depression. But never think that you are alone in all of these experiences. God gave us this gift of life; do you think that he doesn't care about how we live our lives and what we face in life? St John says in his gospel 3:17 'For God did not send his Son into the world to condemn the world, but to save the world through him. 10:10, 'I came so that you can have life and life in all its fullness'; in St

Bishop Dale Bowers' Christmas Message 2025

I greet you all in the blessed name of our Saviour, Jesus Christ.

Matthew's gospel 11:28, Jesus says 'Come to me, all you who are weary and burdened, and I will give you rest'. So of course, God cares about each and everyone of us and he cares deeply about the life we live and the situations that we face.

And God does this because as his Church, we are called to make contact with you all so that you all will come in contact with him in your every day-to-day situations. In him we learn to live life. He says that not all love is good for us, the love of greed and unhealthy desires, to love is to love as he loves, desiring the greatest good for the other person and ourselves. To have joy is not to seek unhealthy pleasure, but to experience the goodness of life especially with others. To be kind as he is kind is to express his kindness to all we meet and know, and not just our friends and family. To live his life is to have hospitality where all are welcomed into our hearts as fellow brothers and sisters of Christ. To have fun is to enjoy the gift of life in harmony with others. To be happy and content is to be thankful to God for all the blessings that we receive, even as we face the many challenges in life. In these the light of Christ shines as he changes our hearts, minds and attitudes in how we live life.

In disappointments, he helps us to learn from the experience, not to allow it to dominate our hearts and minds with sadness, but to learn and be aware of the realities of life, so that we can avoid or handle the same disappointments in the future.

In moments of rejection, relationships breaking down, broken trust, again Christ helps us in these situations, especially when relationships break down and one is struggling to move on. Living the Jesus way helps the one who feels that they are the victims of harassment, to understand and see and feel the pain of another who is suffering the rejection. This doesn't seek harm instead it helps heal the situation as they move on in life, still desiring the greatest good for each other, and not trying to harm the characters of each other.

Jesus does not want us to be the victims of rejection, he heals us when he helps us to face rejection with strength, by not allowing it to dominate our minds and hearts and to see new opportunities. If we are dominated with pride, anger, hatred, Jesus helps us as he melts the hardness of the pride in our hearts helping us not to hurt others and harming our souls by sinning in the process.

There are many of us who suffer with anxiety, depression and mental health issues, Jesus asks us all to support such people to help them see the beauty of life and to know that through us, his Church, Jesus offers the support and help and love that is needed during such times.

And grief, so many families have suffered and is experiencing the pain of grief which is the pain of love. St John 3:16 says 'For God so loved the world, that he gave his only Son, that whoever believes in him should not perish but have eternal life.' Jesus says believe in me, believe that he died for our sins so that we can have eternal life and our loved ones are resting safe in his care.

Into all of these the light of Christ shines. But you must come to Christ and let Christ love you in the good and the challenging time and to protect you from hurting others and harming yourselves. So that we enjoy the beauty of life with God and each other through endurance, hope and love.

If you receive this from Christ this Christmas then you would have received the greatest gift of all - the life of Jesus himself guiding and living in and through you and in doing so you would have experience the prophecy 'The people who lived in darkness had seen a great light. Those who lived in a land of darkness, on them light has shined.'

May you all have a blessed Christmas.

Preparing for Early 'Flu Outbreak

Public Notice - SHG

The Health and Social Care Portfolio (HSC) is issuing this notice to inform the public about a significant and early influenza ('flu) threat this December.

Increased Risk of Early Outbreak

The UK is currently experiencing a severe and unusually early 'flu season. With the high volume of visitors arriving in December from the Northern Hemisphere, St Helena is likely to be affected by the Northern Hemisphere virus. Please note:

- A new variant is circulating in the UK, which is causing high case numbers, including among children and young people.
- This new variant means that protection from previous infection or past vaccinations may be limited.
- Given the influx of visitors, we anticipate that an outbreak of 'flu on St Helena is highly likely in the near future.

Vaccine Supply Update

HSC has been working to secure a supply of the Northern Hemisphere 'flu vaccine since October.

Unfortunately, we were informed last week that the vaccine will not be available until February 2026.

While the HSC would ideally vaccinate vulnerable people, this delay means the vaccine would arrive too late for the expected December/January outbreak. We want to be clear that the vaccine, even if available, offers only partial protection against the new variant, though it is still advised in the UK for certain groups.

Symptoms and Treatment

'Flu symptoms can vary widely. Whilst some people will only have minor symptoms (runny nose, sore throat, headache), others may experience:

- High fever
- Severe muscle aches
- Fatigue/Tiredness
- Shortness of breath

A small number of people, particularly the elderly or those with chronic lung conditions, may require hospital admission.

Treatment: There are no effective antiviral treatments for the general public. For most people, treatment involves:

- Resting
- Taking Paracetamol or Ibuprofen to relieve aches, sore throat, and fever.

Protect Yourself and Others: Essential Infection Control

The 'flu virus spreads in the same way as COVID-19: through coughs, sneezes (airborne), and by touching contaminated surfaces. We must apply the basic infection control measures we all learned during the pandemic:

Situation	Action to Take
If you are unwell and coughing/sneezing	STAY HOME and avoid contact with others, especially the elderly and vulnerable.
If you must go out while unwell	WEAR A MASK to significantly prevent the spread of droplets.
General Prevention	Regular and thorough hand washing or sanitising.
When coughing or sneezing (if no mask)	Cover your mouth and nose with a tissue or your elbow.

The HSC will be actively monitoring the 'flu situation and will provide regular updates. Your cooperation with these measures is vital to protect our community.

OFFICE HOURS FOR THE FESTIVE SEASON

Connect Saint Helena Ltd offices will close for the holidays from 2pm on the 23 December 2025 through to 01 January 2026. Normal business will resume on the 02 January 2026.

During this period faults can be reported as follows:

Electricity: Power Station on 22602.

Water and Sewage: Out of Hours Contractor, David Constantine on 22522 or 61307.

Connect Saint Helena Ltd wishes you all the best for the festive season.



J. PATSY FLAGG M.B.E. J.P
CONVEYS HER WARMEST
BEST WISHES TO ALL HER
BELOVED FAMILY, FRIENDS
& ACQUAINTANCES ON
ST HELENA & OVERSEAS
- FOR A HAPPY &
HEALTHY FESTIVE SEASON
AND A PEACEFUL AND
PROSPEROUS 2026.

MAY GOD BLESS US ALL



Diocese of St Helena

The Parish of St Paul's

Sunday 21st December 2025 – 4th Sunday in Advent

8.00 a.m.	Eucharist	Cathedral
9.30 a.m.	Eucharist/Church Parade	Cathedral
3.30 p.m.	Eucharist	St Peter
7.00 p.m.	Ecumenical Service	Court House Steps

Wednesday 24th December

6.00 p.m.	Eucharist	St Martin
11.30 p.m.	Midnight Mass	Cathedral

Thursday 25th December

07.45 a.m.	Eucharist	St Andrew
08.00 a.m.	Eucharist	St Peter
09.30 a.m.	Eucharist	St Helena & The Cross

The Parish of St James

Sunday 21st December 2025 – 4th Sunday in Advent

9.30 a.m.	Eucharist	St James
7.00 p.m.	Ecumenical Service	Court House Steps

Wednesday 24th December

11.30 p.m.	Midnight Mass	St James
------------	---------------	----------

Thursday 25th December

08.00 a.m.	Eucharist	St John
------------	-----------	---------

The Parish of St Matthew

Sunday 21st December 2025 – 4th Sunday in Advent

11.15 a.m.	Eucharist	St Mark
7.00 p.m.	Ecumenical Service	Court House Steps

Wednesday 24th December

11.30 p.m.	Midnight Mass	St Mark
------------	---------------	---------

Thursday 25th December

9.30 a.m.	Eucharist	St Matthew
-----------	-----------	------------

Diocese of St Helena

The Parish of St Paul's

Sunday 28th December 2025 – 1st Sunday after Christmas

9.30 a.m.	Eucharist	Cathedral
5.00 p.m.	Nine Lessons and Carols	Cathedral

Sunday 4th January 2026 – 2nd Sunday after Christmas

8.00 a.m.	Eucharist	Cathedral
8.00 a.m.	Eucharist	St Peter
9.30 a.m.	Eucharist	Cathedral

The Parish of St James

Sunday 28th December 2025 – 1st Sunday after Christmas

9.30 a.m.	Eucharist	St James
5.00 p.m.	Nine Lessons and Carols	St James

Sunday 4th January 2026 – 2nd Sunday after Christmas

09.30 a.m.	Eucharist	St James
3.30 p.m.	Eucharist	St Michael

Monday 5th January 2026

7.00 p.m.	Eucharist	St Mary
-----------	-----------	---------

Thursday 8th January 2026

7.00 p.m.	Mass with Healing	St John
-----------	-------------------	---------

The Parish of St Matthew

Sunday 28th December 2025 – 1st Sunday after Christmas

9.30 a.m.	Eucharist	St Mark
3.00 p.m.	Nine Lessons and Carols	St Mark

Sunday 4th January 2026 – 2nd Sunday after Christmas

11.15 a.m.	Eucharist	St Mark
------------	-----------	---------

Tuesday 6th January 2026

7.00 p.m.	Forgiveness 70x7	St Mark
-----------	------------------	---------

12

SCAMS OF CHRISTMAS

'TIS THE SEASON TO BE CAREFUL ONLINE

AVOID THE SCAMS

- ✔ DO YOUR RESEARCH
- ✔ VERIFY BEFORE YOU BUY
- ✔ AVOID FREE WI-FI
- ✔ ONLY BUY FROM TRUSTED/REPUTABLE SITES/STORES
- ✔ INSTALL ANTI-VIRUS SOFTWARE & KEEP IT UP-TO-DATE
- ✔ BE WARY OF UNUSUAL/UNEXPECTED REQUESTS FOR MONEY

IF YOU'VE BEEN SCAMMED...

- 1. SECURE YOUR ACCOUNTS:**
Change passwords, enable 2FA and log out of any active sessions
- 2. SECURE YOUR DEVICES:**
Clear your history & caches, ensure your OS & apps are updated, and run a malware scan.
- 3. REPORT IT:**
Contact your bank, or other relevant financial institution immediately & report it to the Police.

WATCH OUT FOR THESE SCAMS THIS FESTIVE SEASON!

1. FAKE ONLINE STORES

Scammers create professional-looking websites offering unbelievable discounts on popular gifts, such as gaming consoles, designer items, digital devices etc. You check out, the money leaves your account instantly, but your item never arrives.

2. SOCIAL MEDIA GIVEAWAYS

"Share this post & tag 3 friends to win \$5,000!" or "Free iPhone 16 for the first 100 people who click here!". These too-good-to-be-true contests often lead to stolen personal information or malware infection. If it's too good to be true it usually is!

3. FAKE CHARITY SCAMS

Scammers create fake charities or mimic real ones to take advantage of year-end giving. They use emotional pleas, urgent requests, or look-alike websites (e.g. "RedCr0ss.org" instead of "RedCross.org").

4. GRANDPARENT SCAMS

Targeting seniors, criminals will start a phone call with "Grandma/Grandpa? Do you know who this is?" Thinking it's one of their grandchildren, the victim will answer and the scammer will respond by saying they're in some sort of trouble and ask for money.

5. FAKE DELIVERY ALERTS

DHL, the Post Office etc. can't deliver your package, unless you click a link or provide personal information. The link often installs malware or takes you to a fake website.

6. FAKE ORDER CONFIRMATIONS

You receive an email saying: "Your Amazon order for £487.99 has been confirmed". The email includes a link to "view details" or "cancel order." But you know you didn't order anything. It's all a ploy to steal your hard earned cash.

7. FREE WI-FI SCAMS

Avoid the temptation to connect to free Wi-Fi while out holiday shopping, if you do, never enter personal/financial information, as the connection could be run by a scammer or hacker who can then steal this information.

8. HOLIDAY TRAVEL SCAMS

The festive season is one of the busiest travel periods. Trips can get expensive as people try to get good flight tickets, hotel rooms, and rental cars. Scammers exploit this with travel booking scams, and fake travel websites with unbelievable prices.

9. CARD SKIMMING

Card skimming happens when a scammer installs a card-reader device on an ATM or other point-of-sale terminal to steal card numbers and PINs. This scam is quite old, but it still happens often.

10. GIFT CARD SCAMS

If someone demands payment in gift cards, you're not dealing with a legitimate company but a scammer instead. They can pose as retailers, utility companies, your boss, a relative, or even a charity, usually with a request that needs urgent attention.

11. ROMANCE SCAMS

Scammers take advantage of those looking for love, often via dating apps and social media. After an online romantic relationship is established they start asking for money.

12. TECH SUPPORT SCAMS

A pop-up or email tells you that your device has a virus. You're told to call a "support line" immediately. Once connected, scammers take remote access of your device and request payment to "fix" the problem they invented.



St Helena
Government

CYBER SECURITY AWARENESS CAMPAIGN 2025





Join the Annual Wirebird Census January 2026

Volunteers Needed!

We invite enthusiastic volunteers to participate in our annual Wirebird census. This important activity involves counting of Wirebirds across designated census sites, including key conservation areas. This data collected helps us monitor the population of this species and evaluate the effectiveness of our ongoing conservation efforts. No prior experience is necessary, full training will be provided on the day.

When: January 2026

Where: Surveys will be conducted at 35 sites across various terrains and weather conditions. Locations and dates to be announced soon.

What to bring: Sensible footwear is essential due to the diverse landscapes. Please come prepared for all weather conditions.

Why volunteer?

- Enjoy unique encounters with St Helena's iconic endemic land bird.
- Contribute directly to the conservation of the Wirebird and play a role in protecting our natural heritage.
- Experience breath-taking landscapes while exploring our beautiful island.
- Connect with our dedicated and welcoming team
- Space is limited, so if you're interested in joining our team for this rewarding project, please contact us soon!

For more information: Please contact: 22569/22190 or email gavin.ellick@trust.org.sh

We look forward to hearing from you and sharing this conservation journey together.



SHG SERVICES OPENING AND CLOSING
TIMES-CHRISTMAS/NEW YEAR 2025/26

All SHG Portfolios/services will be closed on 25 and 26 December 2025 and 1 January 2026. Details of opening hours between 23 and 31 December 2025 are shown below. Normal business will resume on 2 January 2026 unless otherwise stated.

SHG Directorate	Service	Details
Central Support Service	Castle Reception	Open from 08.30 - 12.00 on 24, 29, 30 and 31 December.
	The Archives	Closed from 12.30 on the 24 December until 2 January
	Judicial Services	Closed from 12.30 on the 23 December until 2 January
Treasury	Post and Customer Services Centre	Open from 08.45 – 12.00 on 24, 29 and 31 December.
	Social Security Office	Closed from 12.00 24 December to 2 January
	Income Tax Office	Closed from 16.00 on 23 December to 2 January
Economic Development	Property – Crown Estates	Closed from 16.00 on 23 December to 5 January
	Property - Housing	Closed from 12.00 on 24 December until 2 January During this time on call services will be provided for emergency repairs only that are the Landlord's responsibility (as specified in Government Landlord Responsibilities) Contact details: Plumber 62235 Electrician 62236
	Civil Aviation and Shipping	Closed from 23 December to 5 January
	Trade and Investment	Closed from 19 December to 5 January
	Tourist Office	Monday 22 and Tuesday 23 December 08.30-16.00 Wednesday 24 December – 08.30-12.30 Saturday 27 December 11.30-14.30 (Airport) Sunday 28 December 09.00-12.00 (Office) Mon/Tues/Wed 29/30/31 December - 08.30-12.30
Education, Skills and Employment	St Helena Research Institute, Careers Access St Helena	Closed from 22 December and re-open on 5 January. Enquiries during the festive period can be made to Mrs. Sarah Iguna Mobile 64324
	St Helena Community College	Closed from 22 December and re-open on 5 January. Enquiries during the festive period can be made to Miss Carley Peters Mobile 61177
	Administration	Closed from Friday 20 December and re-open on 2 January. For the period 29 – 31 December inquiries can be made to Miss Carley Peters Mobile 61177
	Public Library	Closed from 17.00 on Tuesday 23 December and will re-open on Monday 5 January
	All Schools	All schools will close for the Christmas holidays from Monday, 16 December, and re-open as follows: Secondary School – First Teaching Day – 7 January Primary School – First Teaching Day – 14 January
Environment, Natural Resources and Planning	Planning Office, Essex House & Scotland Offices	Closed from 16.00 on 23 December. Normal opening hours will resume on Friday, 2 January
	Veterinary & Forestry Service	Agricultural Services – Veterinary Emergency calls – 26162 Agricultural Services – Forestry calls - 65394 or 24202
	Waste Management	Domestic & Commercial Waste Collection and Disposal: All domestic and commercial waste collection and disposal services throughout December to 2 January will remain unchanged. For Waste Management Issues: please contact Shane Williams – Waste Management Services Supervisor – Mobile 66380 (mornings only)
	Marine, Fisheries & Conservation	Closed from 16.00 on Friday, 19 December to Friday 2 January. Normal opening hours Monday 5 January
	Marine Compliance & Enforcement	Closed from 13.00 on Wednesday 24 December and will open on Saturday 27 December. Any enquiries outside of opening hours please call 64642. Normal opening hours will resume on 2 January
Health and Social Care	Administration and Environmental Health Services	24, 29, 30 and 31 December – Closed

		[Note: Staff on call and contactable via the Hospital Switchboard on telephone number: 22500]
	Mental Health, Physiotherapy & Occupational Therapy Services	24, 29, 30 and 31 December – Normal Working Hours
	Dental Clinic	24, 30 and 31 December – Closed 29 December – Open from 08:30 to 12:00 only. [Note: Persons experiencing dental pain when the Dental Clinic is closed, are asked to attend the Emergency Department at the General Hospital, where they will be triaged]
	Pharmacy & Lab Services	24, 29, 30 and 31 December - Normal Working Hours
	Doctor's clinics	24, 29, 30 and 31 December - Normal Working Hours
	Community Nursing Service	24, 29, 30 and 31 December - Jamestown Outpatient Clinic - Normal Working Hours 29 December - Half Tree Hollow Clinic – Open from 09.00 to 11.00 only [Note: Essential Community Nursing services, which include Home Visits and Palliative Care will be conducted throughout the festive period, as required]
	Probation, Children and Adults Social Care Services	24, 29, 30 and 31 December - Normal Working Hours
Safety, Security and Home Affairs	Port Control	Closed from 12.00 on 24, 29, 30 & 31 December. Normal working hours resume on 2 January. Contact outside normal working hours: On-call phone 61827. Emergencies: 999 or VHF 16
	Roads/ Building Maintenance/Rock Guards	Normal 24hr roster call-out system in place from 22 December to 2 January
	Sea Rescue	Open 08.00 to 12.00 on the 29, 30 and 31 December. For an emergency response, please contact the JESCC on 999 or Saint Helena Radio on VHF channel 16
	Emergency Planning	The Emergency Planning Department will be on call throughout the holiday period and will operate as normal for emergency response through the JESCC on telephone 999 and 22626 for non-emergencies. Normal opening hours will resume on the 5 January
	Customs and Immigration Office	Thursday 18 and Friday 19 December- 09.00 – 17.00 Saturday 20 December – 09.00 – 13.00 Monday 22 and Tuesday 23 December – 09.00 – 17.00 Wednesday 24 December – 09.00 – 13.00 Wednesday 31 December – 09.00 – 13.00 Friday 2 January - CLOSED Monday 5 January - normal working hours
	HM Prison	HM Prison remains open and operational over the festive and New Year period, however, there will be no social visits on the 25 and 26 December or 1 January
	Royal St Helena Police	Normal policing and emergency responses maintained throughout the holiday period. For any emergencies call telephone number 999, for non-emergencies call 22626
	Fire Service	The station will close on 29, 30 & 31 December. Normal opening hours will resume on 2 January The Fire Service will be on call throughout the holiday period and will operate as normal for emergency response through the JESCC on telephone 999 and 22626 for non-emergencies

We hope you enjoy the holidays and we wish you all the best for the festive season.

Ian Todd
Chief Secretary
St Helena Government

10 December 2025

INVITATION TO TENDER

PRIMARY SCHOOL RE-ORGANISATION PROJECT

Reference: CS-1997-SHG

St Helena Government would like to invite suitably qualified contractors to submit a Tender for the main works for the rehabilitation of the infrastructure at Harford School.

Full documentation and the specifications can be found on the SHG e-procurement system which can be accessed via: <https://intendhost.co.uk/sainthelena/asp/Home> following registration on the system. User guides are available via the 'Supplier Information' tab to assist prospective contractors registering on the e-procurement system.

If contractors would like a hard copy of the tender documentation, they should contact the Project Manager, Lesa Davidson, on tel no: 22270 or email : Julian.benjamin@sainthelena.gov.sh.

Tender submissions should be made via the e-procurement system, and the tender deadline has been extended to 12:00 on Friday 9 January 2025.

Contractors should note that this tender is not being advertised overseas.

NOTE TO EDITOR:

This project has been approved for funding under the UK funded Economic Development Investment Programme (EDIP), in partnership with the FCDO.

SHG

10 December 2025

FESTIVE OPENING HOURS

DATE	TIME
Mon 22 nd Dec (later opening)	9am – 5pm
Wed 24 th Dec	9am - 1pm
Thurs 25 th and Fri 26 th Dec	CLOSED
Sat 27 th Dec	9am - 12pm
Mon 29 th Dec	9am - 3pm
Tue 30 th Dec	9am - 12pm
Wed 31 st Dec	9am - 1pm
Fri 2 nd Jan	Normal Hours Resume

Directory Enquiries will be available during opening hours and Faults can be logged 24/7 on tele 121

Wishing all our customers a wonderful Christmas and a successful year ahead!



EXPRESSION OF INTEREST

Member of the Labour Regulatory Authority

Expressions of Interest are sought from members of the Employee Representative Committee and the Private Sector to join the Labour Regulating Authority (LRA). The LRA plays an important part in protecting the rights of employees by:

- advising the Governor in Council and any relevant Council Committee on labour protection issues;
- investigating and determining claims made by employees under the Employment Rights Ordinance 2010; and
- preparing and publishing guidelines on best practice and codes of practice in employment protection for employers, employees and workers.

The LRA consists of the Chief Magistrate and two other members who should ideally come from a private sector employer and a member of an organisation that promotes the rights of employees. The LRA meets mainly to consider claims by employees for compensation for unfair dismissal and to issue codes of practice to employers and employees.

The remuneration for this position is £600 per annum, paid quarterly in arrears. In addition, a mileage allowance of 77p per mile will also be paid when using personal vehicles to travel to meetings or when carrying out any other duties on behalf of the LRA.

If you are interested in taking up this important position and would like to have further information please contact Yvonne Williams, Secretary, Labour Regulatory Authority at yvonne.williams@judicialservices.sh or Tel No: 22340

The relevant form to register an interest may be obtained from Linda Benjamin, Information & Research Support Officer, at the Castle on Tel No: 22470, via email: linda.benjamin@sainthelena.gov.sh or on the SHG website at <https://www.sainthelena.gov.sh/documents/eoi-form-member-labour-regulatory-authority/>.

Completed forms should be returned to the Secretary of the LRA by Friday, 9 January 2026.

VACANCY



Insurance Manager

Commencing at £17,004 per annum

Bank of St Helena Limited is seeking to recruit a suitable person to fill the new and exciting position of an Insurance Manager.

Reporting to the Deputy Managing Director, the Insurance Manager will monitor and be responsible for the management of Insurance Policy sales, Underwriting and Claims.

The role includes:

- Overseeing the Insurance team and provide customer support on a daily basis.
- Ensure the section is operational, efficient and compliance at all times.
- Deliver first-class service to customers, whilst adhering to processes and procedures.

Working closely with the Deputy Managing Director and in collaboration with Caribbean Alliance, the successful candidate will also:

- Develop and implement risk management strategies.
- Oversee the life cycle of Insurance Policies, monitor sales, manage underwriting and Claims .
- Train and manage the Insurance team.
- Ensure adherence to Regulations in collaboration with Caribbean Alliance.

About You

The ideal candidate must be:

- Highly motivated, self-reliant, and able to work to their own initiative.
- Flexible and adaptable to meet work demands.
- Accurate and detail-orientated, with both a practical and strategic approach to tasks.
- A strong communicator with excellent interpersonal and influencing skills.

Essential Requirements

- A background in financial and/or business management.
- Proven organisational skills with the ability to build effective working relationships at all levels.
- Must have good interpersonal skills and deal with people in a professional manner, with strong sales and negotiation skills.
- Some knowledge of the delivery of insurance products is desirable.

Training and Development

- Training for the position will be provided, which will include international training resources.
- Candidates will be expected to study towards a relevant professional qualification if one is not already held.

An Application form and a job profile is available upon request from the Bank.

Completed application forms should be addressed to the Human Resources Manager, Market Street, Jamestown or emailed to hrmanager@sainthelenabank.com.



Bank of St. Helena Ltd.

Established and regulated in St Helena under the Financial Services Ordinance, 2008 and 2017, the Financial Services Regulations, 2017, the Company Ordinance, 2004 and the Company Regulations, 2004



info@sainthelenabank.com



www.sainthelenabank.com



[@sainthelenabank](https://www.facebook.com/sainthelenabank)



+290 22390



Market Street, Jamestown



Bank of St Helena Ltd



**THE STAFF OF THE
QUEEN MARY STORE,
VICTORIA SHOP &
BARRACK'S STORE
WISH ALL OUR
CUSTOMERS A MERRY
CHRISTMAS & A
HAPPY NEW YEAR!**

**WE BE CLOSED FROM 25TH
DECEMBER, OPEN ON THE
MONDAY 29TH UNTIL 3.00PM
CLOSED FROM 30TH DECEMBER
OPENING AGAIN ON FRIDAY
2ND JANUARY 2026**

NOTIFICATION

MEETING OF THE LAND DEVELOPMENT CONTROL AUTHORITY

"The Land Development Control Authority will hold its monthly meeting on **Thursday, 15th January 2026, at 10 am in the Training Room 1 opposite the St Helena Community College Main Hall, Jamestown.**

Meetings of the Authority are open to members of the public, applicants and objectors.

The Agenda and redacted version of the Handling Reports will be available on the LDCA Web Page of the SHG Web Site. Should you require assistance, please contact the Secretary of the Land Development Control Authority on telephone number 24724.

Applicants and objectors may speak at the meeting providing that a summary of the points to be raised has been submitted to the Secretary at least 24 hours before the meeting".



Seeking Part Time Waitress

The Blue Lantern is seeking an enthusiastic and dedicated **Part-Time Waitress** to join our front-of-house team!

We pride ourselves on providing exceptional service and a warm, inviting atmosphere. If you love working with people and thrive in a busy environment, we want to hear from you!

Key Qualities & Attributes we are looking for:

- Exceptional Customer Service
- Positive and Professional Demeanour
- Good Communication Skills
- Team Player
- Reliable & Punctual

If you wish to apply please get in contact via telephone on **25555/66498** email bluelantern@helanta.co.sh or pop by the Blue Lantern we are open till 1PM Monday - Friday.

St Helena welcomes World Arc Rally 2026



St Helena Island
A breath of fresh air

Calling all local service providers...

St Helena will once again welcome the fleet of the World Arc Rally between 26 - 30 January 2026.

This is a great opportunity for you to showcase your offering.

If you provide Island tours, guided walks, restaurant, take-away or catering services, launderette services, taxi service, car hire, entertainment etc...we would like to hear from you.

Please contact the St Helena Tourist Office by Tuesday 30th December, for an opportunity to promote your services and opening hours to the fleet ahead of their visit.

Email: Sophia.Joshua@sainthelena.gov.sh
Tel: 22158



sthelenatourism.com

WE NEED YOU!



We are creating a **logo** for our **Marine Protected Area** and we want **your ideas!**

What would **you** like the **logo** to look like?
What would **you** like to see **included?**

Let us know, whether it be a few words, a sketch or a drawing.
Email laura.duncan@sainthelena.gov.sh to share your thoughts and ideas

Closes: 11th January 2026



THE MARINE AND FISHERIES CONSERVATION SECTION QUARTERLY CATCH

OCTOBER TO DECEMBER 2025 www.sainthelena.gov.sh



The Marine and Fisheries Conservation Section (MFCS) team, in line with the vision of the Marine Management Plan 2023-27, aim to conserve, protect and restore the rich biodiversity and unique natural ecosystems of St Helena's Marine Protected Area (MPA) with use of its natural resources managed in accordance with its International Union for Conservation of Nature (IUCN) Category 6 sustainable use principles now and for future generations.

It's been a busy past three months, MFCS have been very active in our scientific work and monitoring, with lots of progress and highlights:

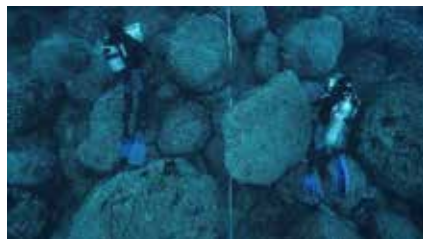
**Zooplankton Surveys Reach
Midpoint**



We have reached the midpoint of our zooplankton surveys, focusing on fish eggs and larvae, with fieldwork progressing well and remaining firmly on track. To date, an impressive 269 samples have been collected with 83 being collected over the past three months! This achievement provides an exceptional

foundation for the next phase of analysis and reflects the team's consistent effort in the field. During fieldwork, the team also discovered what appears to be an oarfish tail. The oarfish is an extremely long ribbon like fish, the longest bony fish in the world, known for its silvery scaleless body and red crest of dorsal fins. This rare and intriguing find contributes to our growing understanding of the lesser-known species that may be present in St Helena's surrounding waters. This unexpected discovery further highlights the island's unique marine biodiversity and reinforces the value of continued research in the area.

UVCS: October Survey Complete



In October, the team successfully completed the winter round of UVCS for this year. These surveys observe and quantify fish, invertebrate, and plant communities, providing valuable insight into marine life abundance and trends across St Helena's waters. This work builds on a long term UVC programme that was first established in 2002 and has been conducted regularly since 2013. The data gathered helps to inform conservation planning, support fisheries management, and provides a reliable baseline for identifying long term changes in St Helena's marine ecosystems. To deliver this monitoring, surveys are carried out across 22 permanent paths located at 12 sites around the

island, including Flagstaff Bay, Buttermilk Point, Banks, Rupert's Bay, James Bay, Bennetts Point, Billy May Revenge, Lemon Valley and Egg Island.

Long Term Oceanographic Monitoring



Since 2015, temperature data has been collected around St Helena as part of a long-term marine monitoring programme designed to track environmental change over time. This programme uses a range of environmental data loggers, including HOBO temperature loggers and MiniDOT oxygen loggers, which we service and replace every six months to ensure consistent and reliable data.

HOBO temperature loggers are the most widely deployed and are often the easiest to see in the water. At sites such as the wreck of the Papanui in James Bay, they are attached to a length of rope marked by a yellow buoy, with the logger secured below, where it continuously records seawater temperature. MiniDOT loggers are deployed at fewer locations but provide additional insight into water quality. These compact devices measure both water temperature and the amount of oxygen dissolved in the water, an important indicator of ocean health. The data is stored internally and later downloaded for analysis.

Together, these monitoring tools provide a comprehensive picture of



THE MARINE AND FISHERIES CONSERVATION SECTION QUARTERLY CATCH

OCTOBER TO DECEMBER 2025 www.sainthelena.gov.sh

how St Helena's marine environment is changing over time. The information gathered supports scientific research and helps guide future marine management and climate change resilience planning for the island.

Lobster Tagging Programme 2025/26



We have started our lobster tagging programme for the 2025/26 season, focusing on the two commercial species, the brown spiny lobster *Panulirus echinatus*, locally known as crayfish, and the endemic red slipper lobster *Scyllarides obtusus*, locally known as stump. This programme supports sustainable fisheries management by monitoring key aspects of the lobster population, including growth rates, abundance, breeding cycles, and movement patterns.

Tagging work started in November of this year, in line with the start of the lobsters' breeding season and will continue every other month until March 2026. Each work period includes three nights of diving and three days of potting. Night dives are carried out as lobsters are more active after dark, while daytime potting uses circular baited traps deployed in different locations around the island for a 24-hour period to safely capture lobsters without causing harm. Captured individuals are tagged with conventional identification tags, visible as small green markers.

Grouper Tagging Programme Continues



MFCS has been carrying out our grouper tagging programme, which began in 2018. This long-term monitoring tracks fish abundance, growth rates, breeding cycles, and movement, providing vital information to support sustainable fisheries management. Fieldwork is conducted one day each month. During surveys, fish are captured, measured, and tagged with conventional yellow tags before being released back into the ocean. Approximately 8% of the fish are double tagged, allowing researchers to account for tag loss. If a single tag is lost, data could be incomplete, but with two tags, the team can accurately estimate the proportion of tags lost and refine population assessments.

Some fish experience barotrauma, a condition caused by rapid changes in pressure during capture. This can result in internal injuries, such as the expansion of the swim bladder or displacement of organs. To reduce the effects of barotrauma, fish are carefully returned to depth using a specialized cage. This approach has shown excellent survival rates, with many individuals returning for subsequent recaptures. These repeated encounters provide valuable insights into fish movements, survival, and population dynamics, highlighting both the resilience of the species and the effectiveness of the methods used.

Oceanographic Buoy Discovery at Egg Island



At Egg Island, an unidentified buoy was recently discovered by Mr Gavin Maggott, who brought it to the Marine Centre. Part of the buoy had broken away, making it unclear what the device was or who had deployed it. Following further research by MFCS, the buoy was identified as an oceanographic monitoring tool known as an SVP, Surface Velocity Program, drifter. This sturdy buoy is designed to float with the currents near the surface, tracking water movement and recording key information such as sea temperature. Equipped with multiple sensors at different depths, it provides a detailed picture of conditions in the open ocean. The buoy was designed by a company called Pacific Gyre, which develops innovative tools to help scientists and organizations study and better understand the world's oceans. Devices like this drifter are vital for monitoring currents, temperatures, and other ocean conditions, providing researchers with valuable insights into global marine environments.

Year 9 Students Visit the Marine Centre



THE MARINE AND FISHERIES CONSERVATION SECTION QUARTERLY CATCH

OCTOBER TO DECEMBER 2025

www.sainthelena.gov.sh



An exciting day was recently held at the Marine Centre, as we welcomed a group of Year 9 students eager to learn more about careers in marine conservation. The visit included a full tour of the centre, followed by a presentation featuring insights from our Marine and Fisheries Conservation Officer, Adam Riggs, and our Graduate Management Trainee, Shelby Bargo, who shared details of their roles and day to day work.

The students also observed a practical demonstration of an otolith extraction from a tuna head. Otoliths are small structures in a fish's inner ear, which help fish maintain balance and sense movement in the water. For scientists, otoliths act like natural records of a fish's life. By examining the rings on an otolith, like counting tree rings, researchers can determine a fish's age, growth rate, and the environments it has lived in. It was inspiring to see this group of young people showing curiosity and enthusiasm for marine science and conservation. We look forward to seeing these bright minds potentially contributing to the field in the future.

Year 8 Career Talk at St Helena Secondary School



During this quarter, our Graduate Management Trainee, Shelby Bargo, also visited St Helena Secondary School to deliver a career talk to Year 8 students who are beginning to consider their future options. During the session, Shelby provided an overview of her role within MFCs, introduced the wider team, and explained the variety of work each member undertakes. She also shared practical advice on relevant subjects to study and highlighted ways students can get involved in marine conservation at an early stage, including volunteering opportunities and alternative pathways beyond traditional degree routes. The students were engaged and able to identify different fish species. They also discussed the scientific monitoring methods used by MFCs. It was encouraging to see their interest in marine science and conservation.

Strengthening St Helena's Marine Protection

In just five years, St Helena has progressed from having no dedicated marine enforcement capacity to establishing a fully trained, locally led Marine Enforcement Section, with support from the Blue Belt Programme. This represents a significant milestone in safeguarding the island's waters, strengthening compliance, and supporting long-term marine stewardship. This achievement reflects the

commitment and collaboration of all those involved and marks an important step forward in protecting St Helena's marine environment for



future generations.

Knowledge Exchange Strengthens Marine Research Across UK Overseas Territories

In November, our Marine and Fisheries Conservation Officer, Adam Riggs, travelled to Ascension Island to collaborate with the Ascension Marine team, alongside Dr Kerry Howell and Amelia Bridges from Plymouth Marine Laboratory and the University of Plymouth, and Dr Tim Noyes from the Bermuda Institute of Ocean Sciences.

Over the course of ten days, the group took part in a valuable knowledge exchange focused on the Darwin PLUS project, *Building baseline knowledge of mesophotic ecosystems in the Ascension Island Marine Protected Area*. The visit facilitated productive discussions, allowing teams to share expertise, gain insight into ongoing work, and explore how this emerging technology could be applied to address key research questions across our respective territories. This innovative project uses a newly designed, low-cost, compact camera system to survey habitats and



THE MARINE AND FISHERIES CONSERVATION SECTION QUARTERLY CATCH

OCTOBER TO DECEMBER 2025 www.sainthelena.gov.sh

species at depths between 30 and 200M.

MC&ES Welcomes Marine Management Organisation (MMO) Representatives



MC&ES recently welcomed a representative, Sam Gregory, from MMO as part of a formal visit focused on officer development and a review of current procedures. During the visit, inspection procedures were formally reviewed and updated, alongside strategies relating to compliance and enforcement. These developments strengthen our ability to deliver effective marine protection and highlight the dedication and professionalism of both enforcement officers and support staff. As part of this work, another representative, Paul Nelson, provided technical assistance to the Marine Enforcement team, supporting the installation and data analysis of Remote Electronic Monitoring (REM) systems. REM is a technology installed on fishing vessels that uses onboard cameras and sensors to remotely monitor fishing activity, including effort and catch, helping to improve compliance and strengthen fisheries oversight.

This visit reflects our ongoing commitment to transparency, accountability, and the continuous improvement of operational standards, as well as upholding the highest standards of marine

stewardship and regulatory compliance, ensuring the long-term protection of St Helena's marine environment.

Mission Atlantic Workshop Highlights Research Across the Mid-Atlantic Region



A Mission Atlantic workshop was recently held, bringing together researchers to share outputs and findings from a range of studies focused on the marine environment of St Helena and the wider Mid-Atlantic region. The workshop covered research conducted across key areas, including seamounts along the Mid-Atlantic Ridge, St Peter and St Paul's Rocks, St Helena, and Ascension Island. Discussions focused on climate change scenarios, human impacts, environmental drivers, and the species that rely on these important marine habitats. By bringing together research from across the region, the workshop provided valuable insights into how these ecosystems are connected and how they may respond to future environmental change.

MMP 2nd Annual Report Marks Another Year of Progress for St Helena's MPA

We are pleased to announce the publication of our second MMP Annual Report, marking another important milestone in our ongoing commitment to protecting and enhancing St Helena's MPA. The



report highlights the strong progress made over the past year and reflects the continued dedication of all those involved in caring for the island's marine environment. The 2024 to 2025 highlights showcase a year of growth, collaboration, and meaningful impact. A key moment was the release of the film *A Small Island with a Big Future: St Helena's Marine Protected Area during MPA Day* in August 2024, celebrating the island's rich marine heritage. Research activity also remained strong, with scientific publications contributing to a better understanding of local marine life, including input from the Marine and Fisheries Conservation Section to the IUCN's global review of sharks, rays, and chimaeras. During Marine Awareness Week in March 2025, the team shared findings from four years of climate change research on St Helena's priority marine species, providing valuable insight into how these species may respond to future environmental change. Further celebrating the island's unique biodiversity, a special stamp issue released in September 2024 featured deep-sea species discovered during a



THE MARINE AND FISHERIES CONSERVATION SECTION QUARTERLY CATCH

OCTOBER TO DECEMBER 2025 www.sainthelena.gov.sh

2022 research cruise. The publication of this second MMP Annual Report reflects the commitment of our teams, partners, and wider community, and reinforces our shared responsibility to safeguard St Helena's marine environment for generations to come.

St Helena Wins ICCAT Tag Return Lottery



Each year, International Commission for the Conservation of Atlantic Tunas (ICCAT) runs a draw using all tag returns from its international tagging programme. ICCAT is an intergovernmental organisation responsible for the conservation and management of tuna and other highly migratory fish species across the Atlantic Ocean. One tag number is drawn at random, and the person or organisation that returned that tag receives a monetary prize. St Helena was fortunate to be a winner this year. This marks the third time that St Helena has won, reflecting a strong rate of tag returns and the effective management of the island's tagging programme. The results highlight the success of ongoing research efforts and the value of consistent monitoring in supporting sustainable fisheries management.



Interesting Marine Species Sightings

Day Sarpon (Longnose lancetfish *Alepisaurus ferox*)

A Longnose lancetfish, locally called Day Sarpon, was recently sighted in James Bay. These iridescent fish can appear bluish or pale, with fins ranging from brown to black, and can reach a maximum length of around 2 meters. Sarpon are rarely caught around St Helena, mostly appearing on longlines used for tuna fishing, though occasional captures on handlines have been reported. These fish are widespread in tropical and subtropical waters of all oceans, rarely entering coastal waters, typically inhabiting depths of several hundred meters during the day but rise closer to the surface at night when they are more active. They are long, slender, and scaleless, reflecting their adaptations to life in the deep ocean.

Robust mora *Laemonema robustum*



Another interesting fish sighting was reported by Mr Dorian "Duffy" Caswell, from an area locally known as 'The Shovel', off South West Point. He encountered a robust mora, a deep-water fish that inhabits depths

ranging from the outer continental shelf down to the abyss. Robust moras are benthopelagic, meaning they live and feed near the ocean floor but also spend time swimming in the open water just above it. The species is brownish in colour, with darker fins, and can reach a standard length of at least 36cm. Robust moras are considered rare around St Helena, with only occasional records from the eastern and central Atlantic.

Flying halfbeak *Euleporhamphus velox*



A Flying Halfbeak was recently recorded by Mr Dorian "Duffy" Caswell in local waters. This small, streamlined fish typically grows to around 15 cm in length and is easily recognised by its elongated, pointed lower jaw, which extends beyond the upper jaw to form a distinctive beak-like profile. Its body is generally silvery, marked by a faint lateral line running from head to tail that helps it blend with sunlight filtering through the water. The well-developed pectoral fins aid in propulsion, particularly when the fish breaks the surface, reflecting its adaptation to life in the upper layers of the ocean.

INVITATION TO TENDER

Management of Security Services at Rupert's Cargo Management Facility (RCMF) and Jamestown Wharf

The St Helena Government would like to invite organisations to submit a Tender for the Management of Security Services at Rupert's Cargo Management Facility (RCMF) and Jamestown Wharf. **Please note this tender is reserved for on-island suppliers only.**


The Safety, Security & Home Affairs (SSHA) Portfolio are offering a tender to a Supplier for Security Services of the RCMF, and any legacy work at Jamestown Wharf. The contract will include:

- Agreement on security services to cover the entire Port of Jamestown.
- Management of the gatehouse at Ruperts
- Deliver static security services to the Port of Jamestown
- Deliver mobile security services to the Port of Jamestown
- Deliver detection services to the Port of Jamestown and any vessels as and when required
- Deliver detection services to the His Majesty Prison (HMP) Jamestown and Royal St Helena Police Service (RSHP) as and when required
- Support Port Control with their required maintenance checks of equipment in the Port of Jamestown
- Support Port Control with operational activity including supporting the AP and lifts to improve health and safety at the Port of Jamestown
- Deliver security training to stakeholders in the Port of Jamestown as and when required.

Key Submission Dates:

Action	Deadline
EOI Submissions	Mon, 12 Jan 2026 @ 12:00
Site Visit	On/After Tue, 13 Jan (TBC)
Clarifications	Mon, 19 Jan 2026 @ 12:00
Final Bids Due	Wed, 28 Jan 2026 @ 12:00

HAIR & BEAUTY SALON



peaks 24555
shanna.john@helanta.co.sh

Chloe - Stylist/Beauty Therapist
Chloe - Stylist/Beauty Therapist
Chloe - Stylist/Beauty Therapist
Chloe - Stylist/Beauty Therapist
Chloe - Stylist/Beauty Therapist
Chloe - Stylist/Beauty Therapist
Chloe - Stylist/Beauty Therapist
Chloe - Stylist/Beauty Therapist
Chloe - Stylist/Beauty Therapist
Chloe - Stylist/Beauty Therapist

There is currently no facilities at the market for Washing or coloring, but we can do Cutting and styling for Ladies, Gents & Kids.

BOOKINGS ARE AN ADVANTAGE BUT WALK-INS AT ANYTIME ARE WELCOME

EXCITING NEWS!

Our Hair Salon is now operating on a FULL TIME BASIS at the Market

OPENING HOURS FOR DECEMBER

Day	Opening Hours
SUNDAY 14 TH	10:00am to 2pm
MONDAY 15 TH	9:30am to 5pm
TUESDAY 16 TH	CLOSED
WEDNESDAY 17 TH	CLOSED
THURSDAY 18 TH	9:30am to 5pm
FRIDAY 19 TH	9:30am to 6pm
SATURDAY 20 TH	9:30am to 6pm
SUNDAY 21 ST	10:00am to 2pm
MONDAY 22 ND	9:30am to 5pm
TUESDAY 23 RD	9:30am to 5pm
WEDNESDAY 24 TH	9:30am to 5pm
THURSDAY 25 TH	CLOSED
FRIDAY 26 TH	10:00am to 2pm
SATURDAY 27 TH	9:30am to 6pm
SUNDAY 28 TH	10:00am to 2pm
MONDAY 29 TH	9:30am to 2pm
TUESDAY 30 TH	9:30am to 2pm
WEDNESDAY 31 ST	9:30am to 5pm

Merry Christmas & Happy Holidays

WISHING ALL OF OUR CUSTOMERS WITH EVERY GOOD WISH FOR 2026!

FROM THE MANAGEMENT & STAFF OF PEAKS ENTERPRISES

PHILLIP JOHN'S SHOP, ST. PAUL'S

24555 email: shanna.john@helanta.co.sh

Opening hours

Day	Opening Hours
MONDAY 15 TH	8am to 6pm
TUESDAY 16 TH	8am to 6pm
WEDNESDAY 17 TH	8am to 6pm
THURSDAY 18 TH	8am to 6pm
FRIDAY 19 TH	8am to 6pm
SATURDAY 20 TH	8am to 6pm
SUNDAY 21 ST	10am to 5pm
MONDAY 22 ND	8am to 6pm
TUESDAY 23 RD	8am to 6pm
WEDNESDAY 24 TH	8am to 4pm
THURSDAY 25 TH	CLOSED
FRIDAY 26 TH	10am to 2pm
SATURDAY 27 TH	8am to 6pm
SUNDAY 28 TH	10am to 2pm
MONDAY 29 TH	10am to 3pm
TUESDAY 30 TH	10am to 3pm
WEDNESDAY 31 ST	10am to 5pm
THURSDAY 1 ST JAN	10am to 2pm

24555 email: shanna.john@helanta.co.sh

Opening hours

Day	Opening Hours
MONDAY 15 TH	8am to 6pm
TUESDAY 16 TH	8am to 6pm
WEDNESDAY 17 TH	8am to 6pm
THURSDAY 18 TH	8am to 6pm
FRIDAY 19 TH	8am to 6pm
SATURDAY 20 TH	8am to 6pm
SUNDAY 21 ST	10am to 5pm
MONDAY 22 ND	8am to 6pm
TUESDAY 23 RD	8am to 6pm
WEDNESDAY 24 TH	8am to 4pm
THURSDAY 25 TH	CLOSED
FRIDAY 26 TH	10am to 2pm
SATURDAY 27 TH	8am to 6pm
SUNDAY 28 TH	10am to 2pm
MONDAY 29 TH	10am to 3pm
TUESDAY 30 TH	10am to 3pm
WEDNESDAY 31 ST	10am to 5pm
THURSDAY 1 ST JAN	10am to 2pm

INVITATION TO TENDER

Installation of Playground Equipment & Facilities

St Helena Government would like to invite suitably experienced contractors to submit tenders for the following contract:

ED-1972-SHG – Installation of Playground Equipment & Facilities – Half Tree Hollow & Longwood Green

A site visit to view the works will take place on Wednesday, 17 December 2025, meeting at Longwood Green at 09:00 and at Half Tree Hollow Playground at 11:30.

Contractors should note that site visits requested after this date will not be entertained unless there is a relevant reason why the contractor could not attend the scheduled site visit.

Copies of the tender document and further details can be obtained from the Procurement Officer, on telephone no: 25932 or via email tiffany.lawrence@sainthelena.gov.sh.

Completed tenders should be placed in the Tender Box located on the Top Floor, Post Office Building by 12:00 on Wednesday, 07 January 2026, clearly marked **"Tender ED-1972-SHG"**.

Interested parties should note that this opportunity is **not** being advertised overseas.

SHG
09 December 2025

INVITATION TO TENDER

Replacement of Timber Windows at Community Care Complex

St Helena Government would like to invite suitably experienced contractors to submit tenders for the following contract:

SSHA9-2025/26 – Replace Timber Windows with Aluminium Windows at the Community Care Complex

A site visit to view the works will take place on Friday, 09 January 2026, at 10:00, meeting at the Community Care Complex, Ladder Hill.

Contractors should note that site visits requested after this date will not be entertained unless there is a relevant reason why the contractor could not attend the scheduled site visit.

Copies of the tender document and further details can be obtained from the Procurement Officer, on telephone no: 25932 or via email tiffany.lawrence@sainthelena.gov.sh.

Completed tenders should be placed in the Tender Box located on the Top Floor, Post Office Building by 12:00 on Thursday, 22 January 2026, clearly marked **"Tender SSHA9-2025/26"**.

Interested parties should note that this opportunity is **not** being advertised overseas.

SHG
04 December 2025



W.A Thorpe & Sons Ltd.

A family business since 1865

CHRISTMAS OPENING HOURS 2025

	Grocery Shop	Tinkers	Wholesale Store	Emporium
Wednesday 17 th	8 am - 5 pm	9 am - 5 pm	9 am - 12.45 pm	8 am - 5 pm
Thursday 18 th	8 am - 6 pm	9 am - 6 pm	9 am - 4.45 pm	8 am - 6 pm
Friday 19 th	8 am - 8 pm	9 am - 8 pm	9 am - 4.45 pm	8 am - 8 pm
Saturday 20 th	9 am - 8 pm	9 am - 8 pm	9 am - 12.45 pm	9 am - 8 pm
Sunday 21 st	9 am - 1 pm	Closed	Closed	Closed
Monday 22 nd	8 am - 6 pm	9 am - 6 pm	9 am - 4.45 pm	8 am - 6 pm
Tuesday 23 rd	8 am - 6 pm	9 am - 6 pm	9 am - 4.45 pm	8 am - 6 pm
Wednesday 24 th	9 am - 3 pm 7 pm - 9 pm	9 am - 3 pm 7 pm - 9 pm	9 am - 2.45 pm	9 am - 3 pm 7 pm - 9 pm
Thursday 25, Friday 26	Closed			
Saturday 27 th	9 am - 1 pm	9 am - 1 pm	9 am - 12.45 pm	9 am - 1 pm
Sunday 28 th	Closed			
Monday 29 th	9 am - 1 pm	9 am - 1 pm	9 am - 12.45 pm	9 am - 1 pm
Tuesday 30 th	Closed			
Wednesday 31 st	9 am - 1 pm	9 am - 1 pm	9 am - 12.45 pm	9 am - 1 pm
Friday 2 nd Jan 2026	Back to normal			

We wish all our customers a Very Merry Christmas and a Bright and Prosperous New Year!

Festival of Walking 2025/26



Festival of Walking offers a unique opportunity to explore St Helena's nature trails and Post Box Walks, whilst enjoying the diverse landscapes.

As part of the 2025/26 Festival, St Helena Tourism is pleased to be collaborating with iRecord St Helena, the island's National Biological Records System, which makes it easy for anyone to record and share wildlife sightings.

By submitting observations through the app, participants can contribute to a national database that supports scientists, conservationists, and the wider community in understanding and protecting St Helena's unique biodiversity, helping to connect people with nature and safeguard the island's environment for future generations.

To register your interest for Festival of Walking and receive email updates of the 'Walk of the Week' email, dianne.venning@sainthelena.gov.sh or call the Tourist Office T: 22158.



*Download on
the App Store*



*Download on
Google Play*

Date	Walk
27 Dec	Lot's Wife Ponds
04 Jan	Fairyland Flax Mill and Peak Dale
10 Jan	Gill Point
17 Jan	Blue Point
24 Jan	Prosperous Bay
31 Jan	The Barn
07 Feb	Great Stone Top
15 Feb	Lot's Wife Ponds
07 Mar	Sugarloaf - Banks - Ruperts - Jamestown
14 Mar	Flagstaff
15 Mar	Lower Jamestown history walk
21 Mar	Rosemary Plain - Casons (via Mackintosh)
28 Mar	Lemon Valley

Festival of Walking

Walk of the Week - Fairyland Flax Mill and Peak Dale



Date: Sunday, 4 January 2026

Start Time: 09:00

Meeting Point: Casons Car Park

Duration: approx 2 hours (Fairyland Flax Mill) approx 4 hours (Peak Dale)

Walk grade: Fairly Easy | 3 - 4 (Fairyland Flax Mill) Moderate | 5 - 6 (Peak Dale)

Reconnect with a chapter of St Helena's history, the flax industry, that once was the main export and source of employment for the island. Join Henry Thorpe as he talks about one of the island's most fascinating heritage stories, which leads to a viewing of the Fairyland Flax Mill.

Walkers have the option to continue along the track to enjoy the diverse landscapes as we head to the Peak Dale Post Box walk, continuing along to Thompsons Wood garage and returning to Casons car park.

Remember to wear sensible walking shoes, sunscreen and bring a minimum of 2L of water

Date	Upcoming Walks
Saturday, 10 January 2026	Gill Point

*Receive email updates of the 'Walk of the Week' email dianne.venning@sainthelena.gov.sh or the Tourist Office
T: 22158*

Festival of Walking

Walk of the Week



Date: Saturday, 27 December 2025

Start Time: 08:00

Meeting Point: Sandy Bay Community Centre, then car share to Sandy Bay Beach.

Duration: approx 5 hours



Walk grade: Fairly Strenuous | 7 - 8

Lot's Wife Ponds is a coastal walk offering stunning views with fascinating birdlife. Take a refreshing swim in the natural pools before the walk back (bring swimming gear).

The walk will be led by local walking guide, Tom Wortley from Rockmount Walking Tours. There are some narrow sections on the path and cliffside walking. Remember to wear sensible walking shoes, sunscreen and bring a minimum of 2L of water.

Please contact the Tourist Office to register for the walk and let us know if you would like to offer car share from the Sandy Bay Community Centre to Sandy Bay Beach and return.

Date	Upcoming Walks
Sunday, 4 January 2026	Fairyland Flax Mill and Peak Dale Post Box Walk

*Receive email updates of the 'Walk of the Week' email dianne.venning@sainthelena.gov.sh or the Tourist Office
T: 22158*

APPLICATIONS FOR DEVELOPMENT PERMISSION

NOTICE IS HEREBY GIVEN that an Application has been received in respect of the following proposals:

1. **Application 2025/110:** FULL Planning Application for **Installation of Car Port & Decking to Include Minor Ground Works**, Half Tree Hollow, on Parcel HTH1186 Applicant: Sasha Bargo.
2. **Application 2025/111:** FULL Planning Application for **Proposed Three Bedroom Dwelling**, Lower Cleughs Plain on Parcel NG0428. Applicant: Kyle R. Yon.

Copies of the Applications and Plans may be inspected by prior appointment with the Planning Section, Essex House, Main Street, Jamestown, Monday to Friday, from 08.30am to 4pm. Appointments can be made with the Administration Assistant on Telephone 24724 or email rea.williams@sainthelena.gov.sh stating the Application Reference Number they wish to inspect. Due to the Christmas Break, viewings in person at Essex House will be available only during week commencing Monday, 22 December 2025 until Wednesday, 24 December 2025. Please call Essex House direct on 22270 for viewings on the 24 December 2024.

Any person who wishes to make Representations on any of the above Applications should make them in writing to the Planning Office, Essex House, Main Street, Jamestown or Email planning.mailbox@sainthelena.gov.sh

Public Representation Closing Date: 4pm – 02nd January 2026

Patricia Coyle, Head of Planning & Building Control



CUSTOMER NOTICE



Transfer Box

At the Bank of St Helena, we understand that your time is valuable, especially during our busiest periods.

To help make your banking experience smoother and faster, the designated transfer box is always available for an efficient alternative for bill payments and transfers.

All transfers placed in this box will be securely collected and processed by our team at the end of the business day.

We appreciate your patience and continued support.



Bank of St. Helena Ltd.

Established and regulated in St Helena under the Financial Services Ordinance, 2008 and 2017, the Financial Services Regulations, 2017, the Company Ordinance, 2004 and the Company Regulations, 2004



info@sainthelenabank.com



www.sainthelenabank.com



[@sainthelenabank](https://www.facebook.com/sainthelenabank)



+290 22390



Market Street, Jamestown



Bank of St Helena Ltd



JOIN US! WE ARE RECRUITING...

BENEFITS

- **Leave** – 30 days leave per annum, plus public holidays
- **Pension** – 15% pension contribution by SHG into approved defined contribution pension scheme
- **Training and Development**
- **Paid sickness absence**

HOW TO APPLY

To access job profiles and application forms online, visit

www.sainthelena.gov.sh/government/vacancies Alternatively, these are available in paper format from Central Human Resources and Organisational Development at The Castle, Jamestown.

For further information, please contact the recruitment team on telephone number 22470 or via the email address below.

Applications should be submitted through the Director/Line Manager (where applicable) to the Human Resources Officer by email recruitment@sainthelena.gov.sh or paper copies delivered to the Human Resources Officer by the closing date.

To be considered for our vacancies, you must complete our application form. Please do not submit your CV.

Legislative Council Office Assistant (£11,604 per annum)

The Legislative Council Office is seeking to recruit a motivated individual with proven effective administrative skills to provide the Speaker, Deputy Speaker and Members of the Legislative Council with secretarial, research and administrative support. If you are interested in this opportunity, then we would be keen to hear from you.

Contact us for more information and a discussion

Enquiries: Anita Legg on Tel No. 22470 or Email: anita.legg@sainthelena.gov.sh
Closing date: 07 January 2026
Shortlisting date: 12 January 2026
Interview date: 19 January 2026

Police Constable (£13,569 per annum)

A unique and challenging opportunity has arisen for an enthusiastic and dynamic individual, to join the Royal St. Helena Police Service (RSHPS). The Royal St. Helena Police Service covers both Ascension Island and St. Helena and, at full strength, consists of 34 officers. We are seeking to recruit further Police Constables to support current Policing on both Saint Helena and Ascension.

In line with the requirements of the Police Service Ordinance 1985, the post holder must be under the age of 60 on the date of appointment.

Why join us?

Career Progression – Clear pathways for advancement within the Service, with opportunities to specialise and take on supervisory roles.

Training & Development – Access to professional training, accredited courses, and continuous development to help you grow in your policing career.

Salary Advancements – Competitive incremental pay structure as you gain experience and qualifications.

Contact us for more information and a discussion

Enquiries: Mark Coombe on Tel No. 22626 or Email: mark.coombe@sainthelena.gov.sh
Closing date: 07 January 2026
Shortlisting date: 12 January 2026
Interview date: 19 January 2026

The St Helena Public Service welcomes all applications from across our whole community, including our St Helenian diaspora wishing to return to St Helena. If you are a St Helenian currently living and working overseas, please contact us at recruitment@sainthelena.gov.sh to discuss how we can support you.

SHG positively accepts applications from all members of the community, regardless of age, gender, disability, age, sexual orientation, religion or belief and will consider all applications on the basis of merit assessed against the role profile and person specification. All appointments are subject to the successful candidate providing satisfactory clearances, which include a medical check, vetting / DBS clearance and references. SHG reserves the right to have information provided on or with the application independently verified. Benefits are subject to change and may vary according to role.



JOIN US! WE ARE RECRUITING...

BENEFITS

- **Leave** – 30 days leave per annum, plus public holidays
- **Pension** – 15% pension contribution by SHG into approved defined contribution pension scheme
- **Training and Development**
- **Paid sickness absence**

HOW TO APPLY

To access job profiles and application forms online, visit www.sainthelena.gov.sh/government/vacancies. Alternatively, these are available in paper format from Central Human Resources and Organisational Development at The Castle, Jamestown.

For further information, please contact the recruitment team on telephone number **22470** or via the email address below.

Applications should be submitted through the Director/Line Manager (where applicable) to the Human Resources Officer by email recruitment@sainthelena.gov.sh or paper copies delivered to the Human Resources Officer by the closing date.

To be considered for our vacancies, you must complete our application form. Please do not submit your CV.

Administration Team Leader (£13,569 per annum)

The Administration Team Leader will contribute to service delivery by coordinating the daily operations of the Senior Administration Assistants and Administration Assistants. You will ensure all administrative tasks are performed efficiently and effectively to enable the Portfolios to operate smoothly. Located in the Central Support Service but mobile across the Portfolios, this role promotes efficiencies and assists the Senior Administration Team Leader in creating an effective administration service that adapts to the evolving requirements of a contemporary Public Service.

Contact us for more information and a discussion

Enquiries: Carol Henry on Tel No. 22470 or Email: carol.henry@sainthelena.gov.sh
Closing date: 07 January 2026
Shortlisting date: 12 January 2026
Interview date: 19 January 2026

English/Humanities Teacher (£13,569 - £20,645 per annum depending on qualifications & experience)

Are you passionate about working with young people and helping shape their future? Join our team as an English/Humanities teacher at St. Helena Secondary School. In this role, you'll be responsible for planning, preparing, and delivering engaging lessons that cater to students of all abilities. We're looking for someone with the necessary qualifications, a commitment to safeguarding the well-being of young people, and excellent communication skills. You'll work closely with students, parents, and colleagues to create a supportive and effective learning environment. For more details and to discuss this exciting opportunity, get in touch with us!

Education Skills and Employment is committed to safeguarding and promoting the welfare of children and young people. We expect all staff and volunteers to share this commitment. The successful candidate will be required to provide proof of identity and qualifications, and will be subject to reference checks, an enhanced police background check, and any other safeguarding checks relevant to the role. We promote equality of opportunity and welcome applications from all sections of the community

Enquiries: Phil Toal on Tel No. 24290 or Email: phil.toal@sainthelena.gov.sh
Closing date: 02 January 2026
Shortlisting date: 07 January 2026
Interview date: 16 January 2026

The St Helena Public Service welcomes all applications from across our whole community, including our St Helenian diaspora wishing to return to St Helena. If you are a St Helenian currently living and working overseas, please contact us at recruitment@sainthelena.gov.sh to discuss how we can support you.

SHG positively accepts applications from all members of the community, regardless of age, gender, disability, age, sexual orientation, religion or belief and will consider all applications on the basis of merit assessed against the role profile and person specification. All appointments are subject to the successful candidate providing satisfactory clearances, which include a medical check, vetting / DBS clearance and references. SHG reserves the right to have information provided on or with the application independently verified. Benefits are subject to change and may vary according to role.



JOIN US! WE ARE RECRUITING...

BENEFITS

- **Leave** – 30 days leave per annum, plus public holidays
- **Pension** – 15% pension contribution by SHG into approved defined contribution pension scheme
- **Training and Development**
- **Paid sickness absence**

HOW TO APPLY

To access job profiles and application forms online, visit www.sainthelena.gov.sh/government/vacancies. Alternatively, these are available in paper format from Central Human Resources and Organisational Development at The Castle, Jamestown.

For further information, please contact the recruitment team on telephone number **22470** or via the email address below.

Applications should be submitted through the Director/Line Manager (where applicable) to the Human Resources Officer by email recruitment@sainthelena.gov.sh or paper copies delivered to the Human Resources Officer by the closing date.

To be considered for our vacancies, you must complete our application form. Please do not submit your CV.

Community Staff Nurse (£13,569 per annum)

The Community Staff Nurse will work within the community either at the District Clinics or in the patient's home. Deliver Nursing Care as part of a team. Supporting the Community Nursing Sister in the delivery of an efficient/effective nursing service and has responsibility for assessment, planning, delivery and evaluation of care. Management of a caseload of patients under the direction of the Nursing Sister.

Contact us for more information and a discussion

Enquiries: Jacqueline Henry on Tel No. 22500 or Email: Jackie.henry@sainthelena.gov.sh
Closing date: 07 January 2026
Shortlisting date: 12 January 2026
Interview date: 19 January 2026

Security, Health & Safety Officer (£13,569 per annum)

The Security, Health & Safety Officer will enhance the well-being of everyone in our community and support the prosperity of the island, collaborating with Emergency Planning, while implementing and ensuring adherence to SHG security, health, and safety (OHS) regulations. The main responsibility will involve providing guidance on strategies to reduce security violations, mitigate hazards, and uphold a safe and secure working environment throughout SHG, in compliance with legal safety requirements and fostering a culture that prioritizes security and safety.

Contact us for more information and a discussion

Enquiries: Anel O'Bey on Tel No. 25052 or Email: anel.obey@helanta.co.sh
Closing date: 09 January 2026
Shortlisting date: 14 January 2026
Interview date: 22 January 2026

The St Helena Public Service welcomes all applications from across our whole community, including our St Helenian diaspora wishing to return to St Helena. If you are a St Helenian currently living and working overseas, please contact us at recruitment@sainthelena.gov.sh to discuss how we can support you.

SHG positively accepts applications from all members of the community, regardless of age, gender, disability, age, sexual orientation, religion or belief and will consider all applications on the basis of merit assessed against the role profile and person specification. All appointments are subject to the successful candidate providing satisfactory clearances, which include a medical check, vetting / DBS clearance and references. SHG reserves the right to have information provided on or with the application independently verified. Benefits are subject to change and may vary according to role.



JOIN US! WE ARE RECRUITING...

BENEFITS

- **Leave** – 30 days leave per annum, plus public holidays
- **Pension** – 15% pension contribution by SHG into approved defined contribution pension scheme
- **Training and Development**
- **Paid sickness absence**

HOW TO APPLY

To access job profiles and application forms online, visit www.sainthelena.gov.sh/government/vacancies. Alternatively, these are available in paper format from Central Human Resources and Organisational Development at The Castle, Jamestown.

For further information, please contact the recruitment team on telephone number **22470** or via the email address below.

Applications should be submitted through the Director/Line Manager (where applicable) to the Human Resources Officer by email recruitment@sainthelena.gov.sh or paper copies delivered to the Human Resources Officer by the closing date.

To be considered for our vacancies, you must complete our application form. Please do not submit your CV.

Administration Assistant (£10,088 per annum)

Are you interested in becoming a member of the Central Support team? If so, we are looking to recruit an Administration Assistant. The Administration Assistant is responsible for completing straightforward administrative processes that support the smooth running of Portfolios and delivering a high quality, customer focused service. We are seeking a highly motivated individual who works methodically and has a keen eye for detail that can provide administrative support across the Portfolios.

Contact us for more information and a discussion

Enquiries: Sara-Kay Yon on Tel No. 22470 or Email: sara.kay.yon@sainthelena.gov.sh
Closing date: 07 January 2026
Shortlisting date: 12 January 2026
Interview date: 19 January 2026

Teacher - Science (SHSS) (£13,569 – £20,645 per annum)

Do you have a passion for education and a love of science? We are seeking a dedicated and enthusiastic Teacher of Science to join our team and inspire the next generation of learners. In this role, you will deliver engaging and high-quality teaching across Key Stages 3, 4, and 5, helping students develop both academically and personally. You will plan, prepare, and teach well-structured, differentiated lessons that spark curiosity and foster scientific thinking. You will also set meaningful home learning tasks that consolidate learning and support steady progress. We're looking for a teacher who can bring science to life, encouraging students to question, explore, and understand the world around them. If you are passionate about creating positive learning experiences and committed to helping every student achieve their potential, we would love to hear from you.

Education Skills and Employment is committed to safeguarding and promoting the welfare of children and young people. We expect all staff and volunteers to share this commitment. The successful candidate will be required to provide proof of identity and qualifications, and will be subject to reference checks, an enhanced police background check, and any other safeguarding checks relevant to the role. We promote equality of opportunity and welcome applications from all sections of the community

Enquiries: Phil Toal on Tel No. 24290 or Email: phil.toal@sainthelena.gov.sh
Closing date: 09 January 2026
Shortlisting date: 14 January 2026
Interview date: 22 January 2026

The St Helena Public Service welcomes all applications from across our whole community, including our St Helenian diaspora wishing to return to St Helena. If you are a St Helenian currently living and working overseas, please contact us at recruitment@sainthelena.gov.sh to discuss how we can support you. SHG positively accepts applications from all members of the community, regardless of age, gender, disability, age, sexual orientation, religion or belief and will consider all applications on the basis of merit assessed against the role profile and person specification. All appointments are subject to the successful candidate providing satisfactory clearances, which include a medical check, vetting / DBS clearance and references. SHG reserves the right to have information provided on or with the application independently verified. Benefits are subject to change and may vary according to role.

FROM THE COUCH

Contributed by Leigh & Louis

Match of the week, chosen and reported on by 10 year old Football Enthusiast Louis this week was the game where the draw between Manchester United and Bournemouth..

Manchester United and AFC Bournemouth delivered an early Christmas cracker as eight different players scored in a sensational 4-4 draw at Old Trafford.

United set the tone 13 minutes in. Diogo Dalot crossed from the left, and though Cunha failed to connect with a header, Djordje Petrovic was forced to parry, and Amad gratefully nodded home.

Bournemouth drew level in the 40th minute, with Semenyo finishing neatly following Luke Shaw's giveaway, though United restored their lead as Casemiro's downward header squirmed past Petrovic in the fourth minute of first-half stoppage time.

However, Bournemouth stunned their hosts with a quickfire double at the start of the second half, with Evanilson tucking home 38 seconds after the interval before Tavernier whipped a free-kick beyond Senne Lammens' grasp in the 52nd minute.

But after a wild miss from Bryan Mbeumo, Fernandes curled his own fine dead-ball effort into the top-right corner with 13 minutes of normal time remaining.

Cunha then latched on to a deflected centre from Benjamin Sesko to make it 4-3.

Yet Bournemouth did not give in, and five minutes later they were level again as Kroupi finished smartly after a powerful run from Alex Jimenez and the Cherries might have won it had Lammens not twice denied Brooks in the closing moments.

While the point lifts United to sixth in the Premier League, Bournemouth climb to 13th, despite their winless run stretching to seven games.



	Premier
	League
	Results

Saturday 13th	Chelsea	2	0	Everton
Saturday 13th	Liverpool	2	0	Brighton
Saturday 13th	Burnley	2	3	Fulham
Saturday 13th	Arsenal	2	1	Wolves
Sunday 14th	Crystal Palace	0	3	Man City
Sunday 14th	Nott'm Forest	3	0	Tottenham
Sunday 14th	Sunderland	1	0	Newcastle
Sunday 14th	West Ham	2	3	Aston Villa
Sunday 14th	Brentford	1	1	Leeds
Monday 14th	Man United	4	4	Bournemouth

	Premier
	League
	Fixtures

Saturday 20th	12:30	Newcastle	vs	Chelsea
Saturday 20th	15:00	Bournemouth	vs	Burnley
Saturday 20th	15:00	Brighton	vs	Sunderland
Saturday 20th	15:00	Man City	vs	West Ham
Saturday 20th	15:00	Wolves	vs	Brentford
Saturday 20th	17:30	Tottenham	vs	Liverpool
Saturday 20th	20:00	Everton	vs	Arsenal
Saturday 20th	20:00	Leeds	vs	Crystal Palace
Sunday 21st	16:30	Aston Villa	vs	Man United
Monday 22nd	20:00	Fulham	vs	Nott'm Forest

We will be back next week with all the latest from the Premier League

END TO SHFA SEASON 2025



BELLBOYS
2025 League Champions
2025 Knockout Runners Up



ROVERS
2025 League Runners Up
2025 Knockout Champions



ST PAULS
2025 District Runners Up



HALF TREE HOLLOW
2025 District Champions



RICO BENJAMIN
Man of the Match
Knockout final



KEITH YON
Goalkeeper of the season
2025 League
2025 District



RYAN STEVENS
Kenon Bargo Youth Trophy



TYLER ANTHONY
2025 Young Player of the Season



JOEY THOMAS
2025 League Top Goalscorer
2025 District Top Goalscorer
2025 Player of the Season

LUKE BOWERS
2025 MOST IMPROVED PLAYER

REFEREES OF THE DAY
DEON
MARTIN BUCKLEY
ALONZO HENRY

ALISTAIR BUCKLEY
2025 Veteran of the season



Dear Readers,

We regret that this edition does not include coverage of the Women's Sports Association Presentation, as the required photos and text was not received in time.

Regards,
St Helena Independent



Home For Sale

**OFFERS INVITED IN THE
REGION OF £97,500**

For Sale by Owner

A lovely, almost complete home set in peaceful, green surroundings. This property offers a solid foundation and modern layout.

Visualised impressions below show the home's full potential as a bright, welcoming residence blending comfort with natural beauty.

For inquiries, contact: shpropertysales@gmail.com

YouTube Channel (Video, Slideshow, Virtual Viewing): <http://shorturl.at/itKuc>

Online Viewing

360° Self-Directed Walkaround: <http://shorturl.at/YtMh8>



Property Highlights

- Freehold Title, Fast Closing
- A Quality Investment
- Quiet, Private Location
- Near Bus Stop In Alarm Forest Area
- Fiber Internet Available on Island
- Close to the Capital Jamestown
- Potential for Open-Plan Living/Dining Area & Two Spacious Bedrooms (Including Ensuite Master) & a 3rd Bedroom / Office
- Large Windows and Sliding Doors
- Outdoor Space & Garden
- Sunset Views of Castle



Impressions of How the
Finished Property Could Look ;



<https://www.propertyfinder.sh/properties/hunts-bank-property-for-sale/>



shpropertysales@gmail.com

Home & Land For Sale

For Sale by Owner as a whole or in 2 lots

Upper lot

A large partly finished detached bungalow on freehold land with amazing views of both ocean & mountain

Lower lot

A plot of freehold land suitable for building or investment with own access via lane at the bottom of the plot

Visualised impression below show the home's full potential as a bright, welcoming residence blending comfort with natural beauty.

For inquiries, contact: shpropertysales@gmail.com

**OFFERS INVITED IN THE REGION OF £85,000 FOR THE WHOLE OR
MAY SELL SEPARATELY @ £67,500 UPPER & £17,500 LOWER**

Highlights

- Freehold Title, Fast Closing
- Excellent Investment
- Fiber Internet Available On Island
- Quiet, Private Location
- Located in DeadWood Near LongWood Shops, Bus etc
- Not Far to the Capital Jamestown
- Outdoor Space & Garden
- Almost All Round Views of Mountains & Ocean

Viewing

YouTube Channel (Video, Slideshow, Virtual Viewing):

<http://shorturl.at/itKuc>

360° Self-Directed Walkaround:

<http://shorturl.at/YtMh8>



[propertyfinder.sh/properties/deadwood-property-sale/](https://www.propertyfinder.sh/properties/deadwood-property-sale/)



shpropertysales@gmail.com

Merry Christmas
AND A
HAPPY NEW
YEAR

From all the staff at the St Helena Independent
Poppy, Stella and Preston (Mic-kail's Cat)

*MADE IN ADOBE PHOTOSHOP



MACS SHIPPING SCHEDULE UPDATE



	BRIGHT SKY 251223	BLUE MASTER II 261202	LILAC ROLLER 261204
Immingham	08-Nov	20-Dec	17-Jan
Walvis Bay	03-Dec		
	KAROLINE 251712	KAROLINE 261701	KAROLINE 261702
Cape Town	06-Dec	30-Jan	25-Feb
Walvis Bay	10-Dec		
Rupert's Bay	16-Dec	07-Feb	05-Mar
Ascension Island			10-Mar
	KAROLINE 251812	KAROLINE 261801	KAROLINE 261802
Cape Town	27-Dec	20-Feb	26-Mar

*schedule may change without prior notice. For the latest updates, please visit our website.



Moving your cargo globally with flexibility and care.

Get in touch with us macship.com
CPT +27 21 405 3400 | sthelena.cpt@macship.com



WHATEVER
YOU NEED
TO SHIP

